

UNITED STATES
DEPARTMENT OF THE INTERIOR
GEOLOGICAL SURVEY

30-039-21123

APPLICATION FOR PERMIT TO DRILL, DEEPEN, OR PLUG BACK

1a. TYPE OF WORK

DRILL ☒DEEPEN ☐PLUG BACK ☐

b. TYPE OF WELL

OIL
WELL ☐GAS
WELL ☒

OTHER

SINGLE
ZONE ☒MULTIPLE
ZONE ☐

2. NAME OF OPERATOR

Northwest Pipeline Corporation

3. ADDRESS OF OPERATOR

P. O. Box 90 Farmington, New Mexico

4. LOCATION OF WELL (Report location clearly and in accordance with any State requirements.)*

At surface

1590' FWL & 1460' FNL

At proposed prod. zone

As above

14. DISTANCE IN MILES AND DIRECTION FROM NEAREST TOWN OR POST OFFICE*

15. DISTANCE FROM PROPOSED*

LOCATION TO NEAREST

PROPERTY OR LEASE LINE, FT.

(Also to nearest drlg. unit line, if any)

18. DISTANCE FROM PROPOSED LOCATION*

TO NEAREST WELL, DRILLING, COMPLETED,
OR APPLIED FOR, ON THIS LEASE, FT.

16. NO. OF ACRES IN LEASE

17. NO. OF ACRES ASSIGNED

TO THIS WELL

19. PROPOSED DEPTH

6005

20. ROTARY OR CABLE TOOLS

Rotary

21. ELEVATIONS (Show whether DF, RT, GR, etc.)

6633' GR

23.

PROPOSED CASING AND CEMENTING PROGRAM

SIZE OF HOLE	SIZE OF CASING	WEIGHT PER FOOT	SETTING DEPTH	QUANTITY OF CEMENT
13-3/4	9-5/8	36	200	180 sx
8-3/4	7	20	3875	165 sx
6-1/4	4-1/2 liner	10.5	6005	215 sx

Selectively perforate and stimulate the Mesa Verde formation.

A BOP will be installed after the 9-5/8" surface casing has been run and cemented.
All subsequent work will be conducted through the BOP.

The west half of Section 1 is dedicated to this well.

IN ABOVE SPACE DESCRIBE PROPOSED PROGRAM: If proposal is to deepen or plug back, give data on present productive zone and proposed new productive zone. If proposal is to drill or deepen directionally, give pertinent data on subsurface locations and measured and true vertical depths. Give blowout preventer program, if any.

24.

SIGNED

(This space for Federal or State office use)

TITLE Sr. Prod. & Drlg. Engr.

DATE July 25, 1975

PERMIT NO.

APPROVAL DATE

APPROVED BY

TITLE

DATE

CONDITIONS OF APPROVAL, IF ANY:

**NEW MEXICO OIL CONSERVATION COMMISSION
WELL LOCATION AND ACREAGE DEDICATION PLAT**

Form C-102
Supersedes C-128
Effective 1-1-65

All distances must be from the outer boundaries of the Section.

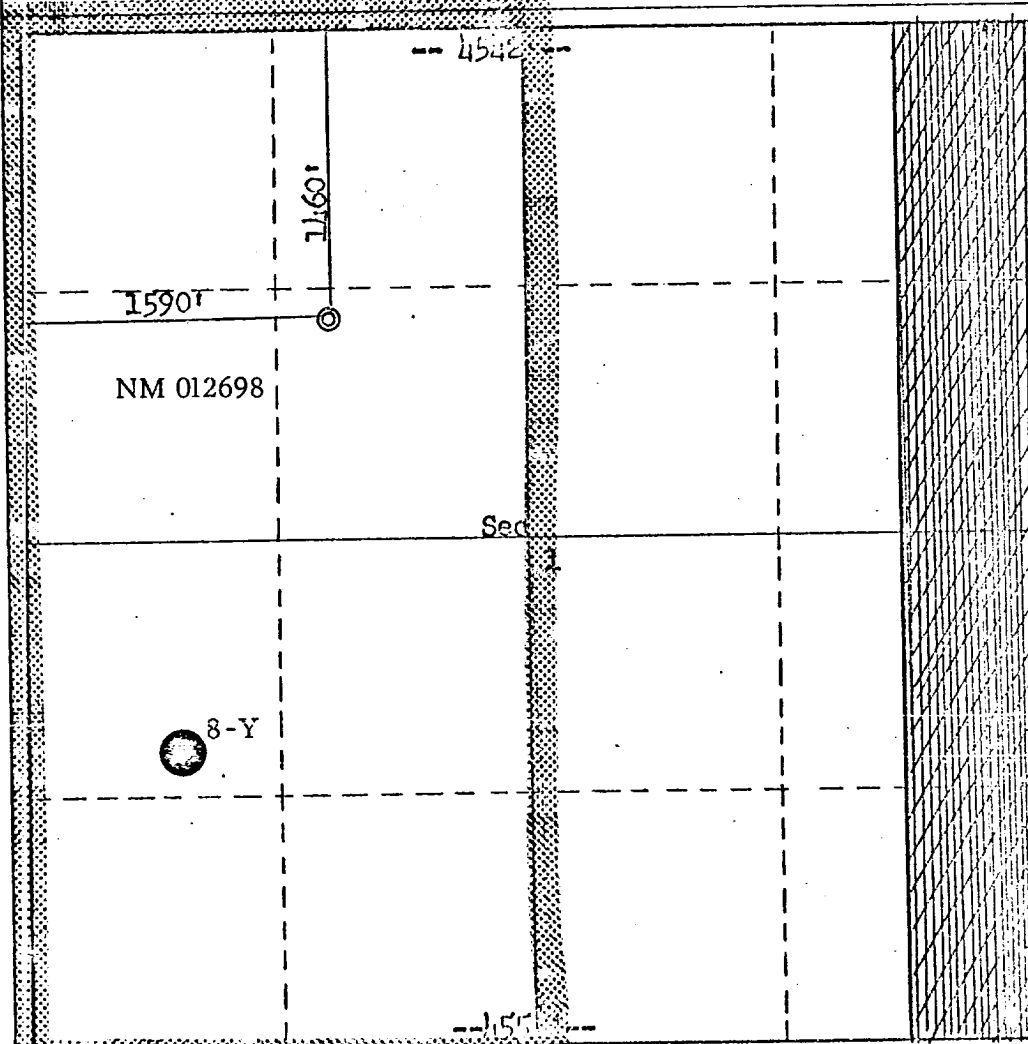
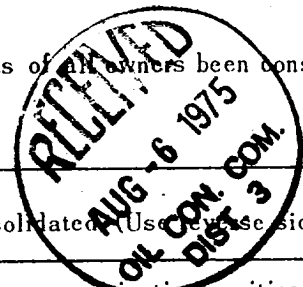
Operator Northwest Pipeline Corporation			Lease San Juan 29-6 Unit		Well No. 8A
Unit Letter F	Section 1	Township 29N	Range 6W	County Rio Arriba	
Actual Footage Location of Well: 1160 feet from the North line and 1590 feet from the West line					
Ground Level Elev. 6633	Producing Formation Mesa Verde		Pool Blanco Mesa Verde	Dedicated Acreage: 319.54 Acres	

1. Outline the acreage dedicated to the subject well by colored pencil or hachure marks on the plat below.
2. If more than one lease is dedicated to the well, outline each and identify the ownership thereof (both as to working interest and royalty).
3. If more than one lease of different ownership is dedicated to the well, have the interests of all owners been consolidated by communitization, unitization, force-pooling, etc?

☐ Yes ☒ No If answer is "yes," type of consolidation _____

If answer is "no," list the owners and tract descriptions which have actually been consolidated (Use reverse side of this form if necessary.) SE/4 NW/4 Sec. 1, T29N, R6W

No allowable will be assigned to the well until all interests have been consolidated (by communitization, unitization, forced-pooling, or otherwise) or until a non-standard unit, eliminating such interests, has been approved by the Commission.



CERTIFICATION

I hereby certify that the information contained herein is true and complete to the best of my knowledge and belief.

O. B. Whitenburg
O. B. Whitenburg

Name
Sr. Prod. & Drlg. Engr.

Position
Northwest Pipeline Corp.

Company
July 25, 1975

Date

I hereby certify that the well location shown on this plat was plotted from field notes of actual surveys made by me or under my supervision, and that the same is true and correct to the best of my knowledge and belief.

Date Surveyed
April 20, 1975

Registered Professional Engineer
and/or Land Surveyor

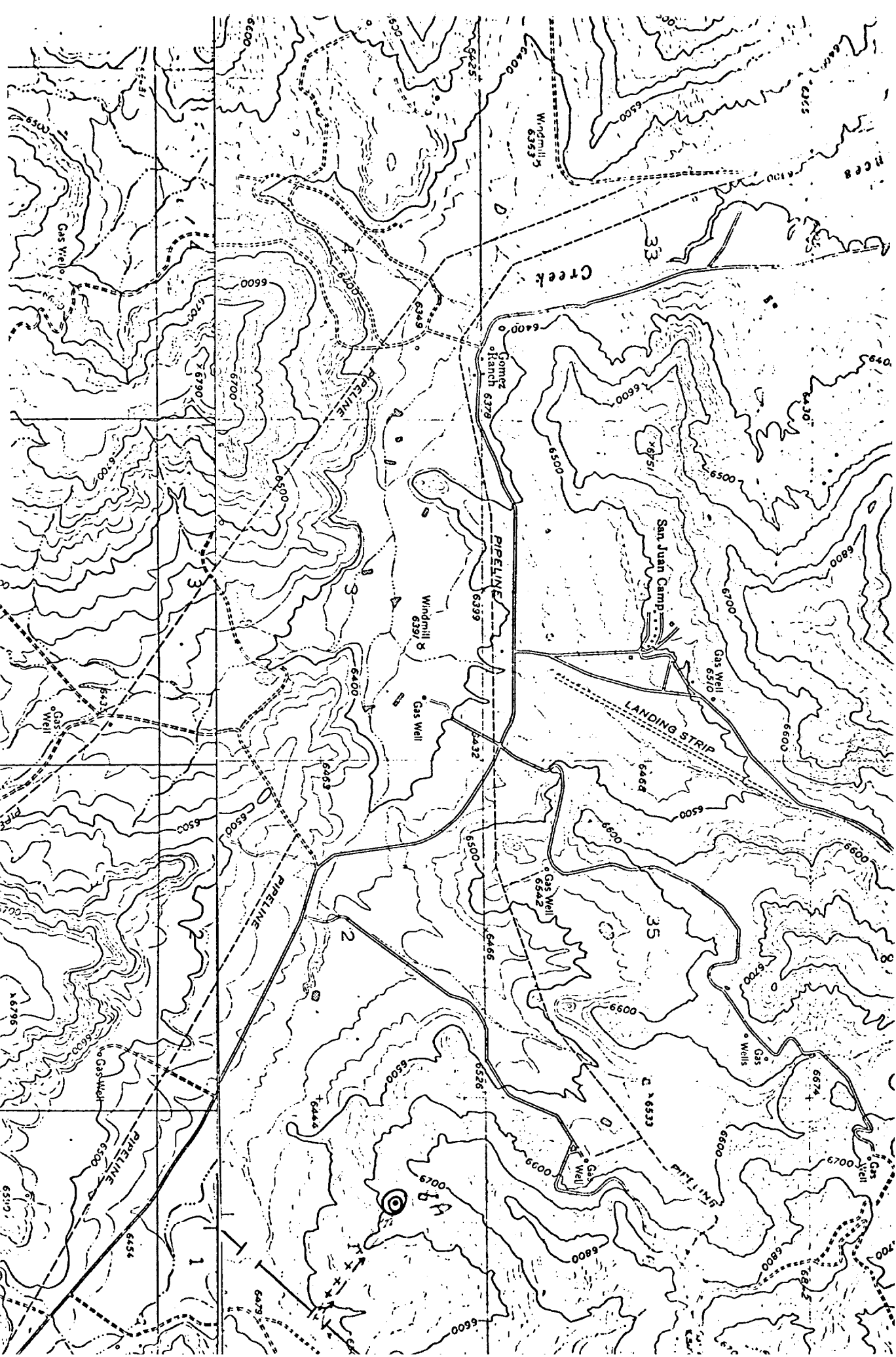
Fred B. Kerr Jr.
Fred B. Kerr Jr.

+++++

1
2
3
4
5
6

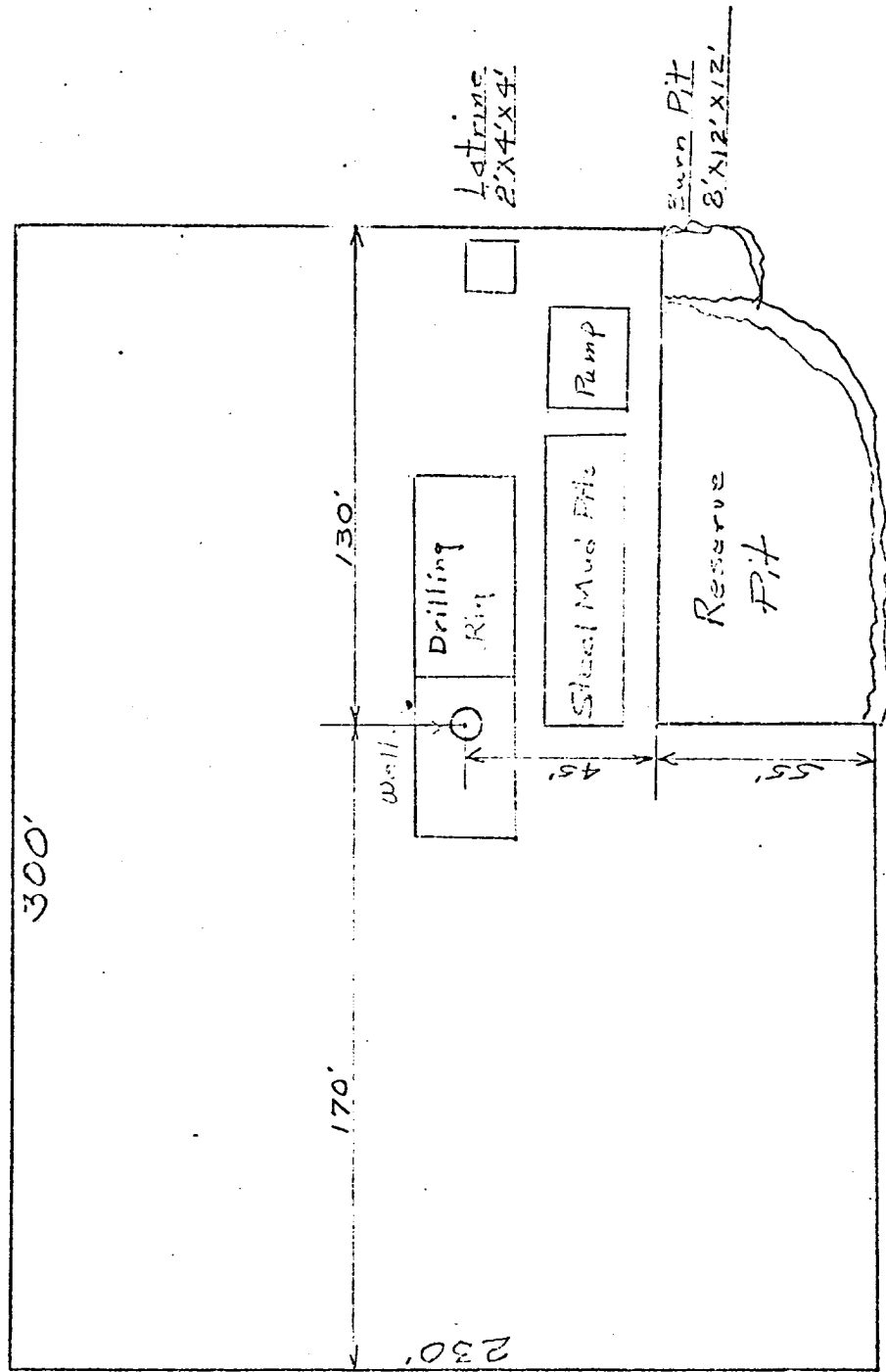
↑
↑
↑
↑
↑

11
11
11
11
11
11
11
11
11
11



LOCATION AND EQUIPMENT LAYOUT

SAN JUAN 29-6 #8A



Northwest Pipeline Corporation



PRODUCTION & DRILLING
P. O. BOX 90
FARMINGTON, NEW MEXICO 87401

August 4, 1975

United States Geological Survey
P. O. Box 1809
Durango, Colorado 81301

Re: Application for "Permit to Drill"
San Juan 29-6 Unit #8A
Sec. 1, T29N, R6W
Rio Arriba County, New Mexico

Gentlemen:

Information regarding existing roads, pipelines, flowlines, etc., relative to the above well location is included on the enclosed attachments.

Water for drilling and completion operations will be obtained from the San Juan 29-6 water well #1 located in the NW/4 SW/4 Sec. 28, T29N, R6W.

Waste disposal will be in the burn pit, latrine or reserve pit.

There will be no camp or airstrip associated with drilling this well.

Upon completion or abandonment of this well, the location will be cleaned, leveled, and a dry hole marker placed, if applicable.

Northwest Pipeline Corporation

D. H. Maroncelli

D. H. Maroncelli
Drilling Engineer

DHM/mag

xc: file



14