

NO. OF COPIES RECEIVED	6
DISTRIBUTION	
SANTA FE	1
FILE	1
U.S.G.S.	2
LAND OFFICE	1
OPERATOR	1

NEW MEXICO OIL CONSERVATION COMMISSION

30-039-21312
Form C-101
Revised 1-1-65

5A. Indicate Type of Lease	
STATE <input checked="" type="checkbox"/>	FEE <input type="checkbox"/>
5. State Oil & Gas Lease No.	
E 289-31	

APPLICATION FOR PERMIT TO DRILL, DEEPEN, OR PLUG BACK			
1a. Type of Work		7. Unit Agreement Name	
DRILL <input checked="" type="checkbox"/> DEEPEN <input type="checkbox"/> PLUG BACK <input type="checkbox"/>		San Juan 29-6 Unit	
b. Type of Well		8. Farm or Lease Name	
OIL WELL <input type="checkbox"/> GAS WELL <input checked="" type="checkbox"/> OTHER <input type="checkbox"/>		San Juan 29-6 Unit	
2. Name of Operator		9. Well No.	
Northwest Pipeline Corporation		50A	
3. Address of Operator		10. Field and Pool, or Wildcat	
P.O. Box 90 Farmington, New Mexico 87401		Blanco Mesa Verde	
4. Location of Well		12. County	
UNIT LETTER J LOCATED 1830 FEET FROM THE South LINE		Rio Arriba	
AND 1100 FEET FROM THE East LINE OF SEC. 36 TWP. 29N RGE. 6W NMPM			
19. Proposed Depth		19A. Formation	
5718'		Mesa Verde	
20. Rotary or C.T.		Rotary	
21. Elevations (Show whether DF, RT, etc.)		22. Approx. Date Work will start	
6416' GR		February 15, 1977	

23. PROPOSED CASING AND CEMENT PROGRAM					
SIZE OF HOLE	SIZE OF CASING	WEIGHT PER FOOT	SETTING DEPTH	SACKS OF CEMENT	EST. TOP
13 3/4"	9 5/8"	36	200'	180	Circ.
8 3/4"	7"	20	3702'	160	--
6 1/4"	liner 4 1/2"	10.5	3552' to 5718'	215	--

Selectively perforate and stimulate the Mesa Verde formation.

A BOP will be installed after the surface casing has been run and cemented. All subsequent work will be conducted through the BOP.

The E/2 of section 36 is dedicated to this well

Gas is dedicated.

APPROVAL VALID
FOR 90 DAYS UNLESS
REPELLED BY MINUTE NO.

3-29-77



IN ABOVE SPACE DESCRIBE PROPOSED PROGRAM: IF PROPOSAL IS TO DEEPEN OR PLUG BACK, GIVE DATA ON PRESENT PRODUCTIVE ZONE AND PROPOSED NEW PRODUCTIVE ZONE. GIVE BLOWOUT PREVENTER PROGRAM, IF ANY.

I hereby certify that the information above is true and complete to the best of my knowledge and belief.

Signed D. H. Maroncelli Title Production Engineer Date December 22, 1976

(This space for State Use)

APPROVED BY AK Kendrick TITLE SUPERVISOR DIST. #3 DATE DEC 28 1976

CONDITIONS OF APPROVAL, IF ANY:

NW 1/4-27-2

ch

**NEW MEXICO OIL CONSERVATION COMMISSION
WELL LOCATION AND ACREAGE DEDICATION PLAT**

Form C-102
Supersedes C-128
Effective 1-1-65

All distances must be from the outer boundaries of the Section.

Operator Northwest Pipeline Corporation			Lease San Juan 29-6 Unit		Well No. 50A
Unit Letter J	Section 36	Township 29N	Range 6W	County Rio Arriba	
Actual Footage Location of Well:					
1830 feet from the South line and 1100 feet from the East line					
Ground Level Elev: 6416	Producing Formation Mesa Verde	Pool BLANCO		Dedicated Acreage: <input checked="" type="checkbox"/> 234.16 Acres	

1. Outline the acreage dedicated to the subject well by colored pencil or hachure marks on the plat below.

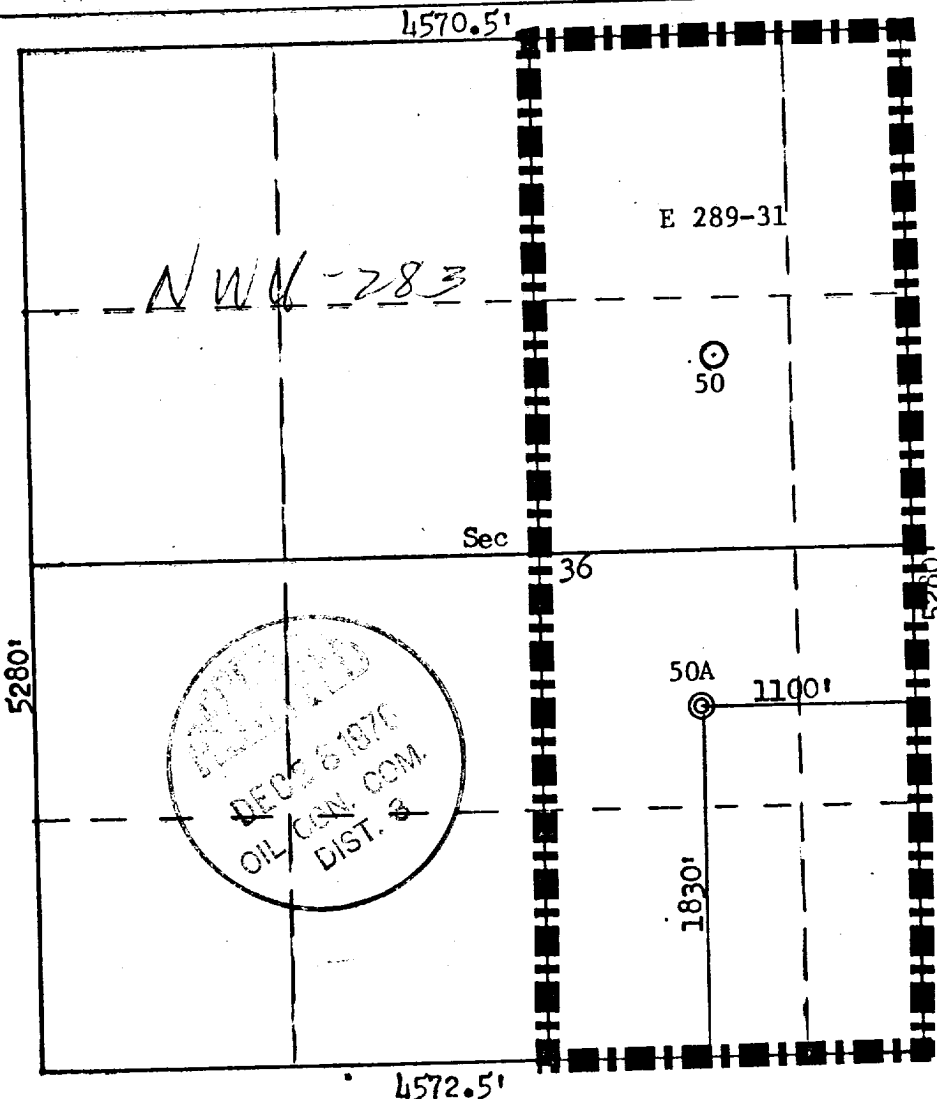
2. If more than one lease is dedicated to the well, outline each and identify the ownership thereof (both as to working interest and royalty).

3. If more than one lease of different ownership is dedicated to the well, have the interests of all owners been consolidated by communitization, unitization, force-pooling, etc?

☐ Yes ☐ No If answer is "yes," type of consolidation _____

If answer is "no," list the owners and tract descriptions which have actually been consolidated. (Use reverse side of this form if necessary.) _____

No allowable will be assigned to the well until all interests have been consolidated (by communitization, unitization, forced-pooling, or otherwise) or until a non-standard unit, eliminating such interests, has been approved by the Commission.



CERTIFICATION

I hereby certify that the information contained herein is true and complete to the best of my knowledge and belief.

D. H. Maroncelli

Name D. H. MARONCELLI
Position PRODUCTION ENGINEER
Company NORTHWEST PIPELINE CORP.
Date DECEMBER 22, 1976

I hereby certify that the well location shown on this plat was plotted from field notes of actual surveys made by me or under my supervision, and that the same is true and correct to the best of my knowledge and belief.

Date Surveyed December 15, 1976
Registered Professional Engineer and Land Surveyor <i>Fred B. Kern</i> Fred B. Kern
Certificate No. 3950