

UNITED STATES
DEPARTMENT OF THE INTERIOR
GEOLOGICAL SURVEY

30-039-21569
5. LEASE NUMBER, SURFACE AND SERIAL NO.

SF 078278

6. IF INDIAN, AGENCY AND RESERVE NAME

7. UNIT AGREED TO BY

San Juan 29-6 Unit

8. FARM OR LAND NAME

San Juan 29-6 Unit

9. WELL NO.

33A

10. FIELD AND SURFACE OR BLOCK

Blanco Mesa Verde

11. SEC., T., R., S., AND SURVEY

SEC 13 T29N R0W

12. COUNTY OR TERRITORY AND STATE

Rio Arriba NM

APPLICATION FOR PERMIT TO DRILL, DEEPEN, OR PLUG BACK

1a. TYPE OF WORK

DRILL ☒

DEEPEN ☐

PLUG BACK ☐

b. TYPE OF WELL

OF WELL ☐

GAS WELL ☒

OTHER

SINGLE ZONE ☐

MULTIPLE ZONE ☐

2. NAME OF OPERATOR

Northwest Pipeline Corporation

3. ADDRESS OF OPERATOR

P.O. Box 90 Farmington, New Mexico 87401

4. LOCATION OF WELL (Report location clearly and in accordance with any State requirements.)*

At surface

1850' TSL & 900' FEL

At proposed prod. zone

As Above

14. DISTANCE IN MILES AND DIRECTION FROM NEAREST TOWN OR POST OFFICE*

N/A

15. DISTANCE FROM PROPOSED*

LOCATION TO NEAREST

PROPERTY OR LINE, FT.

(Also to nearest well, unit line, if any)

900'

18. DISTANCE FROM PROPOSED LOCATION*

TO NEAREST WELL, PRODUCTION COMPLETED,
OR OTHER USE, ON THIS LEASE, FT.

N/A

16. NO. OF ACRES IN LEASE

N/A

17. NO. OF ACRES ADJACENT

TO THIS WELL
E/ 232.16

19. PROPOSED DEPTH

6007

20. ROTARY OR CABLE TOOL

Rotary

21. CONDITIONS (Show whether DE, FE, CE, etc.)

22. APPROX. DATE WORK WILL START*

1/1/78

23.

PROPOSED CASING AND CEMENTING PROGRAM

SIZE OF HOLES	SIZE OF CASING	WEIGHT PER FOOT	SETTING DEPTH	QUANTITY OF CEMENT
12 1/4	5/8	32.3#	200'	125 sks
8 3/4		20.5#	3933	150 sks
6 1/4	4 1/2	10.5#	3783-6007	210 sks

Selectively perforate and stimulate the Mesa Verde formation.

A BOP will be installed after the surface casing has been run and cemented.

All subsequent operations will be conducted through the BOP.

The E/2 of section 13 is dedicated to this well gas is dedicated.



IN ABOVE SPACE DESCRIBE PROPOSED PROGRAM: If proposal is to deepen or plug back, give data on present productive zone and proposed new productive zone. If proposal is to drill or deepen occasionally, give pertinent data on subsurface conditions and measured and true vertical depths. Give blowout preventer program, if any.

24.

SIGNED

D. E. Richardson

TITLE

Drilling Engineer

DATE

11-1-77

(Leave space for Federal or State office use)

PERMIT NO.

APPROVAL DATE

APPROVED BY

TITLE

DATE

CONDITIONS OF APPROVAL, IF ANY

OK
Unit letter OK
NW 4-551

*See Instructions On Reverse Side

NEW MEXICO OIL CONSERVATION COMMISSION
WELL LOCATION AND ACREAGE DEDICATION PLAT

Form C-102
Revised C-128
Effective 1-1-65

All distances must be from the outer boundary of the Section.

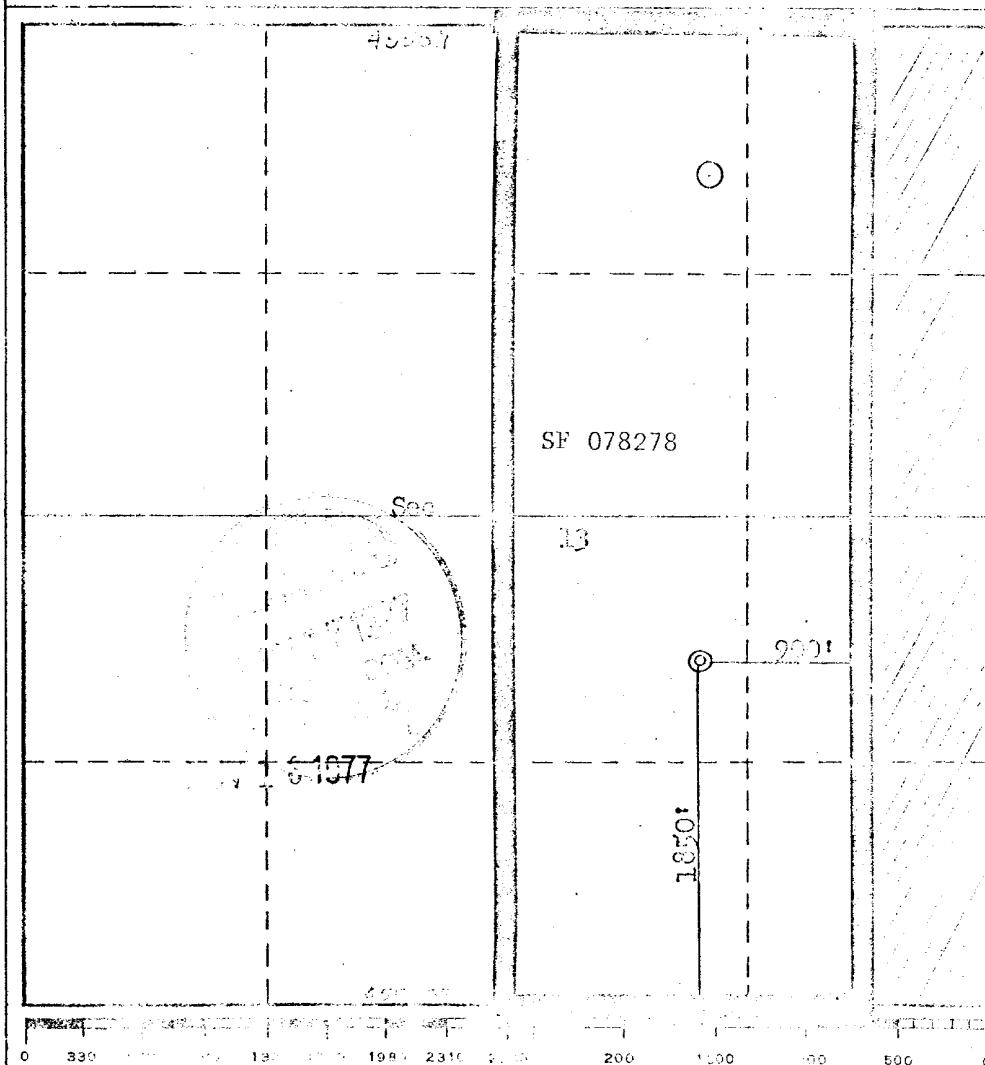
Operator Northwest Pipeline Corporation		Lease Section 29-6 Unit		
Unit Letter J	Section 13	Township 29N	Range 6E	County Rio Arriba
Actual footage 1/4 Sec. 13 1850				
Direction South		Line and 900	Foot from the East	
Ground Level Elev. 6787	Producing Formation Mesa Verde	Color Blanco	Section 232.16	Area

1. Outline the acreage dedicated to the subject well by colored pencil or hatchure marks on the plat below.
2. If more than one lease is dedicated to the well, outline each and identify the ownership thereof (both as to working interest and royalty).
3. If more than one lease of different ownership is dedicated to the well, have the interests of all owners been consolidated by communization, unitization, force-pooling, etc?

☐ Yes ☐ No If answer is "yes," type of consolidation _____

If answer is "no," list the owners and tract descriptions which have actually been consolidated. (Use reverse side of this form if necessary.) _____

No allowable well be assigned to the well until all interests have been consolidated (by communization, unitization, forced-pooling, or otherwise) or until a non-standard unit, eliminating such interests, has been approved by the Commission.



CERTIFICATION

I hereby certify that the information contained herein is true and correct to the best of my knowledge and belief.

D.E. Richardson
Name

D.E. Richardson
Position

Drilling Engineer
Company

Northwest Pipeline Corp.
Date

November 8, 1965

I hereby certify that the well location shown on this plat was plotted from field notes of actual surveys made by me or under my supervision, and that the same is true and correct to the best of my knowledge and belief.

Date Surveyed
October 14, 1965

Registered Professional Engineer and/or Land Surveyor

Frederick B. ...
Certificate No.

3950

OPERATIONS PLAN

San Juan 29-6 Unit #33A

I. LOCATION: NW/4 SW/4 Sec. 13, T29N, R6W
Rio Arriba County, N.M.

LEASE NUMBER: SF 078278

FIELD: Blanco Mesa Verde

ELEVATION: 6727' GR

II. GEOLOGY:

A. Formation Tops:

Ojo Alamo:	2739'	Cliff House:	5409'
Kirtland:	2902'	Menefee:	5513'
Fruitland:	3342'	Point Lookout:	5807'
Pictured Cliffs:	3629'	Total Depth:	6007'
Lewis:	3733'		

B. Logging Program: Gamma Ray-Neutron at T.D.

C. Coring Program: None

D. Natural Gauges: Gauge at last connection above 5513', 5807' and at total depth. Gauge any noticeable increases in gas flow at depth other than those noted above.

III. DRILLING:

A. Anticipated starting date and duration of activities: Jan. 1, 1978, 2 weeks.

B. BOP: Blind rams and pipe rams, 10', 900 series, double gate, rated at 3000 PSI.

C. Mud Program:

a) Spud Mud: Water, lime and gel.

b) Surface to 3733'

Viscosity: 32-38 sec/qt.

Weight: 8.8-9.2 #/gal.

Water Loss: 8-20 cc

Ph: 8.5-9.5

c) From 3733' to 3933'.

Viscosity: 36-45 sec/qt.

Weight: 8.5-9.5 #/gal.

Water Loss: 8-20 cc

Ph: 8.5-9.5

d) from 3933' to total depth with gas.

4-1-81577

IV. MATERIALS:

A. Casing Program:

Hole Size	Depth O.H.	Casing Size	Wt. & Grade	Depth Set
12 14/16"	200'	9 5/8"	32.3# H-40	200'
8 3/4"	3933'	7"	20# K-55	3933'
6 1/4"	2074'	4 1/2"	10.5# K-55	3783'-6007'

B. Float Equipment:

a) Surface casing 9 5/8" -- B & W Regular Pattern Shoe.

b) Intermediate Casing 7" -- Drill guide shoe (Code #50101-070) and self fill insert float collar (Code #53003-070). Seven (7) centralizers (Code #56011-070) spaced every other joint above the shoe.

B. Float Equipment Continued

Place float collar one joint above shoe.

- c) Liner 4 1/2" - Larkin geyser shoe (Fig. 222) and Larkin flapper type float collar (Fig. 404). Brown liner hanger with neoprene pack off.

- C. Tubing Program: 5950', of 2 3/8", 4.7#, EUE, K-55 tubing with seating nipple on top of bottom joint. Expendable check valve on bottom.

- D. Well Head Equipment: Gray well head. Gray representative to set slips and make cut off.

V. CEMENTING:

- A. Surface Casing 9 5/8" - Use 125 sks. Class "B" with 1/4# gel flake per sack and 3% CaCl (100% excess to circulate). WOC 12 hours. Test surface casing to 600 PSI for 30 minutes.

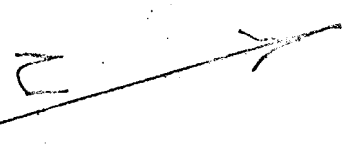
- B. Intermediate Casing 7" - Use 100 sacks Class "B" 65/35 poz with 12% gel and 15.52 gal. water per sack. Tail in with 50 sacks Class "B" with 2% CaCl (65% excess to cover Ojo Alamo). WOC 12 hours. Run temp. survey after 8 hours. Test casing to 600 PSI.

- C. Production Liner 4 1/2" - Use 210 sacks Class "B" with 4% gel and 1/4 cu. ft. of fine Gilsomite per sack. Precede cmt. with 20 bbls. water mixed with 3 sks. gel (70% excess to circulate liner). Set liner pack off and reverse out excess cmt. Run 6 1/4" bit to top of liner and pressure test (test 12 hours after plug is down). Lay down DP and run 3 7/8" bit on 2 3/8" EUE tubing to clean out liner. Perforate 18 hours after plug is down.

DER/ch

1977

W
W
I



SCALE: 1 cm = 20'

3 1977

NORTHWEST PIPELINE CORPORATION

MULTI - POINT SURFACE USE PLAN

for the San Juan 29-6 Unit

Well Number 33A

11 18 1977

1. Existing Roads: See attached topographic map. All existing roads used, shall be maintained in a serviceable condition at all times during the drilling operation.
2. Planned Access Roads: See attached topographic map. Maximum grade is approximately 1%. The road surface will not exceed twenty feet in width. Upon completion of drilling operations the access road will be adequately drained to control runoff and soil erosion. Drainage facilities may include ditches, water bars, culverts or any other measure deemed necessary. All activities will be confined to the access road and drill pad.
3. Location of Existing Wells: See attached topographic map.
4. Location of Tank Batteries; Production Facilities; and Production, Gathering, and Service Lines: See attached topographic map for locations of existing and proposed gas gathering lines.
5. Location and Type of Water Supply: Water needed for the drilling operation will be hauled from the San Juan 29-6 Unit Water Well located in SW/4 28, T29N, R6W.
6. Source of Construction Materials: No additional materials will be needed.
7. Methods for Handling Waste Disposal: All garbage, debris, and trash will be buried at least three feet deep. A portable toilet will be supplied for human waste. After drilling operations have been completed the reserve pit will be fenced and the liquid portion will be allowed to evaporate before the location is cleaned up and leveled. The earthen pits will not be located on natural drainages and will be constructed in such a manner so that they will not leak. Any evaporator pit containing toxic liquids will be fenced.
8. Ancillary Facilities: There will be no camps or airstrips associated with the drilling of this well.
9. Well Site Layout: See attached location layout sheet. There will be a drainage ditch above the cut slope.
10. Plans for Restoration of the Surface: Upon completion of drilling, the location will be cleaned, and leveled so that no cut or fill banks will be steeper than 3:1.

All of the area disturbed in connection with the drill site will be seeded as close as possible for any above ground equipment while still allowing for access to the equipment. Seeding will be done within one year after drilling is completed and during the period from July 1 through September 15. Seeding will be done with seed Mixture #1.

All equipment above ground will be painted a non-glare, non-reflective, non-chalking color that simulates the natural color of the site. For this well code number 595-34.27, Green.

11. Other Information: If, during operations, any historic or prehistoric ruin, monument or site, or any object of antiquity is discovered, then work will be suspended and the discovery will be reported to the District Manager of the BLM.

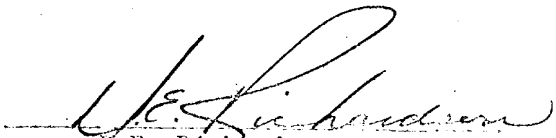
When drilling with gas, the line used to discharge and burn off the gas will be located so as not to damage vegetation in the area, and if necessary a earthen screen will be constructed to protect the vegetation. All liquid from the line will be contained at the site unless otherwise specified by the surface agency's representative.

The area covered by the location and proposed access road is gently sloped with scattered brush and some grasses.

12. Operator's Representative: D.E. Richardson, P.O. Box 90 - Farmington, New Mexico 87401. Phone: 327-5351 Extension #38.
13. Certification:

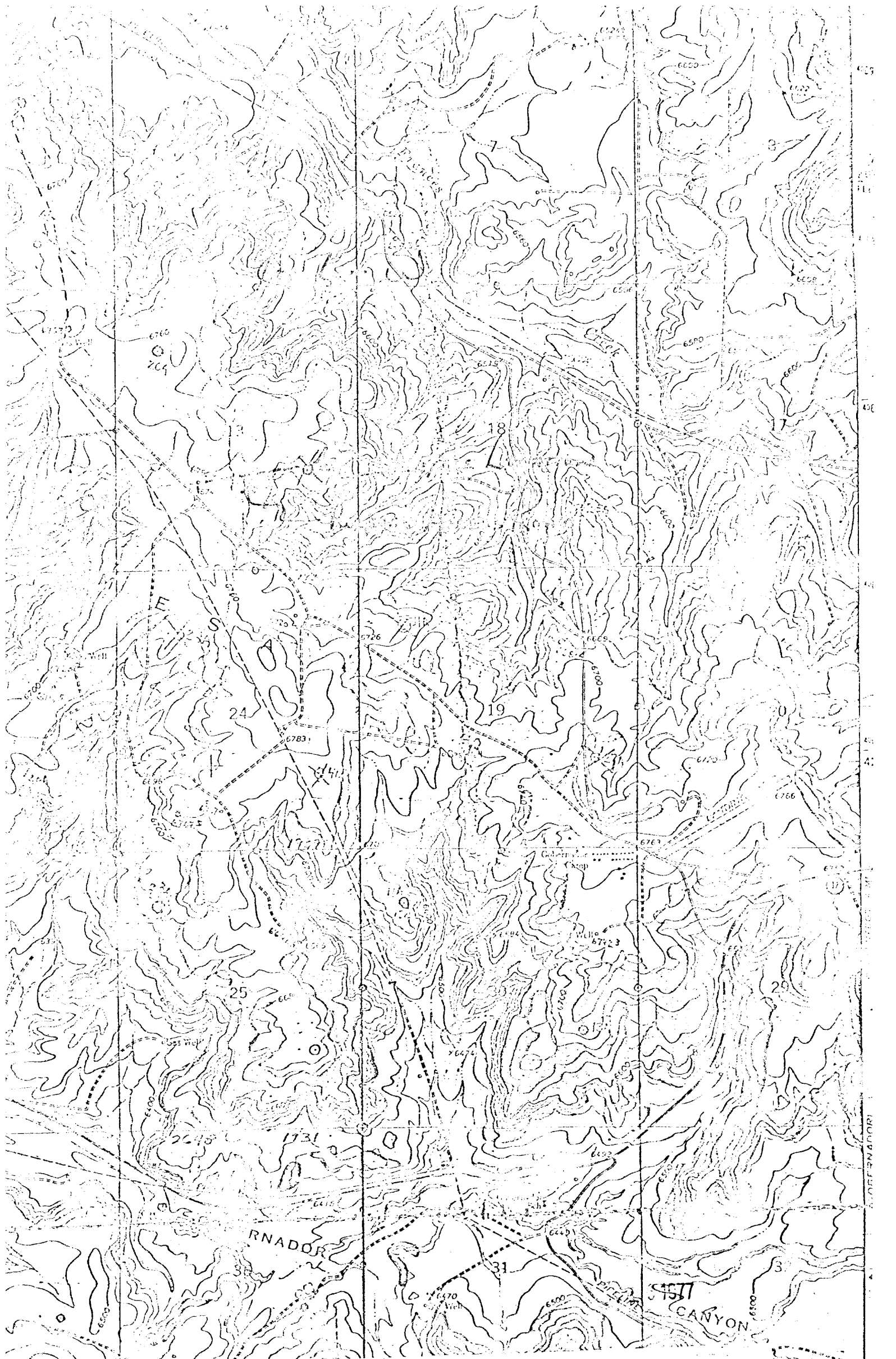
I hereby certify that I have inspected the proposed drillsite and access route; that I am familiar with the conditions which presently exist; that the statements made in this plan are, to the best of my knowledge true and correct; and, that the work associated with the operations proposed herein will be performed by Northwest Pipeline Corporation and its contractors and subcontractors in conformity with this plan and the terms and conditions under which it is approved.

11-14-77
Date


D.E. Richardson
Drilling Engineer

DER/ch

11-13-77



Vicinity Map for
NORTHWEST PIPELINE CORP. #33A San Juan 29-6 Unit
1850'FEL 900'FEL Sec 13-T29N-R6W
Rio Arriba County, New Mexico