

UNITED STATES
DEPARTMENT OF THE INTERIOR
BUREAU OF LAND MANAGEMENT

RECEIVED
BLM

Sundry Notices and Reports on Wells

NOV 12 PM 2:27

1. Type of Well
GAS

070 FARMINGTON, NM

5. Lease Number
NM-0558139
6. If Indian, All. or
Tribe Name

2. Name of Operator

**BURLINGTON
RESOURCES**

OIL & GAS COMPANY

7. Unit Agreement Name

3. Address & Phone No. of Operator

PO Box 4289, Farmington, NM 87499 (505) 326-9700

8. Well Name & Number
Creek #2

9. API Well No.
30-039-22547

4. Location of Well, Footage, Sec., T, R, M

2010' FNL, 1120' FEL, Sec. 4, T-29-N, R-5-W, NMPM

10. Field and Pool
Blanco Pict. Cliffs

11. County and State
Rio Arriba Co, NM

12. CHECK APPROPRIATE BOX TO INDICATE NATURE OF NOTICE, REPORT, OTHER DATA

Type of Submission

Type of Action

<input checked="" type="checkbox"/> Notice of Intent	<input checked="" type="checkbox"/> Abandonment	<input checked="" type="checkbox"/> Change of Plans
<input type="checkbox"/> Subsequent Report	<input type="checkbox"/> Recompletion	<input type="checkbox"/> New Construction
<input type="checkbox"/> Final Abandonment	<input type="checkbox"/> Plugging Back	<input type="checkbox"/> Non-Routine Fracturing
	<input type="checkbox"/> Casing Repair	<input type="checkbox"/> Water Shut off
	<input type="checkbox"/> Altering Casing	<input type="checkbox"/> Conversion to Injection
	<input type="checkbox"/> Other -	

13. Describe Proposed or Completed Operations

It is intended to plug and abandon the subject well according to the attached procedure and wellbore diagram.

(Verbal approval to plug and abandon from Wayne Townsend, BLM 11-10-97)

RECEIVED
NOV 13 1997

OIL CON. DIV.
DIST. 3

14. I hereby certify that the foregoing is true and correct.

Signed Nancy Olthmann (KLM7) Title for Regulatory Administrator Date 11/10/97

(This space for Federal or State Office use)

APPROVED BY /s/ Duane W. Spencer

Title _____

Date NOV 17 1997

CONDITION OF APPROVAL, if any:

PLUG & ABANDONMENT PROCEDURE

11/10/97

Creek No. 2
Blanco Pictured Cliffs
NE Section 4, T29N R5W
Rio Arriba County, NM

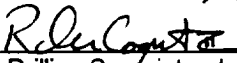
Note: All cement volumes use 100% excess outside pipe and 50' excess inside pipe. The stabilizing wellbore fluid will be 8.3 ppg, sufficient to balance all exposed formation pressures.

1. Set CIBP on wireline at 3269'. Perforate squeeze holes at 2437', 1162' and at 370'.
2. **Plug #1 (Pictured Cliffs, Fruitland and Kirtland Tops, 2576' - 3269')**: RIH with cement retainer and set at 3107'. Establish pump-in rate into PC perms. Mix and pump 69 sxs of Class B cement (25 sxs under retainer and 44 sxs above). Sting out of retainer and POOH.
3. **Plug #2 (Ojo Alamo Top, 2337' - 2437')**: RIH with Cement retainer and set at 2387'. Establish pump-in rate under the retainer. Mix and pump 53 sxs of Class B cement (43 sxs under the retainer and 10 sxs above). Sting out and POOH.
4. **Plug #3 (Nacimiento Top, 1062' - 1162')**: RIH with Cement retainer and set at 1112'. Establish pump-in rate under the retainer. Mix and pump 53 sxs of Class B cement (43 sxs under the retainer and 10 sxs above). Sting out and POOH laying down workstring.
5. **Plug #4 (Surface to 370')**: Establish circulation down 4-1/2" casing and out bradenhead. Mix and pump 130 sxs Class B cement to circulate to surface.
6. ND BOP and cut off wellhead below surface. Install P&A marker to comply with regulations. RD, MOL, cut off anchors, and restore location.

Recommended:

 11/10/97
Operations Engineer

Approval:

 11/10/97
Drilling Superintendent

Creek #2
Current
DPNO 10393
 Blanco Pictured Cliffs
 NE Section 4, T-29-N, R-5-W, Rio Arriba County, NM
 Latitude/Longitude: 36°45.3772' / 107°21.4142'

Today's Date: 5-8-97

Spud: 12-15-80

Completed: 1-25-81

Logs: IEL, CDL-GR,
 Temp. Survey

Elevation: 6343' (GL)
 6355' (KB)

Workovers: (12/82) Shut off Wtr.
 Ran Baker FB Model C Pkr to
 shut off water.

12-1/4" hole

8-5/8", 24.0#, K-55, Csg set @ 320',
 Cmt w/350 sx

Multiple Casing Holes from
 540' to below 2728'.

Nacimiento @ 1112'

Top of Cmt @ 2300' (TS)

Ojo Alamo @ 2387'

Kirtland @ 2626'

Fruitland @ 2950'

Pictured Cliffs @ 3152'

Pictured Cliffs Perforations:
 3157' - 3391', Total 18 holes

7-7/8" hole

PBTD 3410'

TD 3450'

4-1/2", 10.5#, K-55, Csg set @ 3448'
 Cmt w/260 sx

Initial Potential		Production History	Gas	Oil	Ownership		Pipeline
Initial AOF:	2155 Mcfd (1/81)	Cumulative:	214.0 MMcf	0.0 Mbo	GWL:	25.00%	WFS
Current SICP:	911 psig (5/84)	Current:	72.5 Mcfd	0.0 bbls/d	NRI:	21.88%	
					TRUST:	75.00%	

Creek #2
Proposed P&A
DPNO 10393
Blanco Pictured Cliffs
NE Section 4, T-29-N, R-5-W, Rio Arriba County, NM
Latitude/Longitude: 36°45.3772' / 107°21.4142'

Today's Date: 5-8-97

Spud: 12-15-80

Completed: 1-25-81

Logs: IEL, CDL-GR,

Temp. Survey

Elevation: 6343' (GL)

6355' (KB)

Workovers: (12/82) Shut off Wtr:

Ran Baker FB Model C Pkr to
shut off water.

Nacimiento @ 1112'

Ojo Alamo @ 2387'

Kirtland @ 2626'

Fruitland @ 2950'

Pictured Cliffs @ 3152'

12-1/4" hole

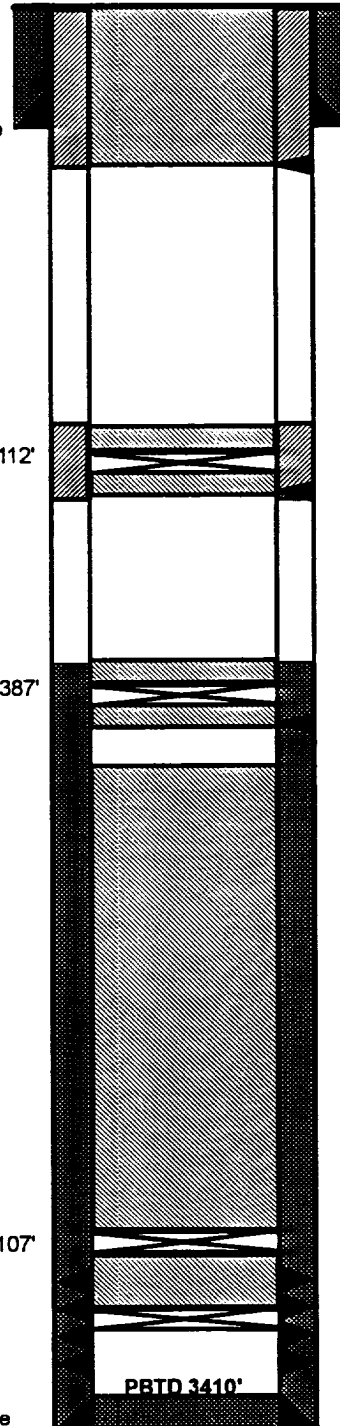
Cmt. Ret. @ 1112'

Cmt. Ret. @ 2387'

Cmt. Ret. @ 3107'

CIBP @ 3269'

7-7/8" hole



8-5/8", 24.0#, K-55, Csg set @ 320',
Cmt w/350 sx

Plug # 4 (Surface - 370'): Perf at
370', 130 sxs cement (97 sxs
outside, 33 sxs inside)

Multiple Casing Holes from
540' to below 2728'.

Plug # 3 (1062' - 1162'): Perf at
1162', 53 sxs cement (43 sxs
under retainer, 10 sxs above
retainer)

Top of Cmt @ 2300' (TS)

Plug # 2 (2337' - 2437'): Perf at
2437', 53 sxs cement (43 sxs
under retainer, 10 sxs above
retainer)

Plug # 1 (2576' - 3269'): 69 Sxs
(25 sxs under retainer, 44 sxs
above retainer.

Pictured Cliffs Perforations:
3157' - 3391', Total 18 holes

4-1/2", 10.5#, K-55, Csg set @ 3448'
Cmt w/260 sx

TD 3450'

Initial Potential

Initial AOF: 2155 Mcfd (1/81)
Current SICP: 911 psig (5/84)

Production History

Cumulative:
Current:

Gas

214.0 MMcf
72.5 Mcfd

Oil

0.0 Mbo
0.0 bbls/d

Ownership

GW: 25.00%
NRI: 21.88%
TRUST: 75.00%

Pipeline

WFS