

UNITED STATES
DEPARTMENT OF THE INTERIOR
BUREAU OF LAND MANAGEMENT

APPLICATION FOR PERMIT TO DRILL, DEEPEN, OR PLUG BACK

1A. TYPE OF WORK

DRILL ☒

DEEPEN ☐

PLUG BACK ☐

b. TYPE OF WELL

OIL
WELL ☐

GAS
WELL ☒

OTHER

SINGLE
ZONE ☐

MULTIPLE
ZONE ☐

2. NAME OF OPERATOR

Northwest Pipeline Corporation

3. ADDRESS OF OPERATOR

3539 East 30th Street - Farmington, NM 87401

4. LOCATION OF WELL (Report location clearly and in accordance with any State requirements.)*

At surface

1465' FNL & 1350' FEL

At proposed prod. zone

1375' 1075'

Same

14. DISTANCE IN MILES AND DIRECTION FROM NEAREST TOWN OR POST OFFICE*

6 miles to Gobernador

15. DISTANCE FROM PROPOSED*

LOCATION TO NEAREST
PROPERTY OR LEASE LINE, FT.
(Also to nearest drlg. unit line, if any)

1350'

16. NO. OF ACRES IN LEASE

11/8.60

17. NO. OF ACRES ASSIGNED

TO THIS WELL

318.95

18. DISTANCE FROM PROPOSED LOCATION*

TO NEAREST WELL, DRILLING, COMPLETED,
OR APPLIED FOR, ON THIS LEASE, FT.

+ 400'

19. PROPOSED DEPTH

3670'

20. ROTARY OR CABLE TOOLS

Rotary

21. ELEVATIONS (Show whether DF, RT, GR, etc.)

6795' GR TDS 7-9-79

23.

and appeal pursuant to 43 CFR 3165.3
and appeal pursuant to 43 CFR 3165.4.

22. APPROX. DATE WORK WILL START*

11-15-89

SIZE OF HOLE	SIZE OF CASING	WEIGHT PER FOOT	SETTING DEPTH	QUANTITY OF CEMENT
13-1/2"	9-5/8"	36#	200'	125 cu.ft.
8-3/4"	7"	20#	3460'	910 cu.ft.
6-1/4"	5-1/2"	23#	3350'-3670'	Open hole

- 1) Plan to drill Fruitland Coal and set liner in open hole. Coal zones will be perforated.
- 2) The east half of Section 6 is dedicated to this well.

RECEIVED
DEC 15 1989
OIL CON. DIV
DIST. 3

IN ABOVE SPACE DESCRIBE PROPOSED PROGRAM: If proposal is to deepen or plug back, give data on present productive zone and proposed new productive zone. If proposal is to drill or deepen directionally, give pertinent data on subsurface locations and measured and true vertical depths. Give blowout preventer program, if any.

24.

SIGNED

J.R. Vaughan
J.R. Vaughan

TITLE

Prod. & Drlg. Engineer

DATE 11-1-89

(This space for Federal or State office use)

PERMIT NO.

APPROVAL DATE

APPROVED BY

CONDITIONS OF APPROVAL, IF ANY:

TITLE

ch-1

SEE ATTACHED FOR
CONDITIONS OF APPROVAL

NMOOD

*See Instructions On Reverse Side

APPROVED
AS AMENDED

DEC 12 1989

John H. Kelly
AREA MANAGER

Submit to Appropriate
District Office
State Lease - 4 copies
Fee Lease - 3 copies

State of New Mexico
Energy, Minerals and Natural Resources Department

Form C-102
Revised 1-1-89

OIL CONSERVATION DIVISION

DISTRICT I
P.O. Box 1980, Hobbs, NM 88240

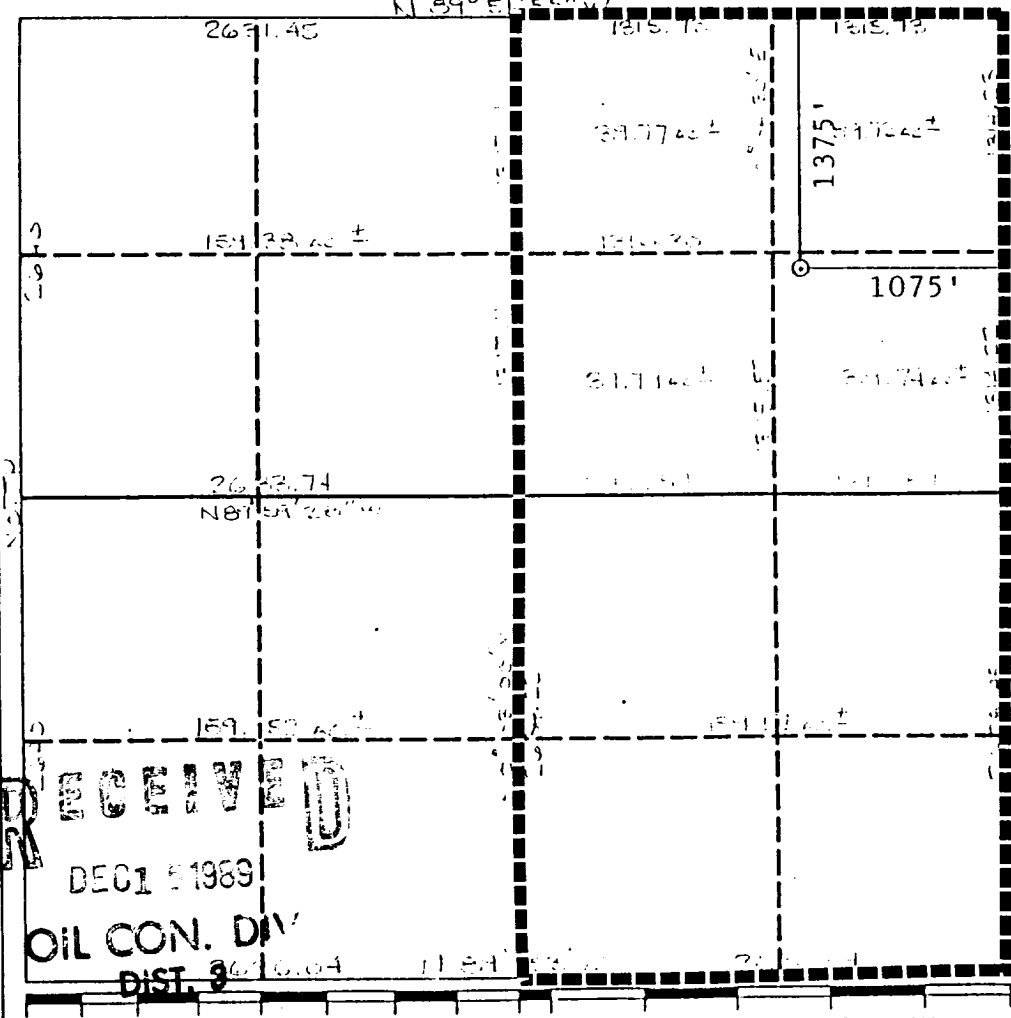
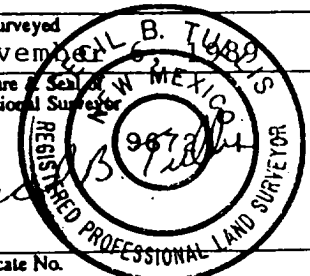
P.O. Box 2088
Santa Fe, New Mexico 87504-2088

DISTRICT II
P.O. Drawer DD, Artesia, NM 88210

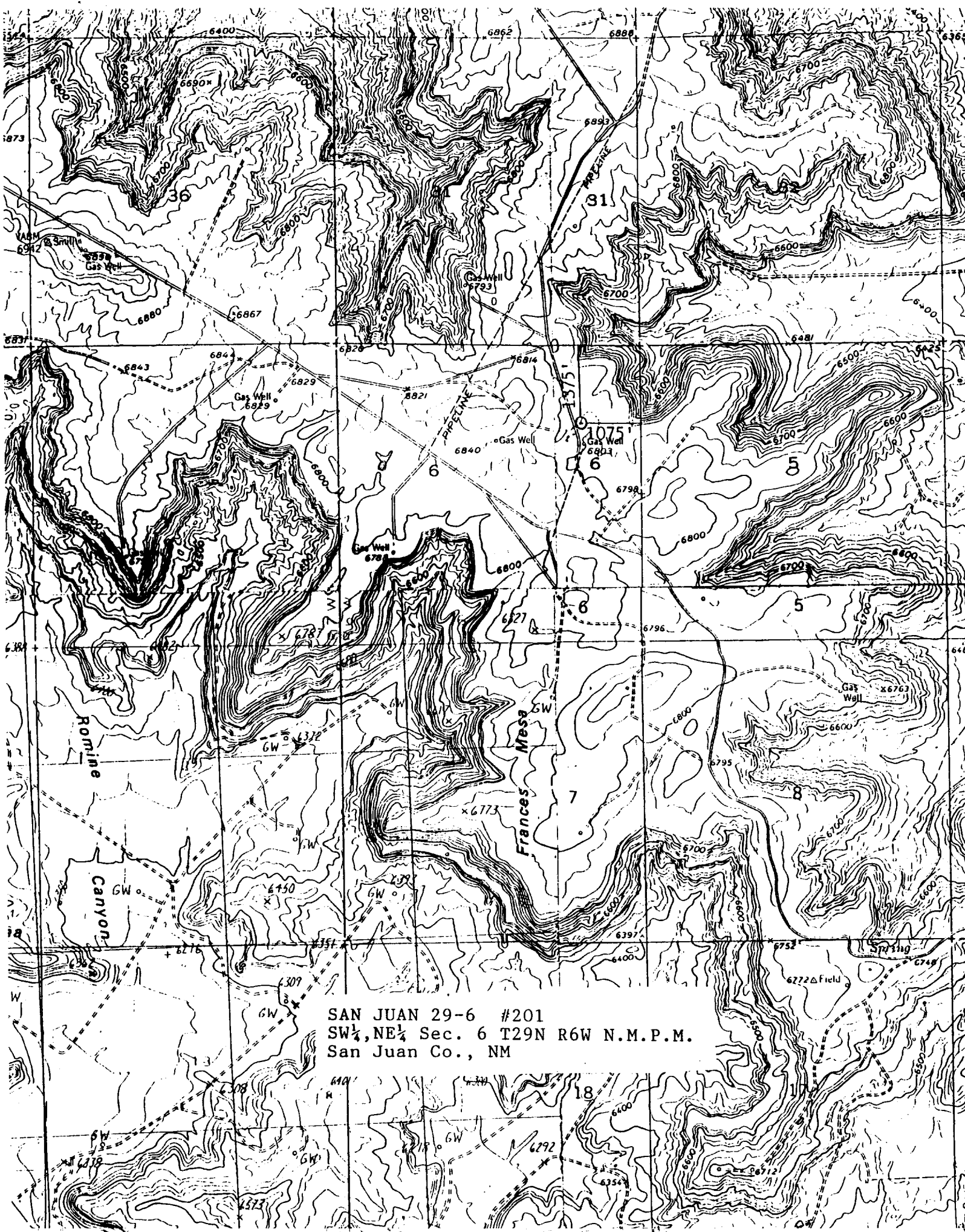
DISTRICT III
1000 Rio Brazos Rd., Aztec, NM 87410

WELL LOCATION AND ACREAGE DEDICATION PLAT

All Distances must be from the outer boundaries of the section

Operator NORTHWEST PIPELINE CORPORATION			Lease SAN JUAN 29-6		Well No. 201
Unit Letter H	Section 6	Township 29N	Range 6W	County NMPM San Juan	
Actual Footage Location of Well: 1375 feet from the North line and 1075 feet from the East line					
Ground level Elev. 6799	Producing Formation Fruitland		Pool Basin Fruitland Coal		Dedicated Acreage: 318.95 Acres
<p>1. Outline the acreage dedicated to the subject well by colored pencil or hatchure marks on the plat below.</p> <p>2. If more than one lease is dedicated to the well, outline each and identify the ownership thereof (both as to working interest and royalty).</p> <p>3. If more than one lease of different ownership is dedicated to the well, have the interest of all owners been consolidated by communization, unitization, force-pooling, etc.? <input checked="" type="checkbox"/> Yes <input type="checkbox"/> No If answer is "yes" type of consolidation <u>unitized</u></p> <p>If answer is "no" list the owners and tract descriptions which have actually been consolidated. (Use reverse side of this form if necessary.)</p> <p>No allowable will be assigned to the well until all interests have been consolidated (by communization, unitization, forced-pooling, or otherwise) or until a non-standard unit, eliminating such interest, has been approved by the Division.</p>					
				OPERATOR CERTIFICATION I hereby certify that the information contained herein is true and complete to the best of my knowledge and belief.	
				Signature <i>Mike Turnbaugh</i> Printed Name Mike Turnbaugh Position Prod. Supt. Company Northwest Pipeline Corp. Date 11-09-89	
				SURVEYOR CERTIFICATION I hereby certify that the well location shown on this plat was plotted from field notes of actual surveys made by me or under my supervision, and that the same is true and correct to the best of my knowledge and belief.	
				Date Surveyed November 6, 1989 Signature of Seal of Professional Surveyor <i>Cecil B. Turley</i>  Certificate No. 9672	

RECEIVED
DEC 15 1989
OIL CON. DIV
DIST. 3



SAN JUAN 29-6 #201
SW $\frac{1}{4}$, NE $\frac{1}{4}$ Sec. 6 T29N R6W N.M.P.M.
San Juan Co., NM