

UNITED STATES
DEPARTMENT OF THE INTERIOR
BUREAU OF LAND MANAGEMENT

APPLICATION FOR PERMIT TO DRILL, DEEPEN, OR PLUG BACK

1a. TYPE OF WORK

DRILL ☒

DEEPEN ☐

PLUG BACK ☐

b. TYPE OF WELL

OIL
WELL ☐

GAS
WELL ☒

OTHER

SINGLE
ZONE ☒

MULTIPLE
ZONE ☐

2. NAME OF OPERATOR

Phillips Petroleum Company 17654

3. ADDRESS OF OPERATOR

300 W. Arrington, Suite 200, Farmington, N.M. 87401

4. LOCATION OF WELL (Report location clearly and in accordance with any State requirements.)

At surface Unit N, 1286' FSL & 1409' FWL

At proposed prod. zone Unit N, 1286' FSL & 1409' FWL

14. DISTANCE IN MILES AND DIRECTION FROM NEAREST TOWN OR POST OFFICE*

Approx 23 miles east from Blanco

15. DISTANCE FROM PROPOSED LOCATION TO NEAREST PROPERTY OR LEASE LINE, FT. (Also to nearest drig. unit line, if any)

9152' FEL of SJ 29-6 Unit

16. NO. OF ACRES IN LEASE

2540.77

17. NO. OF ACRES ASSIGNED TO THIS WELL

320 Ac. W/2 of Section

18. DISTANCE FROM PROPOSED LOCATION TO NEAREST WELL, DRILLING, COMPLETED, OR APPLIED FOR, ON THIS LEASE, FT.

305' NW from #104

19. PROPOSED DEPTH

3650' (+)

20. ROTARY OR CABLE TOOLS

Rotary

21. ELEVATIONS (Show whether DF, RT, GR, etc.)

6697' (GL Unprepared)

22. APPROX. DATE WORK WILL START*

Upon Approval

23.

PROPOSED CASING AND CEMENTING PROGRAM

DRILLING OPERATIONS AUTHORIZED ARE
SUBJECT TO QUANTITY OF CEMENT ATTACHED

SIZE OF HOLE	SIZE OF CASING	WEIGHT PER FOOT	SETTING DEPTH	
12-1/4"	9-5/8"	36#, K-55	250'	150 sxs, Circ to Surface
8-1/2"	7"	23#, K-55	3355'	500 sxs, Circ to Surface
6-1/8"	5-1/2"	15.5# or 23#	3255'- 3593'	*

*If the coal is cleated a 5-1/2", 23#, P-110 liner will be run in the open hole without being cemented.

*If the coal is not cleated a 5-1/2", 15.5#, K-55 liner will be run, cemented with 100 sxs cement and the well will be fractured.

RECEIVED
MAR 30 1990
OIL CON. DIV.
DIST. 3

Mud program and BOP equipment - See attached.

IN ABOVE SPACE DESCRIBE PROPOSED PROGRAM: If proposal is to deepen or plug back, give data on present productive zone and proposed new productive zone. If proposal is to drill or deepen directionally, give pertinent data on subsurface locations and measured and true vertical depths. Give blowout preventer program, if any.

24.

SIGNED

J.M. Sanders

TITLE Supervisor Regulatory Affairs

DATE Feb. 7, 1990

(This space for Federal or State office use)

PERMIT NO.

APPROVAL DATE

APPROVED BY

TITLE

CONDITIONS OF APPROVAL, IF ANY:

APPROVED
AS AMENDED

MAR 28 1990

AREA MANAGER

OIL CON. DIV.

● ● ● ● ●

Submit to Appropriate
District Office
State Lease - 4 copies
Fee Lease - 3 copies

State of New Mexico
Energy, Minerals and Natural Resources Department

Form 1-102
Revised 1-1-89

OIL CONSERVATION DIVISION

P.O. Box 2088
Santa Fe, New Mexico 87504-2088

DISTRICT I
P.O. Box 1980, Hobbs, NM 88240

DISTRICT II
P.O. Drawer DD, Artesia, NM 88210

DISTRICT III
1000 Rio Brazos Rd., Aztec, NM 87410

WELL LOCATION AND ACREAGE DEDICATION PLAT

All Distances must be from the outer boundaries of the section

Operator PHILLIPS PETROLEUM			Lease SAN JUAN 29-6 UNIT			Well No. 227		
Unit Letter N	Section 14	Township T.29 N.	Range R.6 W.	County NMPM RIO ARriba COUNTY				

Actual Footage Location of Well: 1286 feet from the SOUTH line and 1409 feet from the WEST line					
Ground level Elev. 6697	Producing Formation Fruitland		Pool Basin Fruitland Coal Gas		Dedicated Acreage: 320 Acres

1. Outline the acreage dedicated to the subject well by colored pencil or hatchure marks on the plat below.

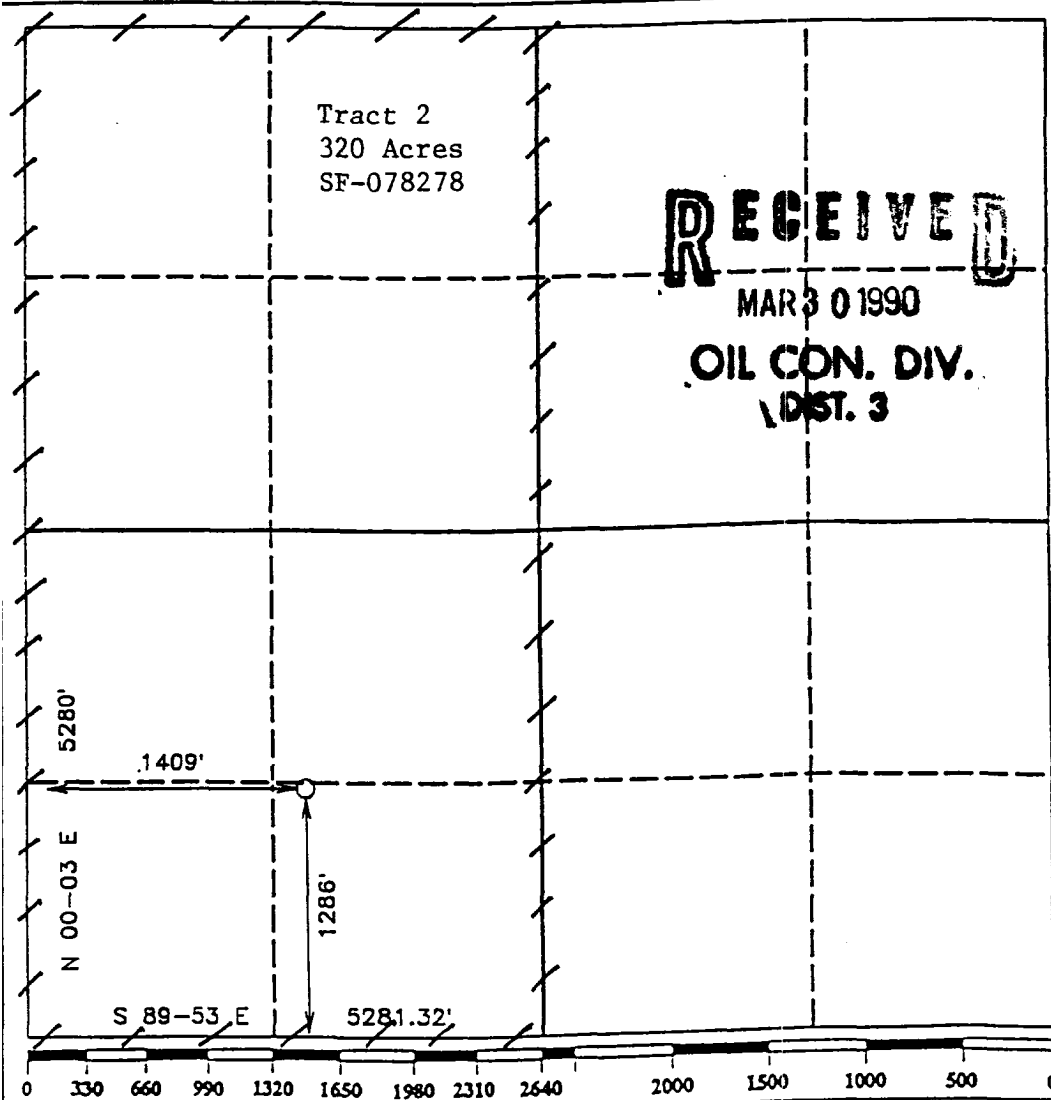
2. If more than one lease is dedicated to the well, outline each and identify the ownership thereof (both as to working interest and royalty).

3. If more than one lease of different ownership is dedicated to the well, have the interest of all owners been consolidated by communitization, unitization, force-pooling, etc.?

☐ Yes ☐ No If answer is "yes" type of consolidation _____

If answer is "no" list the owners and tract descriptions which have actually been consolidated. (Use reverse side of this form if necessary.) _____

No allowable will be assigned to the well until all interests have been consolidated (by communitization, unitization, forced-pooling, or otherwise), or until a non-standard unit, eliminating such interest, has been approved by the Division.



OPERATOR CERTIFICATION

I hereby certify that the information contained herein is true and complete to the best of my knowledge and belief.

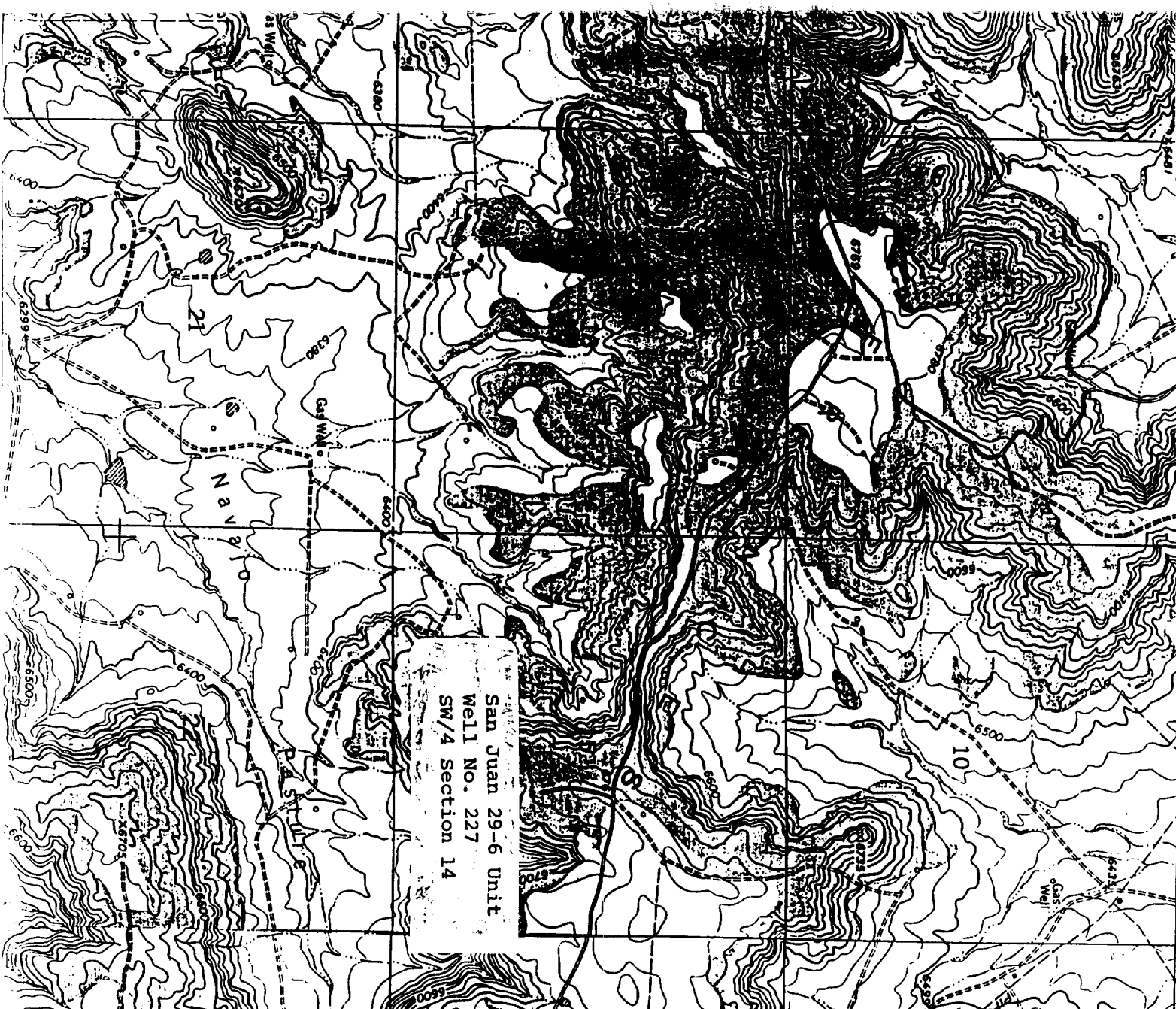
Signature
L. M. Sanders
Printed Name
L. M. Sanders
Position
Supv., Regulatory Affairs
Company
Phillips Petroleum Company
Date
Feb. 7, 1990

SURVEYOR CERTIFICATION

I hereby certify that the well location shown on this plat was plotted from field notes of actual surveys made by me or under my supervision, and that the same is true and correct to the best of my knowledge and belief.

Date Surveyed
DECEMBER 14, 1989
Signature & Seal of
Professional Surveyor
R. HOWARD DICK
Certificate No. Land Surveyor
9679

10-11-68
MAR 3 0 1968
OIL CON. DIV.
DET. 3



San Juan 29-6 Unit
Well No. 227
SW/4 Section 14