

UNITED STATES
DEPARTMENT OF THE INTERIOR
BUREAU OF LAND MANAGEMENT

APPLICATION FOR PERMIT TO DRILL, DEEPEN, OR PLUG BACK

1a. TYPE OF WORK

DRILL ☒

DEEPEN ☐

PLUG BACK ☐

b. TYPE OF WELL

OIL
WELL ☐

GAS
WELL ☒

OTHER

SINGLE
ZONE ☒

MULTIPLE
ZONE ☐

2. NAME OF OPERATOR

Northwest Pipeline Corporation

3. ADDRESS OF OPERATOR

3539 East 30th Street - Farmington, NM 87401

4. LOCATION OF WELL (Report location clearly and in accordance with any State requirements.)*

At surface

1990' FSL & 930' FWL

At proposed prod. zone

Same

14. DISTANCE IN MILES AND DIRECTION FROM NEAREST TOWN OR POST OFFICE*

6 miles to Gobernador

15. DISTANCE FROM PROPOSED*

LOCATION TO NEAREST
PROPERTY OR LEASE LINE, FT.
(Also to nearest drlg. unit line, if any)

930'

16. NO. OF ACRES IN LEASE

360

17. NO. OF ACRES ASSIGNED
TO THIS WELL

W/320

18. DISTANCE FROM PROPOSED LOCATION*

TO NEAREST WELL, DRILLING, COMPLETED,
OR APPLIED FOR, ON THIS LEASE, FT.

± 300'

19. PROPOSED DEPTH

3155'

20. ROTARY OR CABLE TOOLS

Rotary

21. ELEVATIONS (Show whether DF, RT, GR, etc.)

6300' GR

DRILLING OPERATIONS AUTHORIZED ARE

22. APPROX. DATE WORK WILL START*

11-1-89

23. SUBJECT TO COMPLIANCE WITH ATTACHED

PROPOSED CASING AND CEMENTING PROGRAM
"GENERAL REQUIREMENTS"

This action is subject to technical and
procedural review pursuant to 43 CFR 3160.3
and appeal pursuant to 43 CFR 3160.4.

SIZE OF HOLE	SIZE OF CASING	WEIGHT PER FOOT	SETTING DEPTH	
13-1/2"	9-5/8"	36#	200'	164 sx (195 cu.ft.)
8-3/4"	7"	20#	3000'	410 sx (767 cu.ft.)
6-1/4"	5-1/2"	23#	2900'-3155'	Open hole

1) Plan to drill Fruitland Coal from 3050' to 3155' and set liner in open hole.
Coal zones will be perforated.

2) The west half of Section 20 is dedicated to this well.

RECEIVED
MAY 07 1990
OIL CON. DIV
DIST. 3

IN ABOVE SPACE DESCRIBE PROPOSED PROGRAM: If proposal is to deepen or plug back, give data on present productive zone and proposed new productive zone. If proposal is to drill or deepen directionally, give pertinent data on subsurface locations and measured and true vertical depths. Give blowout preventer program, if any.

24.

SIGNED

J.R. Vaughan

TITLE

Prod. & Drlg. Engineer

DATE

10-9-89

(This space for Federal or State office use)

PERMIT NO.

APPROVAL DATE

APPROVED BY

TITLE

DATE

CONDITIONS OF APPROVAL, IF ANY:

ch-1

OK
(9)

NMOCD

*See Instructions On Reverse Side

APPROVED
AS AMENDED

MAY 04 1990

AREA MANAGER

1919730
1919730
1919730

1919730
1919730
1919730

1919730
1919730
1919730

Submit to Appropriate
District Office
State Lease - 4 copies
Fee Lease - 3 copies

State of New Mexico
Energy, Minerals and Natural Resources Department

Form C-102
Revised 1-1-89

OIL CONSERVATION DIVISION

P.O. Box 2088
Santa Fe, New Mexico 87504-2088

DISTRICT I
P.O. Box 1980, Hobbs, NM 88240

DISTRICT II
P.O. Drawer DD, Artesia, NM 88210

DISTRICT III
1000 Rio Brazos Rd., Aztec, NM 87410

WELL LOCATION AND ACREAGE DEDICATION PLAT

All Distances must be from the outer boundaries of the section

Operator NORTHWEST PIPELINE			Lease SAN JUAN 29-6		Well No. 210
Unit Letter L	Section 20	Township 29N	Range 6W	County NMPM RIO ARRIBA	
Actual Footage Location of Well: 1990 feet from the SOUTH line and 930 feet from the WEST line					
Ground level Elev. 6300	Producing Formation Fruitland		Pool Basin Fruitland	Dedicated Acreage: 320 Acres	

1. Outline the acreage dedicated to the subject well by colored pencil or hatchure marks on the plat below.

2. If more than one lease is dedicated to the well, outline each and identify the ownership thereof (both as to working interest and royalty).

3. If more than one lease of different ownership is dedicated to the well, have the interest of all owners been consolidated by communitization, unitization, force-pooling, etc.?

☒ Yes ☐ No If answer is "yes" type of consolidation **unitized**

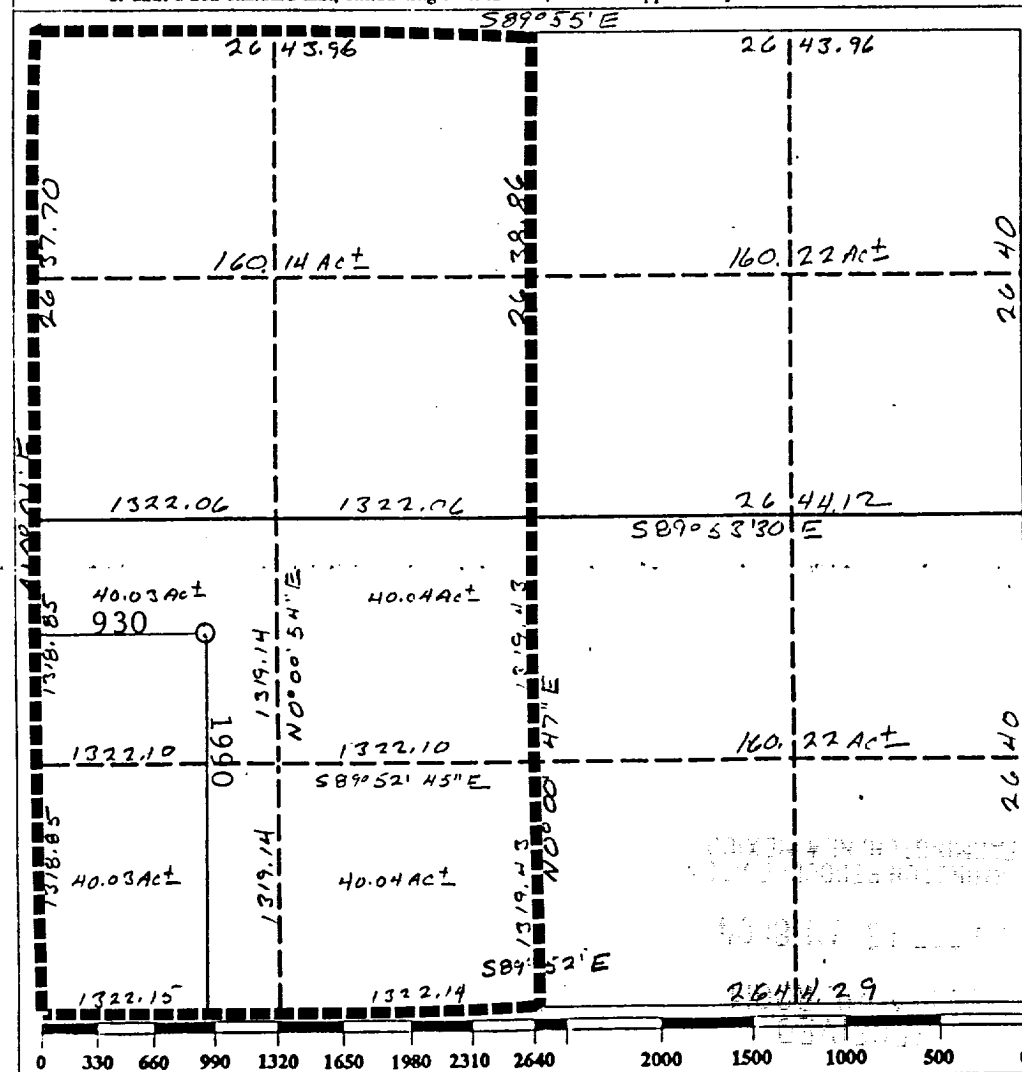
If answer is "no" list the owners and tract descriptions which have actually been consolidated. (Use reverse side of this form if necessary.)

No allowable will be assigned to the well until all interests have been consolidated (by communitization, unitization, forced-pooling, or otherwise) or until a non-standard unit, eliminating such interest, has been approved by the Division.

RECEIVED

MAY 07 1990

OIL CON. DIV



OPERATOR CERTIFICATION

I hereby certify that the information contained herein is true and complete to the best of my knowledge and belief.

Signature
Printed Name
Jeff Vaughan
Position
Engineer
Company
Northwest Pipeline Corp.
Date
10-3-89

SURVEYOR CERTIFICATION

I hereby certify that the well location shown on this plat was plotted from field notes of actual surveys made by me or under my supervision, and that the same is true and correct to the best of my knowledge and belief.

September 21, 1989

Date Surveyed
Signature and Seal of Professional Surveyor
9672
REGISTERED PROFESSIONAL SURVEYOR
NEW MEXICO
9672

GEOLOGICAL SURVEY

