

Submit to Appropriate
District Office
State Lease - 6 copies
Fee Lease - 5 copies

State of New Mexico
Energy, Minerals and Natural Resources Department

Form C-101
Revised 1-1-89

OIL CONSERVATION DIVISION
P.O. Box 2088
Santa Fe, New Mexico 87504-2088

DISTRICT I
P.O. Box 1980, Hobbs, NM 88240

DISTRICT II
P.O. Drawer DD, Artesia, NM 88210

DISTRICT III
1000 Rio Brazos Rd., Aztec, NM 87410

API NO. (assigned by OCD on New Wells)

30-039-24713

5. Indicate Type of Lease

STATE ☒

FEE ☐

6. State Oil & Gas Lease No.

E-289-45

APPLICATION FOR PERMIT TO DRILL, DEEPEN, OR PLUG BACK

1a. Type of Work:

DRILL ☒

RE-ENTER ☐

DEEPEN ☐

PLUG BACK ☐

b. Type of Well:

OIL
WELL ☐

GAS
WELL ☒

OTHER ☐

SINGLE
ZONE ☒

MULTIPLE
ZONE ☐

7. Lease Name or Unit Agreement Name

San Juan 29-6 Unit

8. Well No.

255

9. Pool name or Wildcat

Basin Fruitland Coal

2. Name of Operator

Phillips Petroleum Company

3. Address of Operator

300 W. Arrington, Suite 200, Farmington, N.M. 87401

4. Well Location

Unit Letter N : 950 Feet From The South Line and 1872 Feet From The West Line

Section 32

Township 29N

Range 6W

NMPM

Rio Arriba

County

10. Proposed Depth

3600'

11. Formation

Fruitland

12. Rotary or C.T.

Rotary

13. Elevations (Show whether DF, RT, GR, etc.)
6746' (GL Unprepared)

14. Kind & Status Plug. Bond
Blanket

15. Drilling Contractor
Advise Later

16. Approx. Date Work will start
Upon Approval

17. PROPOSED CASING AND CEMENT PROGRAM

SIZE OF HOLE	SIZE OF CASING	WEIGHT PER FOOT	SETTING DEPTH	SACKS OF CEMENT	EST. TOP
12-1/4"	9-5/8"	36#, K-55	250'	200 Sxs	Circ to Surface
8-3/4"	7"	23#, K-55	3471'	600 Sxs	Circ to Surface
6-1/8"	5-1/2"	15.5# or 23#	3371'-3600'		*

*If the coal is cleated a 5-1/2", 23#, P-110 liner will be run in the open hole without being cemented.

*If the coal is not cleated the well will be stimulated and a 5-1/2", 15.5#, J-55 liner will be run without being cemented.

APPROVAL EXPIRES 12-1-90
UNLESS DRILLING IS COMMENCED.
SPUD NOTICE MUST BE SUBMITTED
WITHIN 10 DAYS.

Use mud additives as required for control.

BOP Equipment: See attached schematic (Fig. 7-9 or 7-10)

RECEIVED

MAY 30 1990

OIL CON. DIV
DIST. 3

IN ABOVE SPACE DESCRIBE PROPOSED PROGRAM: IF PROPOSAL IS TO DEEPEN OR PLUG BACK, GIVE DATA ON PRESENT PRODUCTIVE ZONE AND PROPOSED NEW PRODUCTIVE ZONE. GIVE BLOWOUT PREVENTER PROGRAM, IF ANY.

I hereby certify that the information above is true and complete to the best of my knowledge and belief.

SIGNATURE

L. M. Sanders

TITLE

Supv. Regulatory Affairs

DATE

May 30, 1990

TYPE OR PRINT NAME

L. M. Sanders

TELEPHONE NO.

(This space for State Use)

APPROVED BY

[Signature]

DEPUTY OIL & GAS INSPECTOR, DIST. #3

TITLE

DATE

JUN 01 1990

CONDITIONS OF APPROVAL, IF ANY:

RECEIVED
MAY 10 1960
OIL CON. DIV.
DET. 3

RECEIVED
MAY 10 1960
OIL CON. DIV.
DET. 3

MAY 10 1960

RECEIVED MAY 10 1960

Submit to Appropriate
District Office
State Lease - 4 copies
Fee Lease - 3 copies

State of New Mexico
Energy, Minerals and Natural Resources Department

Form C-102
Revised 1-1-89

OIL CONSERVATION DIVISION

DISTRICT I
P.O. Box 1980, Hobbs, NM 88240

P.O. Box 2088
Santa Fe, New Mexico 87504-2088

DISTRICT II
P.O. Drawer DD, Artesia, NM 88210

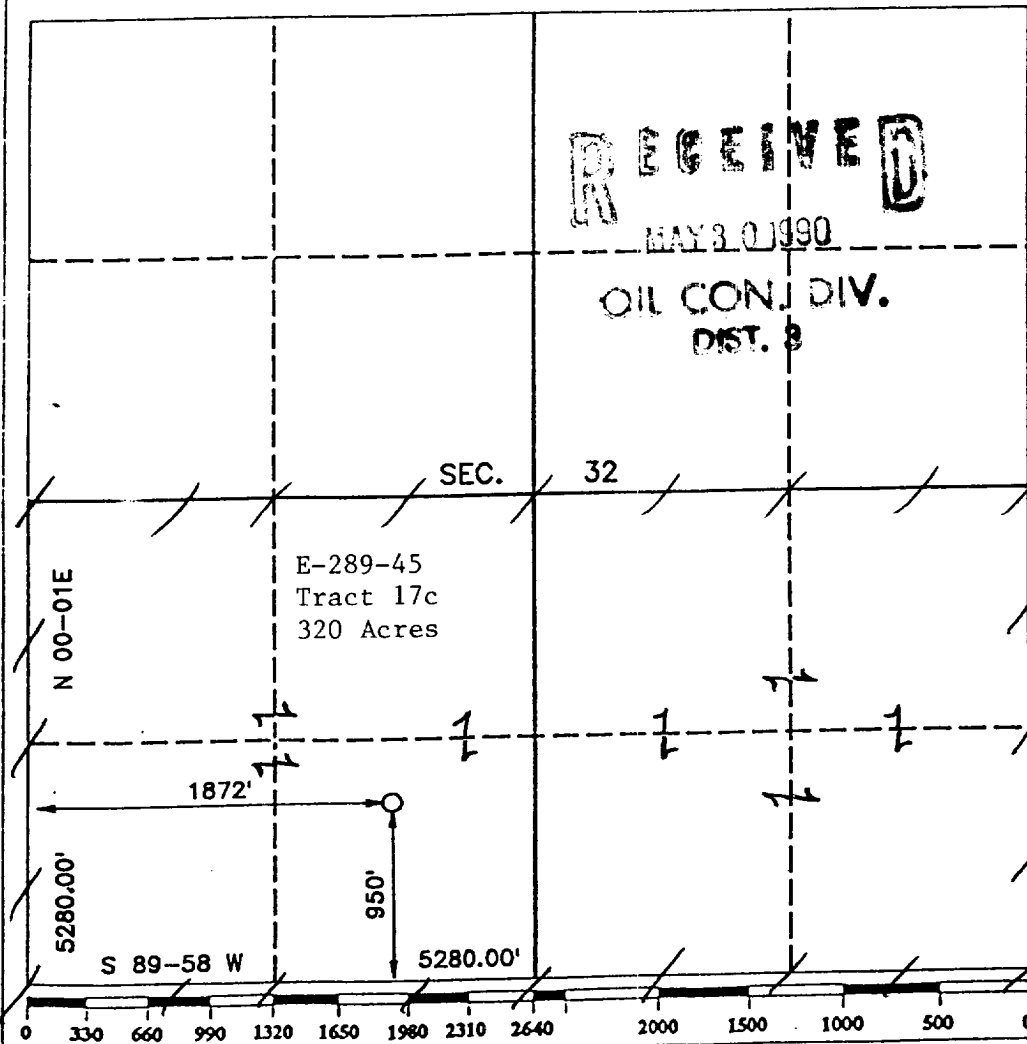
DISTRICT III
1000 Rio Brazos Rd., Aztec, NM 87410

WELL LOCATION AND ACREAGE DEDICATION PLAT

All Distances must be from the outer boundaries of the section

Operator PHILLIPS PETROLEUM		Lease SAN JUAN 29-6 UNIT		Well No. 255
Unit Letter N	Section 32	Township T.29 N.	Range R.6 W.	County RIO ARriba COUNTY
Actual Footage Location of Well: 950 feet from the SOUTH line and 1872 feet from the WEST line				
Ground level Elev. 6746	Producing Formation Fruitland	Pool Basin Fruitland Coal	Dedicated Acreage: 320 Acres	

- Outline the acreage dedicated to the subject well by colored pencil or hatchure marks on the plat below.
- If more than one lease is dedicated to the well, outline each and identify the ownership thereof (both as to working interest and royalty).
- If more than one lease of different ownership is dedicated to the well, have the interest of all owners been consolidated by communitization, unitization, force-pooling, etc.?
☒ Yes ☐ No If answer is "yes" type of consolidation Unitization
If answer is "no" list the owners and tract descriptions which have actually been consolidated. (Use reverse side of this form if necessary.)
No allowable will be assigned to the well until all interests have been consolidated (by communitization, unitization, forced-pooling, or otherwise) or until a non-standard unit, eliminating such interest, has been approved by the Division.



OPERATOR CERTIFICATION

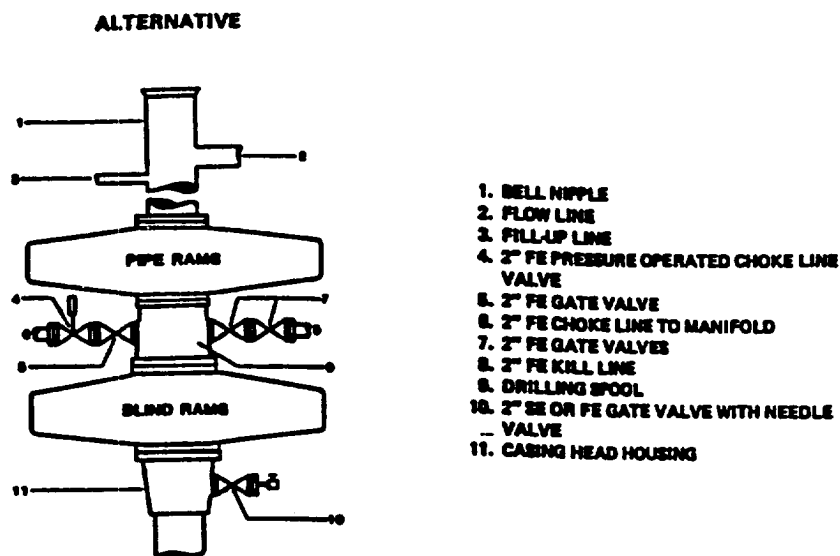
I hereby certify that the information contained herein is true and complete to the best of my knowledge and belief.

Signature
L. M. Sanders
Printed Name
L. M. Sanders
Position
Supv. Regulatory Affairs
Company
Phillips Petroleum Co.
Date
May 30, 1990

SURVEYOR CERTIFICATION

I hereby certify that the well location shown on this plat was plotted from field notes of actual surveys made by me or under my supervision, and that the same is true and correct to the best of my knowledge and belief.

Date Surveyed
MAY 30 1990
Signature & Seal of Professional Surveyor
R. Howard Daggett
Certificate No.
9679
Registered Professional
Land Surveyor



NOTE: THE DRILLING SPOOL MAY BE LOCATED BELOW BOTH SETS OF RAMS IF A DOUBLE PREVENTER IS USED AND IT DOES NOT HAVE SUITABLE OUTLETS BETWEEN RAMS

Figure 7-9. Standard Hydraulic Blowout Preventer Assembly
3 M Working Pressure Alternative 1

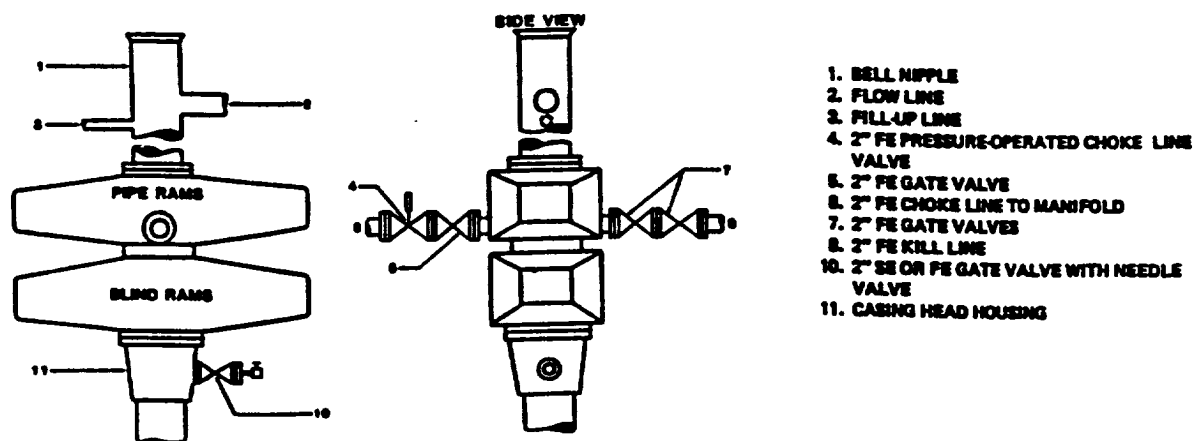


Figure 7-10. Standard Hydraulic Blowout Preventer Assembly
3 M Working Pressure Alternative 3 (without Drilling Spool)