

UNITED STATES
DEPARTMENT OF THE INTERIOR
BUREAU OF LAND MANAGEMENT

30-039-2541

APPLICATION FOR PERMIT TO DRILL, DEEPEN, OR PLUG BACK

1a. TYPE OF WORK

DRILL ☒

DEEPEN ☐

PLUG BACK ☐

b. TYPE OF WELL

OIL
WELL ☐

GAS
WELL ☒

OTHER

SINGLE
ZONE ☒

MULTIPLE
ZONE ☐

2. NAME OF OPERATOR

Phillips Petroleum Company 17654

3. ADDRESS OF OPERATOR

5525 Hwy. 64, NBU 3004, Farmington, NM 87401 (505) 599-3454

4. LOCATION OF WELL (Report location clearly and in accordance with any State requirements.)

At surface

Unit K, 2503' FSL & 1816' FWL

At proposed prod. zone

Same as above

14. DISTANCE IN MILES AND DIRECTION FROM NEAREST TOWN OR POST OFFICE*

@ 21 miles east of Blanco, NM

15. DISTANCE FROM PROPOSED*

LOCATION TO NEAREST

PROPERTY OR LEASE LINE, FT.

(Also to nearest drig. unit line, if any)

824'

16. NO. OF ACRES IN LEASE

2540.77

17. NO. OF ACRES ASSIGNED
TO THIS WELL

320 Acres w/2 of Section

18. DISTANCE FROM PROPOSED LOCATION*

TO NEAREST WELL, DRILLING, COMPLETED,
OR APPLIED FOR, ON THIS LEASE, FT.

1232' from #2A

19. PROPOSED DEPTH

3650'

20. ROTARY OR CABLE TOOLS

Rotary

21. ELEVATIONS (Show whether DF, RT, GR, etc.)

6732' (Unprepared GL)

22. APPROX. DATE WORK WILL START*

Upon Approval

23.

PROPOSED CASING AND CEMENTING PROGRAM

DRILLING OPERATIONS AUTHORIZED ARE
SUBJECT TO COMPLIANCE WITH ATTACHED
"GENERAL REQUIREMENTS"

SIZE OF HOLE	SIZE OF CASING	WEIGHT PER FOOT	SETTING DEPTH	
12-1/4"	9-5/8"	36#, J-55	250'	150 sx (177 cu ft) Class B
8-1/2"	7"	23#, K-55	3515'	Lead 500 sx (1055 cu ft) Class B
6-1/2"	5-1/2"	23#, P-110	3650'-3415'	Tail 150 sx (177 cu ft) Class B
				**

** If the coal is cleated a 5-1/2", 23#, P-110 liner will be run in the open hole without being cemented.

** If the coal is not cleated the well will be stimulated & completed open hole.

Justification of redrill - Similar to information submitted with the S.J. 31-6 #234R's APP.

Mud Program and BOP Equipment - See Attached.

RECEIVED
JUN - 6 1994

IN ABOVE SPACE DESCRIBE PROPOSED PROGRAM: If proposal is to deepen or plug back, give data on present productive zone and proposed new productive zone. If proposal is to drill or deepen directionally, give pertinent data on subsurface locations and measured and true vertical depths. Give blowout preventer program, if any.

24.

SIGNED Ed Hasely Ed Hasely TITLE Environmental/Regulatory Eng. DATE 4-29-94

(This space for Federal or State office use)

PERMIT NO. _____ APPROVAL DATE _____

APPROVED BY _____ TITLE _____

CONDITIONS OF APPROVAL, IF ANY:

APPROVED
AS AMENDED

MAY 31 1994

DISTRICT MANAGER

NMOCD

*See Instructions On Reverse Side

State of New Mexico
Energy, Minerals and Natural Resources Department

RECEIVED
Form C-102
Revised 1-1-89

Submit to Appropriate
District Office
Lease - 4 copies
Lease - 3 copies

OIL CONSERVATION DIVISION
P.O. Box 2088
Santa Fe, New Mexico 87504-2088

54 APR 22 PM 3:23

070 87504-2088

DISTRICT I
P.O. Box 1980, Hobbs, N.M. 88240

DISTRICT II
P.O. Drawer DD, Artesia, N.M. 88210

DISTRICT III
1000 Rio Brazos Rd., Aztec, N.M. 87410

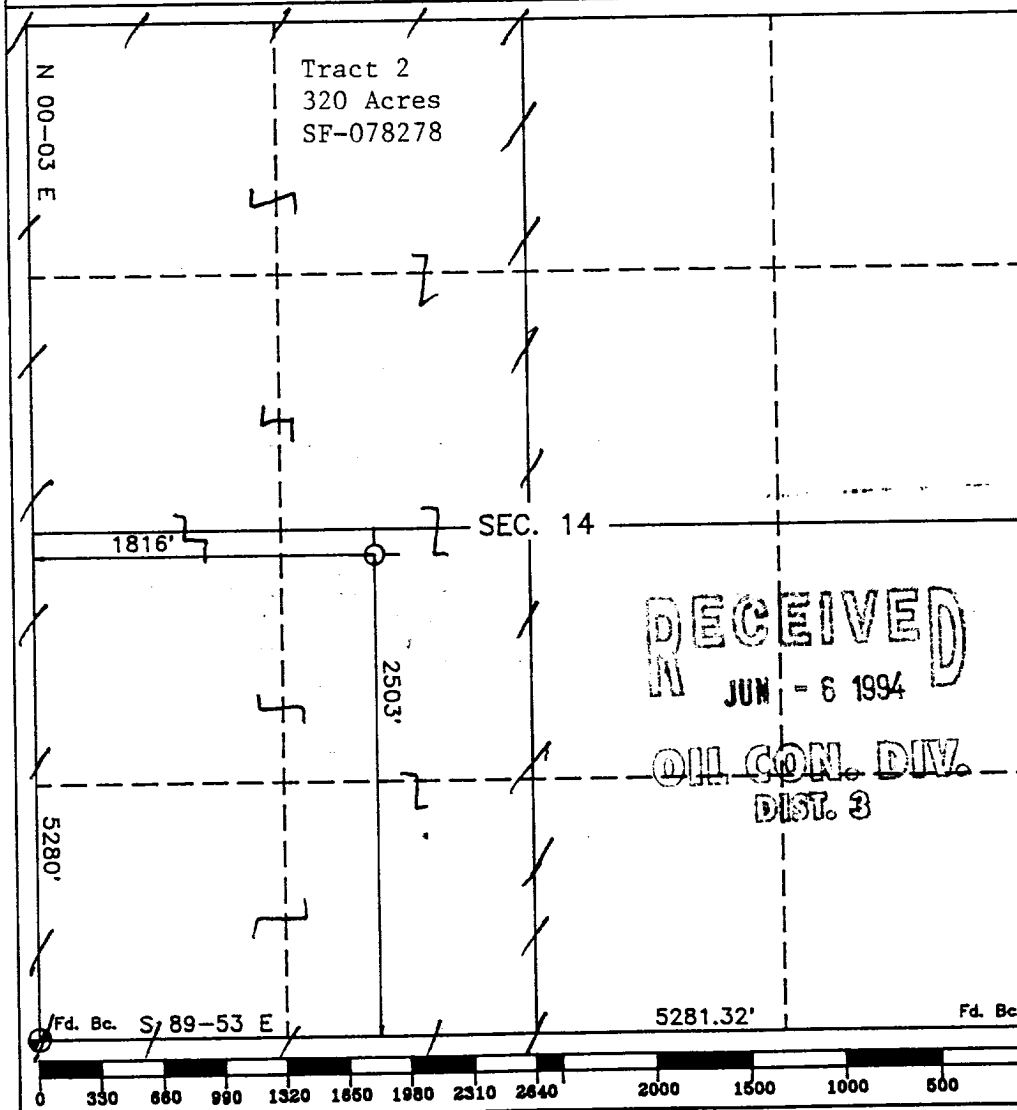
WELL LOCATION AND ACREAGE DEDICATION PLAT
All Distances must be from the outer boundaries of the section

Operator PHILLIPS PETROLEUM CO.			Lease SAN JUAN 29-6		Well No. 227R
Unit Letter K	Section 14	Township 29 NORTH	Range 6 WEST	County RIO ARriba	
Actual Footage Location of Well: 2503 feet from the SOUTH line and 1816 feet from the WEST line					
Ground level Elev. 6732	Producing Formation Fruitland Coal		Pool Basin Fruitland Coal	Dedicated Acreage: 320 Acres	

- Outline the acreage dedicated to the subject well by colored pencil or hatchure mark on the plat below.
- If more than one lease is dedicated to the well, outline each and identify the ownership thereof (both as to working interest and royalty).
- If more than one lease of different ownership is dedicated to the well, have the interest of all owners been consolidated by communitization, unitization, force-pooling, etc.?
☒ Yes ☐ No If answer is "yes" type of consolidation Unitization

If answer is "no" list the owners and tract descriptions which have actually been consolidated. (Use reverse side of this form if necessary.)

No allowable will be assigned to the well until all interests have been consolidated (by communitization, unitization, forced-pooling, or otherwise) or until a non-standard unit, eliminating such interest, has been approved by the Division.



SURVEYOR CERTIFICATION

I hereby certify that the information contained herein is true and complete to the best of my knowledge and belief.

Signature
Ed Hasely
Printed Name
Ed Hasely
Position
Environmental/Regulatory Eng.
Company
Phillips Petroleum Company
Date
April 27 1994

SURVEYOR CERTIFICATION

I hereby certify that the well location shown on this plat was plotted from field notes of actual surveys made by me or under my supervision, and that the same is true and correct to the best of my knowledge and belief.

Date Surveyed
MARCH 10 1994
Signature & Seal of Professional Surveyor
ROY A. RUSH
Certificate No. 8894