


UNITED STATES
DEPARTMENT OF THE INTERIOR
BUREAU OF LAND MANAGEMENT

APPLICATION FOR PERMIT TO DRILL, DEEPEN, OR PLUG BACK

1a. Type of Work DRILL	070 FARMINGTON, NM	5. Lease Number SF-079893A Unit Reporting Number
1b. Type of Well GAS		6. If Indian, All. or Tribe
2. Operator MERIDIAN OIL 14538		7. Unit Agreement Name
3. Address & Phone No. of Operator PO Box 4289, Farmington, NM 87499 (505) 326-9700	8. Farm or Lease Name 6861 Brown	9. Well Number 202
4. Location of Well 2095' FSL, 505' FWL Latitude 36° 42' 34", Longitude 107° 18' 01"	10. Field, Pool, Wildcat 77440 Gob. Pictured Cliffs	11. Sec., Twn, Rge, Mer. (NMPM) L Sec 19, T-29-N, R-4-W ✓ API # 30-039-25530 ✓
14. Distance in Miles from Nearest Town 7 miles to Gobernador	12. County ✓ Rio Arriba	13. State NM
15. Distance from Proposed Location to Nearest Property or Lease Line 505'		
16. Acres in Lease	17. Acres Assigned to Well 160 SW/4 159.56	
18. Distance from Proposed Location to Nearest Well, Drig, Compl, or Applied for on this Lease 4400'		
19. Proposed Depth 3680'	This action is subject to technical and procedural review pursuant to 43 CFR 3165.3 and appeal pursuant to 43 CFR 3165.4.	20. Rotary or Cable Tools Rotary
21. Elevations (DF, FT, GR, Etc.) 6533' GR		22. Approx. Date Work will Start 2nd quarter 1995
23. Proposed Casing and Cementing Program See Operations Plan attached		DRILLING OPERATIONS ARE SUBJECT TO THE "GENERAL CONDITIONS" ATTACHED
24. Authorized by:  Regional Drilling Engineer		4/26/95 Date

PERMIT NO. _____ APPROVAL DATE _____
APPROVED BY _____ TITLE _____ DATE _____

Archaeological Report to be submitted Arboles Archaeology
Threatened and Endangered Species Report submitted

NOTE: This format is issued in lieu of U.S. BLM Form 3160-3

NSL-3540 @

RECEIVED
JUN 16 1995
OIL CON. DIV.
NMOC

APPROVED
AS AMENDED

JUN 13 1995
DISTRICT MANAGER

District I
PO Box 1980, Hobbs, NM 88241-1980
District II
PO Drawer DD, Artesia, NM 88211-0719
District III
1000 Rio Brazos Rd., Aztec, NM 87410
District IV
PO Box 2088, Santa Fe, NM 87504-2088

State of New Mexico
Energy, Minerals & Natural Resources Department

OIL CONSERVATION DIVISION
PO Box 2088
Santa Fe, NM 87504-2088

Form C-102
Revised February 21, 1994
Instructions on back
Submit to Appropriate District Office
State Lease - 4 Copies
Fee Lease - 3 Copies

570 FARMINGTON, NM

☐ AMENDED REPORT

WELL LOCATION AND ACREAGE DEDICATION PLAT

API Number <u>30-039-25530</u>		Pool Code <u>77440</u>	Pool Name <u>Gobernador Pictured Cliffs</u>
Property Code <u>6861</u>	Property Name <u>Brown</u>		Well Number <u>202</u>
GRID No. <u>14538</u>	Operator Name <u>MERIDIAN OIL INC.</u>		Elevation <u>6533'</u>

¹⁰ Surface Location

UL or lot no. <u>L</u>	Section <u>19</u>	Township <u>29 N</u>	Range <u>4 W</u>	Lot Idn	Feet from the <u>2095</u>	North/South line <u>South</u>	Feet from the <u>505</u>	East/West line <u>West</u>	County <u>R.A.</u>
---------------------------	----------------------	-------------------------	---------------------	---------	------------------------------	----------------------------------	-----------------------------	-------------------------------	-----------------------

¹¹ Bottom Hole Location If Different From Surface

UL or lot no.	Section	Township	Range	Lot Idn	Feet from the	North/South line	Feet from the	East/West line	County
---------------	---------	----------	-------	---------	---------------	------------------	---------------	----------------	--------

¹² Dedicated Acres <u>160</u>	¹³ Joint or Infill	¹⁴ Consolidation Code	¹⁵ Order No.
---	-------------------------------	----------------------------------	-------------------------

NO ALLOWABLE WILL BE ASSIGNED TO THIS COMPLETION UNTIL ALL INTERESTS HAVE BEEN CONSOLIDATED
OR A NON-STANDARD UNIT HAS BEEN APPROVED BY THE DIVISION

16		5266.80'		17 OPERATOR CERTIFICATION	
1				I hereby certify that the information contained herein is true and complete to the best of my knowledge and belief	
2				Signature <u>Peggy Bradfield</u>	
				Printed Name <u>Peggy Bradfield</u>	
				Regulatory Affairs Title <u>1-25-95</u>	
				Date	
3		NMSF-079893A		18 SURVEYOR CERTIFICATION	
4				I hereby certify that the well location shown on this plat was plotted from field notes of actual surveys made by me or under my supervision, and that the same is true and correct to the best of my knowledge and belief	
505'		2095'		Date of Survey <u>8-16-94</u>	
5280.00'		5273.40'		Signature and Seal of Registered Professional Surveyor <u>6857</u>	
				Certificate Number	

April 25, 1995

OPERATIONS PLAN

Well Name: Brown #202
Location: 2095' FSL, 505' FWL Section 19, T-29-N, R-4-W
 Rio Arriba County, New Mexico
 Latitude 36° 42' 34", Longitude 107° 18' 01"
Formation: Gobernador Pictured Cliffs
Elevation: 6533' GL

Formation:	Top	Bottom	Contents
Surface	San Jose	2740'	
Ojo Alamo	2740'	2844'	aquifer
Kirtland	2844'	3206'	
Fruitland	3206'	3328'	
Fruitland Coal Top	3244'	3407'	gas
Pictured Cliffs	3328'		gas
Total Depth	3680'		

Logging Program: Mud logs from 2700' to Total Depth.
 CNL/hi res LDT/ML/GR/CAL to Total Depth.

Mud Program:

Interval	Type	Weight	Vis.	Fluid Loss
0- 200'	Spud	8.4-8.9	40-50	no control
200-3680'	Non-dispersed	8.4-9.5	30-60	no control

Casing Program:

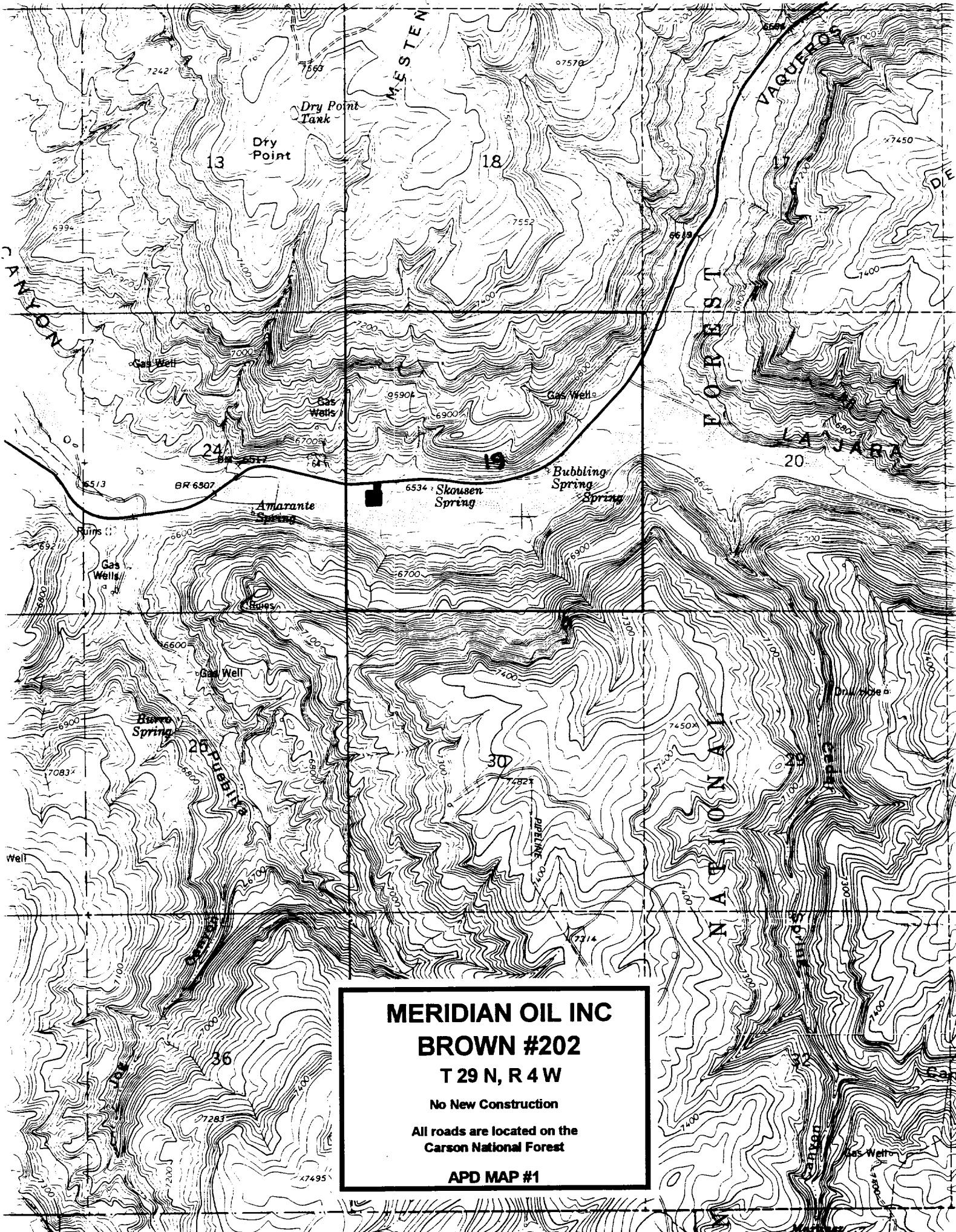
Hole Size	Depth Interval	Csg. Size	Wt.	Grade
12 1/4"	0 - 200'	8 5/8"	24.0#	K-55
7 7/8"	0 - 3680'	4 1/2"	10.5#	K-55

Tubing Program: - 2 3/8", 4.7#, J-55 EUE 8rd tbg landed @ 3680'

Float Equipment: 8 5/8" surface casing - saw tooth guide shoe.
 Centralizers will be run in accordance with Onshore Order #2.

4 1/2" production casing - float shoe on bottom. Three centralizers run every other joint above shoe. Four centralizers run every 3rd joint to the base of the Ojo Alamo @ 2844'. Two turbolizing type centralizers - one below and one into the base of the Ojo Alamo @ 2844'. Standard centralizers thereafter every fourth joint up to the base of the surface pipe.

Wellhead Equipment: 8 5/8" x 4 1/2" x 2 3/8" x 11" 2000 psi xmas tree assembly.



MERIDIAN OIL INC
BROWN #202
T 29 N, R 4 W
No New Construction
All roads are located on the
Carson National Forest
APD MAP #1