

District I
 PO Box 1980, Hobbs, NM 88241-1980
 District II
 811 South First, Artesia, NM 88210
 District III
 1000 Rio Brazos Rd., Aztec, NM 87410
 District IV
 2040 South Pacheco, Santa Fe, NM 87505

State of New Mexico
 Energy, Minerals & Natural Resources Department

OIL CONSERVATION DIVISION
 2040 South Pacheco
 Santa Fe, NM 87505

Form C-101
 Revised October 18, 1994
 Instructions on back
 Submit to Appropriate District Office
 State Lease - 6 Copies
 Fee Lease - 5 Copies

AMENDED REPORT

APPLICATION FOR PERMIT TO DRILL, RE-ENTER, DEEPEN, PLUGBACK, OR ADD A ZONE

¹ Operator Name and Address. Burlington Resources Oil & Gas Company PO Box 4289, Farmington, NM 87499		² OGRID Number 14538
⁴ Property Code 7465		³ API Number 30 - 039- <i>26074</i>
⁵ Property Name San Juan 29-7 Unit		⁶ Well No. 47C

RECEIVED
 JAN 19 1999
 OIL CON. DIV.
 DIST. 3

⁷ Surface Location

UL or lot no.	Section	Township	Range	Lot Idn	Feet from the	North/South line	Feet from the	East/West line	County
A	2	29N	7W		345'	North	490'	East	Rio Arriba

⁸ Proposed Bottom Hole Location If Different From Surface

UL or lot no.	Section	Township	Range	Lot Idn	Feet from the	North/South line	Feet from the	East/West line	County

⁹ Proposed Pool 1 Blanco Mesaverde	¹⁰ Proposed Pool 2
--	-------------------------------

¹¹ Work Type Code N	¹² Well Type Code G	¹³ Cable/Rotary Rotary	¹⁴ Lease Type Code State	¹⁵ Ground Level Elevation 6823' GR
¹⁶ Multiple N	¹⁷ Proposed Depth 6300'	¹⁸ Formation Mesaverde	¹⁹ Contractor N/a	²⁰ Spud Date N/a

²¹ Proposed Casing and Cement Program

Hole Size	Casing Size	Casing weight/foot	Setting Depth	Sacks of Cement	Estimated TOC
12 1/4"	9 5/8"	32.3#	320'	301 cu ft	Surface
8 3/4"	7"	20#	2950'	887 cu ft	Surface
6 1/4"	4 1/2"	10.5#	2850-6300'	531 cu ft	Surface

²² Describe the proposed program. If this application is to DEEPEN or PLUG BACK give the data on the present productive zone and proposed new productive zone. Describe the blowout prevention program, if any. Use additional sheets if necessary.

11" 2000 psi minimum double gate BOP

²³ I hereby certify that the information given above is true and complete to the best of my knowledge and belief.

Signature: *Peggy Bradfield*
 Printed name: Peggy Bradfield
 Title: Regulatory/Compliance Administrator
 Date: 1-18-99 Phone: 505-326-9700

OIL CONSERVATION DIVISION
 Approved by: *Ernie Bunch* 1-21-99
 Title: DEPUTY OIL & GAS INSPECTOR, DIST. 3
 Approval Date: JAN 21 1999 Expiration Date: JAN 21 2000
 Conditions of Approval : Attached **HOLD C104 FOR 1156**

District I
PO Box 1980, Hobbs, NM 88241-1980

State of New Mexico
Energy, Minerals & Natural Resources Department

Form C-102
Revised February 21, 1994

District II
PO Drawer DD, Artesia, NM 88211-0719

Instructions on back
Submit to Appropriate District Office
State Lease - 4 Copies
Fee Lease - 3 Copies

District III
1000 Rio Brazos Rd., Aztec, NM 87410

OIL CONSERVATION DIVISION
PO Box 2088
Santa Fe, NM 87504-2088

AMENDED REPORT

District IV
PO Box 2088, Santa Fe, NM 87504-2088

WELL LOCATION AND ACREAGE DEDICATION PLAT

*API Number 30-039-26074		*Pool Code 72319	*Pool Name Blanco Mesaverde
*Property Code 7465	*Property Name SAN JUAN 29-7 UNIT		*Well Number 47C
*GRID No. 14538	*Operator Name BURLINGTON RESOURCES OIL & GAS COMPANY		*Elevation 6823'

10 Surface Location

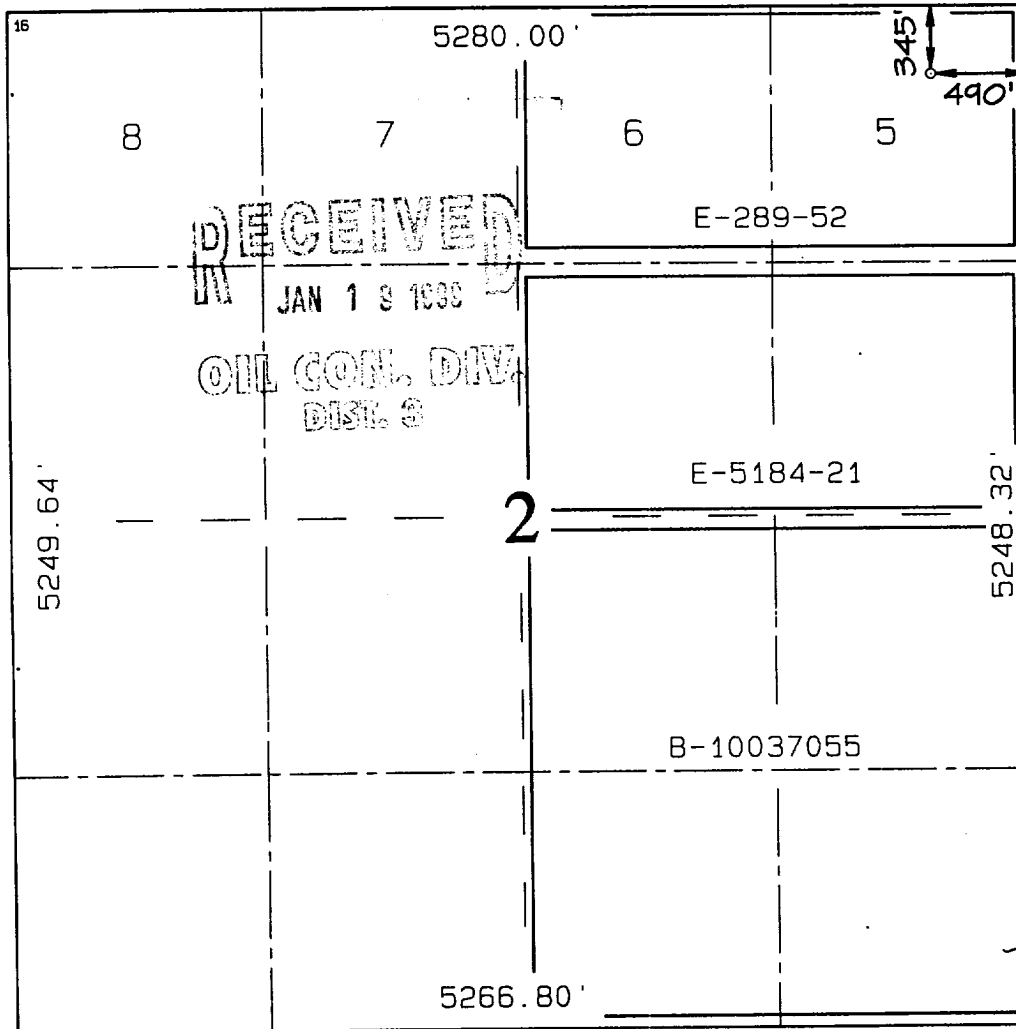
UL or lot no.	Section	Township	Range	Lot Idn	Feet from the	North/South line	Feet from the	East/West line	County
A	2	29N	7W		345	NORTH	490	EAST	RIO ARRIBA

11 Bottom Hole Location If Different From Surface

UL or lot no.	Section	Township	Range	Lot Idn	Feet from the	North/South line	Feet from the	East/West line	County

¹² Dedicated Acres E/318.14	¹³ Joint or Infill	¹⁴ Consolidation Code	¹⁵ Order No.
---	-------------------------------	----------------------------------	-------------------------

NO ALLOWABLE WILL BE ASSIGNED TO THIS COMPLETION UNTIL ALL INTERESTS HAVE BEEN CONSOLIDATED OR A NON-STANDARD UNIT HAS BEEN APPROVED BY THE DIVISION



17 OPERATOR CERTIFICATION
I hereby certify that the information contained herein is true and complete to the best of my knowledge and belief

Peggy Bradfield
Signature
Peggy Bradfield
Printed Name
Regulatory Administrator
Title
1-18-99
Date

18 SURVEYOR CERTIFICATION
I hereby certify that the well location shown on this plat was plotted from field notes of actual surveys made by me or under my supervision, and that the same is true and correct to the best of my belief.

DECEMBER 3, 1998
Date of Survey

Signature and Seal of Professional Surveyor
Neale C. Edwards
NEALE C. EDWARDS
NEW MEXICO
6857
Certificate No. 6857
Professional Surveyor