

UNITED STATES  
DEPARTMENT OF THE INTERIOR  
BUREAU OF LAND MANAGEMENT

## APPLICATION FOR PERMIT TO DRILL OR DEEPEN

## 1a. TYPE OF WORK

DRILL ☒DEEPEN ☐

## b. TYPE OF WELL

OIL  
WELL ☐GAS  
WELL ☒

OTHER

SINGLE  
ZONE ☐MULTIPLE  
ZONE ☒

## 2. NAME OF OPERATOR

Phillips Petroleum Company

## 3. ADDRESS AND TELEPHONE NO.

5525 Highway 64, NBU 3004, Farmington, NM 87401

505-599-3454

## 4. LOCATION OF WELL (Report location clearly and in accordance with any State requirements.)

At surface

Unit E, 1652' FNL &amp; 455' FWL

At proposed prod. zone

Same as above

## 14. DISTANCE IN MILES AND DIRECTION FROM NEAREST TOWN OR POST OFFICE

21.5 miles east of Blanco, NM

## 15. DISTANCE FROM PROPOSED\*

LOCATION TO NEAREST

PROPERTY OR LEASE LINE, FT.

(Also to nearest drlg. unit line, if any)

455'

## 18. DISTANCE FROM PROPOSED LOCATION\*

TO NEAREST WELL, DRILLING, COMPLETED,

OR APPLIED FOR, ON THIS LEASE, FT.

1200' from 29-6 #27A

## 21. ELEVATIONS (Show whether DF, RT, GR, etc.)

6449' unprepared ground level

This action is subject to technical and  
procedural review pursuant to 43 CFR  
and appeal pursuant to 40 CFR 8165.4.

## 22. APPROX. DATE WORK WILL START\*

3165.3 1st Qtr 2000

## 23. PROPOSED CASING AND CEMENTING PROGRAM

SIZE OF HOLE	GRADE SIZE OF CASING	WEIGHT PER FOOT	SETTING DEPTH	QUANTITY OF CEMENT
12-1/4"	9-5/8"	36#, J/K-55	320' *	159 sx (141 yield = 222 cf) Type III
8-3/4"	7"	20#, J/K-55	3930'	L-344 sx(2.9 yield = 998cf)Type III
				T-100 sx(1.41 yield = 141cf)Type III
6-1/4"	4-1/2"	11.6#, I-80	7866'	247sx (2.13 yield = 527 cf) CI H **

\* The surface casing will be set at a minimum of 320', but could be set deeper if required to maintain hole stability.

\*\* The cement for the 4-1/2" casing is designed to cover the open hole section to 100' above the Cliffhouse Sandstone. Circulation/squeeze cementing will be conducted to isolate the Lewis Shale interval prior to its completion (see attached drilling prognosis for more details on this and mud program).

See attached for details on BOP equipment and Cathodic Protection.

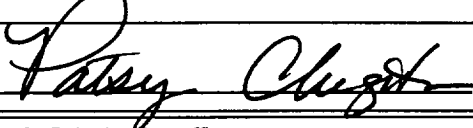
DRILLING OPERATIONS AUTHORIZED ARE  
SUBJECT TO COMPLIANCE WITH ATTACHED  
"GENERAL REQUIREMENTS"

The gas pipeline qualifies for the APD/ROW process (see WFS pipeline plat attached).

IN ABOVE SPACE DESCRIBE PROPOSED PROGRAM: If proposal is to deepen, give data on present productive zone and proposed new productive zone. If proposal is to drill or deepen directionally, give pertinent data on subsurface locations and measured and true vertical depths. Give blowout preventer program, if any.

24.

SIGNED



TITLE Sr. Regulatory/Proration Clerk

DATE 1/31/00

(This space for Federal or State office use)

PERMIT NO.

APPROVAL DATE

Application approval does not warrant or certify that the applicant holds legal or equitable title to those rights in the subject lease which would entitle the applicant to conduct operations thereon.

CONDITIONS OF APPROVAL, IF ANY:

ahsc

/s/ Charlie Beecham

Team Lead, Petroleum Management

FEB 28 2000

APPROVED BY

TITLE

DATE

\*See Instructions On Reverse Side

Title 18 U.S.C. Section 1001, makes it a crime for any person knowingly and willfully to make to any department or agency of the United States any false, fictitious or fraudulent statements or representations as to any matter within its jurisdiction.

NMOCD

District I  
 PO Box 1980, Hobbs, NM 88241-1980  
 District II  
 811 South First, Artesia, NM 88210  
 District III  
 1000 Rio Brazos Rd., Aztec, NM 87410  
 District IV  
 2040 South Pacheco, Santa Fe, NM 87505

State of New Mexico  
 Energy, Minerals & Natural Resources Department

**OIL CONSERVATION DIVISION**  
 2040 South Pacheco  
 Santa Fe, NM 87505

Form C-102  
 Revised October 18, 1994

Instructions on back  
 Submit to Appropriate District Office  
 State Lease - 4 Copies  
 Fee Lease - 3 Copies

☐ AMENDED REPORT

**WELL LOCATION AND ACREAGE DEDICATION PLAT**

1 API Number <b>30-039-26341</b>		2 Pool Code <b>71599</b>	3 Pool Name <b>Basin Dakota</b>
4 Property Code <b>009257</b>	5 Property Name <b>SAN JUAN 29-6 UNIT</b>		6 Well Number <b>76M</b>
7 OGRID No. <b>017654</b>	8 Operator Name <b>PHILLIPS PETROLEUM COMPANY</b>		9 Elevation <b>6449'</b>

**10 Surface Location**

UL or lot no. <b>E</b>	Section <b>23</b>	Township <b>29N</b>	Range <b>6W</b>	Lot Idn	Feet from the <b>1652'</b>	North/South line <b>NORTH</b>	Feet from the <b>455'</b>	East/West line <b>WEST</b>	County <b>RIO ARriba</b>
---------------------------	----------------------	------------------------	--------------------	---------	-------------------------------	----------------------------------	------------------------------	-------------------------------	-----------------------------

**11 Bottom Hole Location If Different From Surface**

UL or lot no. <b>E</b>	Section	Township	Range	Lot Idn	Feet from the	North/South line	Feet from the	East/West line	County
---------------------------	---------	----------	-------	---------	---------------	------------------	---------------	----------------	--------

12 Dedicated Acres <b>320 W/2</b>	13 Joint or Infill <b>I</b>	14 Consolidation Code <b>U</b>	15 Order No.
--------------------------------------	--------------------------------	-----------------------------------	--------------

NO ALLOWABLE WILL BE ASSIGNED TO THIS COMPLETION UNTIL ALL INTERESTS HAVE BEEN CONSOLIDATED OR A NON-STANDARD UNIT HAS BEEN APPROVED BY THE DIVISION

	<b>17 OPERATOR CERTIFICATION</b> I hereby certify that the information contained herein is true and complete to the best of my knowledge and belief  <i>Patsy Clugston</i> Signature <b>Patsy Clugston</b> Printed Name <b>SR. Regulatory Clerk</b> Title <b>January 20, 2000</b> Date	
	<b>18 SURVEYOR CERTIFICATION</b> I hereby certify that the well location shown on this plat was plotted from field notes of actual surveys made by me or under my supervision, and that the same is true and correct to the best of my belief.  <b>11/30/99</b> Date of Survey Signature and Seal of Professional Surveyor: 	
	Certificate Number	

District I  
140 Box 1980, Hobbs, NM 88241-1980  
District II  
811 South First, Artesia, NM 88210  
District III  
1000 Rio Brazos Rd., Aztec, NM 87410  
District IV  
2040 South Pacheco, Santa Fe, NM 87505

State of New Mexico  
Energy, Minerals & Natural Resources Department

OIL CONSERVATION DIVISION  
2040 South Pacheco  
Santa Fe, NM 87505

Form C-102  
Revised October 18, 1994  
Instructions on back  
Submit to Appropriate District Office  
State Lease - 4 Copies  
Fee Lease - 3 Copies

☐ AMENDED REPORT

WELL LOCATION AND ACREAGE DEDICATION PLAT

1 API Number <b>30-039-06341</b>		1 Pool Code <b>72319</b>		1 Pool Name <b>Blanco Mesaverde</b>	
4 Property Code <b>009257</b>		4 Property Name <b>SAN JUAN 29-6 UNIT</b>			4 Well Number <b>76M</b>
1 OGRID No. <b>017654</b>		1 Operator Name <b>PHILLIPS PETROLEUM COMPANY</b>			1 Elevation <b>6449'</b>

10 Surface Location

UL or lot no. <b>E</b>	Section <b>23</b>	Township <b>29N</b>	Range <b>6W</b>	Lot Idn	Feet from the <b>1652'</b>	North/South line <b>NORTH</b>	Feet from the <b>455'</b>	East/West line <b>WEST</b>	County <b>RIO ARRIBA</b>
---------------------------	----------------------	------------------------	--------------------	---------	-------------------------------	----------------------------------	------------------------------	-------------------------------	-----------------------------

11 Bottom Hole Location If Different From Surface

UL or lot no. <b>E</b>	Section	Township	Range	Lot Idn	Feet from the	North/South line	Feet from the	East/West line	County
---------------------------	---------	----------	-------	---------	---------------	------------------	---------------	----------------	--------

12 Dedicated Acres <b>320 W/2</b>	13 Joint or Infill <b>I</b>	14 Consolidation Code <b>U</b>	15 Order No.
--------------------------------------	--------------------------------	-----------------------------------	--------------

NO ALLOWABLE WILL BE ASSIGNED TO THIS COMPLETION UNTIL ALL INTERESTS HAVE BEEN CONSOLIDATED OR A NON-STANDARD UNIT HAS BEEN APPROVED BY THE DIVISION

<p>16</p> <p>S89°53'E 5281.32'</p> <p>1652'</p> <p>SF-078284 1273.24 acres</p> <p>455'</p> <p>5280.00'</p> <p>Section 23</p> <p>N00°03'E</p> <p>S89°50'E 5277.36'</p>		<p>17 OPERATOR CERTIFICATION</p> <p>I hereby certify that the information contained herein is true and complete to the best of my knowledge and belief</p> <p><i>Patsy Clugston</i></p> <p>Signature <b>Patsy Clugston</b></p> <p>Printed Name <b>Sr. Regulatory Clerk</b></p> <p>Title <b>January 20, 2000</b></p> <p>Date</p>	
		<p>18 SURVEYOR CERTIFICATION</p> <p>I hereby certify that the well location shown on this plat was plotted from field notes of actual surveys made by me or under my supervision, and that the same is true and correct to the best of my belief.</p> <p><b>11/30/99</b></p> <p>Date of Survey</p> <p>Signature and Seal of Professional Surveyor:</p> <p><i>Anthony P. Broadhurst</i></p> <p>Certificate Number</p>	



# PHILLIPS PETROLEUM COMPANY

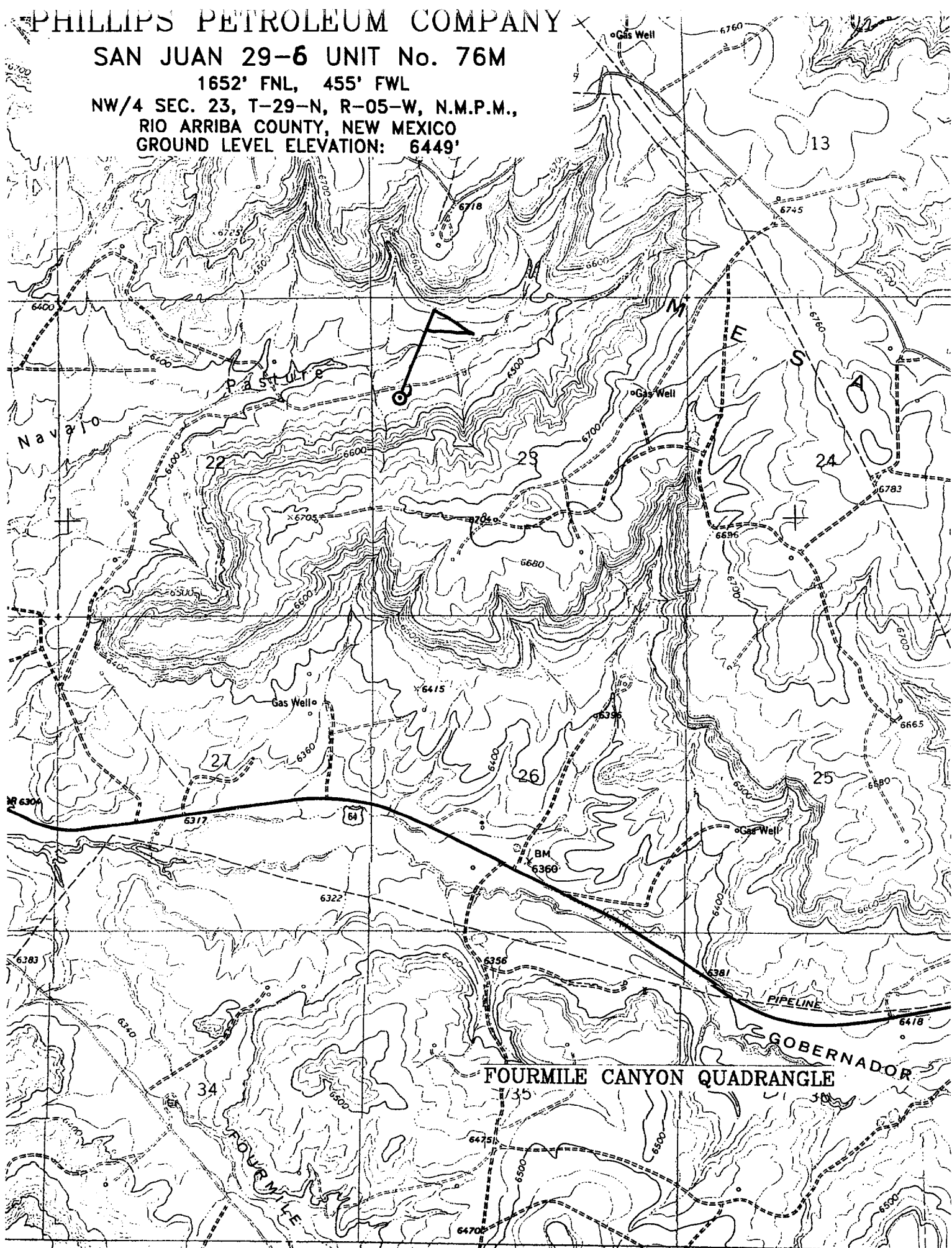
## SAN JUAN 29-6 UNIT No. 76M

1652' FNL, 455' FWL

NW/4 SEC. 23, T-29-N, R-05-W, N.M.P.M.,

RIO ARriba COUNTY, NEW MEXICO

GROUND LEVEL ELEVATION: 6449'



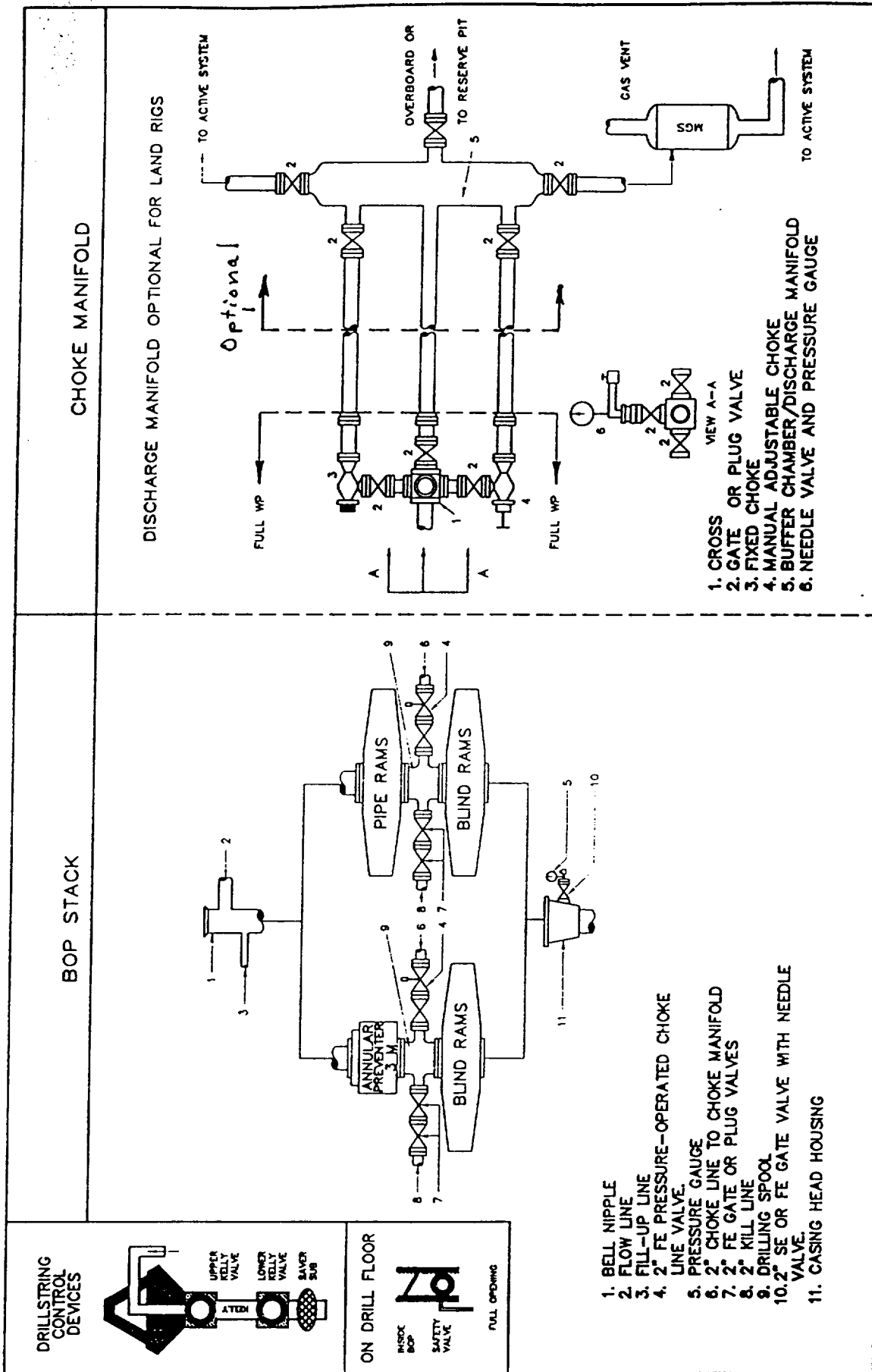


Fig. 2.4. Class 2 BOP and Choking Manifold.