

UNITED STATES
DEPARTMENT OF THE INTERIOR
BUREAU OF LAND MANAGEMENT

SUBMIT IN TRIPLICATE*

(See instructions on reverse side)

FORM APPROVED
OMB NO. 1004-0136
Expires: February 28, 1995

APPLICATION FOR PERMIT TO DRILL OR DEEPEN

1a. TYPE OF WORK

DRILL ☒

DEEPEEN ☐

b. TYPE OF WELL

OIL WELL ☐

GAS WELL ☒

OTHER ☐

SINGLE ZONE ☐

MULTIPLE ZONE ☒

2. NAME OF OPERATOR

Phillips Petroleum Company

3. ADDRESS AND TELEPHONE NO.

5525 Highway 64, NBU 3004, Farmington, NM 87401

505-599-3454

4. LOCATION OF WELL (Report location clearly and in accordance with any State requirements.)*

At surface

Unit P, 10' FSL & 585' FEL

At proposed prod. zone

Same as above

This action is subject to technical and procedural review pursuant to 43 CFR 3165.3 and appeal pursuant to 43 CFR 3165.4.

14. DISTANCE IN MILES AND DIRECTION FROM NEAREST TOWN OR POST OFFICE*

21.5 miles from Blanco, NM

15. DISTANCE FROM PROPOSED*

LOCATION TO NEAREST

PROPERTY OR LEASE LINE, FT.

(Also to nearest drlg. unit line, if any)

10'

16. NO. OF ACRES IN LEASE

400 acres

17. NO. OF ACRES ASSIGNED

TO THIS WELL

320 DK & MV E/2

18. DISTANCE FROM PROPOSED LOCATION*

TO NEAREST WELL, DRILLING, COMPLETED, OR APPLIED FOR, ON THIS LEASE, FT.

19. PROPOSED DEPTH

7819' ✓

20. ROTARY OR CABLE TOOLS

Rotary

21. ELEVATIONS (Show whether DF, RT, GR, etc.)

6422' (unprepared groundlevel)

22. APPROX. DATE WORK WILL START*

3rd Qtr 2000

23. PROPOSED CASING AND CEMENTING PROGRAM

SIZE OF HOLE	GRADE SIZE OF CASING	WEIGHT PER FOOT	SETTING DEPTH	QUANTITY OF CEMENT
12-1/4"	9-5/8" ✓	36#, J/K-55	320' *	158.5 sx Type III(1.41 yield=223 cf)
8-3/4"	7" ✓	20#, J/K-55	3764'	L-451.6sxType III(2.37 yield=1070cf)
				T-50.0 sx Type III(1.4 yield =70 cf)
6-1/4"	4-1/2"	11.6#, I-80	7819' ✓	318.8sx C1 H (2.13 yield = 679 cf)**

* The surface casing will be set at a minimum of 320', but could be deeper if required to maintain hole stability.

** The production casing cement is calculated to cover the openhole interval with 60% excess and annular volume 100' within intermediate shoe. Depending on hole conditions, the well may be cemented in a single stage or two staged.

See the attached for details on the BOP equipment and Cathodic Protection.

The pipeline for this well qualifies for APD/ROW process. See attached WFS plat and details in the Surface Use Plan.

DRILLING OPERATIONS AUTHORIZED ARE
SUBJECT TO COMPLIANCE WITH ATTACHED
"GENERAL REQUIREMENTS"

IN ABOVE SPACE DESCRIBE PROPOSED PROGRAM: If proposal is to deepen, give data on present productive zone and proposed new productive zone. If proposal is to drill or deepen directionally, give pertinent data on subsurface locations and measured and true vertical depths. Give blowout preventer program, if any.

24.

SIGNED

Monica D. Rodahl

TITLE Regulatory Assistant

DATE 03/16/00

(This space for Federal or State office use)

PERMIT NO.

APPROVAL DATE

Application approval does not warrant or certify that the applicant holds legal or equitable title to those rights in the subject lease which would entitle the applicant to conduct operations thereon.

CONDITIONS OF APPROVAL, IF ANY:

HOLD C104 FOR Basin, Dakota NSL

APR 26 2000

APPROVED BY

/s/ Charlie Beecham

TITLE

DATE

*See Instructions On Reverse Side

Title 18 U.S.C. Section 1001, makes it a crime for any person knowingly and willfully to make to any department or agency of the United States any false, fictitious or fraudulent statements or representations as to any matter within its jurisdiction.

NMOCD

District I
147 Box 1980, Hobbs, NM 88241-1980
District II
811 South First, Artesia, NM 88210
District III
1000 Rio Brazos Rd., Aztec, NM 87410
District IV
2040 South Pacheco, Santa Fe, NM 87505

State of New Mexico
Energy, Minerals & Natural Resources Department

OIL CONSERVATION DIVISION
2040 South Pacheco
Santa Fe, NM 87505

Form C-1
Revised October 18, 1990
Instructions on back
Submit to Appropriate District Office
State Lease - 4 Copies
Fee Lease - 3 Copies

☐ AMENDED REPORT

WELL LOCATION AND ACREAGE DEDICATION PLAT

APL Number 30-039-26409		Pool Code 72319	Pool Name Blanco Mesaverde
Property Code 009257	Property Name SAN JUAN 29-6 UNIT		Well Number 77M
OGRID No. 017654	Operator Name PHILLIPS PETROLEUM COMPANY		Elevation 6422'

10 Surface Location

UL or lot no.	Section	Township	Range	Lot Idn	Feet from the	North/South line	Feet from the	East/West line	County
P	22	29N	6W		10'	SOUTH	585'	EAST	RIO ARriba

11 Bottom Hole Location If Different From Surface

UL or lot no.	Section	Township	Range	Lot Idn	Feet from the	North/South line	Feet from the	East/West line	County
P									

12 Dedicated Acres **320 E/2** Joint or Infill **I** Consolidation Code **U** Order No.

NO ALLOWABLE WILL BE ASSIGNED TO THIS COMPLETION UNTIL ALL INTERESTS HAVE BEEN CONSOLIDATED OR A NON-STANDARD UNIT HAS BEEN APPROVED BY THE DIVISION

16 5280.00' N00°02'E	S89°59'E 5266.80'	NM-05220 Bm Btc 344	17 OPERATOR CERTIFICATION I hereby certify that the information contained herein is true and complete to the best of my knowledge and belief Signature <u>Patsy Clugston</u> Printed Name <u>Patsy Clugston</u> Title <u>Sr. Regulatory Clerk</u> Date <u>January 20, 2000</u>	
	Section 22	7		5280.00'
	SF-080180 400 acres	5266.80'		585'
S89°58'E			18 SURVEYOR CERTIFICATION I hereby certify that the well location shown on this plat was plotted from field notes of actual surveys made by me or under my supervision, and that the same is true and correct to the best of my belief. Date of Survey <u>12/07/99</u> Signature and Seal of Professional Surveyer: HENRY P. BROADHURST, JR. NEW MEXICO REGISTERED PROFESSIONAL SURVEYOR	

District I
141 Box 1980, Hobbs, NM 88241-1980
District II
311 South First, Artesia, NM 88210
District III
1000 Rio Brazos Rd., Aztec, NM 87410
District IV
2040 South Pacheco, Santa Fe, NM 87505

State of New Mexico
Energy, Minerals & Natural Resources Department

OIL CONSERVATION DIVISION
2040 South Pacheco
Santa Fe, NM 87505

Form C-1
Revised October 18, 19
Instructions on ba
Submit to Appropriate District Offi
State Lease - 4 Cop
Fee Lease - 3 Cop
☐ AMENDED REPOI

WELL LOCATION AND ACREAGE DEDICATION PLAT

1. Well Number 30-039-26 409		2. Pool Code 71599	3. Pool Name Basin Dakota
4. Property Code 009257	5. Property Name SAN JUAN 29-6 UNIT		6. Well Number 77M
7. OGRID No. 017654	8. Operator Name PHILLIPS PETROLEUM COMPANY		9. Elevation 6422'

10 Surface Location

UL or lot no.	Section	Township	Range	Lot Idn	Feet from the	North/South line	Feet from the	East/West line	County
P	22	29N	6W		10'	SOUTH	585'	EAST	RIO ARRI

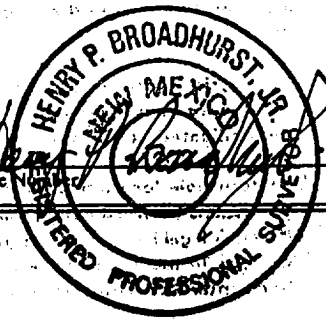
11 Bottom Hole Location If Different From Surface

UL or lot no.	Section	Township	Range	Lot Idn	Feet from the	North/South line	Feet from the	East/West line	County
P									

12. Dedicated Acres 320 E/2	13. Joint or Infill I	14. Consolidation Code U	15. Order No.
--------------------------------	--------------------------	-----------------------------	---------------

NO ALLOWABLE WILL BE ASSIGNED TO THIS COMPLETION UNTIL ALL INTERESTS HAVE BEEN CONSOLIDATED OR
NON-STANDARD UNIT HAS BEEN APPROVED BY THE DIVISION

16	S89°59'E	5266.80'	NM-05220	17. OPERATOR CERTIFICATION I hereby certify that the information contained herein is true and complete to the best of my knowledge and belief. Signature Patsy Clugston Printed Name Sr. Regulatory Clerk Title January 20, 2000 Date
5280.00'				
		Section 22		18. SURVEYOR CERTIFICATION I hereby certify that the well location shown on this plat was plotted from field notes of actual surveys made by me or under my supervision, and that the same is true and correct to the best of my belief. Date of Survey 12/07/99 Signature and Seal of Professional Surveyer: Certificate Number 1077M 585'
N00°02'E				
		SF-080180 400 acres		
	S89°58'E	5266.80'		



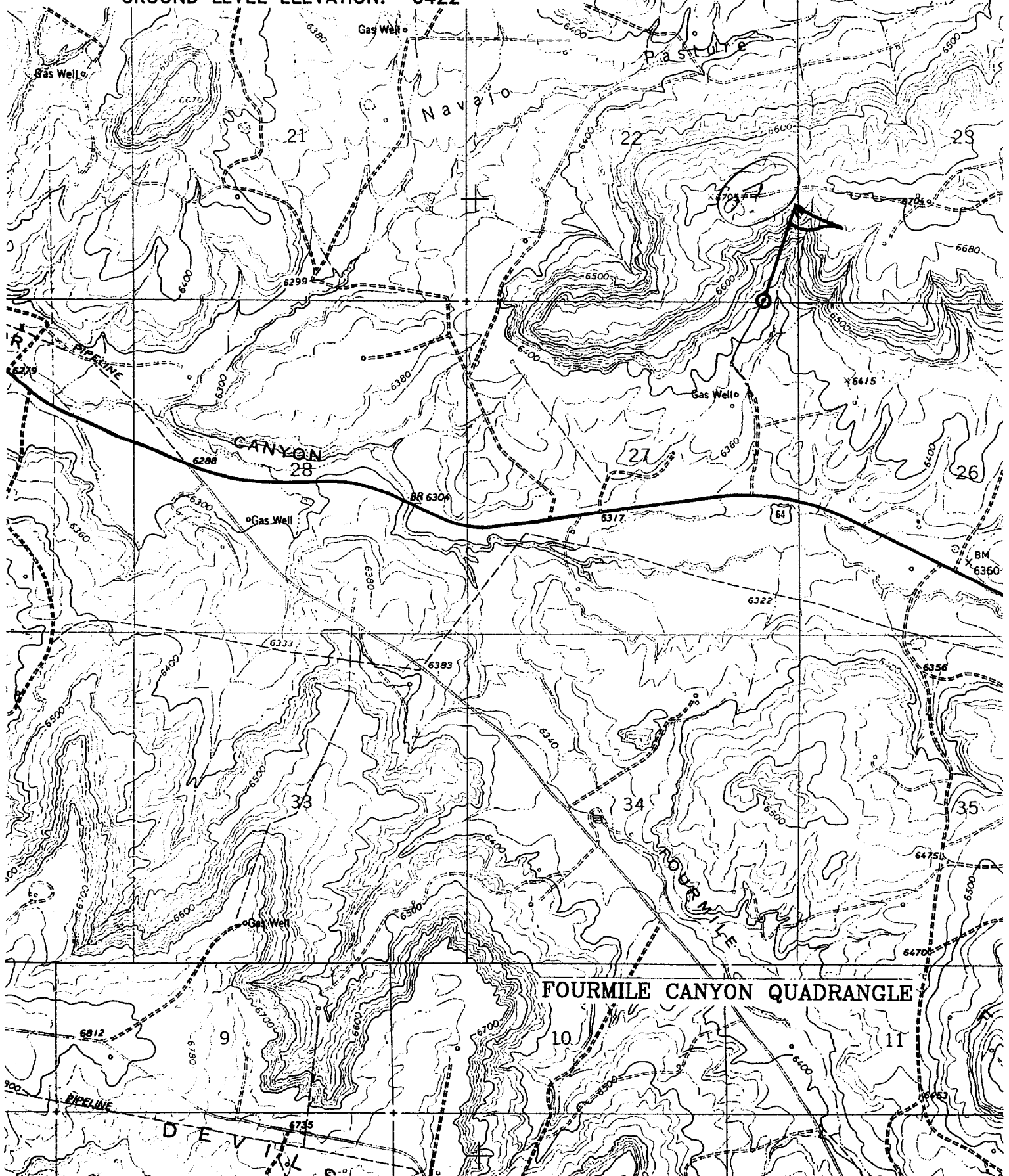
SAN JUAN 29-6 UNIT No. 77M

10' FSL, 585' FEL

SE/4 SEC. 22, T-29-N, R-06-W, N.M.P.M.,

RIO ARriba COUNTY, NEW MEXICO

GROUND LEVEL ELEVATION: 6422'



BOP AND RELATED EQUIPMENT CHECK LIST

3M SYSTEM:

2 hydr. rams (pipe & blind) or hydr. ram and annular with blind ram on bottom

Kill Line (2-inch minimum)

1 kill line valve (2-inch minimum)

1 choke line valve

2 chokes (refer to diagram in attachment 1) on choke manifold

Upper kelly cock valve in open position with handle available

Safety valve (in open position) and subs to fit all drill strings in use (with handle available)

Pressure gauged on choke manifold

2 inch minimum choke line

Fill-up line above the uppermost preventer

The BOPs will be pressure tested according to Onshore Order #2 III, A 1 and 30% safety factor.