

UNITED STATES  
DEPARTMENT OF THE INTERIOR  
BUREAU OF LAND MANAGEMENTSUBMIT IN TRIPLICATE\*  
(Other instructions on  
reverse side)FORM APPROVED  
OMB NO. 1004-0136  
Expires: February 28, 1995

## APPLICATION FOR PERMIT TO DRILL OR DEEPEN

## 1a. TYPE OF WORK

DRILL ☒DEEPEN ☐

## b. TYPE OF WELL

OIL ☐GAS ☒

OTHER

SINGLE ☐MULTIPLE ☒

## 2. NAME OF OPERATOR

Phillips Petroleum Company

## 3. ADDRESS AND TELEPHONE NO.

5525 Highway 64, NBU 3004, Farmington, NM 87401

## 4. LOCATION OF WELL (Report location clearly and in accordance with any State requirements)

At surface

Unit P, 215' FSL &amp; 820' FEL

At proposed prod. zone

Same as above

## 14. DISTANCE IN MILES AND DIRECTION FROM NEAREST TOWN OR POST OFFICE\*

22 miles east of Blanco, NM

## 15. DISTANCE FROM PROPOSED\*

LOCATION TO NEAREST

PROPERTY OR LEASE LINE, FT.

(Also to nearest drlg. unit line, if any)

215'

## 18. DISTANCE FROM PROPOSED LOCATION\*

TO NEAREST WELL, DRILLING, COMPLETED,

OR APPLIED FOR, ON THIS LEASE, FT.

## 16. NO. OF ACRES IN LEASE

254.87/ acres

## 19. PROPOSED DEPTH

7883'

17. NO. OF ACRES ASSIGNED  
TO THIS WELL

320 E/2-MV &amp; 320 S/2-DK

## 20. ROTARY OR CABLE TOOLS

Rotary

## 21. ELEVATIONS (Show whether DF, RT, GR, etc.)

This action is subject to technical and  
procedural review pursuant to 43 CFR 3160.4  
and appeal pursuant to 43 CFR 3165.4.

unprepared groundlevel

## 22. APPROX. DATE WORK WILL START\*

4th Qtr 2000

## PROPOSED CASING AND CEMENTING PROGRAM

SIZE OF HOLE	GRADE SIZE OF CASING	WEIGHT PER FOOT	SETTING DEPTH	QUANTITY OF CEMENT
12-1/4"	9-5/8"	36#, J/K-55	320'*	158.5sx Type III (1.41 yield=223 cf)
8-3/4"	7"	20#, J/K-55	3778'	L-453.5sx TypeIII(2.37 yield=1075cf)
				T-50.0 sx Type III (1.4 yield=70 cf)
6-1/4"	4-1/2"	11.6#, I-80	7883'-	322.7 sx C1 H (2.13 yield=687 cf)**

\* The surface casing will be set at a minimum of 320', but could be set deeper if required to maintain hole stability.

\*\* The production casing cement is calculated to cover the openhole interval with 60% excess and annular volume 100' within intermediate casing shoe. Depending on hole conditions, the well may be cemented in a single stage or two staged.

See attached for details on the BOP equipment and Cathodic Protection.

The pipeline for this well qualifies for APD/ROW process. See attached WFS plat and details in the Surface Use Plan.

DRILLING OPERATIONS AUTHORIZED ARE  
SUBJECT TO COMPLIANCE WITH ATTACHED  
"GENERAL REQUIREMENTS"

IN ABOVE SPACE DESCRIBE PROPOSED PROGRAM: If proposal is to deepen, give data on present productive zone and proposed new productive zone. If proposal is to drill or deepen directionally, give pertinent data on subsurface locations and measured and true vertical depths. Give blowout preventer program, if any.

24.

SIGNED

Monica D. Rodahl

TITLE

Regulatory Assistant

DATE

03/28/00

(This space for Federal or State office use)

PERMIT NO.

APPROVAL DATE

Application approval does not warrant or certify that the applicant holds legal or equitable title to those rights in the subject lease which would entitle the applicant to conduct operations thereon.

CONDITIONS OF APPROVAL, IF ANY:

/s/ Jim Lovato

MAY 22 2000

APPROVED BY

TITLE

DATE

\*See Instructions On Reverse Side

Title 18 U.S.C. Section 1001, makes it a crime for any person knowingly and willfully to make to any department or agency of the United States any false, fictitious or fraudulent statements or representations as to any matter within its jurisdiction.

District I  
PO Box 1988, Hobbs, NM 88241-1988  
District II  
PO Drawer DD, Artesia, NM 88211-0719  
District III  
1000 Rio Branco Rd., Aztec, NM 87410  
District IV  
PO Box 2088, Santa Fe, NM 87504-2088

State of New Mexico  
Energy, Minerals & Natural Resources Department

OIL CONSERVATION DIVISION  
PO Box 2088  
Santa Fe, NM 87504-2088

Form C-102  
Revised February 21, 1994  
Instructions on back  
Submit to Appropriate District Office  
State Lease - 4 Copies  
Fee Lease - 3 Copies

☐ AMENDED REPORT

WELL LOCATION AND ACREAGE DEDICATION PLAT

API Number 30-039-26423		Pool Code 72319 -	Pool Name Blanco Mesaverde
Property Code 009257	Property Name SAN JUAN 29-6 UNIT		Well Number 35M
OGRID No. 017654	Operator Name PHILLIPS PETROLEUM COMPANY		Elevation 6461'

10 Surface Location

UL or lot no.	Section	Township	Range	Lot Idn	Feet from the	North/South line	Feet from the	East/West line	County
P	15	29N	6W		215'	SOUTH	820'	EAST	RIO ARriba

11 Bottom Hole Location If Different From Surface

UL or lot no.	Section	Township	Range	Lot Idn	Feet from the	North/South line	Feet from the	East/West line	County
P									

12 Dedicated Acres 320 E/2	13 Joint or Infill I	14 Consolidation Code U	15 Order No.
-------------------------------	-------------------------	----------------------------	--------------

NO ALLOWABLE WILL BE ASSIGNED TO THIS COMPLETION UNTIL ALL INTERESTS HAVE BEEN CONSOLIDATED  
OR A NON-STANDARD UNIT HAS BEEN APPROVED BY THE DIVISION

16	N89°55'E	5265.48'	17 OPERATOR CERTIFICATION I hereby certify that the information contained herein is true and complete to the best of my knowledge and belief  Monica D. Rodahl Signature Monica D. Rodahl Printed Name Regulatory Assistant Title March 28, 2000 Date	
	Section 15	SF-078278		18 SURVEYOR CERTIFICATION I hereby certify that the well location shown on this plat was plotted from field notes of actual surveys made by me or under my supervision, and that the same is true and correct to the best of my belief.  02/17/2000 Date of Survey Signature and Seal of Professional Surveyor: HENRY P. BROADHURST, JR. NEW MEXICO REGISTERED PROFESSIONAL SURVEYOR 11224
	SF-080377	2540.77 acres 215' 820'		
S89°59'E	5272.08'			

District I  
70 Box 1988, Hobbs, NM 88241-1988  
District II  
PO Drawer DD, Artesia, NM 88211-0719  
District III  
1000 Rio Brazos Rd., Aztec, NM 87410  
District IV  
PO Box 2088, Santa Fe, NM 87504-2088

State of New Mexico  
Energy, Minerals & Natural Resources Department

OIL CONSERVATION DIVISION  
PO Box 2088  
Santa Fe, NM 87504-2088

Form C-102  
Revised February 21, 1994  
Instructions on back  
Submit to Appropriate District Office  
State Lease - 4 Copies  
Fee Lease - 3 Copies

☐ AMENDED REPORT

WELL LOCATION AND ACREAGE DEDICATION PLAT

API Number 30-039-26423		Pool Code 71599	Pool Name Basin Dakota
Property Code 009257	Property Name SAN JUAN 29-6 UNIT		Well Number 35M
OGRID No. 017654	Operator Name PHILLIPS PETROLEUM COMPANY		Elevation 6461'

10 Surface Location

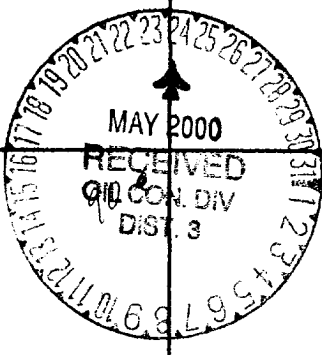
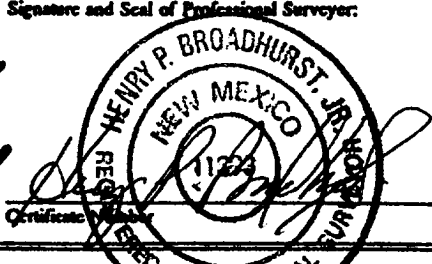
UL or lot no. P	Section 15	Township 29N	Range 6W	Lot Idn	Feet from the 215'	North/South line SOUTH	Feet from the 820'	East/West line EAST	County RIO ARriba
--------------------	---------------	-----------------	-------------	---------	-----------------------	---------------------------	-----------------------	------------------------	----------------------

11 Bottom Hole Location If Different From Surface

UL or lot no. P	Section	Township	Range	Lot Idn	Feet from the	North/South line	Feet from the	East/West line	County
--------------------	---------	----------	-------	---------	---------------	------------------	---------------	----------------	--------

Dedicated Acres 320 S/2	Joint or Infill I	Consolidation Code U	Order No.
----------------------------	----------------------	-------------------------	-----------

NO ALLOWABLE WILL BE ASSIGNED TO THIS COMPLETION UNTIL ALL INTERESTS HAVE BEEN CONSOLIDATED  
OR A NON-STANDARD UNIT HAS BEEN APPROVED BY THE DIVISION

16	N89°55'E	5265.48'		17 OPERATOR CERTIFICATION I hereby certify that the information contained herein is true and complete to the best of my knowledge and belief  Monica D Rodahl Signature Monica D. Rodahl Printed Name Regulatory Assistant Title March 28, 2000 Date
5280.00'	Section 15	5280.00'		18 SURVEYOR CERTIFICATION I hereby certify that the well location shown on this plat was plotted from field notes of actual surveys made by me or under my supervision, and that the same is true and correct to the best of my belief.  02/17/2000 Date of Survey Signature and Seal of Professional Surveyor: 
5280.00'	NM-05220	SF-078278	2540.77 acre 01.5A 215' 820'	
N00°02'E	SF-080377	S89°59'E	5272.08'	

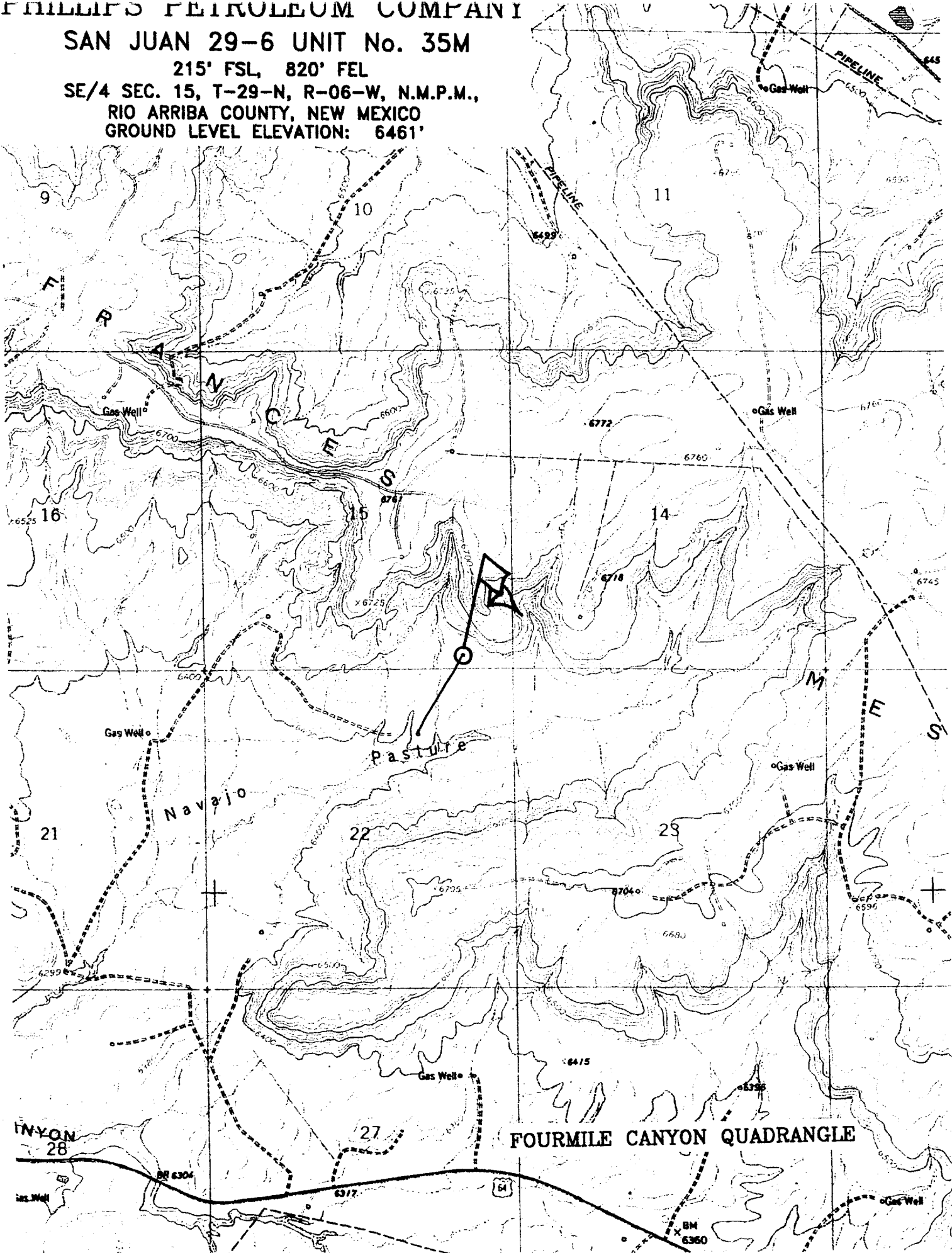
SAN JUAN 29-6 UNIT No. 35M

215' FSL, 820' FEL

SE/4 SEC. 15, T-29-N, R-06-W, N.M.P.M.,

RIO ARriba COUNTY, NEW MEXICO

GROUND LEVEL ELEVATION: 6461'



## **BOP AND RELATED EQUIPMENT CHECK LIST**

### **3M SYSTEM:**

2 hydr. rams (pipe & blind) or hydr. ram and annular with blind ram on bottom

Kill Line (2-inch minimum)

1 kill line valve (2-inch minimum)

1 choke line valve

2 chokes (refer to diagram in attachment 1) on choke manifold

Upper kelly cock valve in open position with handle available

Safety valve (in open position) and subs to fit all drill strings in use (with handle available)

Pressure gauged on choke manifold

2 inch minimum choke line

Fill-up line above the uppermost preventer

*The BOPs will be pressure tested according to Onshore Order #2 III, A 1 and 30% safety factor.*



**NEW MEXICO ENERGY, MINERALS  
& NATURAL RESOURCES DEPARTMENT**

OIL CONSERVATION DIVISION  
2040 South Pacheco Street  
Santa Fe, New Mexico 87505  
(505) 827-7131

May 5, 2000



Phillips Petroleum Company  
5525 Highway 64 – NBU 3004  
Farmington, New Mexico 87401  
Attention: S. Scott Prather

*Administrative Order NSL-4445*

Dear Mr. Prather:

Reference is made to the following: (i) your application dated March 21, 2000; and (ii) the records of the Division in Santa Fe and Aztec: all concerning Phillips Petroleum Company's request for an exception to the well location requirements provided within the "*Special Rules and Regulations for the Basin-Dakota Pool*," as promulgated by Division Order No. R-10987, for a non-standard infill gas well location in an existing standard 320-acre lay-down gas spacing and proration unit for the Basin-Dakota Pool comprising the S/2 of Section 15, Township 29 North, Range 6 West, NMPM, Rio Arriba County, New Mexico. This unit is currently dedicated to Phillips Petroleum Company's San Juan "29-6" Unit Well No. 35 (API No. 30-039-82386), located a standard initial gas well location 890 feet from the South line and 1090 feet from the West line (Unit M) of Section 15.

The application has been duly filed under the provisions of Division Rules 104.F and 605.B.

By the authority granted me under the provisions of Division Rule 104.F (2), the following described well to be drilled at an unorthodox infill gas well location in Section 15 is hereby approved:

San Juan "29-6" Unit Well No. 35-M  
215' FSL & 820' FEL (Unit P)  
(API No. 30-039-26423).

*p-15-29N-6W*

Further, both of the aforementioned San Juan "29-6" Unit Well Nos. 35 and 35-M and existing gas spacing and proration unit will be subject to all existing rules, regulations, policies, and procedures applicable to prorated gas pools in Northwest, New Mexico.

Sincerely,

*Lori Wrotenberg*

Lori Wrotenberg  
Director

LW/MES/kv

cc: New Mexico Oil Conservation Division - Aztec /  
U. S. Bureau of Land Management - Farmington