

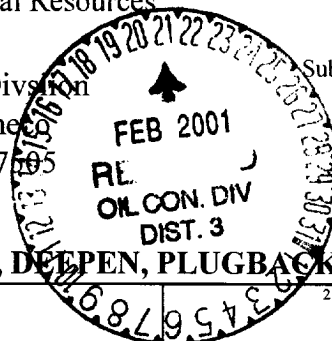
District I
1625 N. French Dr., Hobbs, NM 88240
District II
811 S. 1st Street, Artesia, NM 88210
District III
1000 Rio Brazos Rd., Aztec, NM 87410
District IV
2040 South Pacheco, Santa Fe, NM 87505

State of New Mexico
Energy, Minerals & Natural Resources

Form C-101
Revised March 17, 1999

Oil Conservation Division
2040 South Pacheco
Santa Fe, NM 87505

Submit to appropriate District Office
State Lease - 6 Copies
Fee Lease - 5 Copies



☐ AMENDED REPORT

APPLICATION FOR PERMIT TO DRILL, RE-ENTER, DEEPEN, PLUGBACK, OR ADD A ZONE

¹ Operator Name and Address Phillips Petroleum Company 5525 Highway 64, NBU 3004, Farmington, NM 87401		² OGRID Number 017654
⁴ Property Code 009257	⁵ Property Name San Juan 29-6 Unit	³ API Number 30-039-26676 ⁶ Well No. 73B

⁷ Surface Location

UL or lot no.	Section	Township	Range	Lot. Idn	Feet from the	North/South Line	Feet from the	East/West line	County
C	20	29N	6W		475'	North	2171'	West	Rio Arriba

⁸ Proposed Bottom Hole Location If Different From Surface

UL or lot no.	Section	Township	Range	Lot. Idn	Feet from the	North/South Line	Feet from the	East/West line	County
C									

⁹ Proposed Pool 1 Blanco Mesaverde 72319	¹⁰ Proposed Pool 2
--	-------------------------------

¹¹ Work Type Code N	¹² Well Type Code G	¹³ Cable/Rotary R	¹⁴ Lease Type Code P	¹⁵ Ground Level Elevation 6427'
¹⁶ Multiple N	¹⁷ Proposed Depth 5867'	¹⁸ Formation Mesaverde	¹⁹ Contractor Key Energy	²⁰ Spud Date 2nd Qtr 2001

²¹ Proposed Casing and Cement Program

Hole Size	Casing Size	Casing weight/foot	Setting Depth	Sacks of Cement	Estimated TOC
12-1/4"	9-5/8"	32.3#, H-40	320'*	158.5 sx	surface -
8-3/4"	7"	20#, J/K-55	3594'	L-430 sx; T-50sx	surface -
6-1/4"	4-1/2"	11.6#, N/I-80	5867'	160 sx	** -

²² Describe the proposed program. If this application is to DEEPEN or PLUG BACK, give the data on the present productive zone and proposed new productive zone.

Describe the blowout prevention program, if any. Use additional sheets if necessary.

* The surface casing will be set at a minimum of 320', but could be set deeper if required to maintain hole stability.

** The Production String casing cement is designed to cover the openhole section with 40% excess and 100' inside the 7" shoe.

See attached for the details on the BOP program and the cathodic protection groundbed.

²³ I hereby certify that the information given above is true and complete to the best of my knowledge and belief.

Signature:

Patsy Clugston

Printed name: Patsy Clugston

Title: Sr. Regulatory/Proration Clerk

Date: 2/20/01

Phone: 505-599-3454

OIL CONSERVATION DIVISION

Approved by:

Title: DEPUTY OIL & GAS INSPECTOR, DIST. 3

Approval Date:

FEB 21 2001

Expiration Date:

FEB 21 2002

Conditions of Approval:

Attached ☐

District I
 191 Box 1980, Hobbs, NM 88241-1980
 District II
 811 South First, Artesia, NM 88210
 District III
 1000 Rio Bravos Rd., Aztec, NM 87410
 District IV
 2040 South Pacheco, Santa Fe, NM 87505

State of New Mexico
 Energy, Minerals & Natural Resources Department

OIL CONSERVATION DIVISION
 2040 South Pacheco
 Santa Fe, NM 87505

Form C-102
 Revised October 18, 1994
 Instructions on back
 Submit to Appropriate District Office
 State Lease - 4 Copies
 Fee Lease - 3 Copies

☐ AMENDED REPORT

WELL LOCATION AND ACREAGE DEDICATION PLAT

API Number 30-039-26676		Pool Code 72319-	Pool Name Blanco Mesaverde
Property Code 009257	Property Name SAN JUAN 29-6 UNIT		Well Number 73B
OGRID No. 017654	Operator Name PHILLIPS PETROLEUM COMPANY		Elevation 6427'

10 Surface Location

UL or lot no.	Section	Township	Range	Lot Ida	Feet from the	North/South line	Feet from the	East/West line	County
C	20	29N	6W		475'	NORTH	2171'	WEST	RIO ARriba

11 Bottom Hole Location If Different From Surface

UL or lot no.	Section	Township	Range	Lot Ida	Feet from the	North/South line	Feet from the	East/West line	County
C									

12 Dedicated Acres	13 Joint or Infill	14 Consolidation Code	15 Order No.
320 W/2	Y	U	

NO ALLOWABLE WILL BE ASSIGNED TO THIS COMPLETION UNTIL ALL INTERESTS HAVE BEEN CONSOLIDATED OR A NON-STANDARD UNIT HAS BEEN APPROVED BY THE DIVISION

<p>16</p> <p>2171'</p> <p>475'</p> <p>S89°55'E 5281.32'</p> <p>SF-078426-A</p> <p>200.00 acres</p> <p>Section 20</p> <p>5280.00'</p> <p>5280.00'</p> <p>N00°01'E</p> <p>N00°01'E</p> <p>S89°52'E 5285.28'</p>		<p>17 OPERATOR CERTIFICATION</p> <p>I hereby certify that the information contained herein is true and complete to the best of my knowledge and belief</p> <p><i>Patsy Clugston</i></p> <p>Signature Patsy Clugston</p> <p>Printed Name Sr. Regulatory/Proration Clerk</p> <p>Title February 20, 2001</p> <p>Date</p>
		<p>18 SURVEYOR CERTIFICATION</p> <p>I hereby certify that the well location shown on this plat was plotted from field notes of actual surveys made by me or under my supervision, and that the same is true and correct to the best of my belief.</p> <p>09/27/00</p> <p>Date of Survey</p> <p>Signature and Seal of Professional Surveyor:</p> <p><i>Henry P. Broadhurst</i></p> <p>Certification Number 11302</p>

PHILLIPS PETROLEUM COMPANY

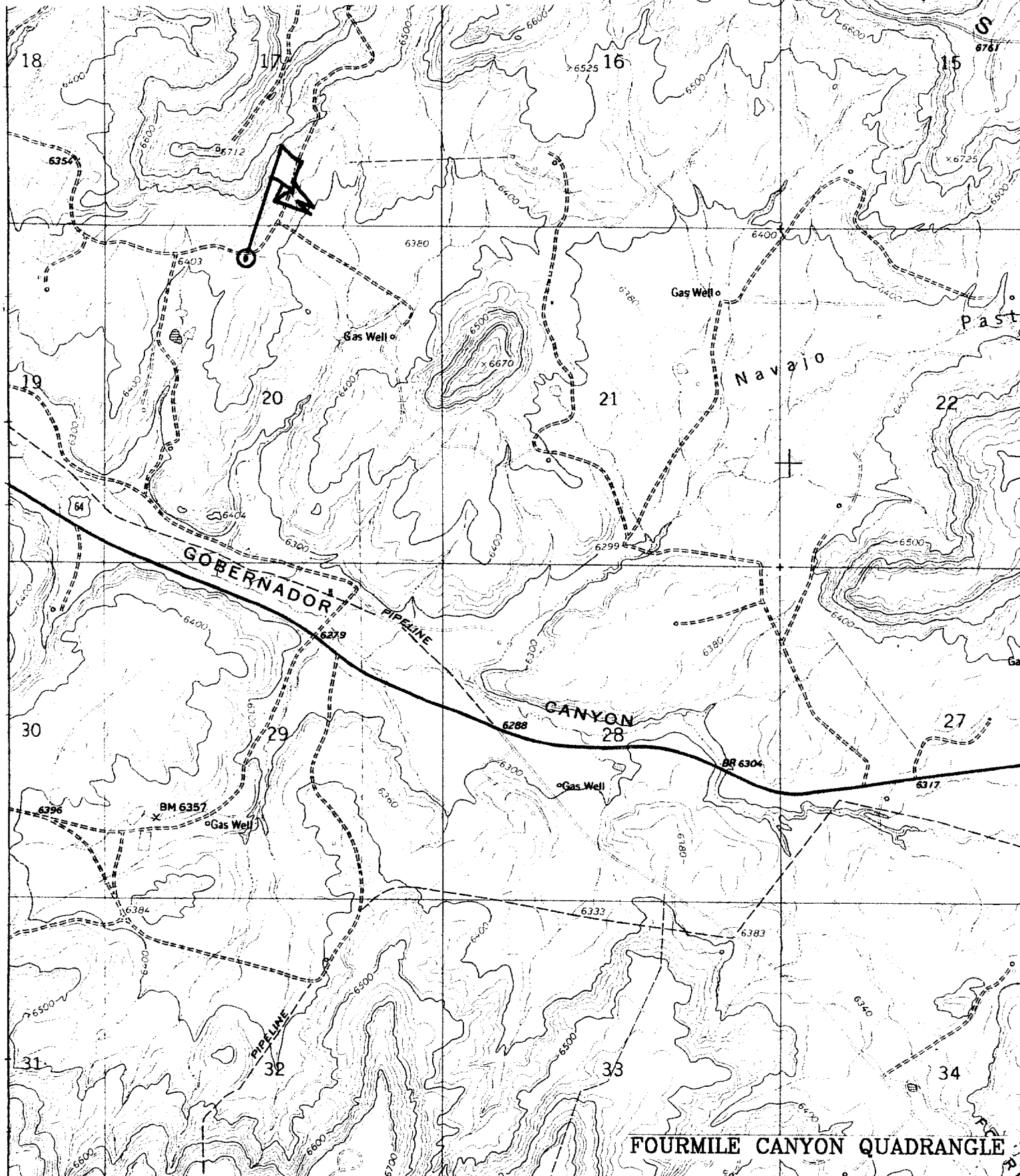
SAN JUAN 29-6 UNIT No. 73B

475' FNL, 2171' FWL

NW/4 SEC. 20, T-29-N, R-06-W, N.M.P.M.,

RIO ARRIBA COUNTY, NEW MEXICO

GROUND LEVEL ELEVATION: 6427'



FOURMILE CANYON QUADRANGLE

BOP AND RELATED EQUIPMENT CHECK LIST

3M SYSTEM:

2 hydr. rams (pipe & blind) or hydr. ram and annular with blind ram on bottom

Kill Line (2-inch minimum)

1 kill line valve (2-inch minimum)

1 choke line valve

2 chokes (refer to diagram in attachment 1) on choke manifold

Upper kelly cock valve in open position with handle available

Safety valve (in open position) and subs to fit all drill strings in use (with handle available)

Pressure gauged on choke manifold

2 inch minimum choke line

Fill-up line above the uppermost preventer

The BOPs will be pressure tested according to Onshore Order #2 III, A 1 and 30% safety factor.