

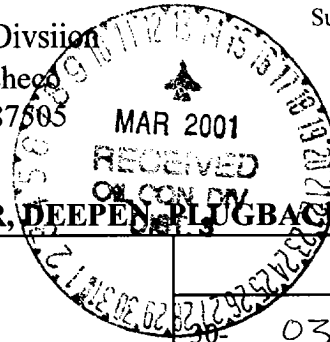
State of New Mexico  
Energy, Minerals & Natural Resources

Form C-101  
Revised March 17, 1999

District I  
1625 N. French Dr., Hobbs, NM 88240  
District II  
811 S. 1st Street, Artesia, NM 88210  
District III  
1000 Rio Brazos Rd., Aztec, NM 87410  
District IV  
2040 South Pacheco, Santa Fe, NM 87505

Oil Conservation Division  
2040 South Pacheco  
Santa Fe, NM 87505

Submit to appropriate District Office  
State Lease - 6 Copies  
Fee Lease - 5 Copies



☐ AMENDED REPORT

**APPLICATION FOR PERMIT TO DRILL, RE-ENTER, DEEPEN, PLUGBACK, OR ADD A ZONE**

<sup>1</sup> Operator Name and Address Phillips Petroleum Company 5525 Highway 64, NBU 3004, Farmington, NM 87401		<sup>2</sup> OGRID Number 017654
<sup>4</sup> Property Code 009257	<sup>5</sup> Property Name San Juan 29-6 Unit	<sup>3</sup> API Number 039-26707 <sup>6</sup> Well No. #10C

**<sup>7</sup> Surface Location**

UL or lot no.	Section	Township	Range	Lot. Idn	Feet from the	North/South Line	Feet from the	East/West line	County
J	2	29N	6W		1330'	South	2250'	East	Rio Arriba

**<sup>8</sup> Proposed Bottom Hole Location If Different From Surface**

UL or lot no.	Section	Township	Range	Lot. Idn	Feet from the	North/South Line	Feet from the	East/West line	County
J									

<sup>9</sup> Proposed Pool 1 Blanco Mesaverde 72319	<sup>10</sup> Proposed Pool 2
--	-------------------------------

<sup>11</sup> Work Type Code N —	<sup>12</sup> Well Type Code G —	<sup>13</sup> Cable/Rotary R	<sup>14</sup> Lease Type Code State -E- 289-3 —	<sup>15</sup> Ground Level Elevation 6463'
<sup>16</sup> Multiple N —	<sup>17</sup> Proposed Depth 5895' —	<sup>18</sup> Formation Mesaverde	<sup>19</sup> Contractor Key Energy	<sup>20</sup> Spud Date End of 1st Qtr 2001

**<sup>21</sup> Proposed Casing and Cement Program**

Hole Size	Casing Size	Casing weight/foot	Setting Depth	Sacks of Cement	Estimated TOC
12-1/4"	9-5/8"	32.3#, H-40	320' *	158.5 sx	surface —
8-3/4"	7"	20#, J/K-55	3658'	L-439 sx; T-50sx	surface —
6-1/4"	4-1/2"	11.6#, N/I-80	5895' —	179 sx	**

<sup>22</sup> Describe the proposed program. If this application is to DEEPEN or PLUG BACK, give the data on the present productive zone and proposed new productive zone.

Describe the blowout prevention program, if any. Use additional sheets if necessary.

\* The surface casing will be set at a minimum of 320', but could be set deeper if required to maintain hole stability.

\*\* The Production String casing cement is designed to cover openhole section with 40% excess and 100' inside the 7" shoe.

See attached for the details onf the BOP program and the cathodic protection groundbed.

<sup>23</sup> I hereby certify that the information given above is true and complete to the best of my knowledge and belief.

Signature: *Patsy Clugston*

Printed name: Patsy Clugston

Title: Sr. Regulatory/Proration Clerk

Date: 3/9/01

Phone: 505-599-3454

**OIL CONSERVATION DIVISION**

Approved by: *[Signature]*

Title: DEPUTY OIL & GAS INSPECTOR, DIST. #3

Approval Date: MAR 13 2001

Expiration Date: MAR 13 2002

Conditions of Approval:

Attached ☐

☐ AMENDED REPORT

OIL CONSERVATION DIVISION  
2040 South Pacheco  
Santa Fe, NM 87505

## WELL LOCATION AND ACREAGE DEDICATION PLAT

APL Number 30-039-76707		Pool Code 72319	Pool Name Blanco Mesaverde	
Property Code 009257	Property Name SAN JUAN 29-6 UNIT			Well Number 10C
OGRID No. 017654	Operator Name PHILLIPS PETROLEUM COMPANY			Elevation 6463'

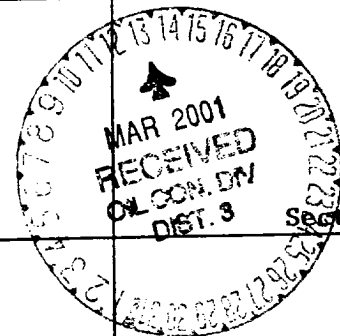
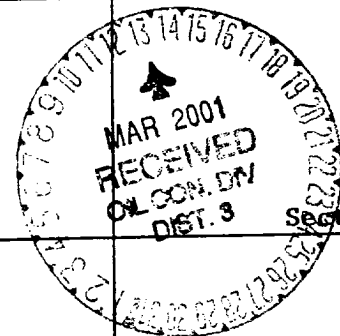
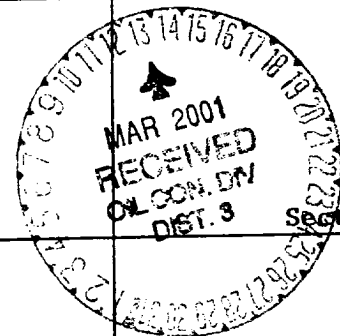
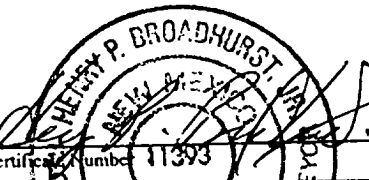
<sup>10</sup> Surface Location

UL or lot no. J	Section 2	Township 29N	Range 6W	Lot Idn	Feet from the 1330'	North/South line SOUTH	Feet from the 2250'	East/West line EAST	County RIO ARRIBA
--------------------	--------------	-----------------	-------------	---------	------------------------	---------------------------	------------------------	------------------------	----------------------

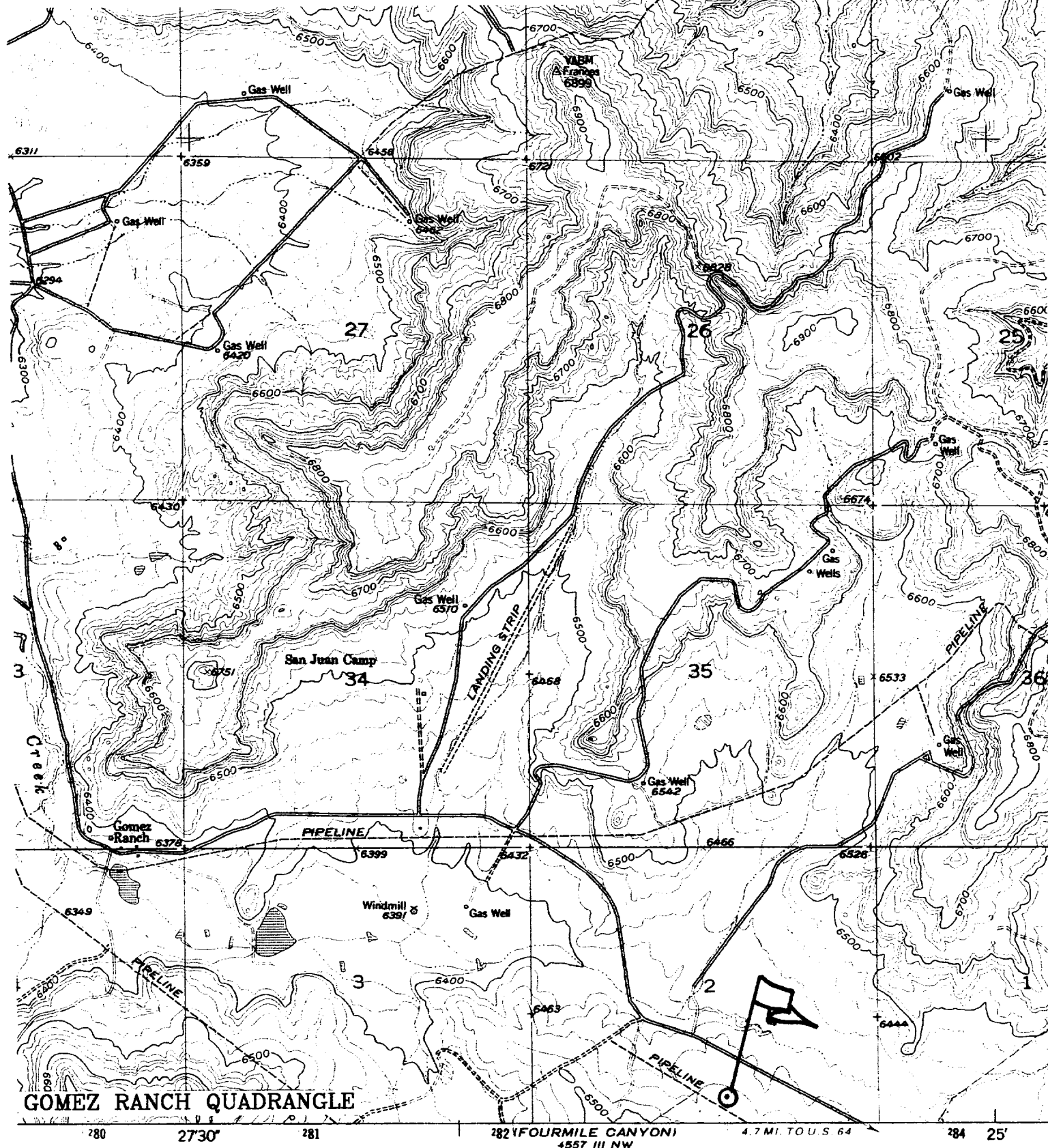
## " Bottom Hole Location If Different From Surface

UL or lot no. J	Section	Township	Range	Lot Idn	Feet from the	North/South line	Feet from the	East/West line	County
" Dedicated Acres 319.23 E/2	" Joint or Infill I	" Consolidation Code U		" Order No.					

NO ALLOWABLE WILL BE ASSIGNED TO THIS COMPLETION UNTIL ALL INTERESTS HAVE BEEN CONSOLIDATED OR A NON-STANDARD UNIT HAS BEEN APPROVED BY THE DIVISION

NON-STANDARD UNIT HAS BEEN APPROVED BY THE DIVISION		17 OPERATOR CERTIFICATION	
16	S89°58'W	5280.00'	I hereby certify that the information contained herein is true and complete to the best of my knowledge and belief
8	7	6	
5264.82'		E-289-51	5
		E-289-52	2
S00°12'E		Section 2	18 SURVEYOR CERTIFICATION
		E-289-3 160 acres	
S00°09'W		2250'	I hereby certify that the well location shown on this plat was plotted from field notes of actual surveys made by me or under my supervision, and that the same is true and correct to the best of my belief.
		1330'	
S89°45'E		5281.32'	02/21/01
			Date of Survey
			Signature and Seal of Professional Surveyor:
			

RIO ARRIBA COUNTY, NEW MEXICO  
GROUND LEVEL ELEVATION: 6463'



# ATTACHMENT 1

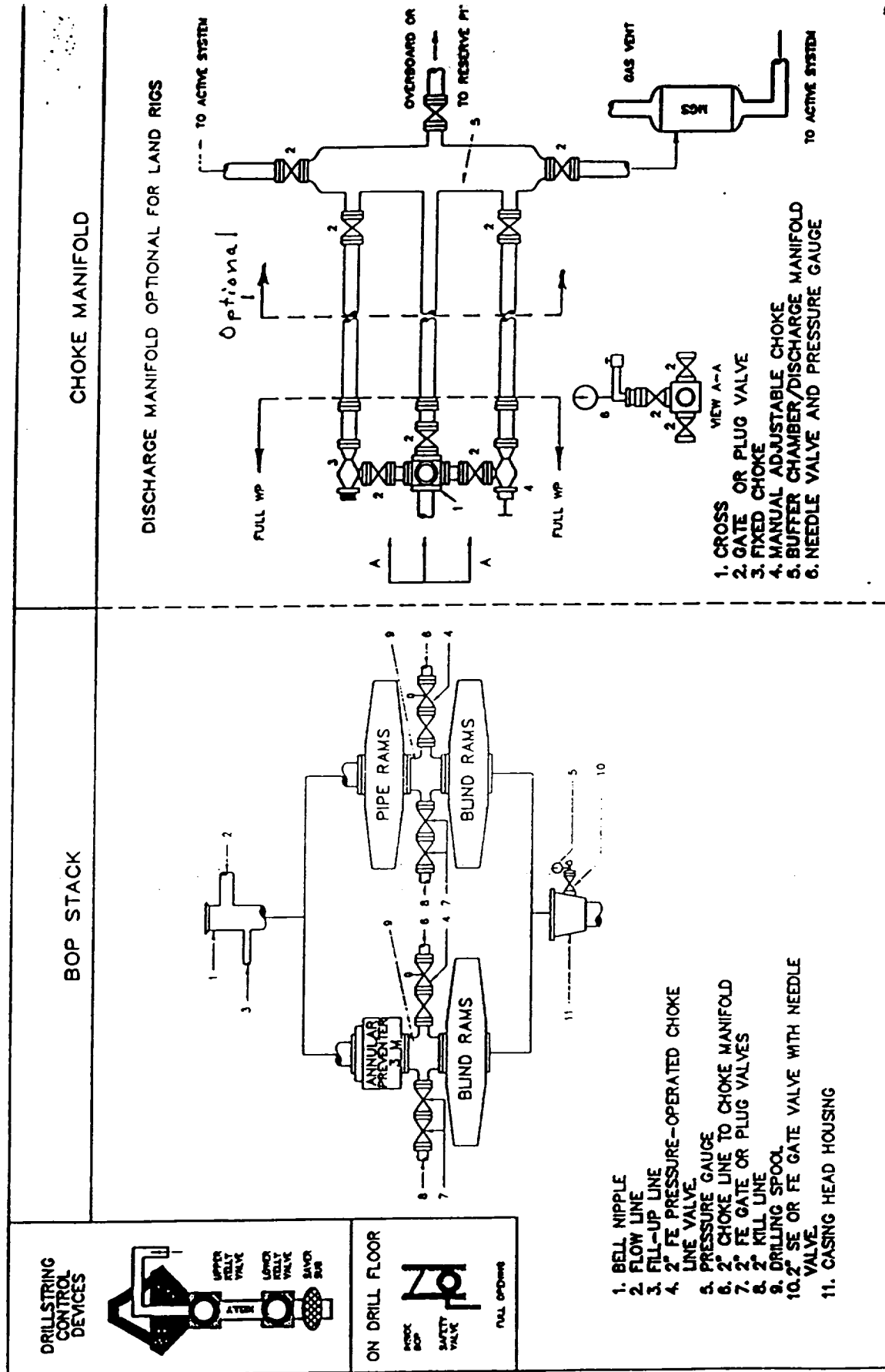


Fig. 2.4. Class 2 BOP and Choke Manifold.