

RECEIVED

SEP 05 1990

OIL CON. DIV

State of New Mexico
Energy, Minerals and Natural Resources Department

Form C-101

OIL CONSERVATION DIVISION

P.O. Box 2088

Santa Fe, New Mexico 87504-2088

APPLICANT DIST. 3
APPLICATION FOR PERMIT TO DRILL, DEEPEN,
OR PLUG BACK

API NO. (assigned by OCD on new well)

30-039-24904

5. Indicate Type of Lease

FEE

6. State Oil & Gas Lease No.

1a. Type of Work

DRILL

b. Type of Well

GAS

SINGLE ZONE

7. Lease Name or Unit Agreement Name

7465 SAN JUAN 29-7 UNIT

2. Name of Operator

MERIDIAN OIL INC.

8. Well No.

562

3. Address of Operator

14538
PO Box 4289, Farmington, NM 87499

9. Pool Name or Wildcat

BASIN FRUITLAND COAL

4. Well Location

Unit letter B 1105' FNL 1850' FEL

Section 24 T29N R07W NMPM RIO ARRIBA COUNTY

10. Proposed Depth

3146'

11. Formation

FRUITLAND COAL

12. Rotary or C.T.

Rotary

13. Elevation

6243' GL

14. Bond Type

statewide

15. Drill. Contractor

16. Est. Start Date

upon approval

17.

PROPOSED CASING AND CEMENT PROGRAM

SIZE HOLE	SIZE CASING	WT. PER FT.	SET. DEPTH	SKS OF CEMENT	EST. TOP
12 1/4"	8 5/8"	24.0#	200 ft.	248 cu.ft.	circ surface
7 7/8"	5 1/2"	15.5#	3146 ft.	1098 cu.ft.	circ surface

The Fruitland Coal formation will be completed.

A minimum 2000 psi working pressure double gate blowout preventer equipped with blind and pipe rams will be used for blow out prevention on this well. This gas is dedicated.

The E/2 of Sec 24 is dedicated to this well.

I hereby certify that the information above is true and complete to the best of my knowledge and belief.

SIGNATURE

[Signature]

TITLE Reg. Drilling Engr. DATE

8/28/90

(This space for State Use)

APPROVED BY

[Signature]

DEPUTY OIL & GAS INSPECTOR, DIST. #3
TITLE

DATE

SEP 10 1990

Conditions of approval, if any:

APPROVAL EXPIRES 3-10-91
UNLESS DRILLING IS COMMENCED.
SPUD NOTICE MUST BE SUBMITTED
WITHIN 180 DAYS

Submit to Appropriate
District Office
State Lease - 4 copies
Fee Lease - 3 copies

State of New Mexico
Energy, Minerals and Natural Resources Department

Form C-102
Revised 1-1-89

OIL CONSERVATION DIVISION

P.O. Box 2088
Santa Fe, New Mexico 87504-2088

DISTRICT I
P.O. Box 1980, Hobbs, NM 88240

DISTRICT II
P.O. Drawer DD, Artesia, NM 88210

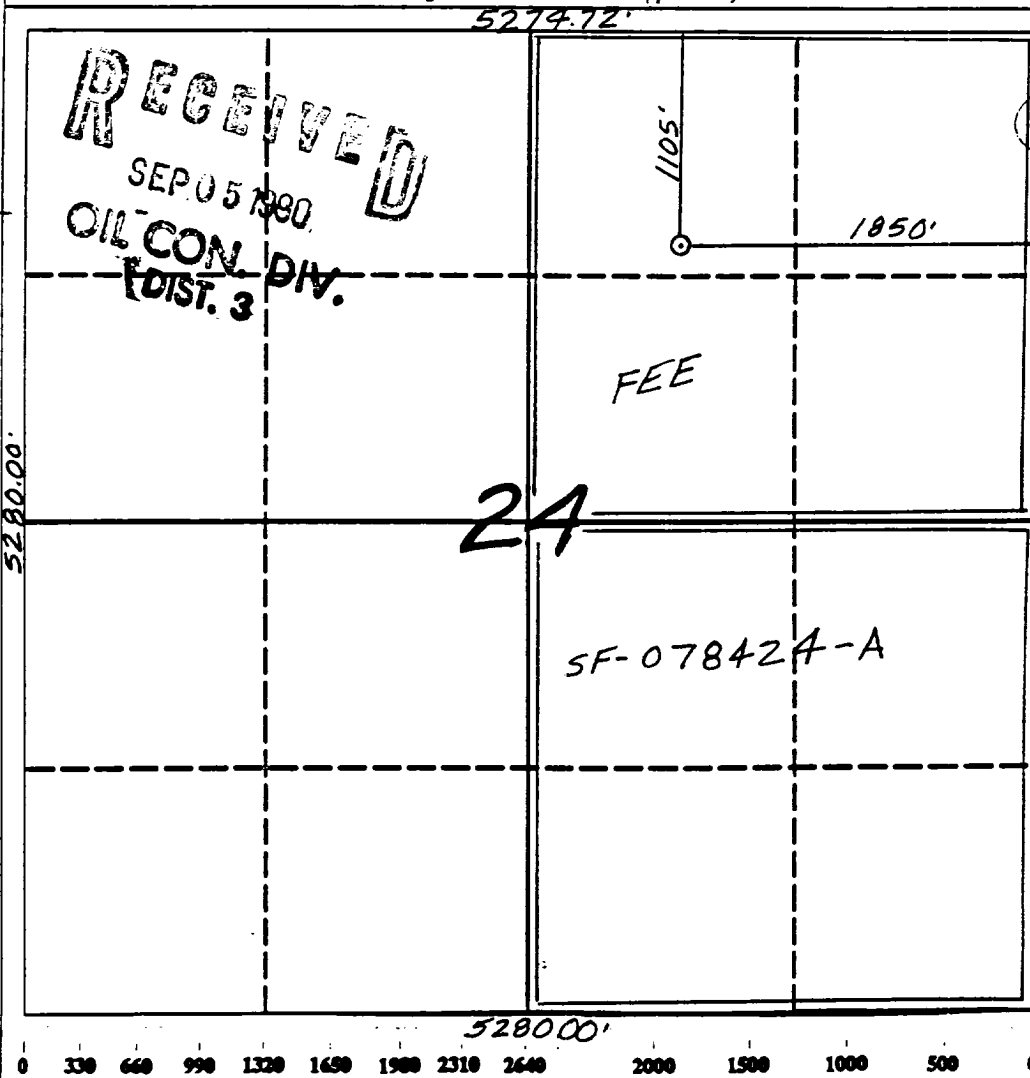
DISTRICT III
1000 Rio Brazos Rd., Aztec, NM 87410

WELL LOCATION AND ACREAGE DEDICATION PLAT

All Distances must be from the outer boundaries of the section

Operator Meridian Oil Inc.		Lease San Juan 29-7 Unit (Fee)		Well No. 562
Unit Letter B	Section 24	Township 29 North	Range 7 West	County Rio Arriba
Actual Footage Location of Well: 1105 feet from the North line and 1850 feet from the East line				
Ground level Elev. 6243'	Producing Formation Fruitland Coal		Pool Basin	Dedicated Acreage: 320 Acres

- Outline the acreage dedicated to the subject well by colored pencil or hatchure marks on the plat below.
- If more than one lease is dedicated to the well, outline each and identify the ownership thereof (both as to working interest and royalty).
- If more than one lease of different ownership is dedicated to the well, have the interest of all owners been consolidated by communitization, unitization, force-pooling, etc.?
☒ Yes ☐ No If answer is "yes" type of consolidation unitization
If answer is "no" list the owners and tract descriptions which have actually been consolidated. (Use reverse side of this form if necessary.)
No allowable will be assigned to the well until all interests have been consolidated (by communitization, unitization, forced-pooling, or otherwise) or until a non-standard unit, eliminating such interest, has been approved by the Division.



OPERATOR CERTIFICATION

I hereby certify that the information contained herein is true and complete to the best of my knowledge and belief.

Peggy Bradfield
Signature
Peggy Bradfield

Printed Name
Regulatory Affairs

Position
Meridian Oil Inc.

Company
8-28-90

Date

SURVEYOR CERTIFICATION

I hereby certify that the well location shown on this plat was plotted from field notes of actual surveys made by me or under my supervision, and that the same is true and correct to the best of my knowledge and belief.

7-11-90

Date Surveyed

Neale C. Edwards
Signature of Surveyor

NEW MEXICO
6857
REGISTERED LAND SURVEYOR

Certificate No.
Neale C. Edwards