

F 30-039-22267 12-12-79

F. Loc. 1830/N; 1785/W Elev. 6765 GL Spd. Comp. TD PB

asing S. @ W Sx. Int. @ W Sx. Pr. Sx. T. @
ig. Perf. Prod. Stim.

T
R
A
N
S

BO/D		MCF/D After		Hrs.	SICP	PSI After	Days GOR	Grav.	1st Del.					5					
TOPS		NIID	X	Well Log		TEST DATA													
Kirtland		C-103		Plat	X	Schd.	PC	Q	PW	PD	D	Ref.No.							
Fruitland		C-104		Electric Log															
Pictured Cliffs				C-122															
Cliff House		Ditr		Dfa															
Manatee		Dair		Dac															
Point Lookout																			
Manaos																			
Gallup																			
Sanostee																			
Greenhorn																			
Dakota																			
Morrison																			
Entrada																			

W/320

W/320

Blanco MV Co. RA S 22 r 29N R 7W uF Oper. El Paso Natural Gas Co. San Juan 29-7 Unit No. 66A

P.O. Box 959
Farmington, New Mexico 87401

July 7, 1980

El Paso Natural Gas Company
P.O. Box 239
Farmington, New Mexico 87401

Gentlemen:

Enclosed are you Applications for Permit to Drill (APD's) San Juan 29-7
Unit wells number 86-A, NE $\frac{1}{4}$ sec. 17, number 50-A, SE $\frac{1}{4}$ sec. 21,
number 51-A, NE $\frac{1}{4}$ sec. 21, number 66-A, NE $\frac{1}{4}$ sec. 22, and number 72-A,
SE $\frac{1}{4}$ sec. 26, all in T. 29 N., R. 7 W., Rio Arriba County, New Mexico.
The subject APD's are returned unapproved as requested by your
sundry notices of June 13, 1980.

Sincerely yours,

James F. Sims
District Oil and Gas Supervisor

cc: DRO 9-1
NMOCC
BLM
Well files
Chronological

JFSims:cap



UNITED STATES
DEPARTMENT OF THE INTERIOR
GEOLOGICAL SURVEY

30-039-22267

APPLICATION FOR PERMIT TO DRILL, DEEPEN, OR PLUG BACK

1a. TYPE OF WORK

DRILL ☒DEEPEN ☐PLUG BACK ☐

b. TYPE OF WELL

OIL
WELL ☐GAS
WELL ☒

OTHER

SINGLE
ZONE ☐MULTIPLE
ZONE ☒

2. NAME OF OPERATOR

El Paso Natural Gas Company

3. ADDRESS OF OPERATOR

PO Box 289, Farmington, NM 87401

4. LOCATION OF WELL (Report location clearly and in accordance with any State requirements.)*

At surface

1830'N, 1785'W

At proposed prod. zone

same

14. DISTANCE IN MILES AND DIRECTION FROM NEAREST TOWN OR POST OFFICE*

3 miles west of Navajo City, NM

15. DISTANCE FROM PROPOSED*

LOCATION TO NEAREST
PROPERTY OR LEASE LINE, FT.
(Also to nearest drlg. unit line, if any)

1785'

16. NO. OF ACRES IN LEASE

unit

18. DISTANCE FROM PROPOSED LOCATION*

TO NEAREST WELL, DRILLING, COMPLETED,
OR APPLIED FOR, ON THIS LEASE, FT.

2100'

19. PROPOSED DEPTH

8035'

17. NO. OF ACRES ASSIGNED
TO THIS WELL

w/320.00

20. ROTARY OR CABLE TOOLS

Rotary

21. ELEVATIONS (Show whether DF, RT, GR, etc.)

6765'GL

22. APPROX. DATE WORK WILL START*

23.

PROPOSED CASING AND CEMENTING PROGRAM

SIZE OF HOLE	SIZE OF CASING	WEIGHT PER FOOT	SETTING DEPTH	QUANTITY OF CEMENT
17 1/2"	13 3/8"	48.0#	200'	278 cu.ft.circ. to surface
12 1/4"	9 5/8"	40.0#	3900'	604 cu.ft.to cover Ojo Alamo
8 3/4"	7"	23.0#	3750-6335'	660 cu.ft.to circ. liner
6 1/4"	4 1/2"	11.6#	6185-8035'	325 cu.ft.to circ. liner

Selectively perforate and sandwater fracture the Mesa Verde and Dakota formation.

A 3000 psi WP and 6000 psi test double gate preventer equipped with blind and pipe rams will be used for blow out prevention on this well.

This gas is dedicated.

The W/2 of Section 22 is dedicated to this well.

IN ABOVE SPACE DESCRIBE PROPOSED PROGRAM: If proposal is to deepen or plug back, give data on present productive zone and proposed new productive zone. If proposal is to drill or deepen directionally, give pertinent data on subsurface locations and measured and true vertical depths. Give blowout preventer program, if any.

24.

SIGNED

A. G. Suarez

TITLE

Drilling Clerk

DATE

12-3-79

(This space for Federal or State office use)

PERMIT NO.

APPROVAL DATE

APPROVED BY

TITLE

DATE

CONDITIONS OF APPROVAL, IF ANY:

*See Instructions On Reverse Side

DEC 10 1979

GEOLOGICAL SURVEY
BO, CCLD.

OIL CONSERVATION DIVISION

STATE OF NEW MEXICO
ENERGY AND MINERALS DEPARTMENTP. O. BOX 2088
SANTA FE, NEW MEXICO 87501Form C-102
Revised 10-1-78

All distances must be from the outer boundaries of the Section.

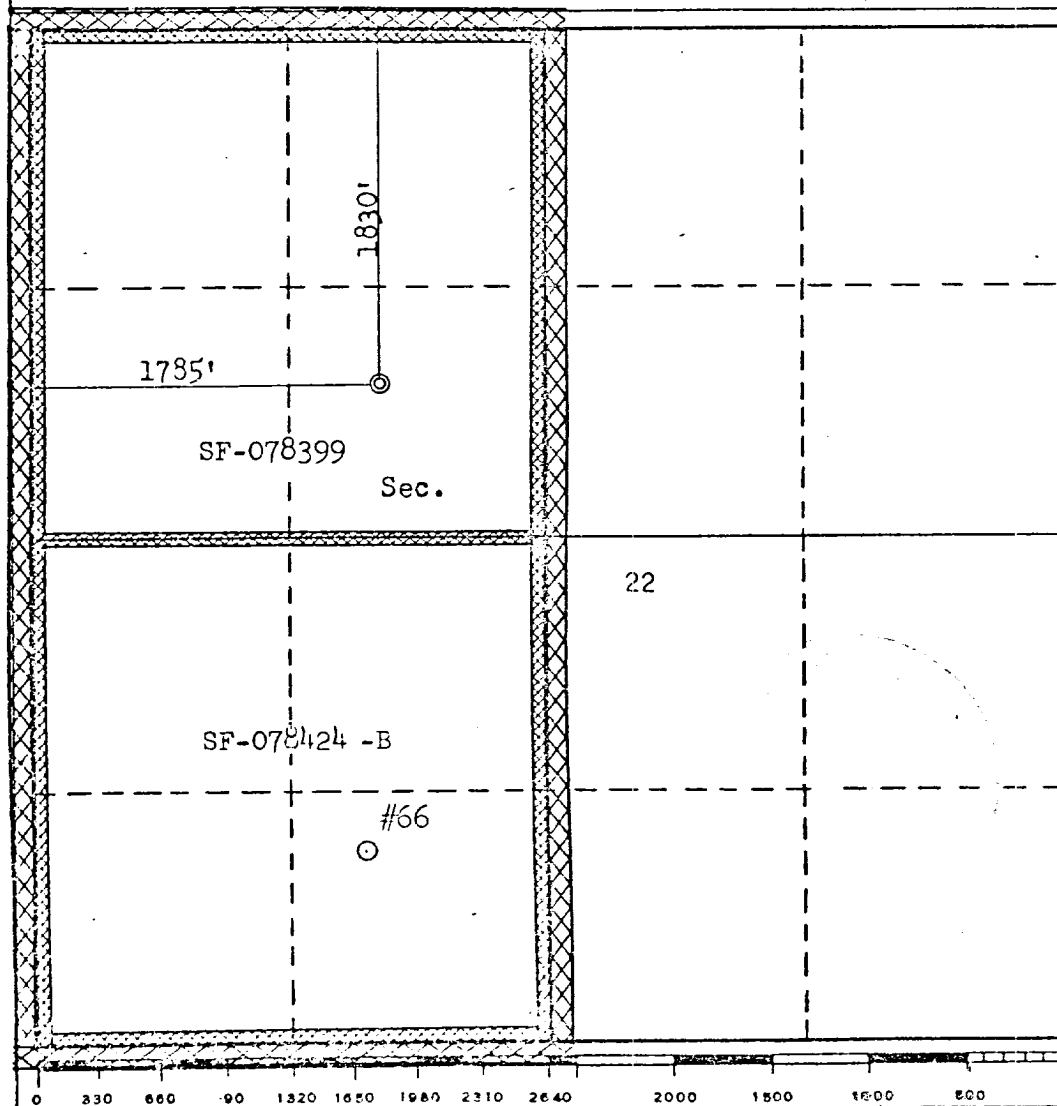
Operator EL PASO NATURAL GAS COMPANY			Lease SAN JUAN 29-7 UNIT (SF-078399)		Well No. 66A
Unit Letter F	Section 22	Township 29N	Range 7W	County Rio Arriba	
Actual Footage Location of Well: 1830 feet from the North line and 1785 feet from the West line					
Ground Level Elev. 6765	Producing Formation MESA VERDE - DAKOTA		Pool BLANCO MESA VERDE BASIN DAKOTA		Dedicated Acreage: 320.0 & 320.0 Acres

1. Outline the acreage dedicated to the subject well by colored pencil or hachure marks on the plat below.
2. If more than one lease is dedicated to the well, outline each and identify the ownership thereof (both as to working interest and royalty).
3. If more than one lease of different ownership is dedicated to the well, have the interests of all owners been consolidated by communitization, unitization, force-pooling, etc?

☐ Yes ☐ No If answer is "yes," type of consolidation Unitization

If answer is "no," list the owners and tract descriptions which have actually been consolidated. (Use reverse side of this form if necessary.)

No allowable will be assigned to the well until all interests have been consolidated (by communitization, unitization, forced-pooling, or otherwise) or until a non-standard unit, eliminating such interests, has been approved by the Commission.



CERTIFICATION

I hereby certify that the information contained herein is true and complete to the best of my knowledge and belief.

A. J. Brisco

Name Drilling Clerk

Position El Paso Natural Gas Co

Company December 3, 1979

Date

I hereby certify that the well location shown on this plat was plotted from field notes of actual surveys made by me or under my supervision, and that the same is true and correct to the best of my knowledge and belief.

Date Surveyed

August 6, 1979

Registered Professional Engineer and/or Land Surveyor

Frank B. Karr Jr.

Certificate No.

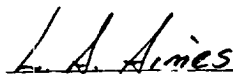
3950

Multi-Point Surface Use Plan

San Juan 29-7 Unit #66A

1. Existing Road - Please refer to Map No. 1 which shows the existing roads. New roads which will be required have been marked on this map. All existing and new roads will be properly maintained during the duration of this project.
2. Planned Access Roads - Please refer to Map No. 1. The grade of the access roads will be consistent with that of the local terrain. The road surface will not exceed twenty feet (20') in width. Upon completion of the project, the access road will be adequately drained to control soil erosion. Drainage facilities may include ditches, water bars, culverts or any other measure deemed necessary by trained Company personnel to insure proper drainage. Gates and/or cattleguards will be installed if necessary.
3. Location of Existing Wells - Please refer to Map No. 2.
4. Location of Tank Batteries, Production Facilities, and Production Gathering and Service Lines - Please refer to Maps No. 1 and No. 2. Map No. 2 shows the existing gas gathering lines. Map No. 1 shows the existing roads and new proposed access roads. All known production facilities are shown on these two maps.
5. Location and Type of Water Supply - Water for the proposed project will be obtained from 29-7 Water Well.
6. Source of Construction Materials - No additional materials will be required to build either the access road or the proposed location.
7. Methods of Handling Waste Materials - All garbage and trash materials will be put into a burn pit shown on the attached Location Plat No. 1. When clean-up operations are begun on the proposed project, the burn pit with its refuse will be buried to a depth of at least three feet (3'). A latrine, the location of which is also shown on Plat No. 1,

7. cont'd. will be provided for human waste. If large amounts of liquids are left in the reserve pit after completion of the project, the pit will be fenced until the liquids have had adequate time to dry. The location clean-up will not take place until such time as the reserve pit can be properly covered over to prevent run-off from carrying any of these materials into the watershed. No earthen pit will be located on natural drainages; all earthen pits will be so constructed as to prevent leakage from occurring.
8. Ancillary Facilities - No camps or airstrips will be associated with this project.
9. Wellsite Layout - Please refer to the attached Plat No. 1.
10. Plans for Restoration of the Surface - After completion of the proposed project, the location will be cleaned and leveled. The location will be left in such a condition that will enable reseeding operations to be carried out. Seed mixture as designated by the responsible government agency will be used. The reseeding operation will be performed during the time period set forth by the regulatory body. The location production equipment will be painted as designated by the responsible government agency.
11. Other Information - The terrain is rolling hills with cedar and pinon growing. Deer and horses are occasionally seen on the proposed project site.
12. Operator's Representative - W.D. Dawson, PO Box 990, Farmington, NM
13. Certification - I hereby certify that I, or persons under my direct supervision, have inspected the proposed drillsite and access route; that I am familiar with the conditions which presently exist; that the statements made in this plan are, to the best of my knowledge, true and correct; and that the work associated with the operations proposed herein will be performed by El Paso Natural Gas Company and its contractors and sub-contractors in conformity with this plan and the terms and conditions under which it is approved.



L. A. Aimes
Project Drilling Engineer

Operations Plan
San Juan 29-7 Unit #66A

I. Location: 1830'N, 1785'W, Section 22, T-29-N, R-7-W, Rio Arriba County, NM

Field: Blanco Mesa Verde & Basin Dakota

Elevation: 6765'

II. Geology:

A. Formation Tops:	Surface	San Jose	Menefee	5425'
	Ojo Alamo	2625'	Point Lookout	5735'
	Kirtland	2700'	Gallup	6900'
	Fruitland	3365'	Greenhorn	7715'
	Pic.Cliffs	3590'	Graneros	7760'
	Lewis	3700'	Dakota	7900'
	Mesa Verde	5285'	Total Depth	8035'

B. Logging Program: GR-Ind. and GR-Density at Total Depth.

C. Coring Program: none

D. Natural Gauges: 5275', 5415', 5735', 6900', 7760', 7900' and at Total Depth. Also gauge any noticeable increase in gas. Record all gauges in daily drilling report and on morning report.

III. Drilling:

A. Mud Program: mud from surface to 3900'. Gas from intermediate casing to Total Depth.

IV. Materials:

A. Casing Program:	<u>Hole Size</u>	<u>Depth</u>	<u>Csg.Size</u>	<u>Wt.&Grade</u>
	17 1/2"	200'	13 3/8"	48.0# H-40
	12 1/4"	3900'	9 5/8"	40.0# N-80
	8 3/4"	3750-6335'	7"	23.0# N-80
	6 1/4"	6185-8035'	4 1/2"	11.6# K-55

B. Float Equipment: 13 3/8" surface casing - guide shoe.

9 5/8" intermediate casing - guide shoe and differential automatic fill up float collar. Five stabilizers, one each on every other joint above shoe. Run float collar two joints above shoe.

7" liner - 7" liner hanger with neoprene packoff. Geyser shoe and flapper type float collar. Four centralizers, one each on every other joint above shoe.

4 1/2" liner - 4 1/2" liner hanger with neoprene packoff. Geyser shoe and flapper type float collar.

Operations Plan - San Juan 29-7 Unit #66A

C. Tubing: 8035' of 2 3/8", 4.7#, J-55 EUE 8rd tubing open ended on bottom with common pump seating nipple and pump out plug one joint above bottom.

6335' of 1 1/2", 2.9#, J-55 EUE 10rd tubing with a perf sub and common pump seating nipple one joint above bottom. Bottom joint to be bull plugged.

D. Wellhead Equipment: 12" 3000 x 13 3/8" casing head. 12" 3000 x 10" 3000 dual xmas tree.

V. Cementing:

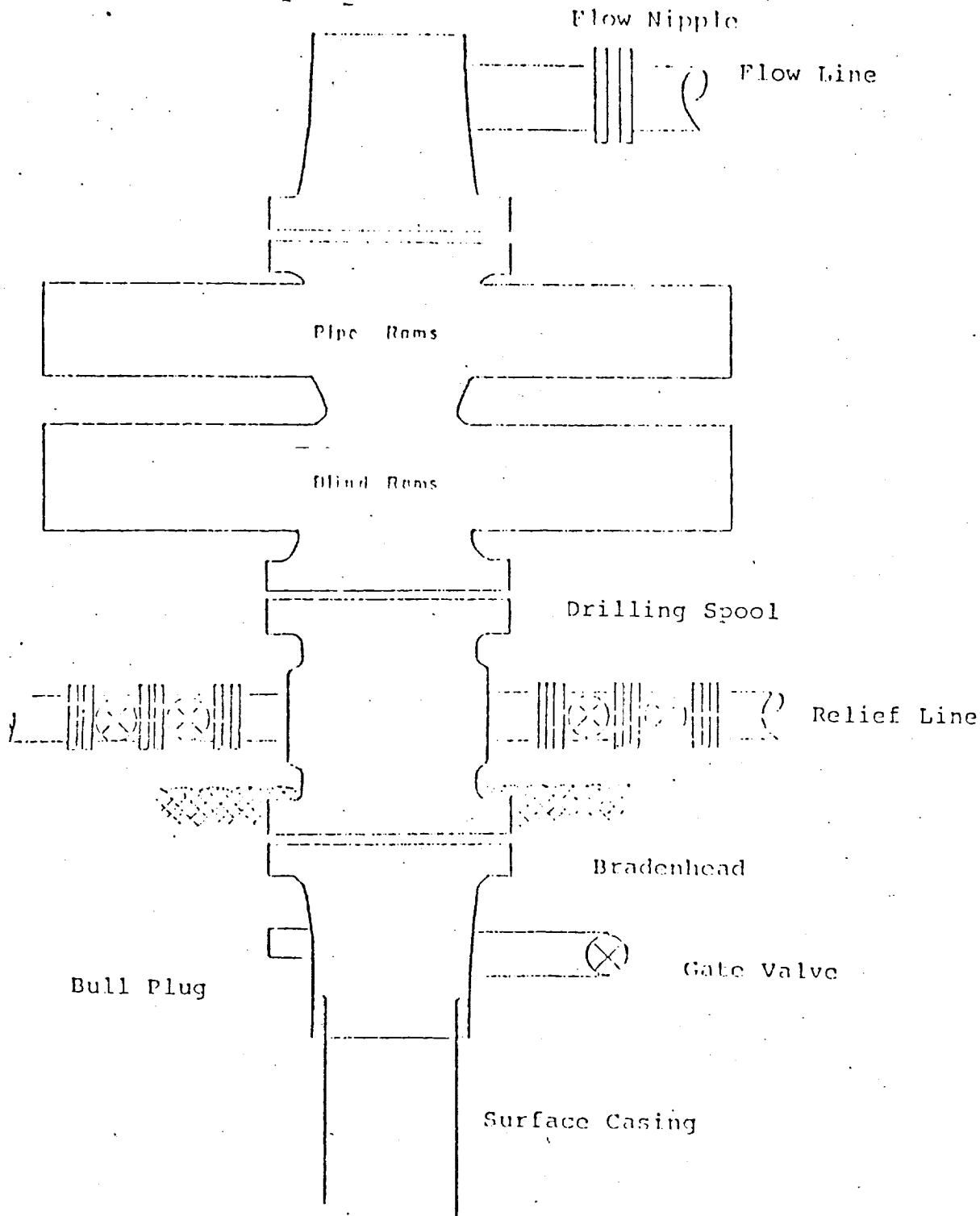
13 3/8" surface casing - use 236 sks. of Class "B" cement with 1/4# gel-flake per sack and 3% calcium chloride (278 cu.ft. of slurry, 100% excess to circulate to surface). WOC 12 hours. Test casing to 600#/30 minutes.

9 5/8" intermediate casing - use 300 sks. 65/35 Class "B" Poz with 6% gel, 2% calcium chloride and 8.3 gallons water per sack followed by 100 sks. Class "B" neat with 2% calcium chloride (604 cu.ft. of slurry, 50% excess to cover Ojo Alamo). Run temperature survey at 8 hours. WOC 12 hours. Test casing to 1200#/30 minutes.

7" liner - precede cement with 30 bbls. gel water (3 sks. gel). Cement with 475 sks. 50/50 Class "B" Poz with 2% gel, 6.15# gilsonite, 1/4# flocele and 0.6% Halad-9 (or equivalent fluid loss additive) (660 cu.ft. of slurry, 70% excess to circulate liner). WOC 12 hours. Test casing to 1200#/30 minutes.

4 1/2" liner - precede cement with 40 bbls. gel water (4 sks. gel). Cement with 95 sks. Class "B" cement with 8% gel, 1/4 cu.ft. fine gilsonite per sack and 0.4% HR-7 followed by 100 sks. Class "B" cement with 1/4# fine tuf-plug per sack and 0.4% HR-7 (325 cu.ft. of slurry, 70% excess to fill to circulate liner). WOC 18 hours.

Typical B.O.P. Installation
for Dakota Well



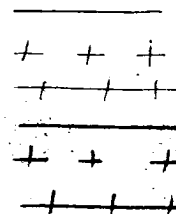
Series 900 Double Gate BOP, rated
at 3000 psi Working Pressure

When gas drilling operations begin a Shaffer type
50 or equivalent rotating head is installed on top of
the flow nipple and the flow line is converted into
a blowie line.

T.
28
N



PROPOSED ROAD & PIPELINE



El Paso Natural Gas Company
San Juan 29-7 Unit #66A
NW 22-29-7

R-7-W

T
29
N

