

UNITED STATES
DEPARTMENT OF THE INTERIOR
BUREAU OF LAND MANAGEMENT

APPLICATION FOR PERMIT TO DRILL, DEEPEN, OR PLUG BACK

2001 APR -2 AM 8:44

1a. Type of Work
DRILL

5. Lease Number
SF-078399
Unit Reporting Number

1b. Type of Well
GAS

6. If Indian, All. or Tribe

2. Operator
BURLINGTON RESOURCES Oil & Gas Company

7. Unit Agreement Name
San Juan 29-7 Unit

3. Address & Phone No. of Operator
PO Box 4289, Farmington, NM 87401
(505) 326-9700

8. Farm or Lease Name
San Juan 29-7 Unit
9. Well Number
177

4. Location of Well
1475' FNL, 1940' FEL
Latitude 36° 42.9, Longitude 107° 33.4

10. Field, Pool, Wildcat
Blanco Pictured Cliffs
11. Sec., Twn, Rge, Mer. (NMPM)
67 Sec. 22, T-29-N, R-7-W
API # 30-039-26723

14. Distance in Miles from Nearest Town
10 miles from Navajo City

12. County
Rio Arriba

13. State
NM

15. Distance from Proposed Location to Nearest Property or Lease Line
1475'

16. Acres in Lease

17. Acres Assigned to Well
160

18. Distance from Proposed Location to Nearest Well, Drig, Compl, or Applied for on this Lease
485'

19. Proposed Depth
3870'

20. Rotary or Cable Tools
Rotary

21. Elevations (DF, FT, GR, Etc.)
6772' GR

22. Approx. Date Work will Start

23. Proposed Casing and Cementing Program
See Operations Plan attached

24. Authorized by: [Signature]
Regulatory/Compliance Supervisor

2-15-01
Date

PERMIT NO. _____

APPROVAL DATE 6/8/01

APPROVED BY /s/ Lee Otteri

TITLE _____ DATE _____

Archaeological Report to be submitted

Threatened and Endangered Species Report to be submitted

NOTE: This format is issued in lieu of U.S. BLM Form 3160-3

Title 18 U.S.C. Section 1001, makes it a crime for any person knowingly and willfully to make to any department or agency of the United States any false, fictitious or fraudulent statements or presentations as to any matter within its jurisdiction.

District I
PO Box 1980, Hobbs, NM 88241-1980

District II
PO Drawer DD, Artesia, NM 88211-0719

District III
1000 Rio Brazos Rd., Aztec, NM 87410

District IV
PO Box 2088, Santa Fe, NM 87504-2088

State of New Mexico
Energy, Minerals & Natural Resources Department

OIL CONSERVATION DIVISION
PO Box 2088
Santa Fe, NM 87504-2088

Form C-102
Revised February 21, 1994
Instructions on back
Submit to Appropriate District Office
State Lease - 4 Copies
2001 APR -2 ~~APR -2~~ - 3 Copies

☐ AMENDED REPORT

WELL LOCATION AND ACREAGE DEDICATION PLAT

*API Number 30-039- 26723		*Pool Code 72359	*Pool Name Blanco Pictured Cliffs
*Property Code 7465	*Property Name SAN JUAN 29-7 UNIT		*Well Number 177
*OGRID No. 14538	*Operator Name BURLINGTON RESOURCES OIL & GAS COMPANY		*Elevation 6772'

¹⁰ Surface Location

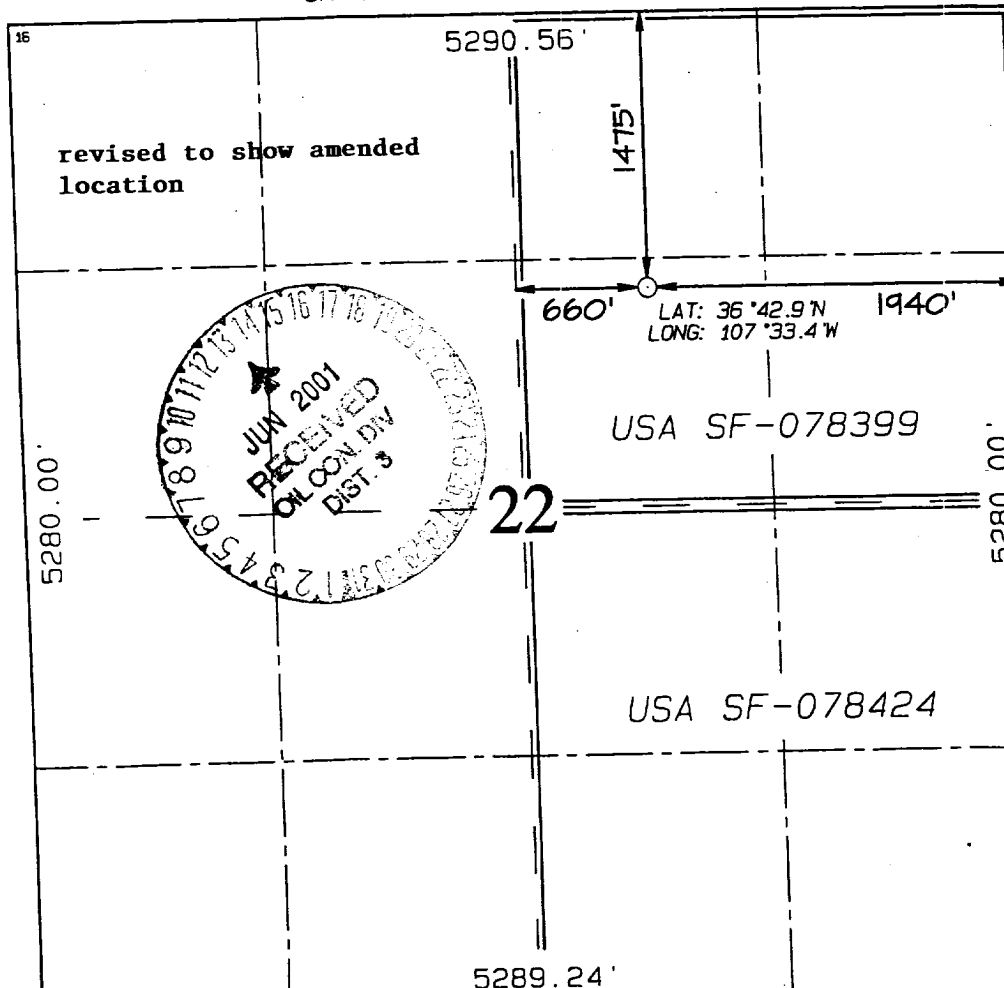
UL or lot no.	Section	Township	Range	Lot Idn	Feet from the	North/South line	Feet from the	East/West line	County
G	22	29N	7W		1475	NORTH	1940	EAST	RIO ARriba

¹¹ Bottom Hole Location If Different From Surface

UL or lot no.	Section	Township	Range	Lot Idn	Feet from the	North/South line	Feet from the	East/West line	County

¹² Dedicated Acres 160	¹³ Joint or Infill	¹⁴ Consolidation Code	¹⁵ Order No. 160 acres for density purposes for the Pictured Cliffs 320 acres for revenue purposes for the Pictured Cliffs
--------------------------------------	-------------------------------	----------------------------------	---

NO ALLOWABLE WILL BE ASSIGNED TO THIS COMPLETION UNTIL ALL INTERESTS HAVE BEEN CONSOLIDATED OR A NON-STANDARD UNIT HAS BEEN APPROVED BY THE DIVISION



¹⁷ OPERATOR CERTIFICATION

I hereby certify that the information contained herein is true and complete to the best of my knowledge and belief.

Peggy Cole
Signature

Peggy Cole
Printed Name

Regulatory Supervisor
Title

Date
2-15-01

¹⁸ SURVEYOR CERTIFICATION

I hereby certify that the well location shown on this plat was plotted from field notes of actual surveys made by me or under my supervision, and that the same is true and correct to the best of my belief.

DECEMBER 29, 2000

Date of Survey

Signature and Seal of Surveyor

NEALE C. EDWARDS
NEW MEXICO
6857
Certificate Number

6857

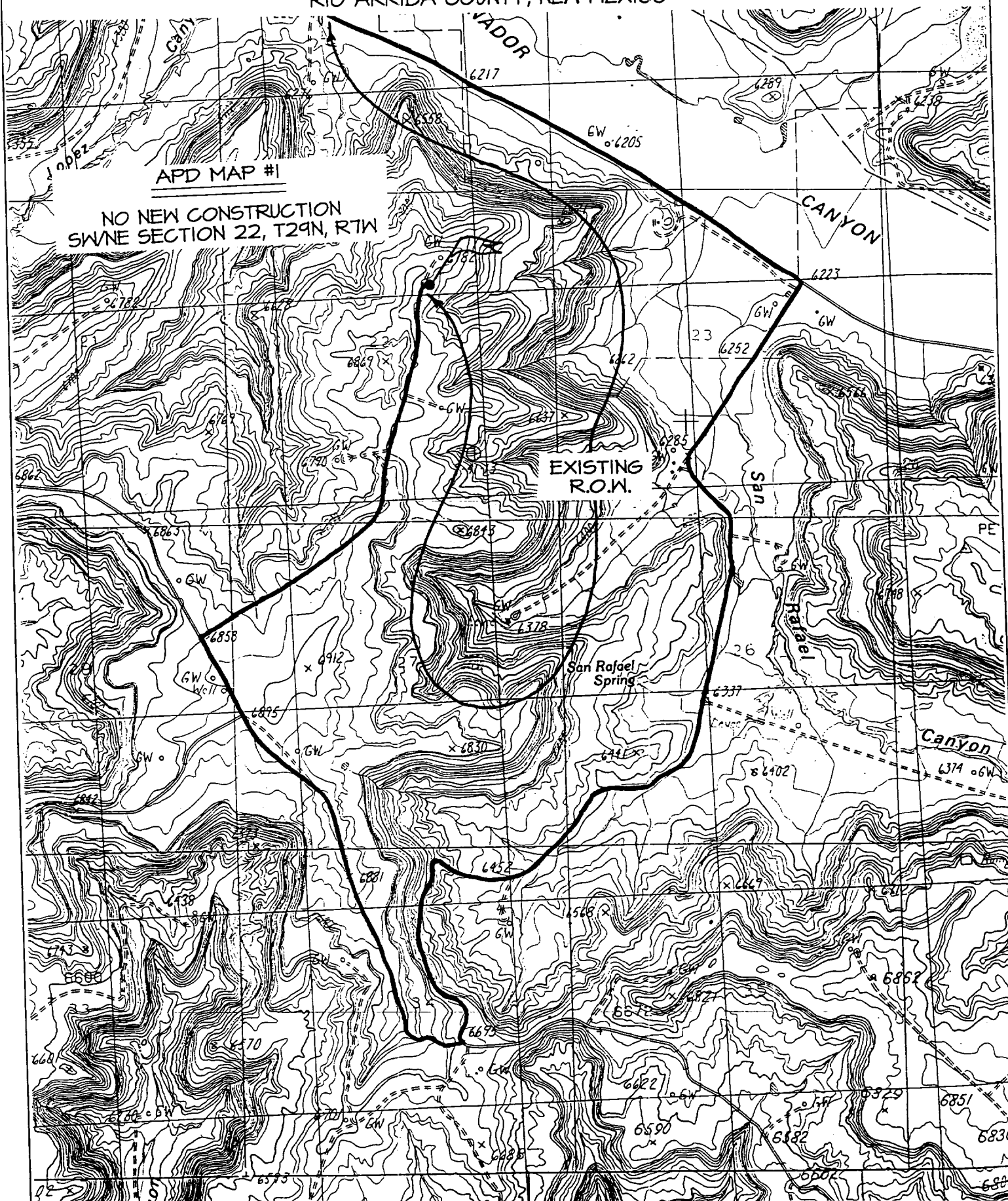
1475' FNL & 1940' FEL, SECTION 22, T29N, R7W, N.M.P.M.
RIO ARriba COUNTY, NEW MEXICO

APD MAP #1

NO NEW CONSTRUCTION
SWNE SECTION 22, T29N, R7W

EXISTING
R.O.W.

**San Rafael
Spring**



OPERATIONS PLAN

Well Name: San Juan 29-7 Unit #177
Location: 1475' FNL, 1940' FEL, Section 22, T-29-N, R-7-W
Rio Arriba County, New Mexico
Latitude 36° 42.9, Longitude 107° 33.4
Formation: Blanco Pictured Cliffs
Elevation: 6772' GL

Formation:	Top	Bottom	Contents
Surface	San Jose	2712'	
Ojo Alamo	2712'	2789'	aquifer
Kirtland	2789'	3304'	gas
Fruitland	3304'	3574'	gas
Pictured Cliffs	3574'	3766'	gas
Lewis marker	3766'		gas
Total Depth	3870'		

Logging Program:

Cased hole - Surface to TD - CBL-CCL-GR
Open hole - CNL-LDT TD to 2780', AIT - Surface to TD

Coring Program: None

Mud Program:

<u>Interval</u>	<u>Type</u>	<u>Weight</u>	<u>Vis.</u>	<u>Fluid Loss</u>
0- 200'	Spud	8.4-9.0	40-50	no control
200-3870'	FW	8.4-9.0	32-45	no control

Casing Program (as listed, equivalent, or better):

<u>Hole Size</u>	<u>Depth Interval</u>	<u>Csg. Size</u>	<u>Wt.</u>	<u>Grade</u>
8 3/4"	0 - 200'	7"	20.0#	J-55
6 1/4"	0 - 3870'	2 7/8"	6.5#	J-55

Float Equipment: 7" surface casing - saw tooth guide shoe.
Centralizers will be run in accordance with Onshore Order #2.

2 7/8" production casing - float shoe on bottom. Three centralizers run every other joint above shoe. Seven centralizers run every 3rd joint to the base of the Ojo Alamo @ 2789'. Two turbolizing type centralizers - one below and one into the base of the Ojo Alamo @ 2789'. Standard centralizers thereafter every fourth joint up to the base of the surface pipe.

Wellhead Equipment: 7" x 2 7/8" 2000 psi screw on independent wellhead.

Cementing:

7" surface casing - cement with 76 sx Class "H" cement with 1/4# flocele/sx and 3% calcium chloride (90 cu.ft. of slurry, 200% excess to circulate to surface). WOC 8 hrs. Test casing to 600 psi for 30 minutes.

2 7/8" production casing - Lead w/459 sx Class "H" w/2% Econolite, 1/2 pps Flocele, 10 pps Gilsonite and 10 pps blended silicate. Tail w/90 sx 50/50 Class "H" Poz w/2% gel, 1/4 pps Flocele, 5 pps gilsonite and 2% calcium chloride (1300 cu.ft. of slurry, 100% excess to circulate to surface). WOC 8 hrs.

Note: If open hole logs are run, cement volumes will be based on 25% excess over caliper volumes.

San Juan 29-7 Unit #177

BOP and tests:

Surface to TD - 11" 2000 psi (minimum double gate BOP stack (Reference Figure #1). Prior to drilling out surface casing, test rams to 600 psi/30 min.

Completion - 7 1/16" 2000 psi (minimum) double gate BOP stack (Reference Figure #2). Prior to completion operations, test rams and casing to 2000 psi/15 min.

From surface to TD - choke manifold (Reference Figure #3).

Pipe rams will be actuated to least once each day and blind rams actuated once each trip to test proper functioning. An upper Kelly cock valve with handle and drill string safety valves to fit each drill string will be maintained and available on the rig floor.

Additional information:

- * The Pictured Cliffs formation will be completed.
- * Anticipated pore pressure for the Pictured Cliffs is 500 psi.
- * This gas is dedicated.
- * The east half of section 22 is dedicated to the Pictured Cliffs.


Drilling Engineer

2/20/01
Date