

SJ Basin Well Work Procedure

Well Name: Florance #30
Version: Final
Date: September 5, 2002
Budget: DRA
Repair Type: T&A
SAP Number: X4-004JS (DRA)

Objective: Plugback MV completion, T&A wellbore

Pertinent Information:

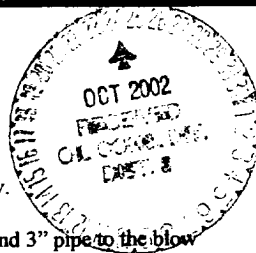
Location:	T29N-R8W-Sec1	API #:	30-045-08638
County:	San Juan	FlacWell:	97865401
State:	New Mexico	Meter #:	34084
Horizon:	Pictured Cliffs	Engr:	James Dean
		ph	(218) 366-5723
		fax	(281) 366-7099

Economic Information:

WI: 50%
NRI: 34.8%
Cost: \$28m gross (includes \$20m for contingency P&A)

Procedure:

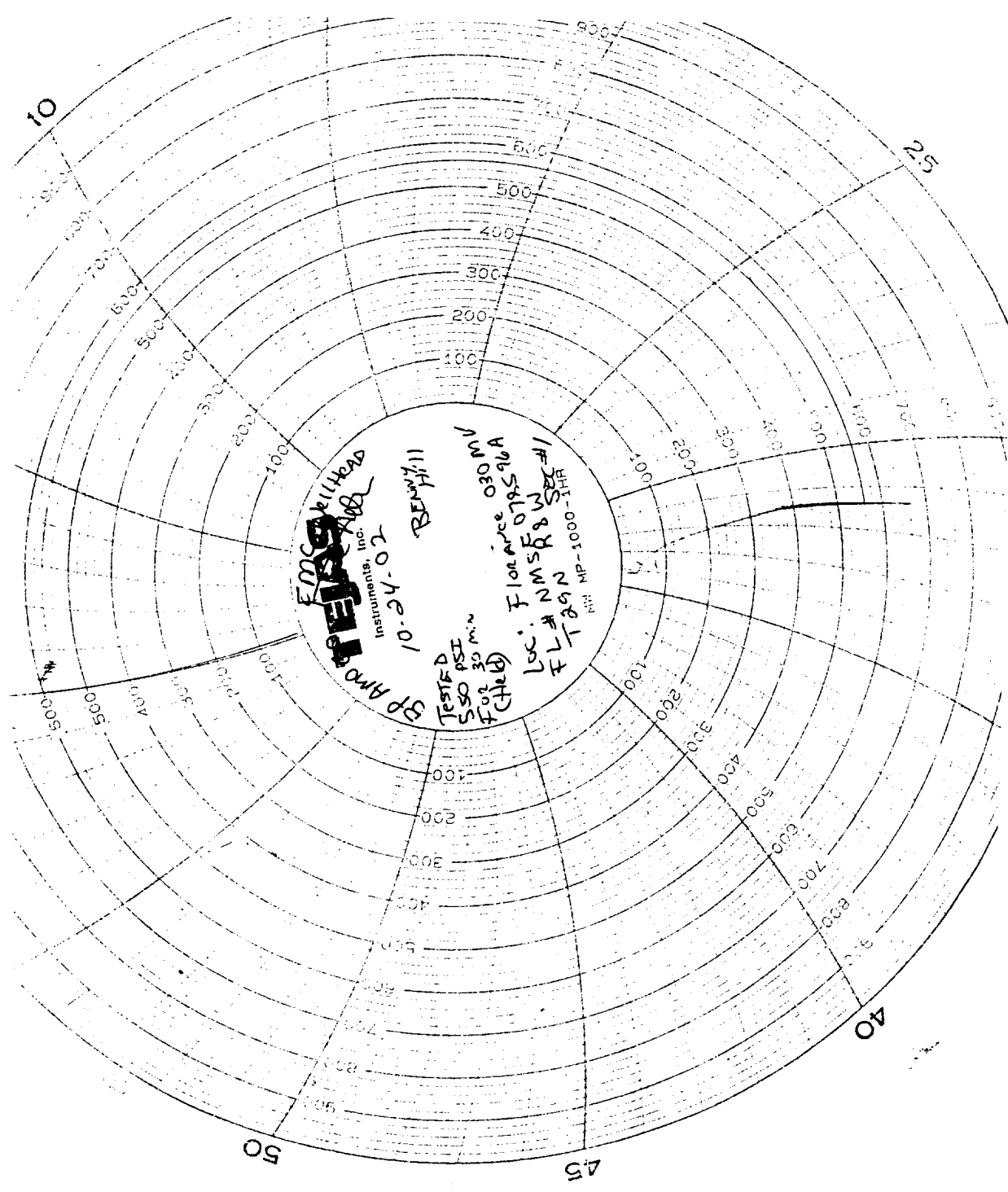
1. Check anchors. MIRU workover rig.
2. Check and record tubing, casing, and bradenhead pressures.
3. Blow down wellhead. Kill with 2% KCL water ONLY if necessary.
4. Nipple down WH. NU BOPs and diversion spool with 3" outlets and 3" pipe to the blow tank. Pressure test BOPs to 500 psi.
5. TOH with 2-3/8" production tubing currently set at 5355'.
6. TIH to RBP at 7306'. Spot 100' cement plug (9 cu ft) above RBP from 7206' - 7306'. TOH.
7. TIH with tubing-set 4-1/2" CIBP. Set CIBP at 6270'. Spot 150' cement plug (13.5 cu ft) above the CIBP from 6120' - 6270' across the Gallup formation. TOH.
8. TIH with tubing-set 4-1/2" CIBP. Set CIBP at 4750'. Spot 150' cement plug (13.5 cu ft) above the CIBP from 4600' - 4750' above the Cliffhouse interval.



9. Load hole with inhibited 2% KCL. TOH. Pressure test casing to 500 psi.

Note: If casing fails the pressure test, proceed with the contingency P&A procedure detailed below.

10. ND BOP's. NU WH. Leave wellbore in T&A'd status.



EMC Bellhead
Instruments, Inc.

10-24-02

BEH/11

TESTED
550 PSI
FOR 30 MIN
(Choked)
Loc: Florence 030 MW
FL# NMSFBW
FLTAGN
MP-1000-1HR