

UNITED STATES
DEPARTMENT OF THE INTERIOR
GEOLOGICAL SURVEY

APPLICATION FOR PERMIT TO DRILL, DEEPEN, OR PLUG BACK

1a. TYPE OF WORK

DRILL ☒DEEPEN ☐PLUG BACK ☐

b. TYPE OF WELL

OIL
WELL ☐GAS
WELL ☒

OTHER

SINGLE
ZONE ☐MULTIPLE
ZONE ☐

2. NAME OF OPERATOR

Lively Exploration Company

3. ADDRESS OF OPERATOR

Box 234, Farmington, New Mexico 87401

4. LOCATION OF WELL (Report location clearly and in accordance with any State requirements.)*

At surface

1180' FSL - 1450' FWL

At proposed prod. zone

14. DISTANCE IN MILES AND DIRECTION FROM NEAREST TOWN OR POST OFFICE*

14 miles east Blanco, New Mexico

15. DISTANCE FROM PROPOSED*

LOCATION TO NEAREST

PROPERTY OR LEASE LINE, FT.

(Also to nearest drlg. unit line, if any) 1180'

16. NO. OF ACRES IN LEASE

17. NO. OF ACRES ASSIGNED
TO THIS WELL

320

18. DISTANCE FROM PROPOSED LOCATION*

TO NEAREST WELL, DRILLING, COMPLETED,
OR APPLIED FOR, ON THIS LEASE, FT.

500' approx.

19. PROPOSED DEPTH

7575'

20. ROTARY OR CABLE TOOLS

Rotary

21. ELEVATIONS (Show whether DF, RT, GR, etc.)

6325' GR

22. APPROX. DATE WORK WILL START*

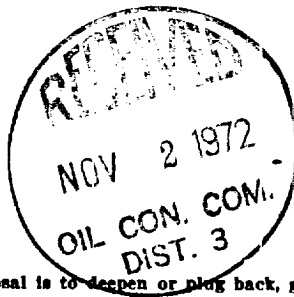
12-15-72

23.

PROPOSED CASING AND CEMENTING PROGRAM

SIZE OF HOLE	SIZE OF CASING	WEIGHT PER FOOT	SETTING DEPTH	QUANTITY OF CEMENT
13 3/4	9 5/8	32.30	300	200 cu. ft.
8 3/4	7	20	3375	600 cu. ft.
6 1/4	4 1/2	10.5	7575	600 cu. ft.

Plan to drill with water or minimum mud to 3375', set 7" intermediate csg and cement with 600 cu. ft. cement. Drill 6 1/4" hole with gas to T.D. to test Dakota formation. Run 4 1/2" production csg thru Dakota, selective perforate and sand water frac, clean out, run 1 1/4" tbg and complete well.



IN ABOVE SPACE DESCRIBE PROPOSED PROGRAM: If proposal is to deepen or plug back, give data on present productive zone and proposed new productive zone. If proposal is to drill or deepen directionally, give pertinent data on subsurface locations and measured and true vertical depths. Give blowout preventer program, if any.

24.

Original signed by T. A. Dugan

SIGNED

TITLE

Engineer

DATE

10-30-72

(This space for Federal or State office use)

PERMIT NO.

APPROVAL DATE

APPROVED BY

TITLE

DATE

CONDITIONS OF APPROVAL, IF ANY:

**NEW MEXICO OIL CONSERVATION COMMISSION
WELL LOCATION AND ACERAGE DEDICATION PLAT**

All distances must be from the outer boundaries of the Section

Operator LIVELY EXPLORATION COMPANY			Lease Lively		Well No. 8
Unit Letter N	Section 12	Township 29 North	Range 8 West	County San Juan	
Actual Footage Location of Well: 1180 feet from the South line and 1450 feet from the West line					
Ground Level Elev. 6325	Producing Formation Dakota	Pool Basin	Dedicated Acreage: 320 Acres		

1. Outline the acreage dedicated to the subject well by colored pencil or hatchure marks on the plat below.
2. If more than one lease is dedicated to the well, outline each and identify the ownership thereof (both as to working interest and royalty),
3. If more than one lease of different ownership is dedicated to the well, have the interests of all owners been consolidated by communization, unitization, force-pooling, etc?
☐ Yes ☐ No If answer is "yes," type of consolidation _____

If answer is "no," list the owners and tract descriptions which have actually consolidated. (Use reverse side of this form if necessary.) _____

No allowable will be assigned to the well until all interests have been consolidated (by communization, unitization, forced-pooling, or otherwise) or until a non standard unit, eliminating such interests, has been approved by the Commission.

CERTIFICATION

I hereby certify that the information contained herein is true and complete to the best of my knowledge and belief.

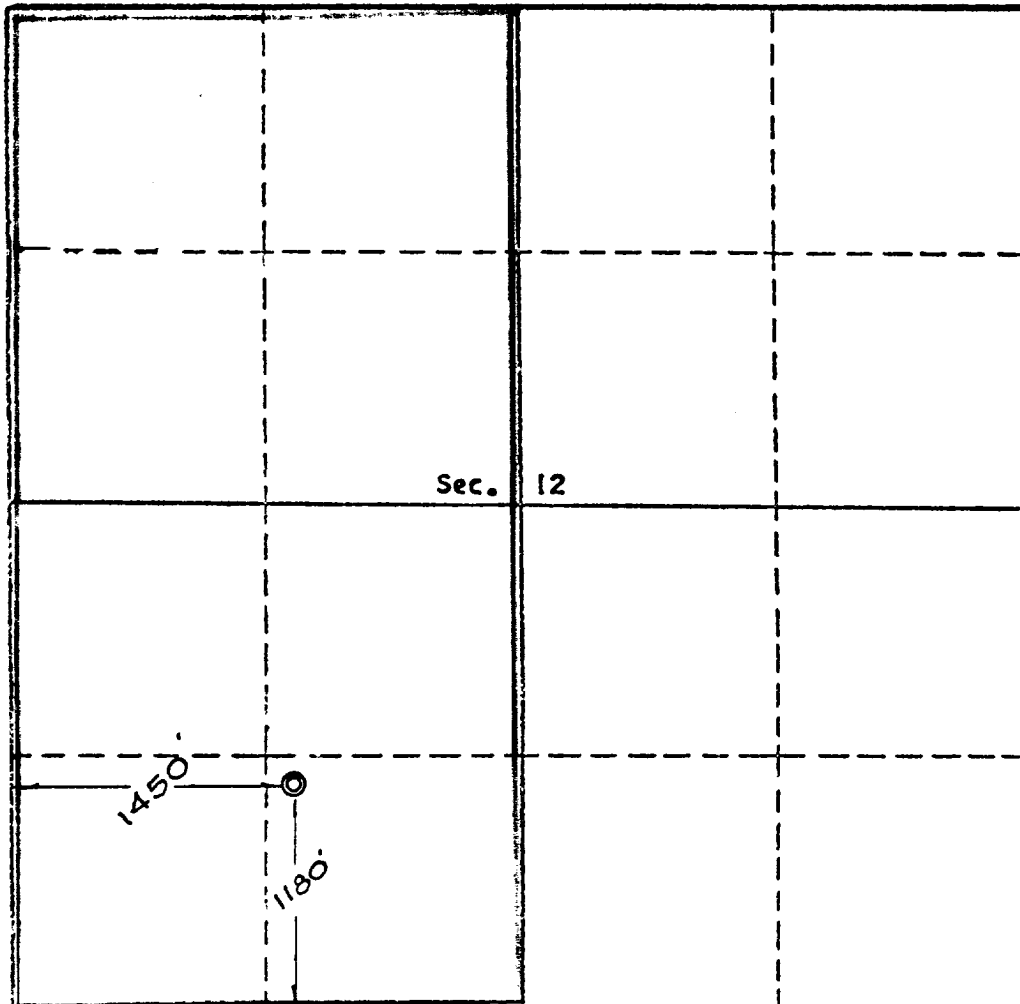
Original signed by T. A. Dugan

Name _____
 Thomas A. Dugan
 Position _____
 Engineer
 Company _____
 Lively Exploration Company
 Date _____
 10-30-72

I hereby certify that the information shown on this plat is true and correct to the best of my knowledge and belief.

REGISTERED LAND SURVEYOR
 STATE OF NEW MEXICO
 Reg. No. 3602
 Ernest V. Echohawk
 Date Surveyed **October 13, 1972**
 Registered Professional Engineer
 and/or Land Surveyor

E. V. Echohawk
 Certificate No. **3602**
E. V. Echohawk LS



Scale, 1 inch = 1,000 feet