

UNITED STATES  
DEPARTMENT OF THE INTERIOR  
GEOLOGICAL SURVEY

30-045-21212

5. LEASE DESIGNATION AND SERIAL NO.

6. IF INDIAN, ALLOTTEE OR TRIBE NAME

7. UNIT AGREEMENT NAME

8. FARM OR LEASE NAME

Dana

9. WELL NO.

3

10. FIELD AND POOL, OR WILDCAT

Basin Dakota

11. SEC., T., R., M., OR B.L.  
AND SURVEY OR AREA

Sec. 10, T29N, R3W

12. COUNTY OR PARISH

San Juan

New Mexico

17. NO. OF ACRES ASSIGNED  
TO THIS WELL

320

20. ROTARY OR CABLE TOOLS

Rotary

22. APPROX. DATE WORK WILL START\*

Upon Approval

## APPLICATION FOR PERMIT TO DRILL, DEEPEN, OR PLUG BACK

1a. TYPE OF WORK

DRILL ☒DEEPEN ☐PLUG BACK ☐

b. TYPE OF WELL

OIL  
WELL ☐GAS  
WELL ☒

OTHER

SINGLE  
ZONE ☒MULTIPLE  
ZONE ☐

2. NAME OF OPERATOR

Tenneco Oil Company

3. ADDRESS OF OPERATOR

Suite 1200 Lincoln Tower Bldg, Denver, Colorado

4. LOCATION OF WELL (Report location clearly and in accordance with any State requirements.\*)

At surface

1120' F/SL and 1160' F/EL

At proposed prod. zone

14. DISTANCE IN MILES AND DIRECTION FROM NEAREST TOWN OR POST OFFICE\*

15. DISTANCE FROM PROPOSED\*

LOCATION TO NEAREST  
PROPERTY OR LEASE LINE, FT.  
(Also to nearest drlg. unit line, if any)

16. NO. OF ACRES IN LEASE

17. NO. OF ACRES ASSIGNED  
TO THIS WELL18. DISTANCE FROM PROPOSED LOCATION\*  
TO NEAREST WELL, DRILLING, COMPLETED,  
OR APPLIED FOR, ON THIS LEASE, FT.

19. PROPOSED DEPTH

7350

20. ROTARY OR CABLE TOOLS

Rotary

21. ELEVATIONS (Show whether DF, RT, GR, etc.)

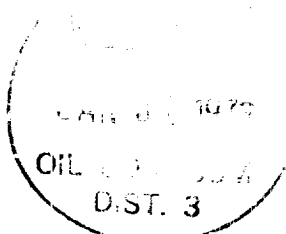
6197.0 GR

23.

## PROPOSED CASING AND CEMENTING PROGRAM

SIZE OF HOLE	SIZE OF CASING	WEIGHT PER FOOT	SETTING DEPTH	QUANTITY OF CEMENT
12-1/4	8-5/8	24	150	Sufficient to circulate
7-7/8	4-1/2	10.5	7350	as directed by U.S.G.S.

Well to be drilled to approximate T.D. of 7350', log and if commercial production is indicated, run 4-1/2" casing to T.D. Cement as directed by U.S.G.S. Perforate casing and treat formation as necessary to establish commercial production. B.O.P. to be tested each 24 hours.



RECEIVED

JAN 30 1973

U. S. GEOLOGICAL SURVEY  
FARMINGTON, N.M.

IN ABOVE SPACE DESCRIBE PROPOSED PROGRAM: If proposal is to deepen or plug back, give data on present productive zone and proposed new productive zone. If proposal is to drill or deepen directionally, give pertinent data on subsurface locations and measured and true vertical depths. Give blowout preventer program, if any.

21.

SIGNED

W L Shaver

TITLE Sr. Production Clerk

DATE 1/25/73

(This space for Federal or State office use)

PERMIT NO.

APPROVAL DATE

APPROVED BY

TITLE

DATE

CONDITIONS OF APPROVAL, IF ANY:

**NEW MEXICO OIL CONSERVATION COMMISSION  
WELL LOCATION AND ACERAGE DEDICATION PLAT**

All distances must be from the outer boundaries of the Section

Operator <b>TEENECO OIL COMPANY</b>			Lease <b>DATA</b>		Well No <b>3</b>
Unit Letter <b>P</b>	Section <b>10</b>	Township <b>22 NORTH</b>	Range <b>8 WEST</b>	County <b>SAN JUAN</b>	
Actual Footage Location of Well: <b>1120</b> feet from the <b>SOUTH</b> line and <b>1160</b> feet from the <b>EAST</b> line					
Ground Level Elev. <b>6197.0</b>	Producing Formation <b>Dakota</b>	Basin <b>Dakota</b>		Dedicated Acreage <b>320</b>	Acres

1. Outline the acreage dedicated to the subject well by colored pencil or hachure marks on the plat below.
2. If more than one lease is dedicated to the well, outline each and identify the ownership thereof (both as to working interest and royalty).
3. If more than one lease of different ownership is dedicated to the well, have the interests of all owners been consolidated by communization, unitization, force-pooling, etc?

☐ Yes    ☐ No    If answer is "yes," type of consolidation \_\_\_\_\_

If answer is "no," list the owners and tract descriptions which have actually consolidated. (Use reverse side of this form if necessary) \_\_\_\_\_

No allowable will be assigned to the well until all interests have been consolidated (by communization, unitization, forced-pooling, or otherwise) or until a non standard unit, eliminating such interests, has been approved by the Commission.

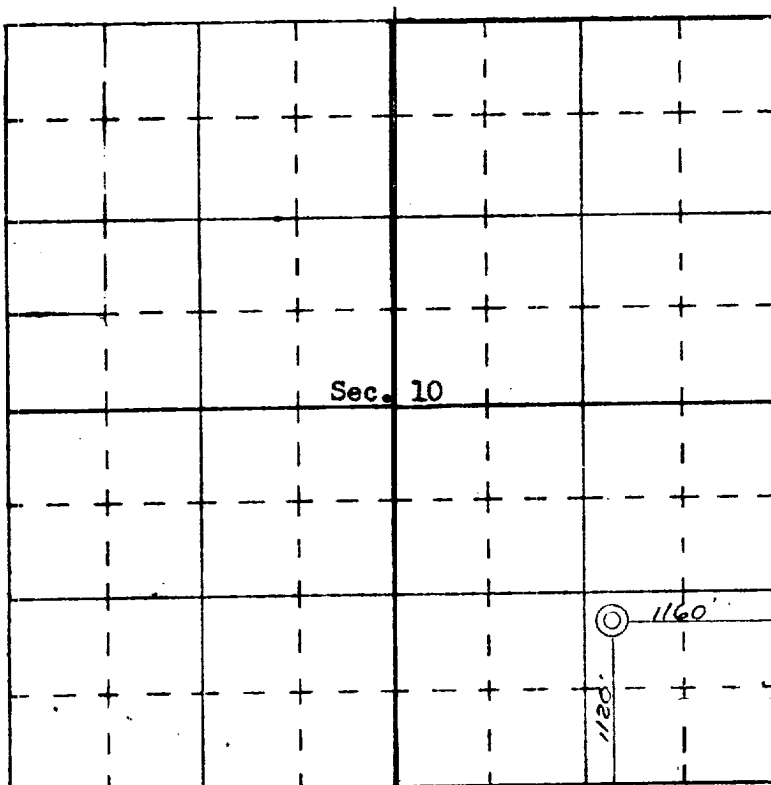
**CERTIFICATION**

I hereby certify that the information contained herein is true and complete to the best of my knowledge and belief.

*W L Shaver*  
 Name  
**W. L. Shaver**  
 Position  
**Sr. Production Clerk**  
 Company  
**Tenneco Oil Company**  
 Date  
**1/25/73**

I hereby certify that the well location shown on this plat was plotted from field notes of actual surveys made by me or under my supervision, and that the same is true and correct to the best of my knowledge and belief.

**16**  
 Date Surveyed  
**January 1972**  
 Registered Professional Engineer  
 and/or Land Surveyor  
**JAMES P. LEESE**  
**1463**  
 Certificate No.



SCALE—4 INCHES EQUALS 1 MILE

**SAN JUAN ENGINEERING COMPANY, FARMINGTON, N. M.**