

5 - USGS

1 - McHugh

1 - El Paso Exploration

1 - File

Form 9-331
Dec. 1973Form Approved.
Budget Bureau No. 42-R1424

**UNITED STATES
DEPARTMENT OF THE INTERIOR
GEOLOGICAL SURVEY**

SUNDRY NOTICES AND REPORTS ON WELLS

(Do not use this form for proposals to drill or to deepen or plug back to a different reservoir. Use Form 9-331-C for such proposals.)

1. oil ☐ gas ☒ other

2. NAME OF OPERATOR

Jerome P. McHugh

3. ADDRESS OF OPERATOR

P O Box 208, Farmington, NM 87401

4. LOCATION OF WELL (REPORT LOCATION CLEARLY. See space 17 below.)

AT SURFACE: 1100' FSL - 800' FWL

AT TOP PROD. INTERVAL:

AT TOTAL DEPTH:

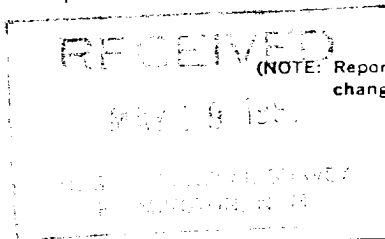
16. CHECK APPROPRIATE BOX TO INDICATE NATURE OF NOTICE, REPORT, OR OTHER DATA

REQUEST FOR APPROVAL TO:

TEST WATER SHUT-OFF ☐
FRACTURE TREAT ☐
SHOOT OR ACIDIZE ☐
REPAIR WELL ☐
PULL OR ALTER CASING ☐
MULTIPLE COMPLETE ☐
CHANGE ZONES ☐
ABANDON* ☐
(other) ☐

SUBSEQUENT REPORT OF:

☒ Completion



(NOTE: Report results of multiple completion or zone change on Form 9-330.)

17. DESCRIBE PROPOSED OR COMPLETED OPERATIONS (Clearly state all pertinent details, and give pertinent dates, including estimated date of starting any proposed work. If well is directionally drilled, give subsurface locations and measured and true vertical depths for all markers and zones pertinent to this work.)*

See reverse for perfs, acid and frac 5-11-81 and tbg. 5-13-81.

Subsurface Safety Valve: Manu. and Type _____ Set @ _____ Ft.

18. I hereby certify that the foregoing is true and correct

SIGNED Thomas A. Bugan TITLE Agent DATE 5-16-81

(This space for Federal or State office use)

APPROVED BY _____ TITLE _____ DATE _____

CONDITIONS OF APPROVAL, IF ANY:

ENCLOSURE

*See Instructions on Reverse Side

h

DAILY REPORT

- 5-9-81 Move in and rig up MTK Inc.
- 5-10-81 Sunday - shut down
- 5-11-81 Rig up Jetronics Inc., run GR-CCL log from 7470'-6200'. Rig up Western Co. and load 7" annulus w/ 53 bbls water, 50# x-cide, and 50# sodium dichromate; pressure test 4½" casing to 4000 psi. Held OK. Rig up Jetronics and perforate Dakota Formation using 3-1/8" hollow carrier dual-fire gun at 7166, 68, 70, 72, 81, 83, 7260, 62, 64, 66, 68, 70, 72; 7326, 28, 30, 32, 34, 68, 70, 72, 7414, 16, 18 - total of 24 holes. Rig up Western Co. and acidize perfs w/ 500 gals 15% HCL and 35 ball sealers. Balled off to 3900 psi. Not complete - 1-2 perfs open. Rig up Jetronics. Run junk basket. Retrieve 35 balls w/ 20 hits. Fracture Dakota Formation using Mini-Max III-30 w/ 2% hydrocarbon for fluid as follows:
- 15,000 gals fluid pad
 - 10,000 gals fluid w/ 1 ppg 20-40 sand
 - 10,000 gals fluid w/ 2 ppg 20-40 sand
 - 10,000 gals fluid w/ 3 ppg 20-40 sand
 - 10,000 gals fluid w/ 4 ppg 20-40 sand
 - 5,000 gals fluid w/ 4 ppg 10-20 sand
 - 4,830 gals slick water flush
- Total fluid: 60,000 gals MiniMax III-30 w/ 2% hydrocarbon,
___ gals aquaflo, ___ gals x-cide; 4,830 gals slick water
- Total sand: 100,000# 20-4- & 20,000# 10-20
- Treating pressures: Min ± 2200 psi, Max 3650 psi; Ave 3000 psi
Ave. Injection rate - 35 bpm
ISDP ±1800 psi Final shut in after 15 mins. 1200 psi
- Well shut in over night.
- 5-12-81 Pick up tubing. Tag sand at 7175'. 21 perforations plugged. Well dead.
- 5-13-81 Circulate small amount of sand out of hole, then clean out to 7438'. Ran 197 jts. of 1½" OD, 2.4#, V-55, 10 Rd, EUE tubing. T.E. 7301.78' set at 7310' RKB. Rig down.
- 5-14-81 Move in Farmington Well Service rig. Swab 1½" tbg.