

UNITED STATES
DEPARTMENT OF THE INTERIOR
GEOLOGICAL SURVEY

30-045-24983

5. LEASE DESIGNATION AND SERIAL NO.

SF 078416

6. IF INDIAN, ALLOTTEE OR TRIBE NAME

7. UNIT AGREEMENT NAME

8. FARM OR LEASE NAME

Hardie

9. WELL NO.

#1E

10. FIELD AND POOL, OR WILDCAT

Basin Dakota

11. SEC., T., R., M., OR BLK.
AND SURVEY OR AREA

Sec 26 T29N R8W

12. COUNTY OR PARISH 13. STATE

San Juan

NM

APPLICATION FOR PERMIT TO DRILL, DEEPEN, OR PLUG BACK

1a. TYPE OF WORK

DRILL ☒DEEPEN ☐PLUG BACK ☐

b. TYPE OF WELL

OIL
WELL ☐GAS
WELL ☒

OTHER

SINGLE
ZONE ☒MULTIPLE
ZONE ☐

2. NAME OF OPERATOR

Jerome P. McHugh

3. ADDRESS OF OPERATOR

P O Box 208, Farmington, NM 87401

4. LOCATION OF WELL (Report location clearly and in accordance with any State requirements.)

At surface

1520' FSL - 2120' FWL

K At proposed prod. zone

14. DISTANCE IN MILES AND DIRECTION FROM NEAREST TOWN OR POST OFFICE*

10 miles east of Blanco, NM

15. DISTANCE FROM PROPOSED*

LOCATION TO NEAREST
PROPERTY OR LEASE LINE, FT.
(Also to nearest drlg. unit line, if any)

520'

18. DISTANCE FROM PROPOSED LOCATION*
TO NEAREST WELL, DRILLING, COMPLETED,
OR APPLIED FOR, ON THIS LEASE, FT.

1000'

16. NO. OF ACRES IN LEASE

32.440

19. PROPOSED DEPTH

7538'

17. NO. OF ACRES ASSIGNED
TO THIS WELL

w/320

20. ROTARY OR CABLE TOOLS

Rotary

21. ELEVATIONS (Show whether DF, RT, GR, etc.)

6389' GR

DRILLING LOGS AND RECORDS AND
SUBJECT TO COMPLETION OF WELL ATTACHED

22. APPROX. DATE WORK WILL START*

April 30, 1981

23. PROPOSED CASING AND CEMENTING PROGRAM

This action is subject to administrative
review and approval by the District Engineer.

SIZE OF HOLE	SIZE OF CASING	WEIGHT PER FOOT	SETTING DEPTH	QUANTITY OF CEMENT
12-1/4"	9-5/8"	32.3#	200'	150 cu.ft.
8-3/4"	7"	23#	3190'	650 cu.ft.
6-1/4"	4-1/2"	10.5#	7538'	600 cu.ft.

Plan to spud a 12-1/4" hole and drill w/ mud to 200', set 9-5/8" surface csg. cemented to surface. Will then drill an 8-3/4" hole to a depth of 3190' w/ mud and 7" csg. set and cemented to surface. Will drill a 6-1/4" hole w/ gas to TD of 7538'; 4-1/2" csg. will be cemented w/ 600 cu.ft. of cement.

The Dakota formation will then be selectively perforated, fraced, cleaned up after frac, well completed and tbg. run.

GAS DEDICATED.



IN ABOVE SPACE DESCRIBE PROPOSED PROGRAM: If proposal is to deepen or plug back, give data on present productive zone and proposed new productive zone. If proposal is to drill or deepen directionally, give pertinent data on subsurface locations and measured and true vertical depths. Give blowout preventer program, if any.

24.

SIGNED

Jerome P. McHugh Jr.

TITLE

Agent

DATE

3-18-81

(This space for Federal or State office use)

PERMIT NO.

APPROVAL DATE

APPROVED BY

TITLE

CONDITIONS OF APPROVAL, IF ANY:

APPROVED
AS AMENDEDAPR 02 1981
James F. Sims
JAMES F. SIMS
DISTRICT ENGINEER

*See Instructions On Reverse Side

111000

OIL CONSERVATION DIVISION

STATE OF NEW MEXICO
ENERGY AND MINERALS DEPARTMENTP. O. BOX 2088
SANTA FE, NEW MEXICO 87501Form C-102
Revised 10-1-78

All distances must be from the outer boundaries of the Section.

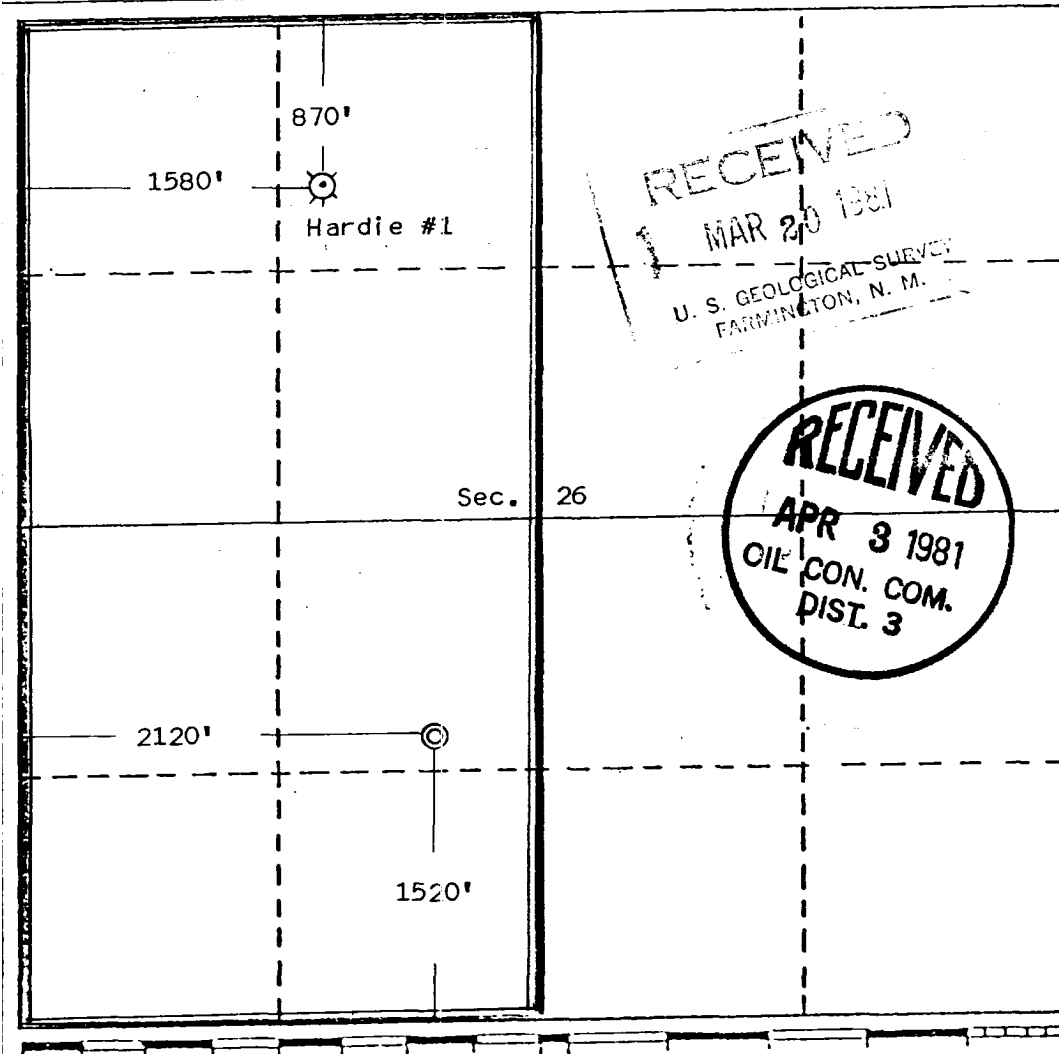
Operator Jerome P. McHugh		Lease Hardie			Well No. 1-E		
Unit Letter K	Section 26	Township 29 North	Range 8 West	County San Juan			
Actual Footage Location of Well:							
1520	feet from the	South	line and	2120	feet from the	West	line
Ground Level Elev. 6389	Producing Formation Dakota		Pool Basin Dakota		Dedicated Acreage: 320		Acres

1. Outline the acreage dedicated to the subject well by colored pencil or hatchure marks on the plat below.
2. If more than one lease is dedicated to the well, outline each and identify the ownership thereof (both as to working interest and royalty).
3. If more than one lease of different ownership is dedicated to the well, have the interests of all owners been consolidated by communitization, unitization, force-pooling, etc?

☐ Yes ☐ No If answer is "yes," type of consolidation _____

If answer is "no," list the owners and tract descriptions which have actually been consolidated. (Use reverse side of this form if necessary.) _____

No allowable will be assigned to the well until all interests have been consolidated (by communitization, unitization, forced-pooling, or otherwise) or until a non-standard unit, eliminating such interests, has been approved by the Division.



CERTIFICATION

I hereby certify that the information contained herein is true and complete to the best of my knowledge and belief.

Jerome P. McHugh Jr.
Name

Jerome P. McHugh Jr.

Position
Agent

Company
Dugan Production Corp.

Date
3-18-81

I hereby certify that the location shown on this plat was taken from field notes collected by me or under my supervision and that the same is true and correct to the best of my knowledge.

Date Surveyed

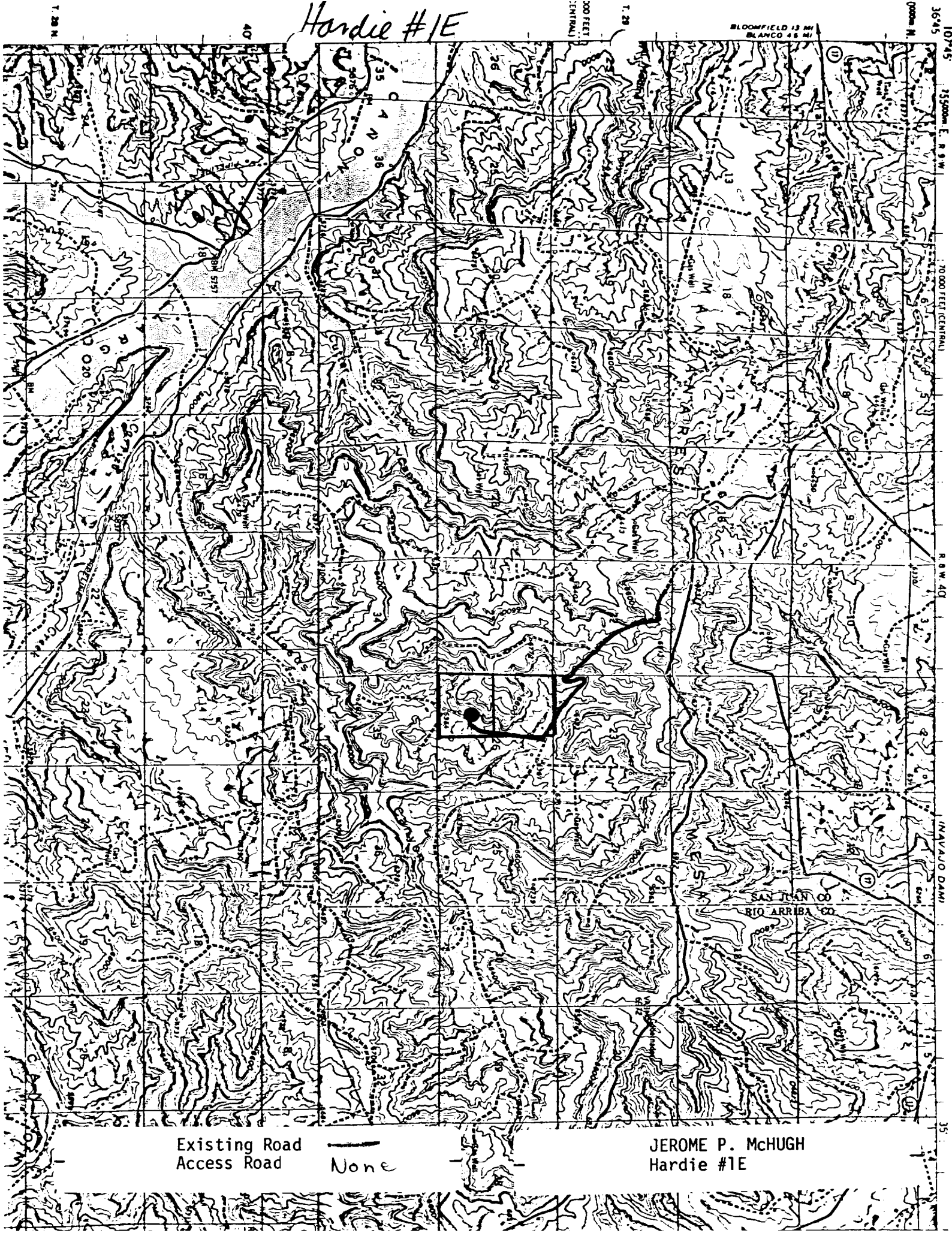
February 3, 1981

Registered Professional Engineer
and/or Land Surveyor

Edgar L. Risenhoover
Certificate No. 5979

Edgar L. Risenhoover, L.S.

Hardie #1E



Existing Road
Access Road
None

JEROME P. McHUGH
Hardie #1E