

UNITED STATES  
DEPARTMENT OF THE INTERIOR  
BUREAU OF LAND MANAGEMENT

FORM APPROVED  
Budget Bureau No. 1004-0135  
Expires: March 31, 1993

**SUNDRY NOTICES AND REPORTS ON WELLS**

Do not use this form for proposals to drill or to deepen or reentry to a different reservoir.  
Use "APPLICATION FOR PERMIT - " for such proposals

1. Type of Well

☐ Oil Well ☒ Gas Well ☐ Other

2. Name of Operator

Amoco Production Company

Attention:

Sonia Prien

3. Address and Telephone No.

P.O. Box 800, Denver, Colorado 80201

(303) 830-4459

4. Location of Well (Footage, Sec., T., R., M., or Survey Description)

670FSL 1300FEL Sec. 7 T 29N R 8W

5. Lease Designation and Serial No.

SF-078414

6. If Indian, Allottee or Tribe Name

7. If Unit or CA, Agreement Designation

8. Well Name and No.

Day #1E

9. API Well No.

3004525519

10. Field and Pool, or Exploratory Area

Mesa Verde

11. County or Parish, State

San Juan New Mexico

12. CHECK APPROPRIATE BOX(s) TO INDICATE NATURE OF NOTICE, REPORT, OR OTHER DATA

TYPE OF SUBMISSION

TYPE OF ACTION

- ☒ Notice of Intent  
☐ Subsequent Report  
☐ Final Abandonment Notice

- ☐ Abandonment  
☒ Recompletion  
☐ Plugging Back  
☐ Casing Repair  
☐ Altering Casing  
☐ Other

- ☐ Change of Plans  
☐ New Construction  
☐ Non-Routine Fracturing  
☐ Water Shut-Off  
☐ Conversion to Injection  
☐ Dispose Water

(Note: Report results of multiple completion on Well Completion or Recompletion Report and Log form.)

13. Describe Proposed or Completed Operations (Clearly state all pertinent details, and give pertinent dates, including estimated date of starting any proposed work. If well is directionally drilled, give subsurface locations and measured and true vertical depths for all markers and zones pertinent to this work.)\*

Amoco Production Company intends to recomplete the subject well per the attached procedures.

RECEIVED  
FEB 10 1995  
OIL CON. DIV.  
DIST. 3

RECEIVED  
MAR 13 1995  
OIL CON. DIV.  
DIST. 3

RECEIVED  
MAR 13 1995  
OIL CON. DIV.  
DIST. 3

14. I hereby certify that the foregoing is true and correct

Signed

*Sonia Prien*

Title

Staff Assistant

Date

01-04-1995

(This space for Federal or State office use)

Approved by

Title

Conditions of approval, if any:

APPROVED

JAN 11 1995

Title 18 U.S.C. Section 1001, makes it a crime for any person knowingly and willfully to make to any department or agency of the United States any false, fictitious or fraudulent statements or representations as to any matter within its jurisdiction.

WATER MANAGEMENT

Hand C-104 for exception to pool rules 18-9170  
See Instructions on Reverse Side  
AMOCO

District I  
PO Box 1980, Hobbs, NM 88241-1980  
District II  
PO Drawer, DD, Artesia, NM 88211-0719  
District III  
1000 Rio Brazos Rd., Aztec, NM 87410  
District IV  
PO Box 2088, Santa Fe, NM 87504-2088

State of New Mexico  
Energy, Minerals & Natural Resources Department

OIL CONSERVATION DIVISION  
PO Box 2088  
Santa Fe, NM 87504-2088

Form C-102  
Revised February 21, 1994  
Instructions on back  
Submit to appropriate District Office  
State Lease - 4 Copies  
Fee Lease - 3 Copies

☐ AMENDED REPORT

WELL LOCATION AND ACREAGE DEDICATION PLAT

1 API Number 30045 25519		2 Pool Code 73319		3 Pool Name Blanco Mesaverde	
4 Property Code 000418		5 Property Name Day			6 Well Number 1 E
7 OGRID No. 000778		8 Operator Name AMOCO PRODUCTION COMPANY			9 Elevation

10 Surface Location

UL or lot no. 0	Section 7	Township 29N	Range 8W	Lot Idn 0	Feet from the 670	North/South line South	Feet from the 1300	East/West line East	County San Juan
--------------------	--------------	-----------------	-------------	--------------	----------------------	---------------------------	-----------------------	------------------------	--------------------

11 Bottom Hole Location If Different From Surface

UL or lot no.	Section	Township	Range	Lot Idn	Feet from the	North/South line	Feet from the	East/West line	County
---------------	---------	----------	-------	---------	---------------	------------------	---------------	----------------	--------

12 Dedicated Acres 320	13 Joint or Infill	14 Consolidation Code	15 Order No.
---------------------------	--------------------	-----------------------	--------------

NO ALLOWABLE WILL BE ASSIGNED TO THIS COMPLETION UNTIL ALL INTERESTS HAVE BEEN CONSOLIDATED  
OR A NON-STANDARD UNIT HAS BEEN APPROVED BY THE DIVISION

16		17 OPERATOR CERTIFICATION	
<div>RECEIVED JAN 0 8 1995 OIL CON. DIV. DIST. 3</div>		I hereby certify that the information contained herein is true and complete to the best of my knowledge and belief	
		Signature Lois Raeburn	
		Printed Name Business Assistant	
<div>RECEIVED FEB 1 0 1995 OIL CON. DIV. DIST. 3</div>		Title 12-14-94	
		Date	
		18 SURVEYOR CERTIFICATION	
<div>RECEIVED FEB 1 0 1995 OIL CON. DIV. DIST. 3</div>		I hereby certify that the well location shown on this plat was plotted from field notes of actual surveys made by me or under my supervision, and that the same is true and correct to the best of my belief.	
		July 1981	
		Date of Survey	
<div>RECEIVED FEB 1 0 1995 OIL CON. DIV. DIST. 3</div>		Signature and Seal of Professional Surveyor:	
		ON FILE	
		Certificate Number 3950	

RECOMPLETION PROCEDURE  
DAY 1E - Run 45  
BASIN DAKOTA --> MESA VERDE  
SRBU - SAN JUAN OC  
December 5, 1994

Purpose:

This well is currently a marginal Dakota producer. However, it is in a good site to recomplete to the Mesa Verde horizon as a replacement for the Day B 2A. The Day B 2A is currently SI and will not produce against line pressure. It recovered a cumulative production of only 842 MMCF, indicating a large potential for remaining Mesa Verde reserves. It will be evaluated for P&A after the Day 1E is recompleted. Much larger production rates can be expected from the Mesa Verde than the Dakota in the Day 1E, and Mesa Verde production is eligible for the Tight Gas Sand tax credit. The current producing intervals in the Dakota will be isolated and available for possible return to production in the future.

This procedure will isolate the Dakota and recomplete the Day 1E to the Mesa Verde.

Please call Stan Kolodzie at ext. 4769 in Denver if you have any questions.

Current Production:

35 MCFD

Anticipated Production

550 MCFD

Estimated Cost:

\$ 175,000 (Gross)

Estimated Payout:

39 mos

REQUIRED PERMITS AND APPROVALS BEFORE WORKOVER CAN BEGIN

(Check off as permits are received)

BLM

<> Surface Disturbance - No Permit Required  
No surface disturbance is anticipated.

<> Wellbore Changes - PERMITS REQUIRED

Isolation of the Dakota zone will require a permit.  
Recompletion to the Mesa Verde horizon will require a permit.

<> Produced Gas - No Permit Required

Produced gas will be handled as before the workover.

DEQ

<> Surface Discharge - No Permit Required  
No surface discharge is anticipated

NOTES:

Well Flac No. = 97980401

Elev. Reference: 6372 GL

Amoco WI = 0.50

Total Royalty = 0.1550

Depths are based on the Gearhart Compensated Density Log dated 1/15/83. A copy of the relevant intervals is attached.

Recompletion  
Day 1E - Run 45  
December 5, 1994

Procedure:

1. Check bradenhead pressure. Relay results to Stan Kolodzie in Denver.
2. Move in rig. Rig Up. Nipple up blowout preventer. Install blooie lines.
3. Control or kill well. Since the Dakota zone is to be isolated, it is not necessary to take precautions to prevent kill fluid invading this zone.
4. Pull Dakota 2 1/16" tubing string.
5. Run 4 1/2" bit and scraper and clean out to top Dakota perf at 7296'.
6. Run CIBP. Set CIBP between 7196 and 7246'. By BLM stipulations, the CIBP must be between 50 and 100 feet above the current top perf. Cover CIBP with 50' of cement.
7. Run packer and pressure test casing to 1000 psi. If casing integrity fails notify Stan Kolodzie in Denver. A casing repair will be done unless the cost to repair the casing appears too high.
8. Run casing gun and perforate new Mesa Verde intervals. Since the pay zone is to be fraced, perforating underbalance is not needed and a lubricator is not required. A fluid column giving 700 psi hydrostatic head at the perfs should be sufficient to contol the pressure in the Mesa Verde. Perforate the following intervals with 3 1/8" casing gun, 2 JSPF, 120 degree phasing.

Cliffhouse:	4613 - 4620	
	4624 - 4634	
	4658 - 4663	
	4668 - 4671	Total of 58 shots
Menefee	4942 - 4960	
	4994 - 5006	Total of 64 shots
Pt. Lookout	5220 - 5232	
	5239 - 5246	
	5259 - 5266	
	5270 - 5274	
	5289 - 5296	Total of 84 shots
		Grand Total of 206 shots

STIMULATION

9. The Mesa Verde will be fracture stimulated in a manner similar to the Florance C 8E recompletion. Refer to the attached frac schedule for details.
10. Run 2 3/8" tubing to Mesa Verde. Set tubing at approx. 5290'.

Recompletion  
Day 1E - Run 45  
December 5, 1994

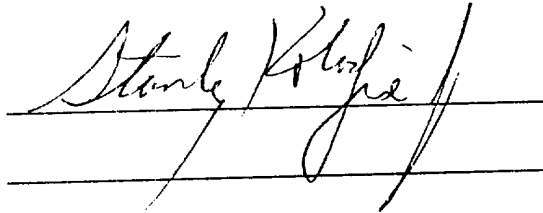
10. Remove BOP. Hook up well to production equipment.

11. Unload well with air unit or Nitrogen. Swab in well if necessary. Record casing and tubing pressures for completion report.

12. RDMO service unit. Return to production.

AUTHORIZATIONS

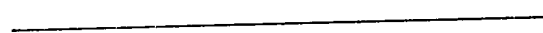
ENGINEER

A handwritten signature in cursive script, appearing to read "Stanley K. Kozaj", is written over a horizontal line.

PRODUCTION FOREMAN

A horizontal line for a signature.

WORKOVER FOREMAN

A horizontal line for a signature.

RECOMPETITION PROCEDURE  
DAY 1E - Run 45  
December 5, 1994  
MATERIALS LIST

Amoco

Service Unit with Rig Pump  
Bit and Scraper for 4 1/2", 11.6#, K-55 casing  
Cast Iron Bridge Plug for 4 1/2" casing  
Swab unit (if necessary)

Nitrogen                      Vendor                      Alternate  
or Air Unit

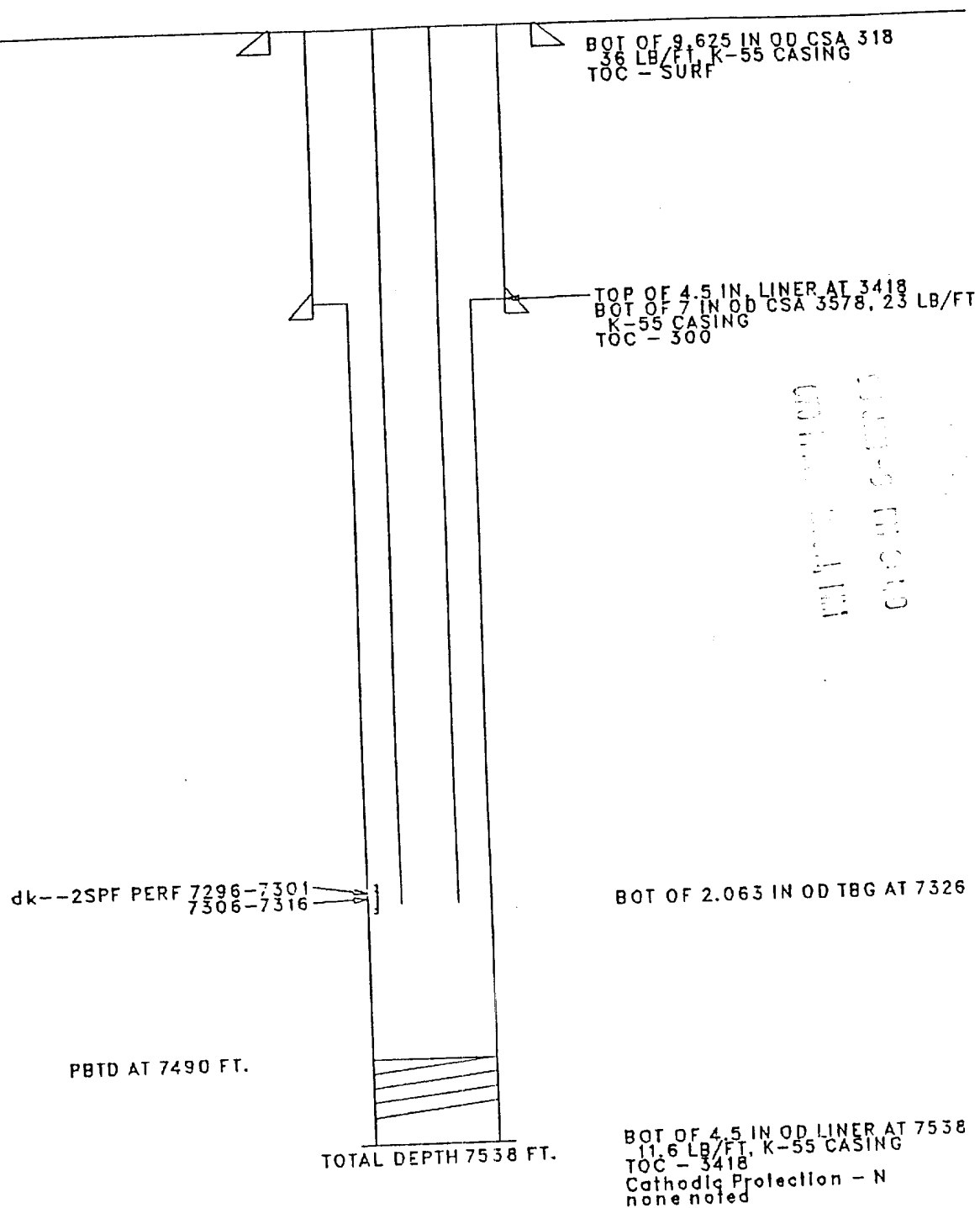
Perforating                      Vendor                      Alternate  
206 Jet shots - 13 gram charges minimum, from 3 1/8' hollow-carrier casing gun,  
120 degree phasing

Stimulation                      Vendor                      Alternate

Cement                      Vendor                      Alternate  
Enough Cement to cover 4 1/2" CIBP for approx 50'

cc: B X Maez, Berto Martinez } SJOC  
S X Kolodzie, L K Raeburn, Well File } Denver

DAY 001E 592  
Location - 7P- 29N- 8W  
SINGLE dk  
Orig. Completion - 2/83  
Last File Update - 1/89 by BCB



GEARHART

COMPENSATED  
DENSITY LOG

FILING NO.

COMPANY TENNECO OIL COMPANYWELL DAY NO. 1EFIELD BASIN DAKOTACOUNTY SAN JUAN STATE NEW MEXICO

Location:

670' FSL x 1300' FEL

TEL

Other Services:

Sec. 7 Twp. 29N Rge. 8WPermanent Datum: GROUND LEVEL Elev.: 6372Elev.: K.B. 6384  
D.F. 6383  
G.L. 6372Log Measured from K.B. 12 Ft. Above Perm. DatumDrilling Measured From K.B.Date 1-15-83Run No. ONEDepth-Driller 7541Depth-Logger 7544Bottom logged interval 7543Top logged interval 3700Type fluid in hole GASDensity --- Visc. ---pH --- Fluid Loss ---Source of Samples ---Rm. @ Meas. Temp. ---Rmt. @ Meas. Temp. ---Rmc. @ Meas. Temp. ---Source Rmt. ---Max rec. temp., deg F. 160End Circulation ---Logger on Bottom 21.25Recorded By GillinghamWitnessed By Mr. Jordan

Bore-Hole Record				Casing Record			
Run No.	Level	Bit	From	To	Size	Wgt.	From
One	12 1/2	Surface	318	3575	9 5/8	36	Surface
One	8 3/4	318	3575	3575	23		Surface

30

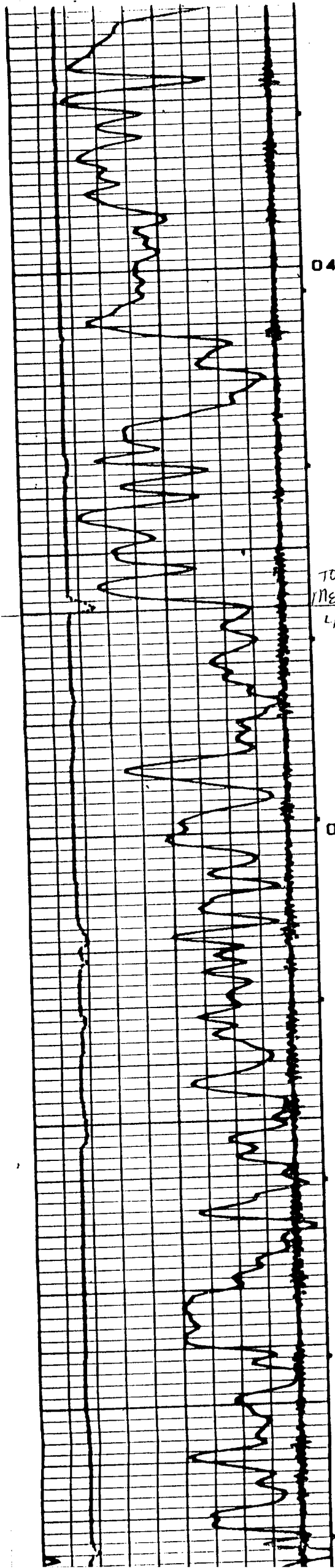
(CDL)

5 CALIPER X 15

04600

TOP  
DIFFUSION  
(4' or 3')



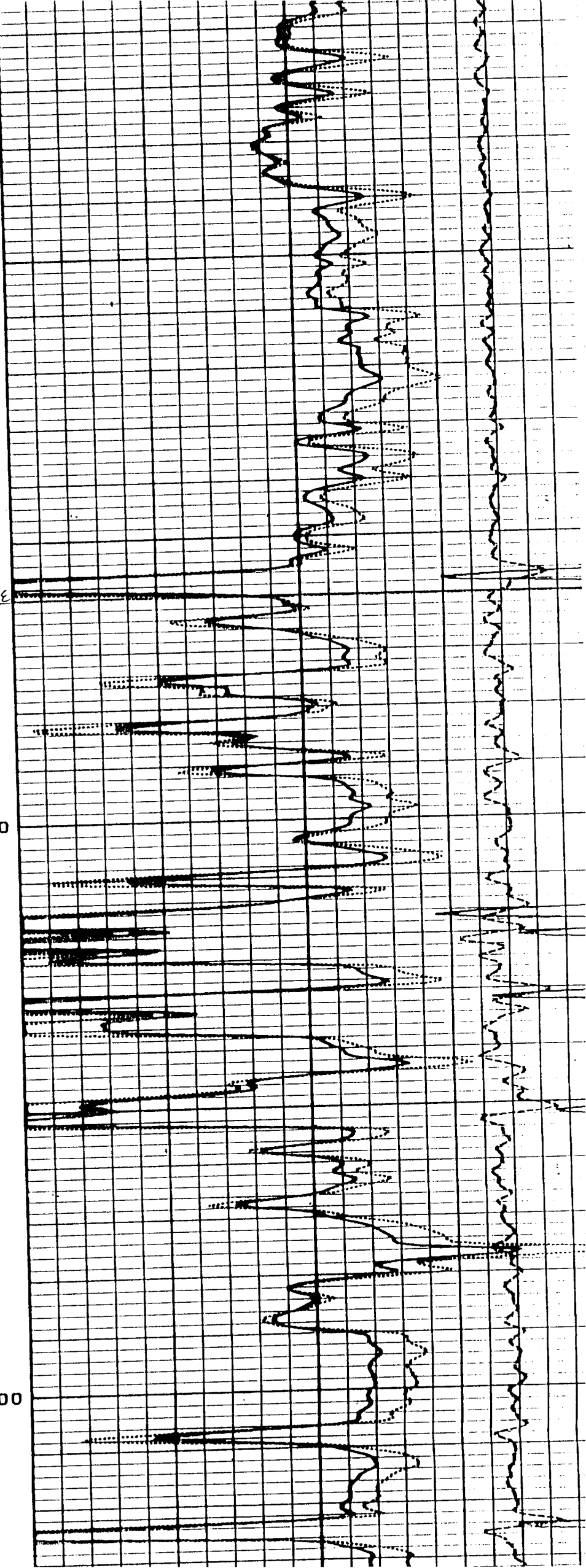


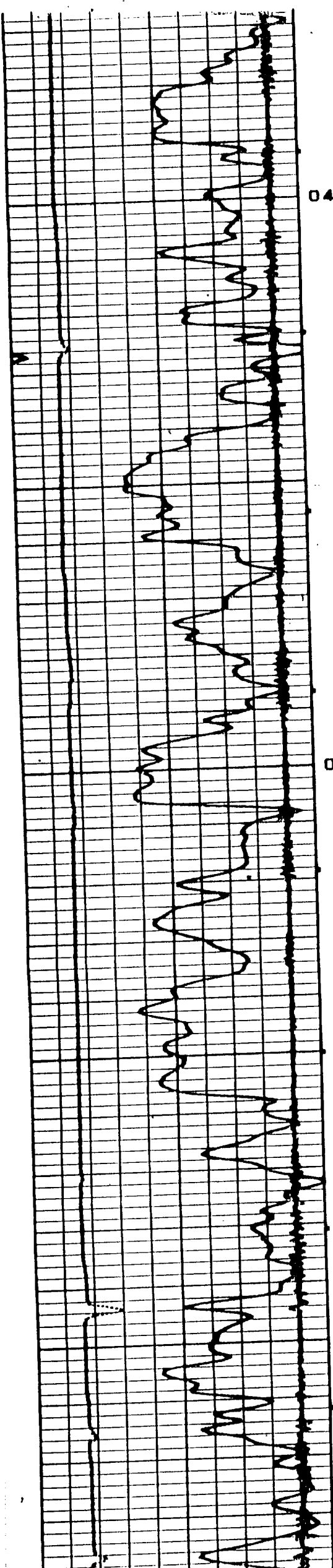
04700

TOP  
INENEFEE  
4760

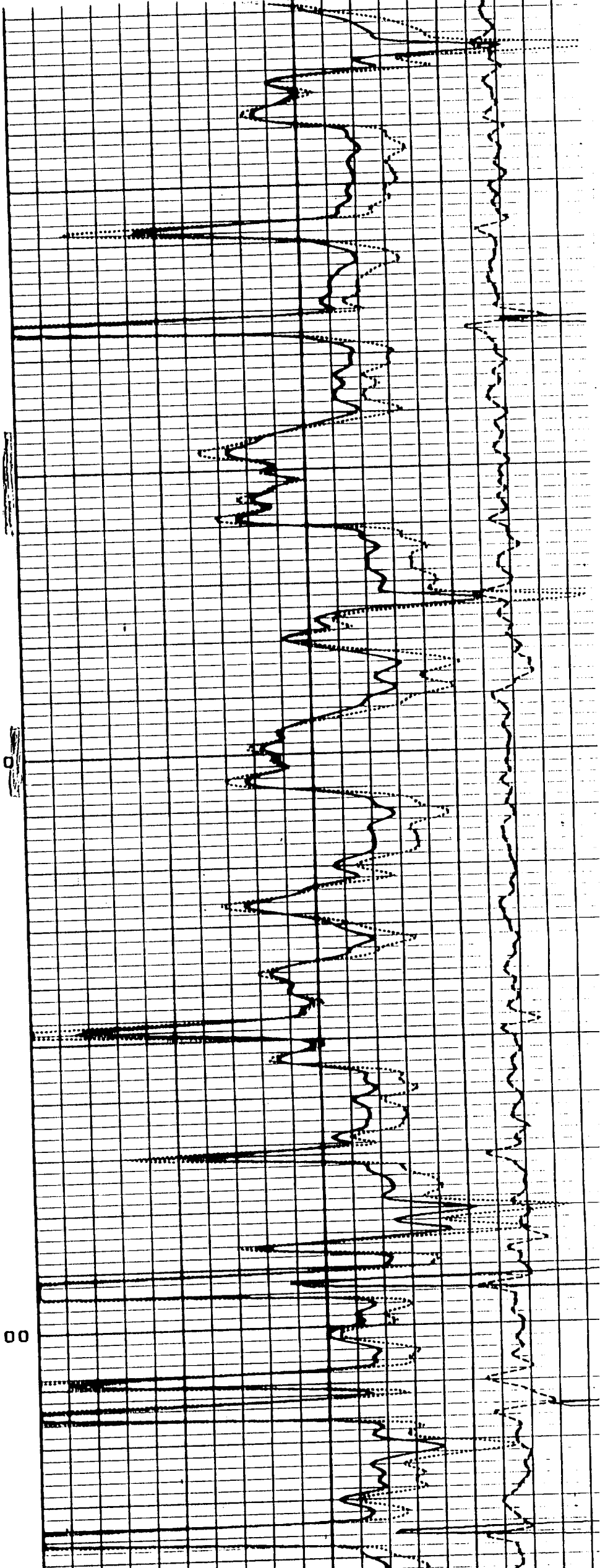
04800

04900



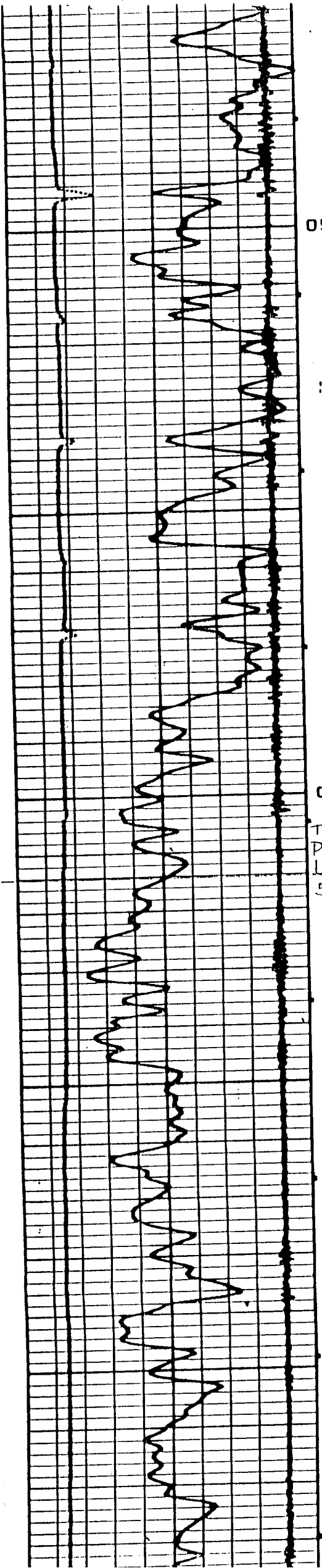


04900



05000

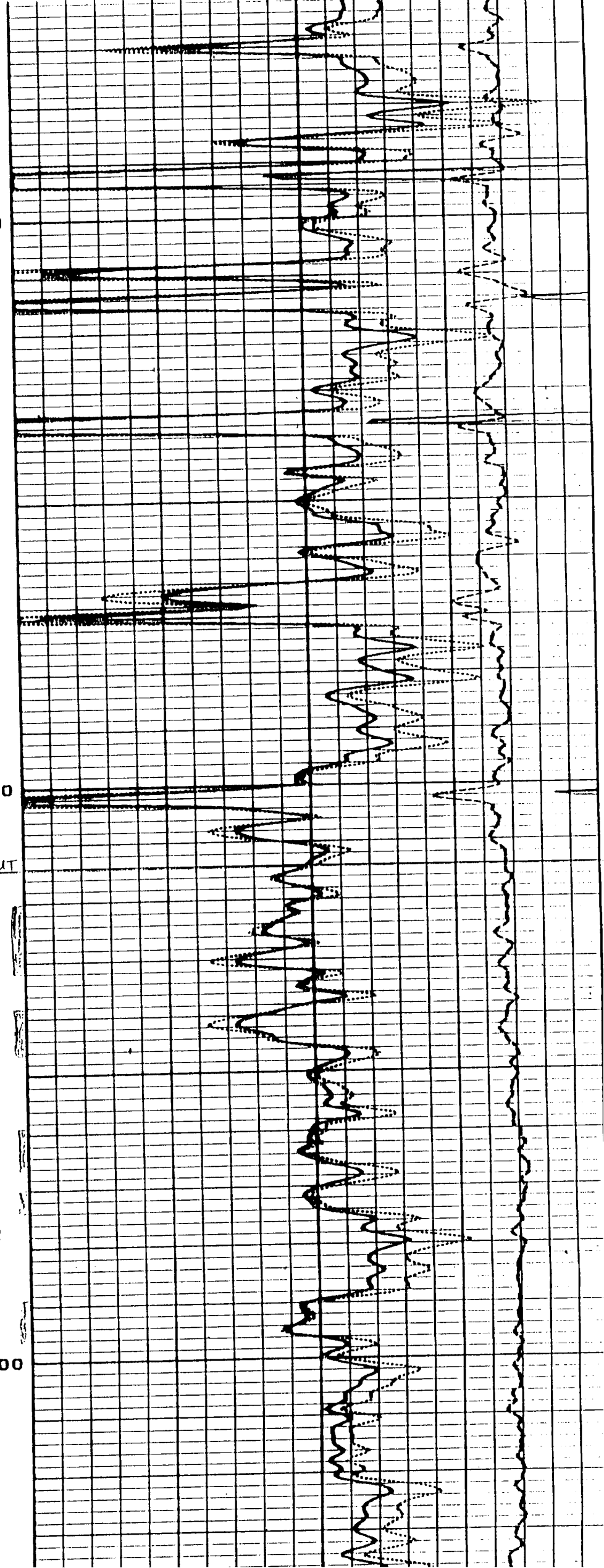
05100



05100

TOP  
POINT  
LOOKOUT  
5214

05300



DP  
GRANERUS  
SHALE  
7254'

TOP  
DAKOTA A  
Perfs: 0  
07300  
7290' (5)  
7321' (5)  
Perfs: 0  
7300' (5)  
7316' (10)

NET PAY = 1 1/2'

NET PAY = 10'

TOTAL  
PERFS

TOP  
DAKOTA B

07400

TOP  
DAKOTA D  
7451'

@ 7310'  $\phi = 14\%$   
 $R = 60$   $\rightarrow W = 23\%$

12 1/2'

NET PAY 'P' = 14'

NET PAY = 0

NET PAY = 0