

UNITED STATES  
DEPARTMENT OF THE INTERIOR  
GEOLOGICAL SURVEY

## APPLICATION FOR PERMIT TO DRILL, DEEPEN, OR PLUG BACK

## 1a. TYPE OF WORK

DRILL ☒DEEPEN ☐PLUG BACK ☐

## b. TYPE OF WELL

OIL  
WELL ☐GAS  
WELL ☒

OTHER

SINGLE  
ZONE ☒MULTIPLE  
ZONE ☐

## 2. NAME OF OPERATOR

Tenneco Oil Company

## 3. ADDRESS OF OPERATOR

P.O. Box 3249, Englewood, CO 80155

## 4. LOCATION OF WELL (Report location clearly and in accordance with any State requirements.)\*

At surface

890' FNL, 1750' FWL

At proposed prod. zone

## 14. DISTANCE IN MILES AND DIRECTION FROM NEAREST TOWN OR POST OFFICE\*

Approximately 12 mi E of Blanco, NM

BUREAU OF LAND MANAGEMENT  
FARMINGTON RESOURCE AREA

## 15. DISTANCE FROM PROPOSED\*

LOCATION TO NEAREST

PROPERTY OR LEASE LINE, FT.

(Also to nearest drilg. unit line, if any)

890'

## 16. NO. OF ACRES IN LEASE

1447.31

## 17. NO. OF ACRES ASSIGNED

TO THIS WELL

323.15

## 18. DISTANCE FROM PROPOSED LOCATION\*

TO NEAREST WELL, DRILLING, COMPLETED,  
OR APPLIED FOR, ON THIS LEASE, FT.

## 19. PROPOSED DEPTH

+7,550'

## 20. ROTARY OR CABLE TOOLS

Rotary

## 21. ELEVATIONS (Show whether DF, RT, GR, etc.)

6239' GR

DRILLING OPERATIONS AUTHORIZED ARE  
SUBJECT TO COMPLIANCE WITH ATTACHED

## 22. APPROX. DATE WORK WILL START\*

ASAP

## 23.

"GENERAL REQUIREMENTS"  
PROPOSED CASING AND CEMENTING PROGRAMThis action is subject to administrative  
appeal pursuant to 30 CFR 250.1

SIZE OF HOLE	SIZE OF CASING	WEIGHT PER FOOT	SETTING DEPTH	
12-1/4"	9-5/8"	36#	+ 325'	Circulate to surface
8-3/4"	7"	23#	+ 3640'	Circulate to surface 2 stages
6-1/4"	4-1/2"	10.5#	+ 7000'	Circulate to liner top
6-1/4"	4-1/2"	11.6#	+ 7550'	Circulate to liner top

See Attached

RECEIVED  
AUG 27 1984  
OIL CON. DIV  
DIST. 3

IN ABOVE SPACE DESCRIBE PROPOSED PROGRAM: If proposal is to deepen or plug back, give data on present productive zone and proposed new productive zone. If proposal is to drill or deepen directionally, give pertinent data on subsurface locations and measured and true vertical depths. Give blowout preventer program, if any.

## 24.

SIGNED

TITLE Regulatory Analyst II

(This space for Federal or State office use)

PERMIT NO.

APPROVAL DATE

APPROVED BY

TITLE

CONDITIONS OF APPROVAL, IF ANY:

APPROVED

AS AMENDED

DATE

AUG 23 1984

AREA MANAGER  
FARMINGTON RESOURCE AREA

## OIL CONSERVATION DIVISION

P. O. BOX 2088

SANTA FE, NEW MEXICO 87501

Form C-107  
Revised 10-1-72STATE OF NEW MEXICO  
ENERGY AND MINERALS DEPARTMENT

All distances must be from the outer boundaries of the Section.

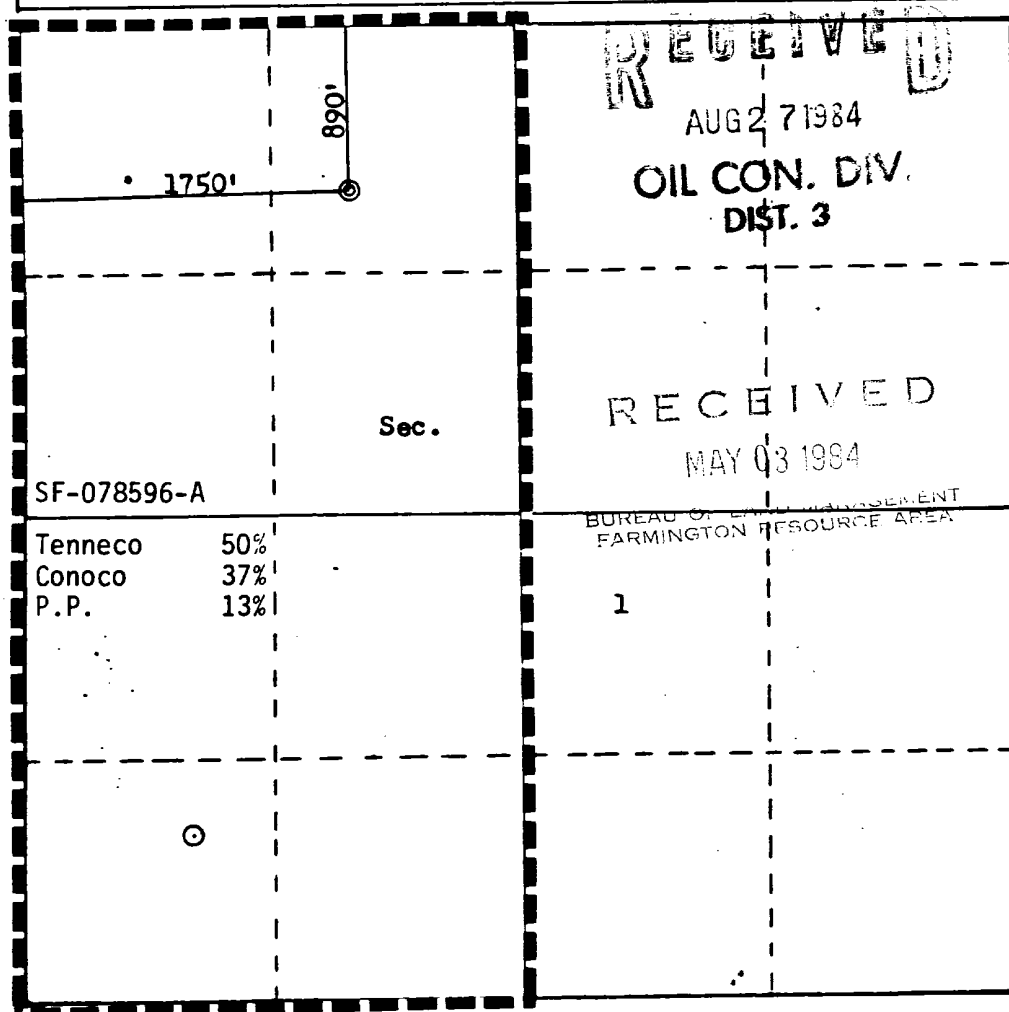
Operator <b>TENNECO OIL COMPANY</b>			Lease <b>FLORANCE</b>		Well No. <b>30E</b>
Unit Letter <b>C</b>	Section <b>1</b>	Township <b>29N</b>	Range <b>8W</b>	County <b>San Juan</b>	
Actual Footage Location of Well: <b>890</b> feet from the <b>North</b> line and <b>1750</b> feet from the <b>West</b> line					
Ground Level Elev. <b>6239</b>	Producing Formation <b>Dakota</b>	Pool <b>Basin Dakota</b>		Dedicated Acreage: <b>323.15</b> Acres	

1. Outline the acreage dedicated to the subject well by colored pencil or hatchure marks on the plat below.
2. If more than one lease is dedicated to the well, outline each and identify the ownership thereof (both as to working interest and royalty).
3. If more than one lease of different ownership is dedicated to the well, have the interests of all owners been consolidated by communitization, unitization, force-pooling, etc?

☐ Yes ☐ No If answer is "yes," type of consolidation \_\_\_\_\_

If answer is "no," list the owners and tract descriptions which have actually been consolidated. (Use reverse side of this form if necessary.) \_\_\_\_\_

No allowable will be assigned to the well until all interests have been consolidated (by communitization, unitization, forced-pooling, or otherwise) or until a non-standard unit, eliminating such interests, has been approved by the Commission.



Scale: 1"=1000'

## CERTIFICATION

I hereby certify that the information contained herein is true and complete to the best of my knowledge and belief.

*John Orr*

Name

John Orr

Position

Regulatory Analyst II

Company

Tenneco Oil Company

Date

April 30, 1984

I hereby certify that the well location shown on this plat was plotted from field notes of actual surveys made by me or under my supervision, and that the same is true and correct to the best of my knowledge and belief.

Date Surveyed

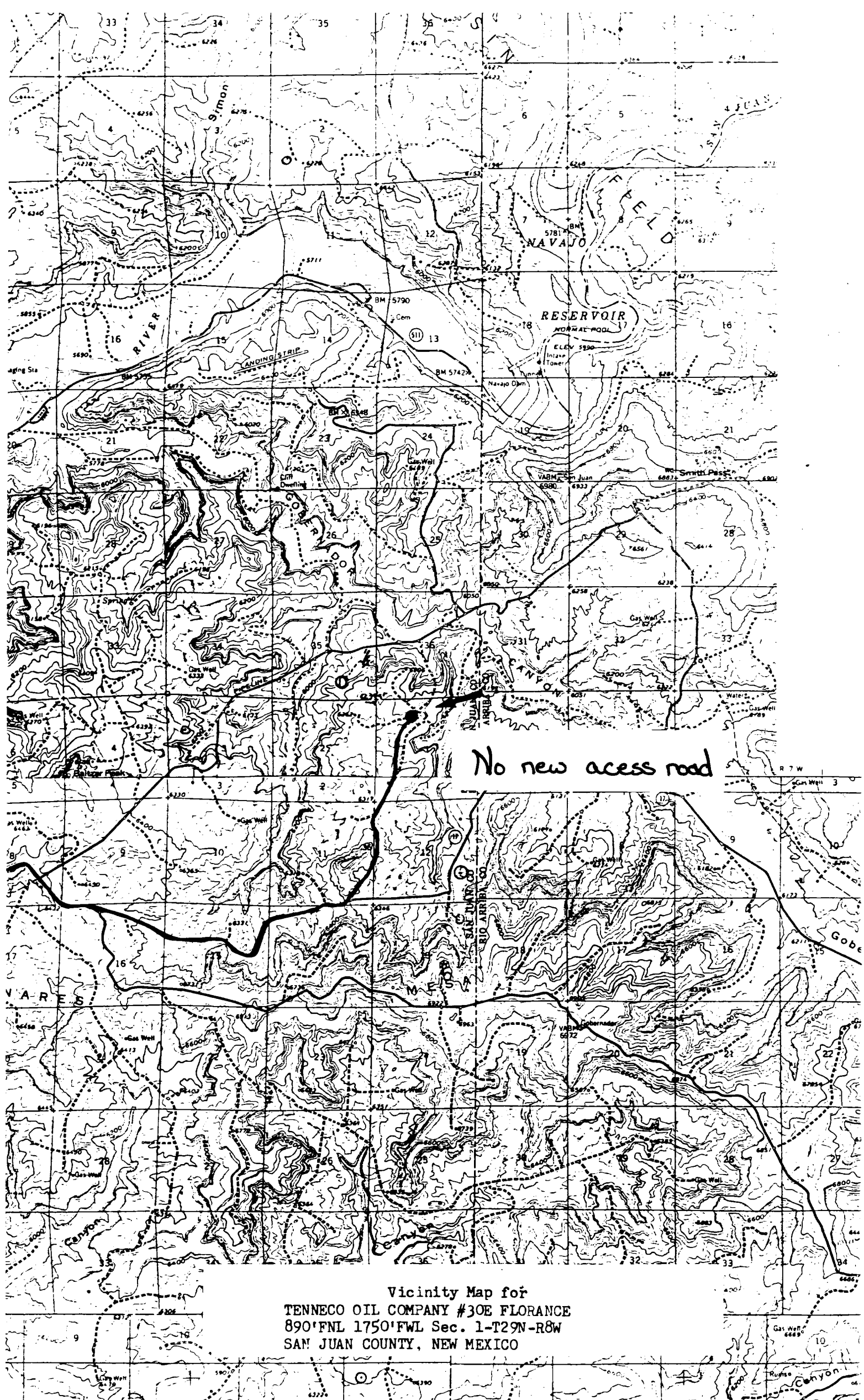
April 16, 1984

Registered Professional Engineer  
and Land Surveyor

*Fred B. Kerr Jr.*  
Fred B. Kerr Jr.

Certificate No. 4222

3950



Vicinity Map for  
TENNECO OIL COMPANY #30E FLORANCE  
890' FNL 1750' FWL Sec. 1-T29N-R8W  
SAN JUAN COUNTY, NEW MEXICO