



STATE OF NEW MEXICO

ENERGY, MINERALS AND NATURAL RESOURCES DEPARTMENT

OIL CONSERVATION DIVISION

*at*  
*CE*

*PAID*

GARREY CARRUTHERS  
GOVERNOR

POST OFFICE BOX 2088  
STATE LAND OFFICE BUILDING  
SANTA FE, NEW MEXICO 87504  
(505) 827-5800

March 27, 1989

Meridian Oil, Inc.  
P.O. Box 4289  
Farmington, NM 87499-4289

Attention: Peggy Bradfield

Administrative Order NSP-1565

Dear Ms. Bradfield:

Reference is made to your application of February 14, 1989 for a 232.04-acre non-standard gas proration unit consisting of the following acreage in the Basin Fruitland Coal (Gas) Pool:

SAN JUAN COUNTY, NEW MEXICO  
TOWNSHIP 29 NORTH, RANGE 8 WEST, NMPM  
Section 18: Lots 1, 2, 3, and 4 and the E/2 W/2

It is my understanding that this unit is to be dedicated to your Day Well No. 202 drilled at a previously approved non-standard coal gas well location pursuant to Decretory Paragraph No. (4) of Division Order No. R-8768, 865 feet from the North line and 1055 feet from the West line (Unit C) of said Section 18.

By authority granted me under the provisions of Rule 6 of the Special Rules and Regulations for the Basin Fruitland Coal (Gas) Pool, as promulgated by Division Order No. R-8768, the above non-standard gas proration unit is hereby approved.

Sincerely,

*WJL*

for William J. LeMay  
Director

WJL/MES/ag

RECEIVED  
MAR 29 1989  
OIL CON. DIV.  
DIST. 3

cc: Oil Conservation Division - Aztec  
NM Oil and Gas Engineering Committee - Hobbs  
US Bureau of Land Management - Farmington



STATE OF NEW MEXICO  
ENERGY AND MINERALS DEPARTMENT  
OIL CONSERVATION DIVISION  
AZTEC DISTRICT OFFICE

1000 RIO BRAZOS ROAD  
AZTEC, NEW MEXICO 87410  
(505) 334-6178

OIL CONSERVATION DIVISION  
BOX 2088  
SANTA FE, NEW MEXICO 87501

DATE 2-15-89

RE: Proposed MC \_\_\_\_\_  
Proposed DIIC \_\_\_\_\_  
Proposed NSL \_\_\_\_\_  
Proposed SWD \_\_\_\_\_  
Proposed WFX \_\_\_\_\_  
Proposed PMX \_\_\_\_\_

Gentlemen:

I have examined the application dated 2-14-89  
for the Mission Oil Inc. Day #202 C-18-24N-80  
Operator Lease and Well No. Unit, S-T-R

and my recommendations are as follows:

Approve  
\_\_\_\_\_  
\_\_\_\_\_  
\_\_\_\_\_  
\_\_\_\_\_  
\_\_\_\_\_

Yours truly,

G. J. [Signature]

# MERIDIAN OIL

February 10, 1989

Mr. William LeMay  
New Mexico Oil Conservation Division  
Post Office Box 2088  
Santa Fe, New Mexico 87504

Dear Mr. LeMay:

This is a request for administrative approval for a non-standard proration unit for a gas well location in the Basin Fruitland Coal Pool.

Meridian Oil Inc.'s Day #202 is located at 865' from the North line and 1055' from the West line of Section 18, T-29-N, R-8-W, San Juan County, New Mexico.

A copy of this application is being submitted to all offset operators by certified mail with a request that they furnish your Santa Fe office with a Waiver of Objection, and return one copy to this office.

A plat showing the proposed well location and configuration of Section 18, along with an ownership plat, are attached.

Sincerely yours,

Peggy Bradfield

encl.

## WAIVER

\_\_\_\_\_ hereby waives objection to Meridian Oil Inc. application for a non-standard proration unit for their Day #202 as proposed above.

By: \_\_\_\_\_

Date: \_\_\_\_\_

xc: Tenneco Oil

RECEIVED  
FEB 14 1989  
OIL CON. DIV.  
DIST. 3

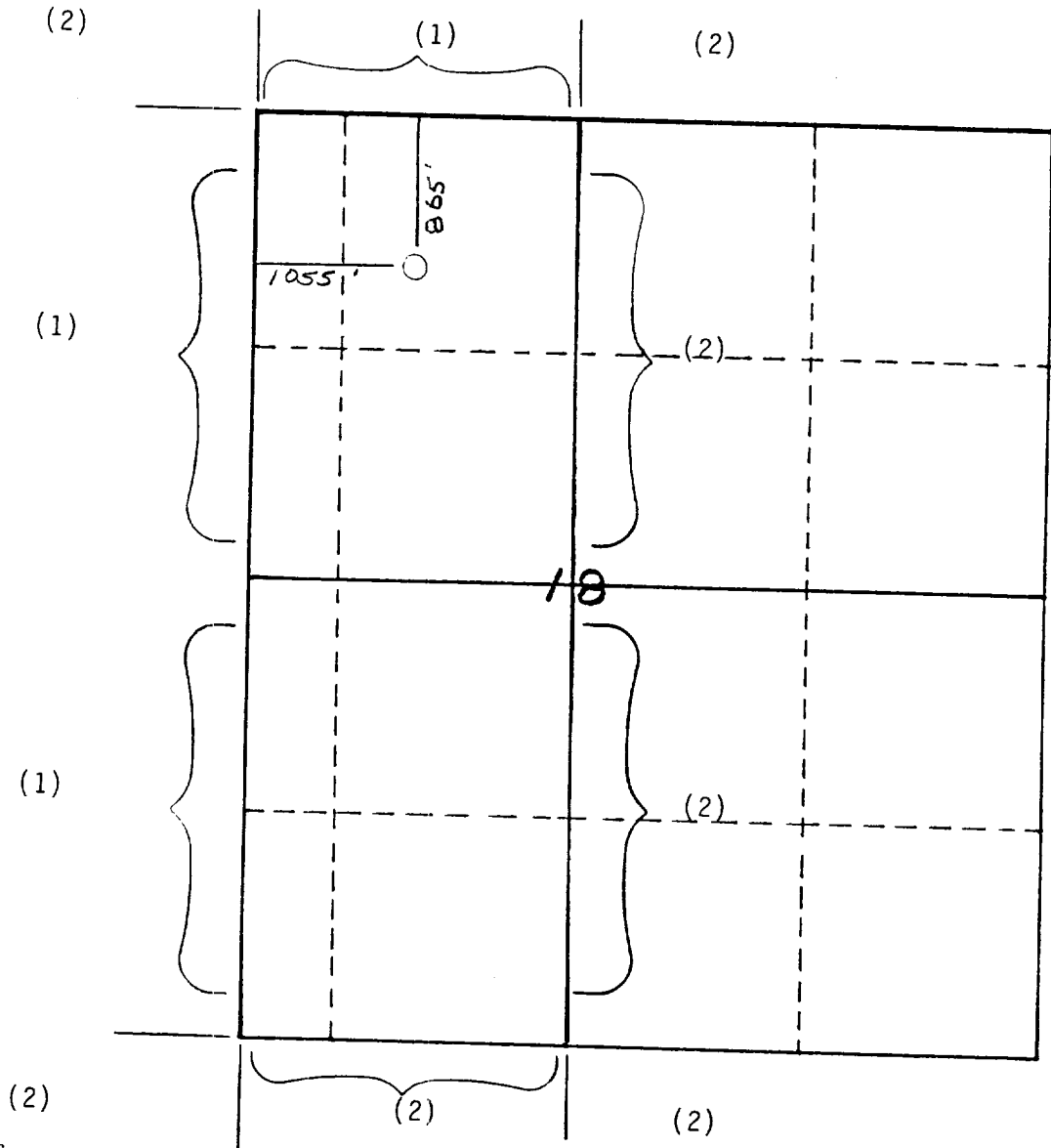
MERIDIAN OIL INC.

Well Name Day #202, Fruitland Coal

Footage---- 865' FNL; 1055' FWL

APPLICATION FOR NON-STANDARD PRORATION UNIT

County San Juan State New Mexico Section 18 Township 29N Range 8W



REMARKS:

OFFSET OPERATORS:

(1) Meridian Oil Inc.

(2) Tenneco Oil Company

All distances must be from the outer boundaries of the section.

Operator <b>MERIDIAN OIL INC.</b>			Lease <b>DAY</b>		Well No. <b>232</b>
Unit Letter <b>C</b>	Section <b>18</b>	Township <b>29 N.</b>	Range <b>8 W.</b>	County <b>San Juan</b>	
Actual Footage Location of Well <b>65</b> feet from the <b>NORTH</b> line and <b>1055</b> feet from the <b>WEST</b> line					
Ground Level Elev. <b>6409</b>	Producing Formation <b>Fruitland Coal</b>		Pool <b>Basin</b>		Dedicated Acreage: <b>232.04</b>

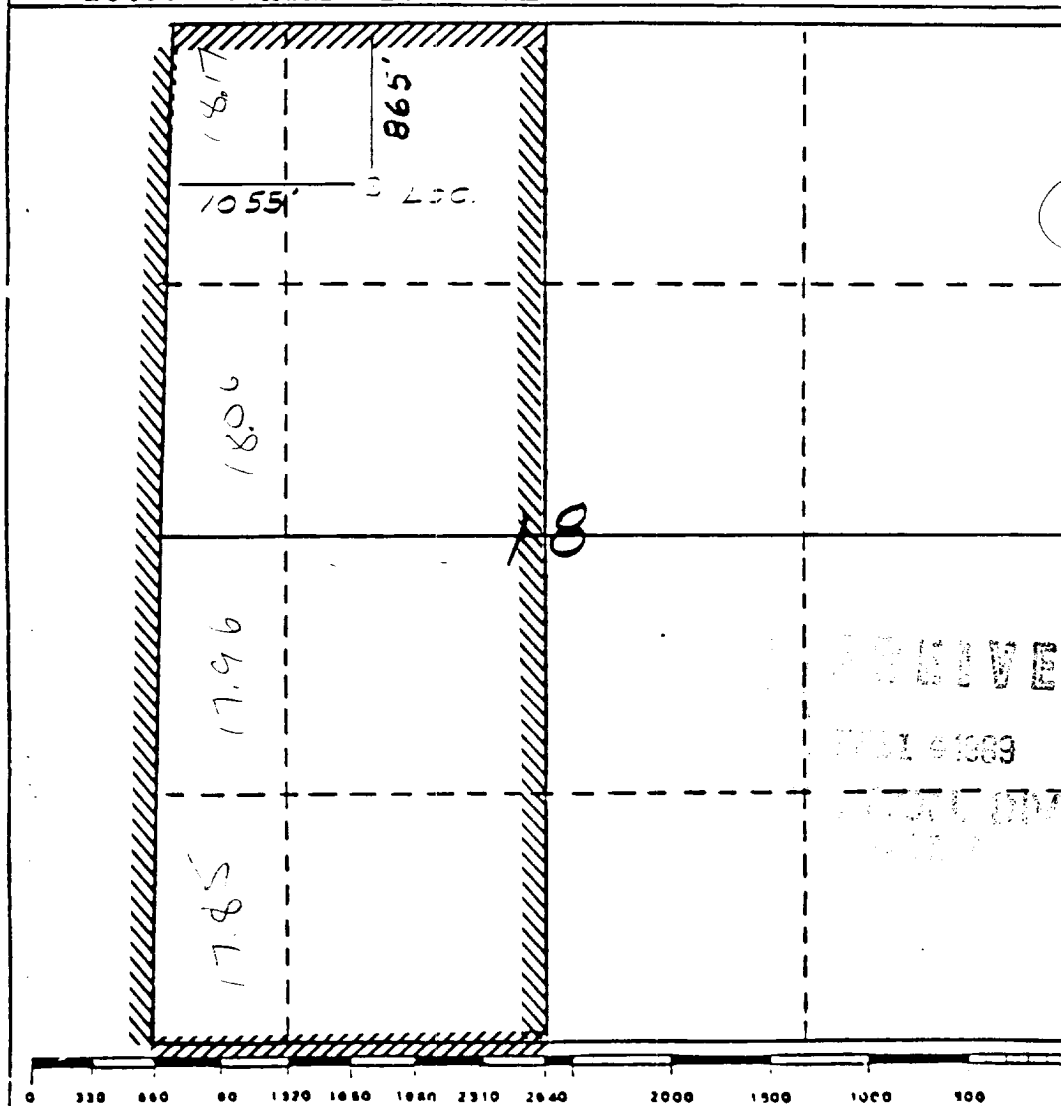
1. Outline the acreage dedicated to the subject well by colored pencil or hachure marks on the plat below.
2. If more than one lease is dedicated to the well, outline each and identify the ownership thereof (both as to work interest and royalty).
3. If more than one lease of different ownership is dedicated to the well, have the interests of all owners been consolidated by communitization, unitization, force-pooling, etc?

☐ Yes ☐ No If answer is "yes," type of consolidation \_\_\_\_\_

If answer is "no," list the owners and tract descriptions which have actually been consolidated. (Use reverse side of this form if necessary.) \_\_\_\_\_

No allowable will be assigned to the well until all interests have been consolidated (by communitization, unitization, forced-pooling, or otherwise) or until a non-standard unit, eliminating such interests, has been approved by the Division.

\*Note: Standard Location



## CERTIFICATION

I hereby certify that the information contained herein is true and complete to the best of my knowledge and belief.

Name

Regulatory Affairs  
PositionMeridian Oil Inc.  
Company

Date

I have examined the well location shown on this plat was placed from notes of actual survey made by me under my supervision and that the same is true and correct to the best of my knowledge and belief.

Date Surveyed  
6-9-83Registered Professional Engineer  
and/or Land SurveyorNeale C. Edwards  
Certificate No.  
6857