

UNITED STATES  
DEPARTMENT OF THE INTERIOR  
BUREAU OF LAND MANAGEMENT

APPLICATION FOR PERMIT TO DRILL, DEEPEN, OR PLUG BACK

1a. TYPE OF WORK  
DRILL ☒ DEEPEN ☐ PLUG BACK ☐

b. TYPE OF WELL  
OIL WELL ☐ GAS WELL ☒ OTHER ☐

2. NAME OF OPERATOR  
Meridian Oil Inc.

3. ADDRESS OF OPERATOR  
PO Box 4289, Farmington, NM 87499

4. LOCATION OF WELL (Report location clearly and in accordance with any State requirements.)\*  
At 800' N, 1350' E  
At proposed prod. zone

14. DISTANCE IN MILES AND DIRECTION FROM NEAREST TOWN OR POST OFFICE\*  
3 miels from Navajo City, NM

15. DISTANCE FROM PROPOSED\*  
LOCATION TO NEAREST  
PROPERTY OR LEASE LINE, FT.  
(Also to nearest drig. unit line, if any) 800'

18. DISTANCE FROM PROPOSED LOCATION\*  
TO NEAREST WELL, DRILLING, COMPLETED,  
OR APPLIED FOR, ON THIS LEASE, FT. 400'

21. ELEVATIONS (Show whether DF, RT, GR, etc.)  
6080' GLORIFIED

23. PROPOSED CASING AND CEMENTING PROGRAM

SIZE OF HOLE	SIZE OF CASING	WEIGHT PER FOOT	SETTING DEPTH	QUANTITY OF CEMENT
12 1/4"	9 5/8"	32.3#	200'	130 cf. circulated
8 3/4"	7"	20.0#	2690'	850 cf circ. surface
6 1/4"	5 1/2" liner	23.0#	2880'	do not cement

The Fruitland coal formation will be completed.

A 3000 psi WP and 6000 psi test double gate preventer equipped with blind and pipe rams will be used for blow out prevention on this well.

This gas is dedicated.

The NE/4 of Section 1 is dedicated to this well.

RECEIVED

AUG 29 1988

OIL CON. DIV  
DIST. 3

IN ABOVE SPACE DESCRIBE PROPOSED PROGRAM: If proposal is to deepen or plug back, give data on present productive zone and proposed new productive zone. If proposal is to drill or deepen directionally, give pertinent data on subsurface locations and measured and true vertical depths. Give blowout preventer program, if any.

24. SIGNED [Signature] TITLE Regulatory Affairs DATE 08-05-88

(This space for Federal or State office use)

PERMIT NO. \_\_\_\_\_ APPROVAL DATE \_\_\_\_\_

APPROVED BY \_\_\_\_\_ TITLE \_\_\_\_\_ DATE \_\_\_\_\_

NOTED BY \_\_\_\_\_  
Held 2-104 for NGL  
hold to later

NMOCC

\*See Instructions On Reverse Side

Title 18 U.S.C. Section 1001, makes it a crime for any person knowingly and willfully to make to any department or agency of the United States any false, fictitious or fraudulent statements or representations as to any matter within its jurisdiction.

All distances must be from the outer boundaries of the Section.

Operator <b>Meridian Oil Inc.</b>		Lease <b>Howell C (SF-078596)</b>		Well No. <b>200</b>
Unit Letter <b>B</b>	Section <b>1</b>	Township <b>29 North</b>	Range <b>8 West</b>	County <b>San Juan</b>
Actual Footage Location of Well: <b>800</b> feet from the <b>North</b> line and <b>1350</b> feet from the <b>East</b> line				
Ground Level Elev. <b>6080'</b>	Producing Formation <b>Fruitland Coal</b>	Pool <b>Undesignated</b>	Dedicated Acreage: <b>160 161.05</b> Acres	

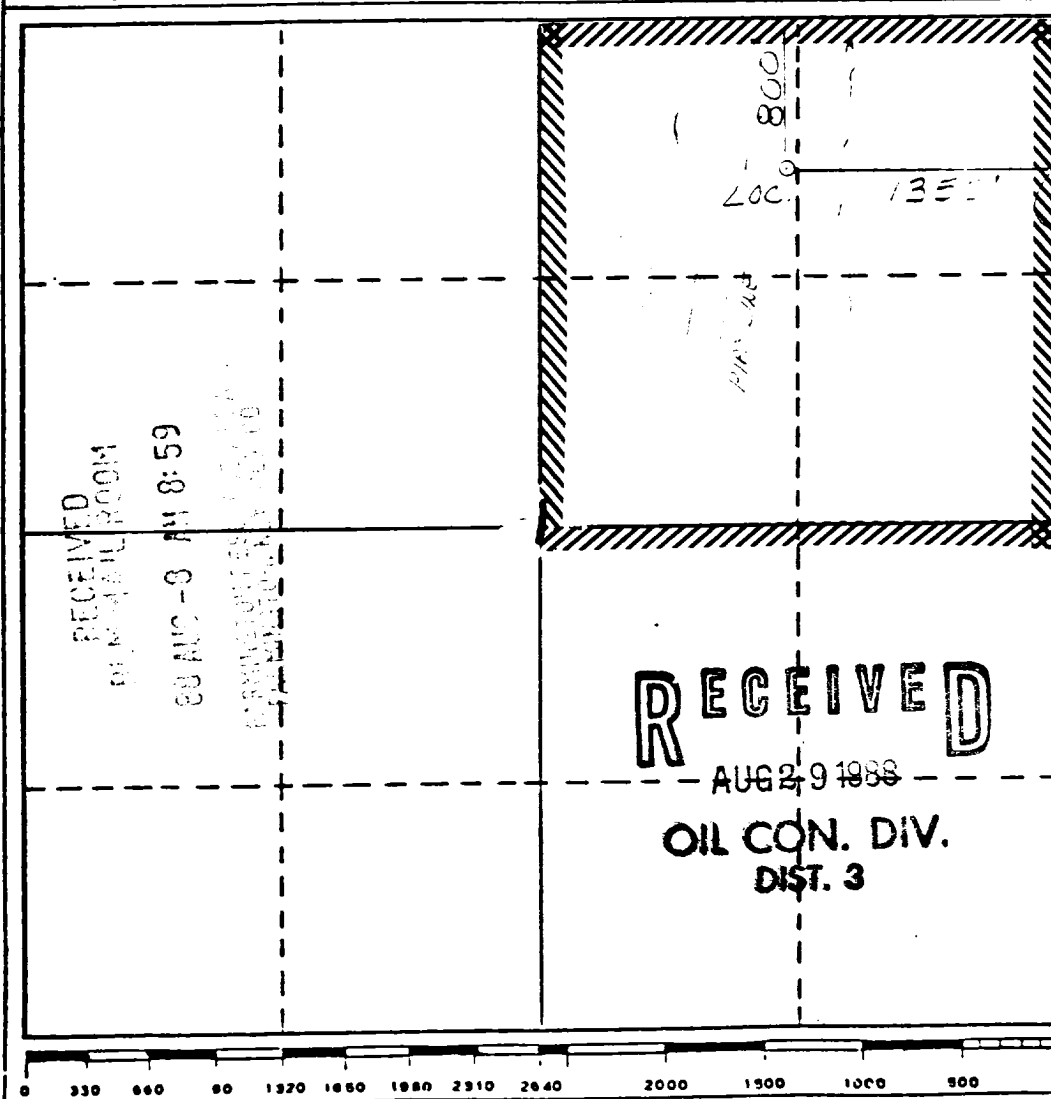
1. Outline the acreage dedicated to the subject well by colored pencil or hachure marks on the plat below.
2. If more than one lease is dedicated to the well, outline each and identify the ownership thereof (both as to working interest and royalty).
3. If more than one lease of different ownership is dedicated to the well, have the interests of all owners been consolidated by communitization, unitization, force-pooling, etc?

☐ Yes ☐ No If answer is "yes," type of consolidation \_\_\_\_\_

If answer is "no," list the owners and tract descriptions which have actually been consolidated. (Use reverse side of this form if necessary.) \_\_\_\_\_

No allowable will be assigned to the well until all interests have been consolidated (by communitization, unitization, forced-pooling, or otherwise) or until a non-standard unit, eliminating such interests, has been approved by the Division

\*Note: Non-standard Location due to terrain and pipelines.



CERTIFICATION

I hereby certify that the information contained herein is true and complete to the best of my knowledge and belief.

Name  
**Drilling Clerk**

Position  
**Meridian Oil Inc.**

Company  
**8-5-88**

Date

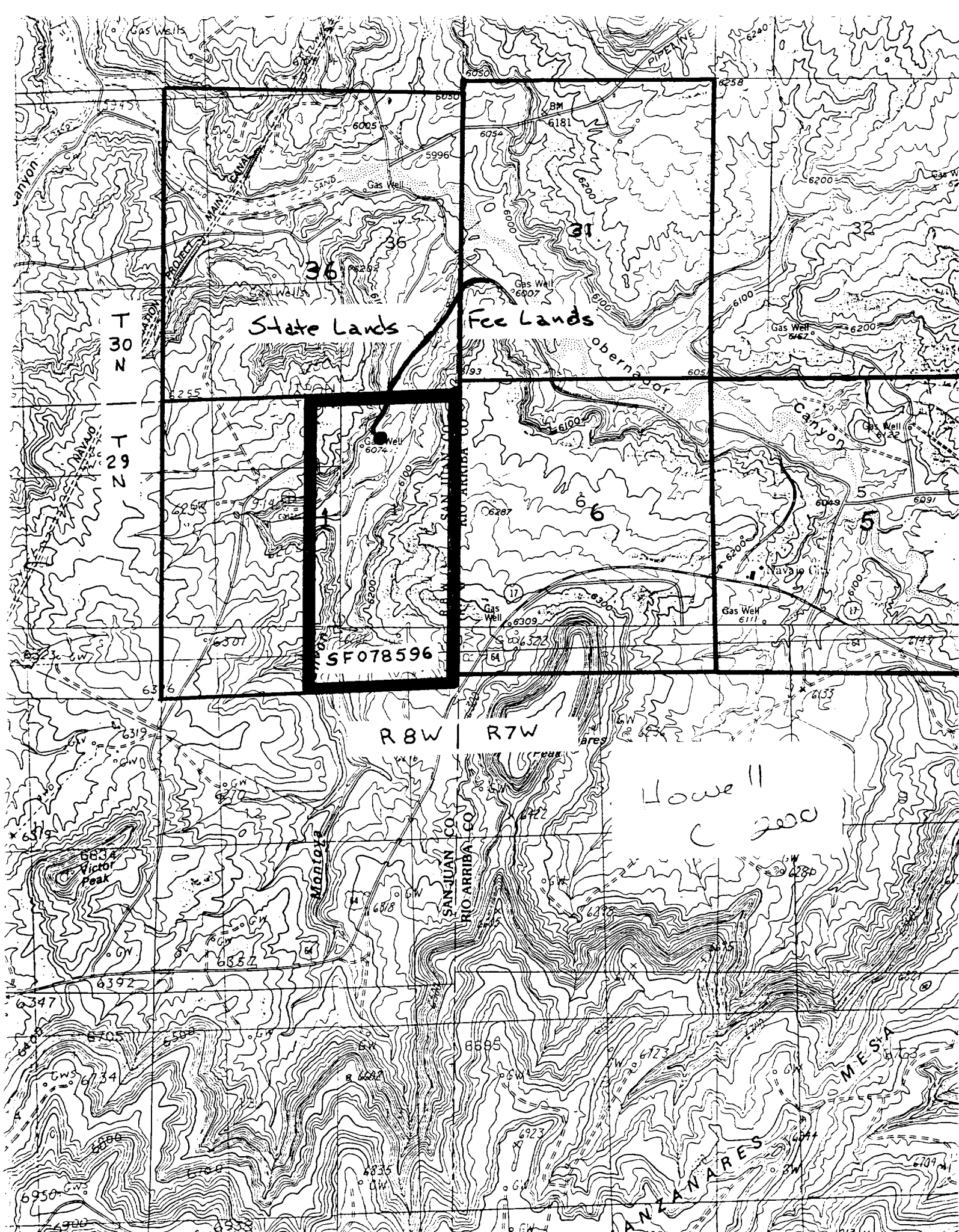
I hereby certify that the location shown on this plat was plotted from field notes of actual surveys made by me or under my supervision and that the same is true and correct to the best of my knowledge.

Date Surveyed  
**6-11-88**

Registered Professional Engineer and/or Land Surveyor

**Neale C. Edwards**

Certificate No.  
**6857**





STATE OF NEW MEXICO  
ENERGY AND MINERALS DEPARTMENT  
OIL CONSERVATION DIVISION  
AZTEC DISTRICT OFFICE

1000 RIO BRAZOS ROAD  
AZTEC, NEW MEXICO 87410  
(505) 334-6178

OIL CONSERVATION DIVISION  
BOX 2088  
SANTA FE, NEW MEXICO 87501

DATE 8-4-88

RE: Proposed MC \_\_\_\_\_  
Proposed DIIC \_\_\_\_\_  
Proposed NSL X \_\_\_\_\_  
Proposed SWD \_\_\_\_\_  
Proposed WFX \_\_\_\_\_  
Proposed PMX \_\_\_\_\_

Gentlemen:

I have examined the application dated 7-5-88  
for the MERIDIAN OIL HOWELL "C" #200 B-1-29N-80  
Operator Lease and Well No. Unit, S-T-R

and my recommendations are as follows:

Approved  
\_\_\_\_\_  
\_\_\_\_\_  
\_\_\_\_\_  
\_\_\_\_\_  
\_\_\_\_\_

Yours truly,

E. Bunch

✓ IT  
MERIDIAN OIL

July 1, 1988

Mr. William LeMay  
New Mexico Oil Conservation Division  
Post Office Box 2088  
Santa Fe, New Mexico 87501

Dear Mr. LeMay:

This is a request for administrative approval for an unorthodox gas well location in the Undesignated Fruitland Coal Pool.

It is intended to locate the Meridian Oil Inc.'s Howell C #200 at 800' from the North line and 1350' from the East line of Section 1, T-29-N, R-8-W, San Juan County, New Mexico.

Extremely rough terrain and pipelines makes it impossible to build an orthodox location in the northeast quarter of this section.

A copy of this application is being submitted to all offset operators by certified mail with a request that they furnish your Santa Fe office with a Waiver of Objection, and return one copy to this office.

Plats showing the proposed well location and the terrain in Section 1, along with an ownership plat, are attached.

Sincerely yours,



Peggy Doak

encl.

WAIVER

\_\_\_\_\_ hereby waives objection to Meridian Oil Inc.'s application for an unorthodox location for their Howell C #200 as proposed above.

By: \_\_\_\_\_

Date: \_\_\_\_\_

cc: Tenneco Oil  
Northwest Pipeline  
Southland Royalty

RECEIVED  
JUL 05 1988  
OIL CON. DIV.  
DIST. 3

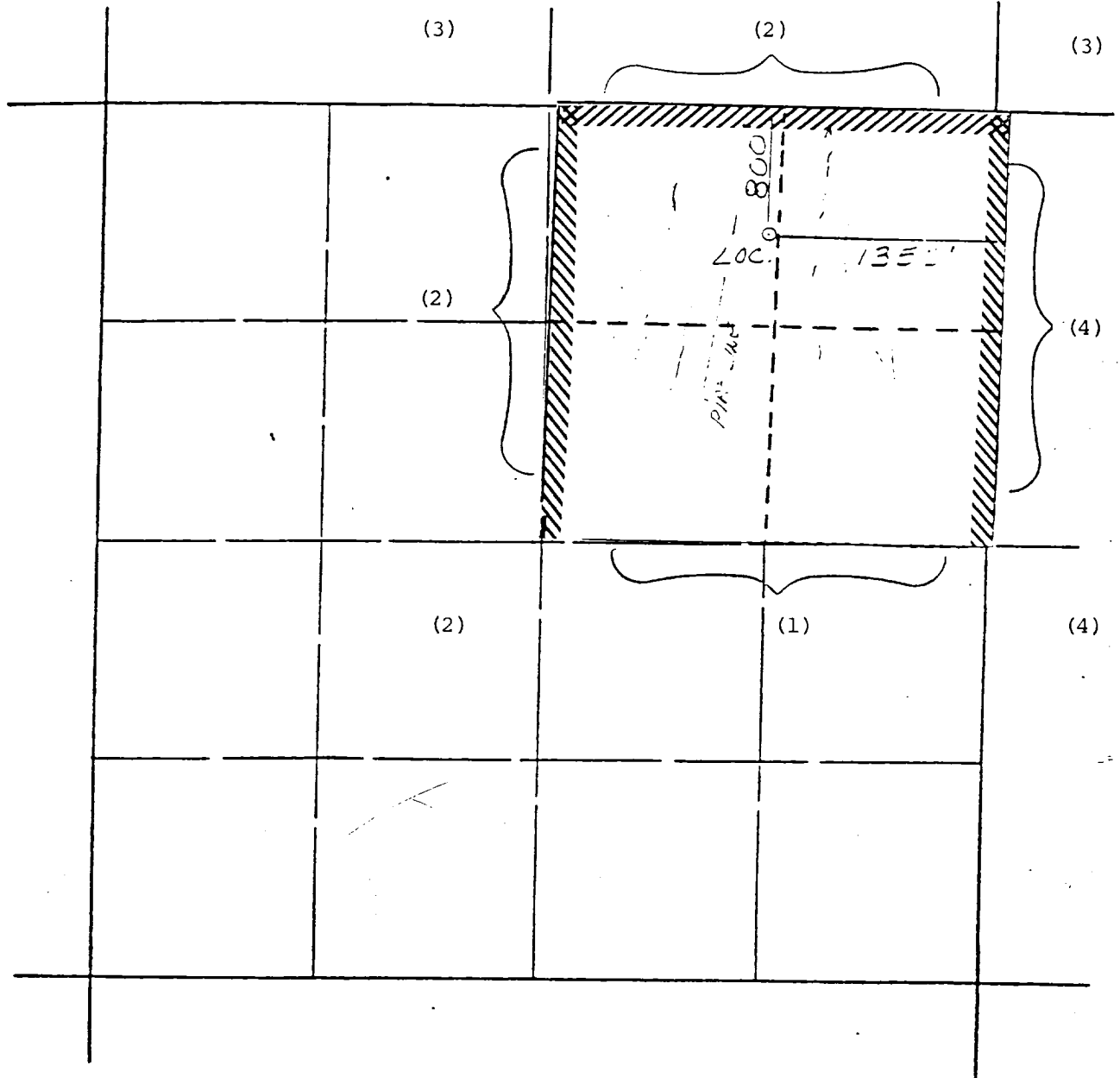
# MERIDIAN OIL INC.

Well Name Howell C #200, Undesignated Fruitland

Footage----- 800' FNL; 1350' FEL

## APPLICATION FOR NON-STANDARD LOCATION

County San Juan State New Mexico Section 1 Township 29N Range 8W



REMARKS: OFFSET OPERATORS

(1) Meridian Oil Inc.

(2) Tenneco Oil Company

(3) Northwest Pipeline Corporation

(4) Southland Royalty Company

All distances must be from the outer boundaries of the Section.

Operator <b>Meridian Oil Inc.</b>		Lease <b>Howell C (SF-078596)</b>		Well No. <b>200</b>
Unit Letter <b>B</b>	Section <b>1</b>	Township <b>29 North</b>	Range <b>8 West</b>	County <b>San Juan</b>

Actual Footage Location of Well: <b>800</b> feet from the <b>North</b> line and <b>1350</b> feet from the <b>East</b> line				
Ground Level Elev. <b>6080'</b>	Producing Formation <b>Fruitland Coal</b>	Pool <b>Undesignated</b>	Dedicated Acreage: <b>160</b> Acres	

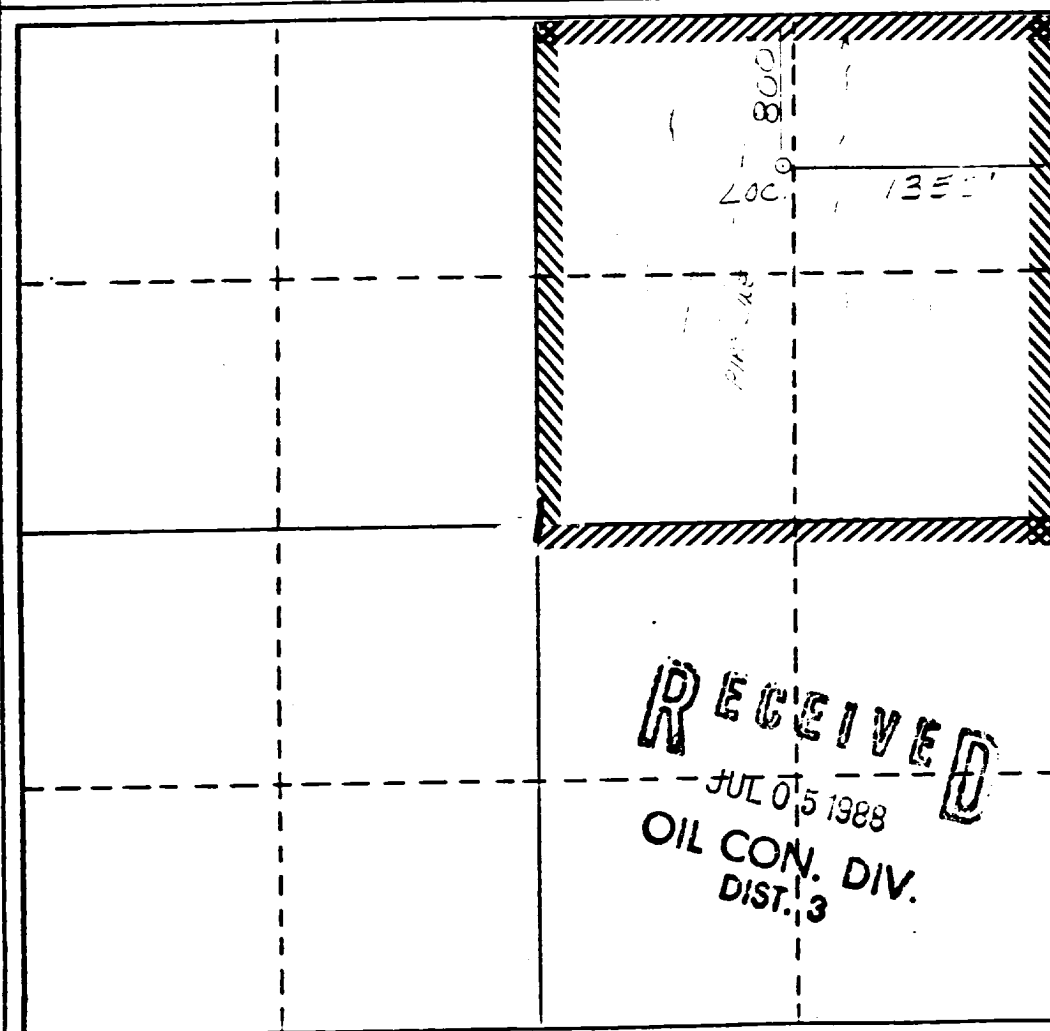
1. Outline the acreage dedicated to the subject well by colored pencil or hachure marks on the plat below.
2. If more than one lease is dedicated to the well, outline each and identify the ownership thereof (both as to working interest and royalty).
3. If more than one lease of different ownership is dedicated to the well, have the interests of all owners been consolidated by communitization, unitization, force-pooling, etc?

☐ Yes ☐ No If answer is "yes," type of consolidation \_\_\_\_\_

If answer is "no," list the owners and tract descriptions which have actually been consolidated. (Use reverse side of this form if necessary.) \_\_\_\_\_

No allowable will be assigned to the well until all interests have been consolidated (by communitization, unitization, forced-pooling, or otherwise) or until a non-standard unit, eliminating such interests, has been approved by the Division

\*Note: Non-standard Location due to terrain and pipelines.



**RECEIVED**  
JUL 05 1988  
OIL CON. DIV.  
DIST. 3

**CERTIFICATION**

I hereby certify that the information contained herein is true and complete to the best of my knowledge and belief.

Name  
**Drilling Clerk**

Position  
**Meridian Oil Inc.**

Company

Date

I hereby certify that the location shown on this plat was plotted from field notes of actual surveys made by me or under my supervision and that the same is true and correct to the best of my knowledge.

Date Surveyed  
**6-11-88**

Registered Professional Engineer  
and/or Land Surveyor

**Neale C. Edwards**

Certificate No.  
**6857**

0 320 640 960 1280 1600 1920 2240 2560 2880 3200 3520 3840 4160 4480 4800 5120 5440 5760 6080 6400

K-8-22N  
+ 22N

