

UNITED STATES
DEPARTMENT OF THE INTERIOR
BUREAU OF LAND MANAGEMENT

APPLICATION FOR PERMIT TO DRILL, DEEPEN, OR PLUG BACK

1a. TYPE OF WORK
DRILL ☒ DEEPEN ☐ PLUG BACK ☐

b. TYPE OF WELL
OIL WELL ☐ GAS WELL ☒ OTHER ☐

2. NAME OF OPERATOR
Meridian Oil Inc.

3. ADDRESS OF OPERATOR
PO Box 4289, Farmington, NM 87499

4. LOCATION OF WELL (Report location clearly and in accordance with any State requirements.)
At surface 790'N, 1840'W
At proposed prod. zone

14. DISTANCE IN MILES AND DIRECTION FROM NEAREST TOWN OR POST OFFICE*
10 miles from Blanco, NM

15. DISTANCE FROM PROPOSED*
LOCATION TO NEAREST
PROPERTY OR LEASE LINE, FT.
(Also to nearest drilg. unit line, if any)
790'

16. NO. OF ACRES IN LEASE
420

17. NO. OF ACRES ASSIGNED
TO THIS WELL 160.00

18. DISTANCE FROM PROPOSED LOCATION*
TO NEAREST WELL, DRILLING, COMPLETED,
OR APPLIED FOR, ON THIS LEASE, FT.
300'

19. PROPOSED DEPTH
2970'

20. ROTARY OR CABLE TOOLS
Rotary

21. ELEVATIONS (Show whether DE, RT, GR, etc.)
6369' GL
This action is subject to technical and
procedural review pursuant to 43 CFR 3123.3.

22. APPROX. DATE WORK WILL START*

23. This action is subject to technical and procedural review pursuant to 43 CFR 3123.3.
and appeal pursuant to 43 CFR 3123.3.
PROPOSED DRILLING AND CEMENTING PROGRAM SUBJECT TO COMPLIANCE WITH ATTACHED

| SIZE OF HOLE | SIZE OF CASING | WEIGHT PER FOOT | SETTING DEPTH | GENERAL REQUIREMENTS BY QUANTITIES OF CEMENT |
|--------------|----------------|-----------------|---------------|---|
| 12 1/4" | 9 5/8" | 32.3# | 200' | 130 cf. circulated |
| 8 3/4" | 7" | 20.0# | 2890' | 252 cf cover Ojo Alamo |
| 6 1/4" | 5 1/2" liner | 23.0# | 2970' | do not cement |

The Fruitland coal formation will be completed.

A 3000 psi WP and 6000 psi test double gate preventer equipped with
blind and pipe rams will be used for blow out prevention on this well.

This gas is dedicated.

The NW/4 of Section 26 is dedicated to this well.

RECEIVED
00711 1005
OIL CO. & GAS
DIST. 3

IN ABOVE SPACE DESCRIBE PROPOSED PROGRAM: If proposal is to deepen or plug back, give data on present productive zone and proposed new productive zone. If proposal is to drill or deepen directionally, give pertinent data on subsurface locations and measured and true vertical depths. Give blowout preventer program, if any.

24. SIGNED [Signature] TITLE Regulatory Affairs DATE 09-30-88

(This space for Federal or State office use)

PERMIT NO. _____ APPROVAL DATE _____

"Approved" stamp with date 09-30-88
CONDITIONS OF APPROVAL, IF ANY:
not warrant that the land
holds legal title to the land
or title to the land
NMOCC
*See Instructions On Reverse Side
Title 18 U.S.C. Section 1001, makes it a crime for any person knowingly and willfully to make to any department or agency of the
United States any false, fictitious or fraudulent statements or representations as to any matter within its jurisdiction.

All distances must be from the outer boundaries of the Section.

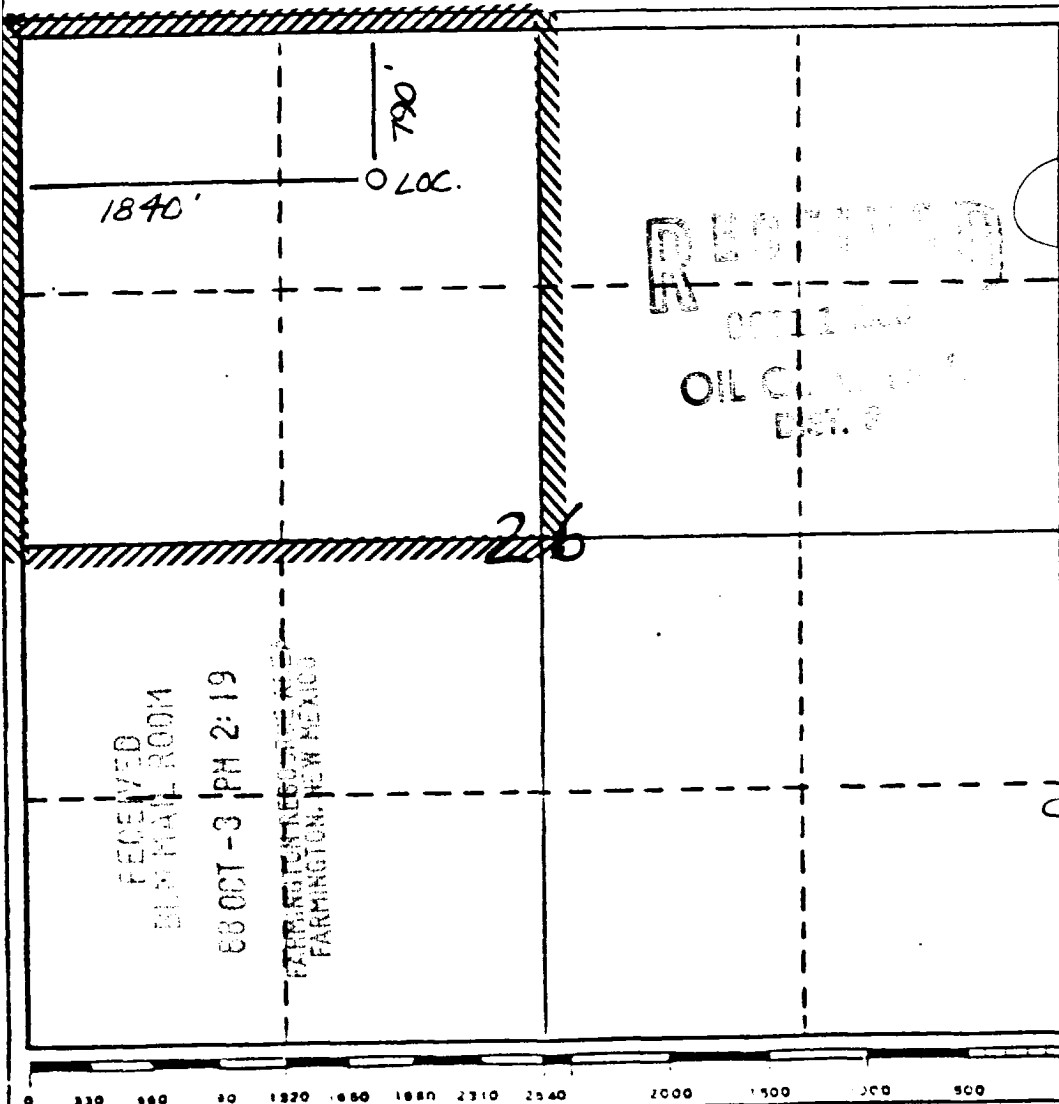
| | | | | |
|---|--|--------------------------------------|--|---------------------------|
| Operator Meridian Oil Inc. | | Lease Hardie A (SF-078416) | | Well No. 211 |
| Unit Letter C | Section 26 | Township 29 North | Range 6 West | County San Juan |
| Actual Footage Location of Wells 790 feet from the North line and 1840 feet from the West line | | | | |
| Ground Level Elev. 6369 | Producing Formation Fruitland Coal | Pool Undesignated | Dedicated Acreage: 160 Acres | |

1. Outline the acreage dedicated to the subject well by colored pencil or hachure marks on the plat below.
2. If more than one lease is dedicated to the well, outline each and identify the ownership thereof (both as to working interest and royalty).
3. If more than one lease of different ownership is dedicated to the well, have the interests of all owners been consolidated by communitization, unitization, force-pooling, etc?

☐ Yes ☐ No If answer is "yes," type of consolidation _____

If answer is "no," list the owners and tract descriptions which have actually been consolidated. (Use reverse side of this form if necessary.) _____

No allowable will be assigned to the well until all interests have been consolidated (by communitization, unitization, forced-pooling, or otherwise) or until a non-standard unit, eliminating such interests, has been approved by the Division



CERTIFICATION

I hereby certify that the information contained herein is true and complete to the best of my knowledge and belief.

Name
Regulatory Affairs

Position
Meridian Oil Inc.

Company
Meridian Oil Inc.

Date

I hereby certify that the location shown on this plat was planned from field notes of actual surveys made by me or under my supervision, and that the same is true and correct to the best of my knowledge and belief.

Date Surveyed

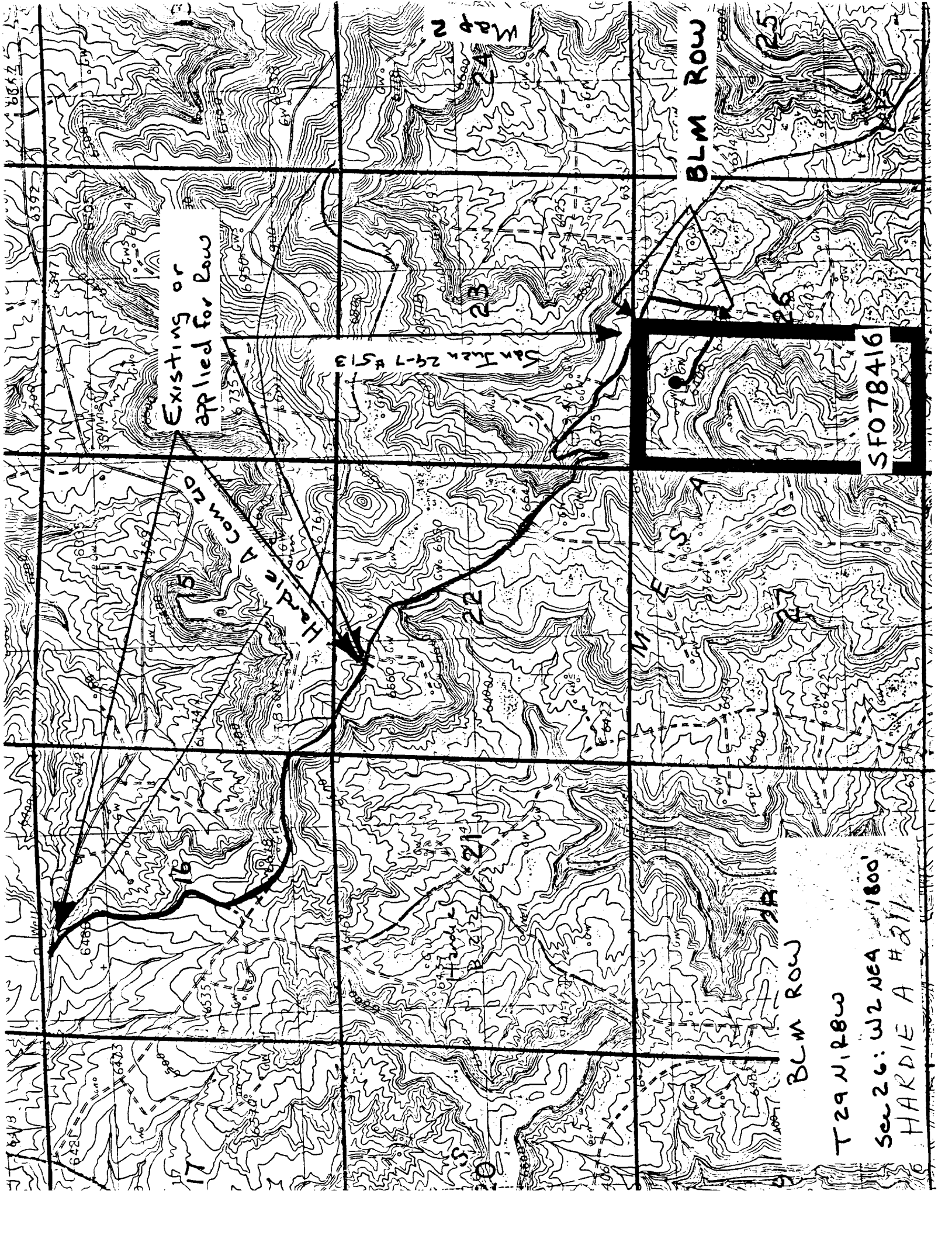
8-27-88

Registered Professional Engineer and/or Land Surveyor

Neale C. Edwards

Certificate No.

6857



Existing or
applied for Row

San Juan 24-7 R 513

Hardie A Com 210

BLM ROW

25

SFO78416

BLM ROW

T29 N, R8W

Sec 26: W2 NE4 1800'

HARDIE A #211