

UNITED STATES
DEPARTMENT OF THE INTERIOR

BUREAU OF LAND MANAGEMENT

Form approved.
Budget Bureau No.1004-0136
Expires: December 31, 1991

APPLICATION FOR PERMIT TO DRILL OR DEEPEN

1a. TYPE OF WORK

DRILL ☒

DEEPEN ☐

b. TYPE OF WELL

OIL WELL ☐

GAS WELL ☒

Other ☐

SINGLE ZONE ☒

MULTIPLE ZONE ☐

2. NAME OF OPERATOR

AMOCO PRODUCTION COMPANY

Attention:

Gail M. Jefferson

3. ADDRESS AND TELEPHONE NO.

P.O. BOX 800, DENVER, COLORADO 80201 (303) 830-6157

4. LOCATION OF WELL (Report location clearly and in accordance with any State requirements. *)

At surface

2445' FSL

1115' FWL

At proposed prod. zone

Unit L

14. DISTANCE IN MILES AND DIRECTION FROM NEAREST TOWN OR POST OFFICE*

19 miles from the town of Bloomfield, New Mexico

15. DISTANCE FROM PROPOSED* LOCATION TO NEAREST PROPERTY OR LEASE LINE, FT. (Also to nearest drlg. unit line, if any)

16. NO. OF ACRES IN LEASE

1440.00

17. NO. OF ACRES ASSIGNED TO THIS WELL

W/ 320.00

18. DISTANCE FROM PROPOSED LOCATION* TO NEAREST WELL, DRILLING, COMPLETED, OR APPLIED FOR, ON THIS LEASE, FT.

19. PROPOSED DEPTH

5724'

20. ROTARY OR CABLE TOOLS

Rotary

21. ELEVATIONS (Show whether DF, RT, GR., etc.)

This action is subject to technical and procedural review pursuant to 43 CFR 3165.3 and appeal pursuant to 43 CFR 3165.4.

6334' GL

22. APPROX. DATE WORK WILL START*

12-01-1998

PROPOSED CASING AND CEMENTING PROGRAM

SIZE OF HOLE	GRADE, SIZE OF CASING	WEIGHT PER FOOT	SETTING DEPTH	QUANTITY OF CEMENT
12.25"	K-55 9.625	36#	250'	172 cu. ft. CI B to surface
8.75"	K-55 7.000	20#	3094'	829 cu. ft. CI B to surface
6.25"	K-55 4.500	10.5#	5724'	397 cu. ft. CI B to 2844'

Notice of Staking submitted as the Roelofs B #3B on 9/15/98:

Lease Description: T29N-R8W
Sec. 9: E/2
Sec. 10: SE/4
Sec. 15: All
Sec. 22: E/2

containing 1440.00 acres, more or less

DRILLING OPERATIONS AUTHORIZED ARE
SUBJECT TO COMPLIANCE WITH ATTACHED
"GENERAL REQUIREMENTS"

RECEIVED
OCT 29 1998
OIL CON. DIV.
DIST. 3

IN ABOVE SPACE DESCRIBE PROPOSED PROGRAM: If proposal is to deepen, give data on present productive zone and proposed new productive zone. If proposal is to drill or deepen directionally, give pertinent data on subsurface locations and measured and true vertical depths. Give blowout preventer program, if any.

24.

SIGNED

Gail M. Jefferson

TITLE Sr. Admin. Staff Asst.

DATE 10-14-1998

(This space for Federal or State office use)

PERMIT NO.

APPROVAL DATE

Application approval does not warrant or certify that the applicant holds legal or equitable title to these rights in the subject lease which would entitle the applicant to conduct operations thereon.

CONDITIONS OF APPROVAL, IF ANY:

/S/ Duane W. Spencer

APPROVED BY

TITLE

DATE

OCT 27 1998

NSL-41400

*See Instructions On Reverse Side

Title 18 U.S.C. Section 1001, makes it a crime for any person knowingly and willfully to make to any department or agency of the United States any false, fictitious or fraudulent statements or representations as to any matter within its jurisdiction.

NMOCD

State of New Mexico
Energy, Minerals & Natural Resources Department
District II
PO Box 1980, Hobbs NM 88241-1980
District III
PO Drawer KK, Artesia, NM 87211-0719
District IV
1000 Rio Brazos Rd., Aztec, NM 87410
District V
PO Box 2088, Santa Fe, NM 87504-2088

State of New Mexico
Energy, Minerals & Natural Resources Department
OIL CONSERVATION DIVISION
PO Box 2088
Santa Fe, NM 87504-2088

Form C-102
Revised February 21, 1994
Instructions on back
Submit to Appropriate District Office
State Lease - 4 Copies
Fee Lease - 3 Copies

000016 0010:01 ☐ AMENDED REPORT

WELL LOCATION AND ACREAGE DEDICATION PLAT

1 API Number 50-045-29711		2 Pool Code 72319		3 Pool Name Blanco Mesaverde		
4 Property Code 993		5 Property Name ROELOFS B			6 Well Number # 3B	
7 OGRID No. 000778		8 Operator Name AMOCO PRODUCTION COMPANY			9 Elevation 6334	

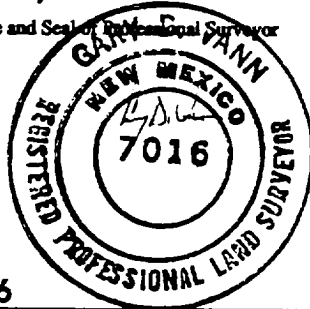
10 Surface Location

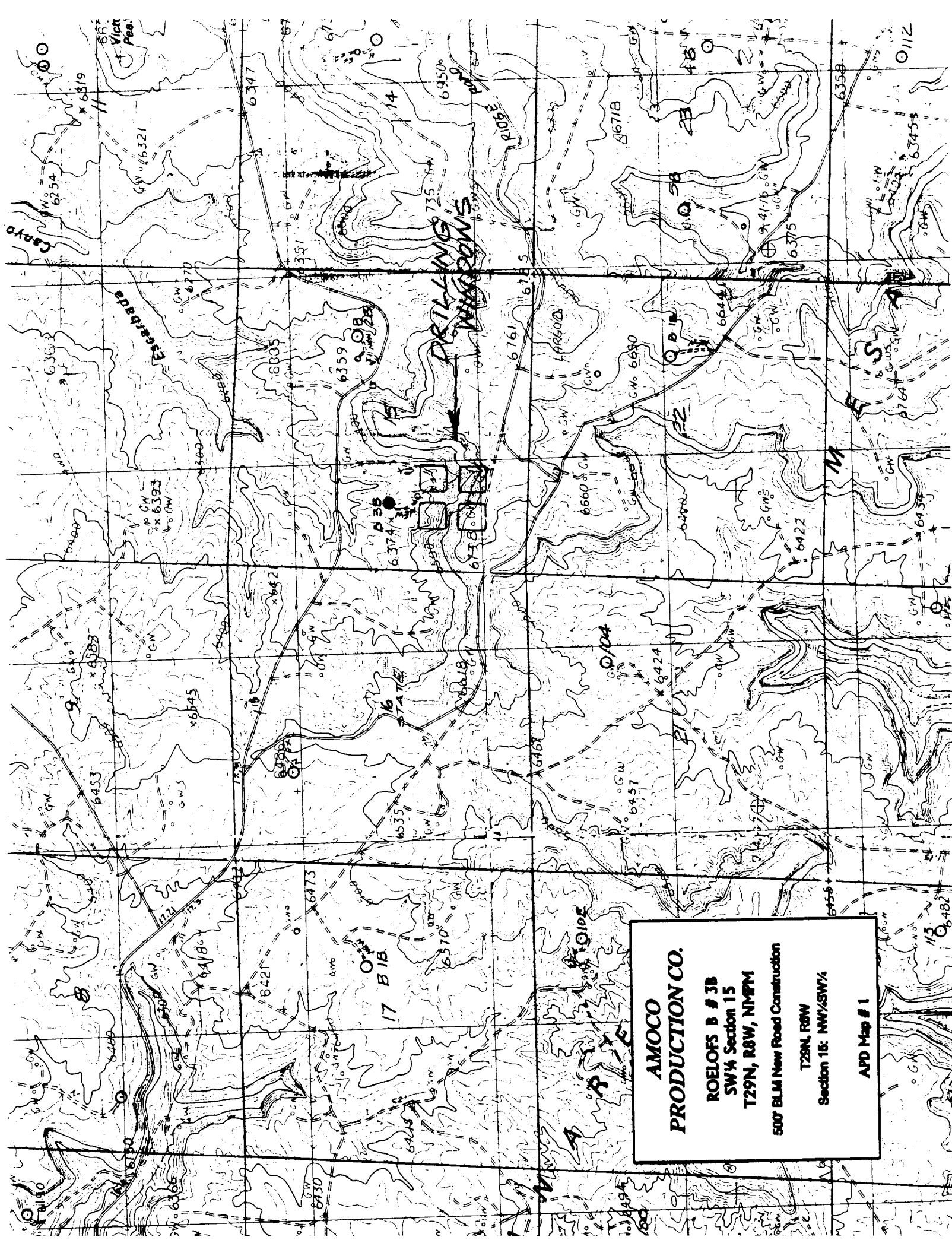
UL or Lot No. L	Section 15	Township 29 N	Range 8 W	Lot Idn.	Feet from the 2445	North/South line SOUTH	Feet from the 1115	East/West line WEST	County SAN JUAN
--------------------	---------------	------------------	--------------	----------	-----------------------	---------------------------	-----------------------	------------------------	--------------------

11 Bottom Hole Location If Different From Surface

12 UL or lot no.	Section	Township	Range	Lot Idn.	Feet from the	North/South line	Feet from the	East/West line	County
13 Dedicated Acres 320.00		14 Joint or Infill		15 Consolidation Code		16 Order No.			

NO ALLOWABLE WILL BE ASSIGNED TO THIS COMPLETION UNTIL ALL INTEREST HAVE BEEN CONSOLIDATED
OR A NON-STANDARD UNIT HAS BEEN APPROVED BY THE DIVISION

16 3B 5234(R) 1115' 2445' 2 5205(R)		15 OIL CON. DIV. OCT 29 1998 5160(R)		17 OPERATOR CERTIFICATION I hereby certify that the information contained herein is true and complete to the best of my knowledge and belief. Signature Gail M. Jefferson Printed Name Sr. Admin. Staff Asst. Title 9/10/98 Date	
				18 SURVEYOR CERTIFICATION I hereby certify that the well location shown on this plat was plotted from field notes of actual surveys made by me or under my supervision, and that the same is true and correct to the best of my belief. August 27, 1998 Date of Survey Signature and Seal of Professional Surveyor  7016 Certificate Number	



**AMOCO
PRODUCTION CO.**

**ROELOFS B # 3B
SW 1/4 Section 15
T29N, R8W, N16PM**

500' BLM New Road Construction

**T29N, R8W
Section 15: NW 1/4 SW 1/4**

APD Map # 1



NEW MEXICO ENERGY, MINERALS
& NATURAL RESOURCES DEPARTMENT

OIL CONSERVATION DIVISION
2040 South Pacheco Street
Santa Fe, New Mexico 87505
(505) 827-7131

October 8, 1998

Amoco Production Company
P. O. Box 800
Denver, Colorado 80201-0800
Attention: Pamela Staley

RECEIVED
OCT 15 1998

OIL CON. DIV. Administrative Order NSL-4140
DIST. 3

Dear Ms. Staley:

Reference is made to your application dated September 15, 1998, which was received by the New Mexico Oil Conservation Division ("Division") in Santa Fe on September 18, 1998, for an exception to the well location requirements provided within the "Special Rules and Regulations for the Blanco-Mesaverde Pool," as promulgated by Division Order No. R-10987, for a non-standard gas well location in an existing standard 320-acre stand-up gas spacing and proration unit for the Blanco-Mesaverde Pool comprising the W/2 of Section 15, Township 29 North, Range 8 West, NMPM, San Juan County, New Mexico. This unit is currently dedicated to Amoco Production Company's: (i) Roelofs "B" Well No. 3 (API No. 30-045-08208), the initial well on this unit, located at a standard gas well location 1090 feet from the South line and 890 feet from the West line (Unit M) of Section 15; and, (ii) Roelofs "B" Well No. 3-A (API No. 30-045-22365), located at a standard infill gas well location 1060 feet from the North line and 880 feet from the West line (Unit D) of Section 15.

The application has been duly filed under the provisions of Division Rules 104.F and 605.B of the General Rules and Regulations of the New Mexico Oil Conservation Division ("Division").

By the authority granted me under the provisions of Division Rule 104.F(2), the following described well to be drilled at an unorthodox gas well location in Section 15 is hereby approved:

Roelofs "B" Well No. 3-B
2445' FSL & 1115' FWL (Unit L).

Further, Amoco Production Company is authorized to dedicate Blanco-Mesaverde gas production on the subject unit from the proposed Roelofs "B" Well No. 3-B with the two existing Roelofs "B" Well Nos. 3 and 3-A. These three wells and the existing 320-acre unit will be subject to all existing rules, regulations, policies, and procedures applicable to prorated gas pools in Northwest, New Mexico.

Sincerely,

Lori Wrotenbery
Director

LW/MES/kv

cc: New Mexico Oil Conservation Division - Aztec /
U. S. Bureau of Land Management - Farmington



Amoco Exploration and Production

Amoco Building
1670 Broadway
Post Office Box 800
Denver, Colorado 80201-0800
(303) 830-4040

September 15, 1998

Ms. Lori Wrotenbery, Director
New Mexico Oil Conservation Division
2040 S. Pacheco Street
P.O. Box 6429
Santa Fe, NM 87505

Application For Unorthodox Location
Roelofs B #3B Well
2445' FSL & 1115' FWL
Unit L Section 15-T29N-R8W
W/2 Spacing Unit
Blanco Mesaverde Pool
San Juan County, New Mexico

RECEIVED
SEP 17 1998
OIL CON. DIV.
DIST. 3

Amoco Production Company hereby requests administrative approval for an unorthodox well location for the Roelofs B #3B well in the Blanco Mesaverde Pool. Amoco plans to drill this well at an unorthodox location as a third well in the existing spacing unit to access reserves which would otherwise be bypassed with the current well density. This well, as proposed, would be moving toward the center line of the spacing unit only and would be well within the standard 790 foot setback from the outer boundaries of the spacing unit. We are locating this well toward the center of the spacing unit, away from the parent and original infill, which would cause it to fall outside the traditional drilling windows for the Blanco Mesaverde Pool.

A copy of this application will be submitted to the offset operators by certified mail with a request that they furnish your Santa Fe office with a Waiver of Objection, and return one copy to this office. Attached are plats showing the location of the well, offset operators, and all wells drilled in the area.


Pamela W. Staley

Attachments

cc: Frank Chavez, Supervisor
NMOC District III
1000 Rio Brazos Road
Aztec, NM 87410

Mark Yamasaki, Amoco
Gail Jefferson, Amoco

WAIVER

_____ hereby waives objection to Amoco's application for an unorthodox well location for the Roelofs B #3B well described above.

By: _____

Date: _____

APPLICATION FOR APPROVAL OF UNORTHODOX LOCATION UNDER RULE 104-F

**Roelofs B #3B Well
2445' FSL & 1115' FWL
Unit L Section 15-T29N-R8W Blanco Mesaverde Pool**

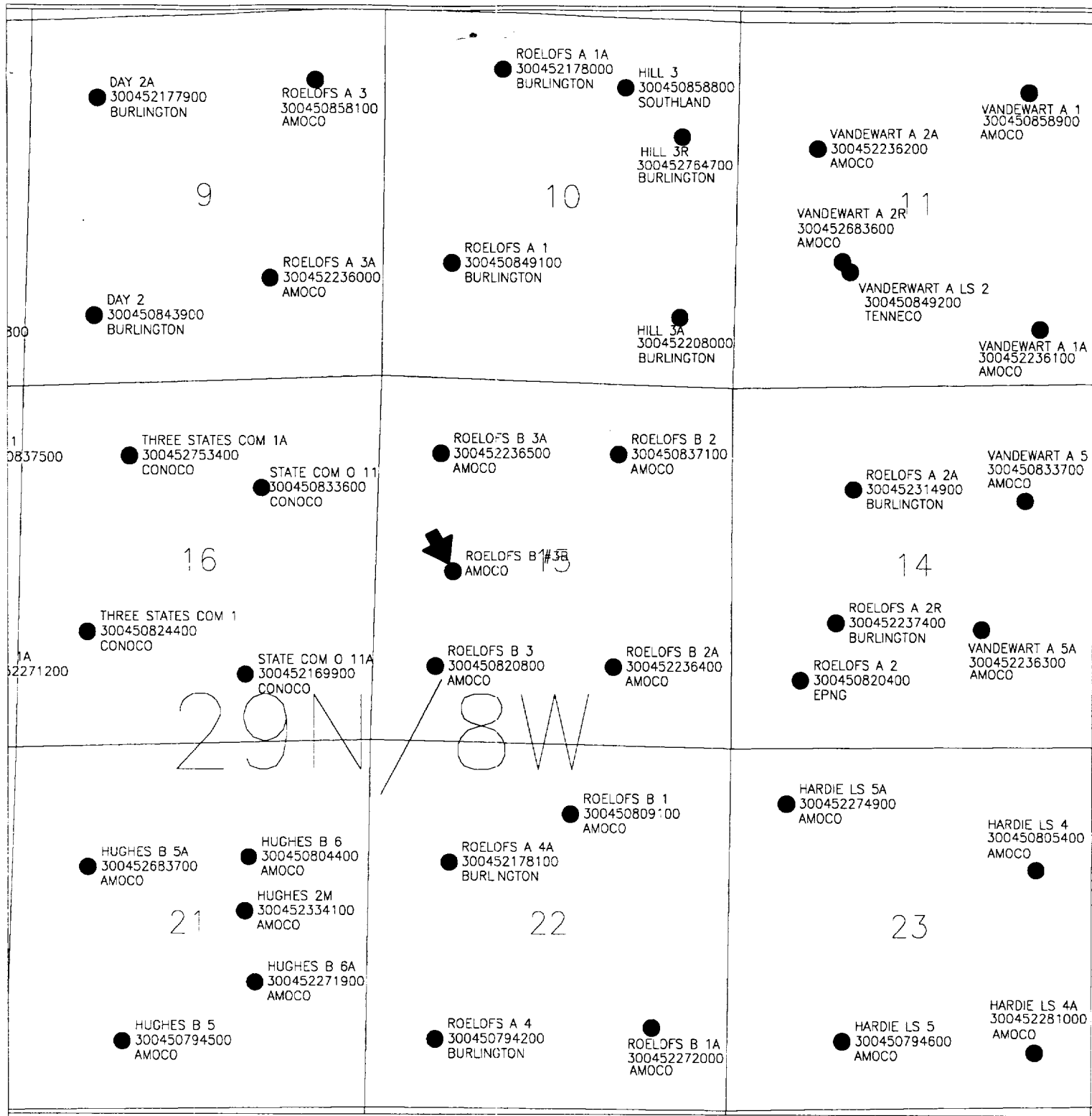
ATTACHMENTS:

- 9-SECTION PLAT SHOWING LOCATION OF ALL OFFSET WELLS
- FORM C-102 FOR MESAVERDE FORMATION
- LIST OF ALL OFFSET OPERATORS AND THEIR ADDRESSES

LIST OF ADDRESSES FOR OFFSET OPERATORS

1 Burlington Resources Oil and Gas Co.
P.O. Box 4289
Farmington, NM 87499

2 Conoco, Inc.
10 Desta Drive West
Midland, Texas 79705



AMOCO PRODUCTION COMPANY

ROELOFS B #3B - NEW DRILL
MESAVERDE - NINE SECTION PLAT
29N-8W-15NW/SW

ALC

9/14/98

Scale: 1"=3829.35'

District II
PO Drawer KK, Artesia, NM 87211-0719
District III
1000 Rio Brazos Rd., Aztec, NM 87410
District IV
PO Box 2088, Santa Fe, NM 87504-2088

U.S. DEPARTMENT OF THE INTERIOR
BUREAU OF LAND MANAGEMENT
OIL CONSERVATION DIVISION
PO Box 2088
Santa Fe, NM 87504-2088

Revised February 21, 1994
Instructions on back
Submit to Appropriate District Office
State Lease - 4 Copies
Fee Lease - 3 Copies

☐ AMENDED REPORT

WELL LOCATION AND ACREAGE DEDICATION PLAT

1 API Number		2 Pool Code 72319		3 Pool Name Blanco Mesaverde	
4 Property Code		5 Property Name ROELOFS B			6 Well Number # 3B
7 OGRID No. 000778		8 Operator Name AMOCO PRODUCTION COMPANY			9 Elevation 6334

10 Surface Location

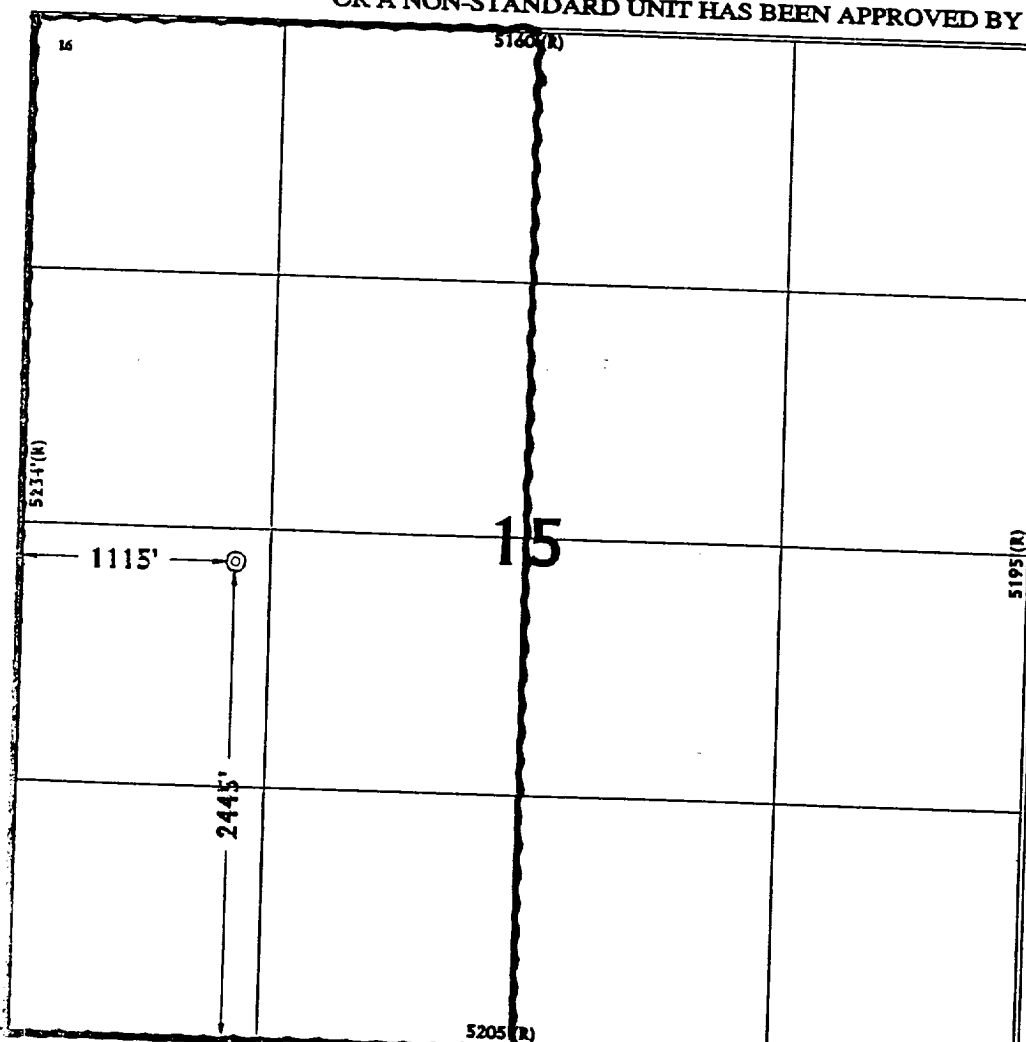
UL or Lot No. L	Section 15	Township 29 N	Range 8 W	Lot Idn	Feet from the 2445	North/South line SOUTH	Feet from the 1115	East/West line WEST	County SAN JUAN
--------------------	---------------	------------------	--------------	---------	-----------------------	---------------------------	-----------------------	------------------------	--------------------

11 Bottom Hole Location If Different From Surface

12 UL or lot no.	Section	Township	Range	Lot Idn	Feet from the	North/South line	Feet from the	East/West line	County
------------------	---------	----------	-------	---------	---------------	------------------	---------------	----------------	--------

13 Dedicated Acres 320.00	14 Joint or Infill	15 Consolidation Code	16 Order No.
------------------------------	--------------------	-----------------------	--------------

NO ALLOWABLE WILL BE ASSIGNED TO THIS COMPLETION UNTIL ALL INTEREST HAVE BEEN CONSOLIDATED
OR A NON-STANDARD UNIT HAS BEEN APPROVED BY THE DIVISION



17 OPERATOR CERTIFICATION

I hereby certify that the information contained herein is true and complete to the best of my knowledge and belief.

Gail M. Jefferson
Signature

Gail M. Jefferson
Printed Name

Sr. Admin. Staff Asst.
Title

9/10/98
Date

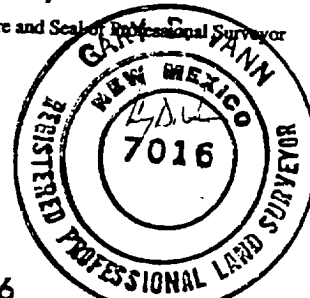
18 SURVEYOR CERTIFICATION

I hereby certify that the well location shown on this plat was plotted from field notes of actual surveys made by me or under my supervision, and that the same is true and correct to the best of my belief.

August 27, 1998

Date of Survey

Signature and Seal of Professional Surveyor



7016
Certificate Number