

GEOLOGICAL SURVEY

U. LEASE DESIGNATION AND SERIAL NO.

SF-080000

6. IF INDIAN, ALLOTTEE OR TRIBE NAME

7. UNIT AGREEMENT NAME

8. FARM OR LEASE NAME

Florance

9. WELL NO.

#24A

10. FIELD AND POOL OR WILDCAT

Blanco Mesa Verde

11. SEC., T., R., M., OR BLK. AND SURVEY OR AREA

Sec 23, T29N, R9W

12. COUNTY OR PARISH 13. STATE

San Juan New Mexico

APPLICATION FOR PERMIT TO DRILL, DEEPEN, OR PLUG BACK

1a. TYPE OF WORK  
 DRILL  DEEPEN  PLUG BACK

b. TYPE OF WELL  
 OIL WELL  GAS WELL  OTHER   
 SINGLE ZONE  MULTIPLE ZONE

2. NAME OF OPERATOR  
 TENNECO OIL COMPANY

3. ADDRESS OF OPERATOR  
 1860 Lincoln St., Suite 1200, Denver, Colorado 80295

4. LOCATION OF WELL (Report location clearly and in accordance with any State requirements.)  
 At surface  
 At proposed prod. zone 885 'FSL and 1190'EI Unit P

14. DISTANCE IN MILES AND DIRECTION FROM NEAREST TOWN OR POST OFFICE\*  
 Turn of Hwy 17 on Canyon Largo Pipeline Rd for 3 miles. Turn right on Lease Rd. 1 mi. Turn left 1/4 mi. to site.

15. DISTANCE FROM PROPOSED\* LOCATION TO NEAREST PROPERTY OR LEASE LINE, FT. (Also to nearest drlg. unit line, if any)

16. NO. OF ACRES IN LEASE  
 + 320

17. NO. OF ACRES ASSIGNED TO THIS WELL  
 E/+320 296.50

18. DISTANCE FROM PROPOSED LOCATION\* TO NEAREST WELL, DRILLING, COMPLETED, OR APPLIED FOR, ON THIS LEASE, FT.

19. PROPOSED DEPTH  
 +5044'

20. ROTARY OR CABLE TOOLS  
 Rotary

21. ELEVATIONS (Show whether DF, RT, GR, etc.)  
 6031'GL

22. APPROX. DATE WORK WILL START\*  
 May 15, 1977

PROPOSED CASING AND CEMENTING PROGRAM

SIZE OF HOLE	SIZE OF CASING	WEIGHT PER FOOT	SETTING DEPTH	QUANTITY OF CEMENT
12-1/4"	9-5/8"	36#	+ 200'	Suff. to circulate to surface
8-3/4"	7"	23#	+ 2844'	Suff. to cement to surface csg.
6-1/8"	4-1/2"	10.5#	+ 2644'-5044'	Suff. to cement to 7" csg.

1- The geologic name of this surface formation is ~~(San Jose)~~ Nacimiento

2&3 Formation Tops (Estimated)

Pictured Cliffs	+ 2,554	'Possible oil or gas producer
Cliff House	+ 4,224	'Possible oil or gas producer
Menefee	+ 4,364	'Possible oil or gas producer
Point Lookout	+ 4,824	'Possible oil or gas producer
Mancos Shale	+ 4,924	'

4- Run 9-5/8" OD, K-55 new casing to +200' and circulate cement to surface. Run 7" OD, 23#, K-55 new casing to +2844' and circulate cement up through the 9-5/8" csg. Run a 4 1/2" csg. Liner from 200' above bottom of 7" csg. to T.D. and circulate cement back to the top of 4 1/2" csg. Casinghead will be a 10" 900 series w/a 3000 psi. rating.

5- Blowout preventors: Hydraulic, double ram, 10". One set of rams will be provided for each size drill pipe in the hole. One set of blind rams at all times. Fill line will be 2", kill line will be 2", choke relief line will be 2" with variable choke.

6- We will use; spud mud from 0-+200'; Gel Chemical w/low solids as needed from 200' to hole conditions from +200'-+2844'; Compressed gas from +2844' to T.D..

7- Auxiliary Equipment

- a- Kelly cock will be in use at all times.
- b. Stabbing valve to fit drill pipe will be present on floor at all times.
- c. Mud monitoring will be visual, no abnormal pressures are anticipated in this area.
- d. Rotating head will be used when drilling with gas.

8- An AOF test will be taken at the completion of this well. No cores will be taken. Gamma Ray and Compensated Density logs will be run. Any other evaluation that may be necessary during the drilling of this well will be conducted as needed.

9- No abnormal pressures or temperatures are anticipated. See point #5 for blowout prevention equipment.

10- The drilling of this well will take approximately eight days. The gas is contracted to Southern Union Gathering Co.

RECEIVED

FEB 22 1977

U. S. GEOLOGICAL SURVEY  
 FARMINGTON, N. M.

IN ABOVE SPACE DESCRIBE PROPOSED PROGRAM: If proposal is to deepen or plug back, give data on present productive zone and proposed new productive zone. If proposal is to drill or deepen directionally, give pertinent data on subsurface locations and measured and true vertical depths. Give blowout preventer program, if any.

SIGNED A.P. Meyer TITLE Div. Production Manager DATE 2-16-77

(This space for Federal or State office use)

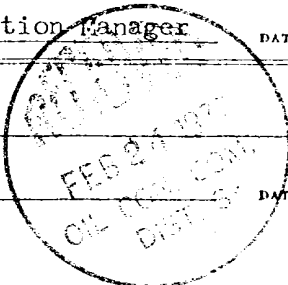
PERMIT NO. \_\_\_\_\_ APPROVAL DATE \_\_\_\_\_

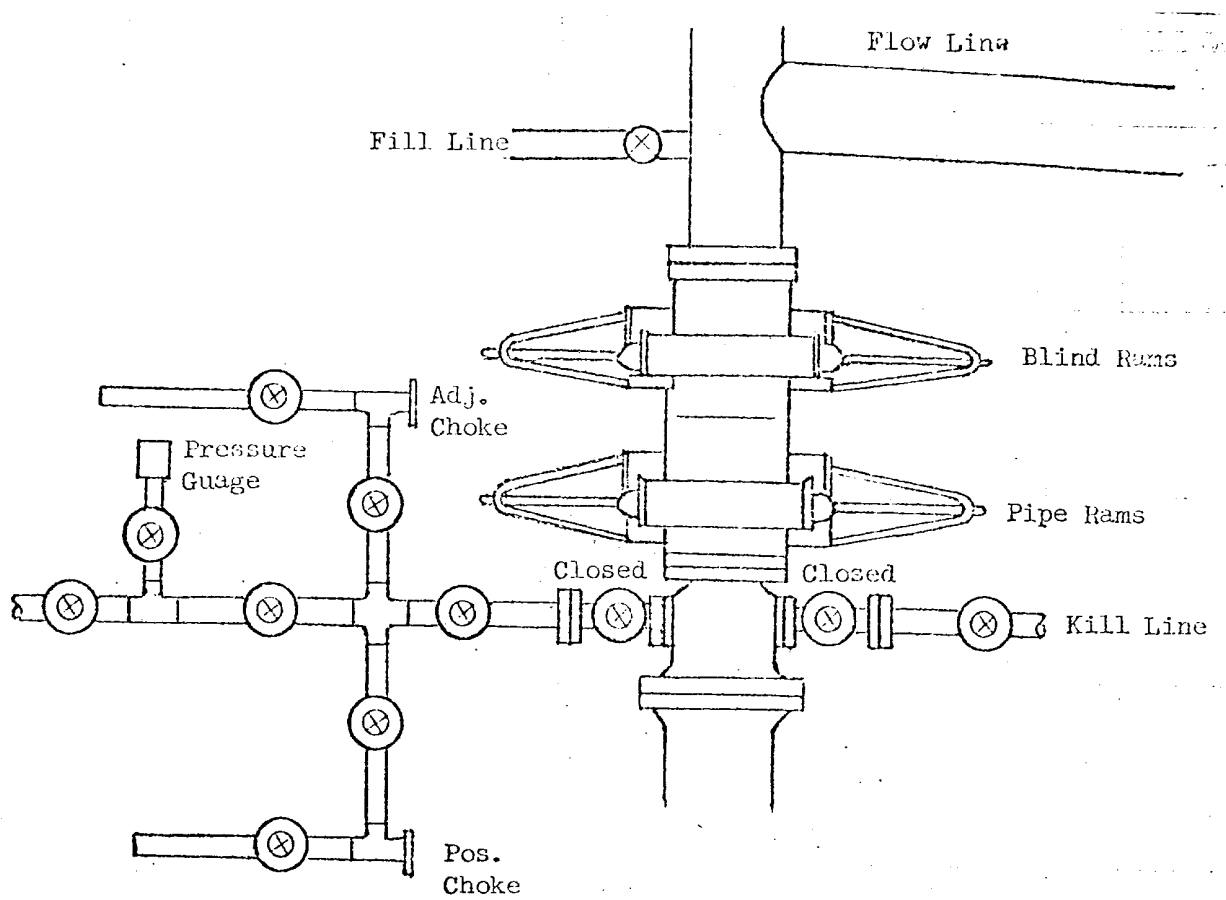
APPROVED BY \_\_\_\_\_ TITLE \_\_\_\_\_ DATE \_\_\_\_\_

CONDITIONS OF APPROVAL, IF ANY:

NWU-9

\*See Instructions On Reverse Side





All valves 2"

All BOPs, flanges, spools, valves, & lines must be series 900 or 3000 psi working press.

Choke manifold must be at ground level and extended out from under substructure.

TENNECO OIL COMPANY

REQUIRED MINIMUM BLOWOUT PREVENTOR

HOOKUP

Denver, Colorado

**NEW MEXICO OIL CONSERVATION COMMISSION  
WELL LOCATION AND ACERAGE DEDICATION PLAT**

All distances must be from the outer boundaries of the Section

Operator <b>TENNECO OIL COMPANY</b>			Lease <b>FLORANCE</b>		Well No. <b>24- A</b>
Unit Letter <b>P</b>	Section <b>23</b>	Township <b>29 NORTH</b>	Range <b>9 WEST</b>	County <b>SAN JUAN</b>	
Actual Footage Location of Well: <b>885</b> feet from the <b>SOUTH</b> line and <b>1190</b> feet from the <b>EAST</b> line					
Ground Level Elev. <b>6031</b>	Producing Formation <b>Blanco Mesa Verde</b>		Pool <b>Blanco Mesa Verde</b>	Dedicated Acreage: <b>296.50</b> Acres <b>E/320</b>	

1. Outline the acreage dedicated to the subject well by colored pencil or hachure marks on the plat below.
2. If more than one lease is dedicated to the well, outline each and identify the ownership thereof (both as to working interest and royalty),
3. If more than one lease of different ownership is dedicated to the well, have the interests of all owners been consolidated by communitization, unitization, force-pooling, etc?

**One Lease**

( ) Yes ( ) No If answer is "yes," type of consolidation .....

If answer is "no," list the owners and tract descriptions which have actually consolidated. (Use reverse side of this form if necessary.) .....

No allowable will be assigned to the well until all interests have been consolidated (by communitization, unitization, forced-pooling, or otherwise) or until a non standard unit, eliminating such interests, has been approved by the Commission.

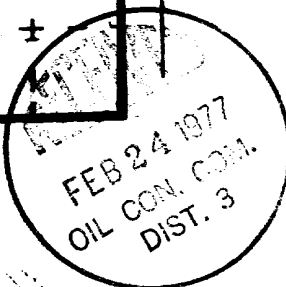
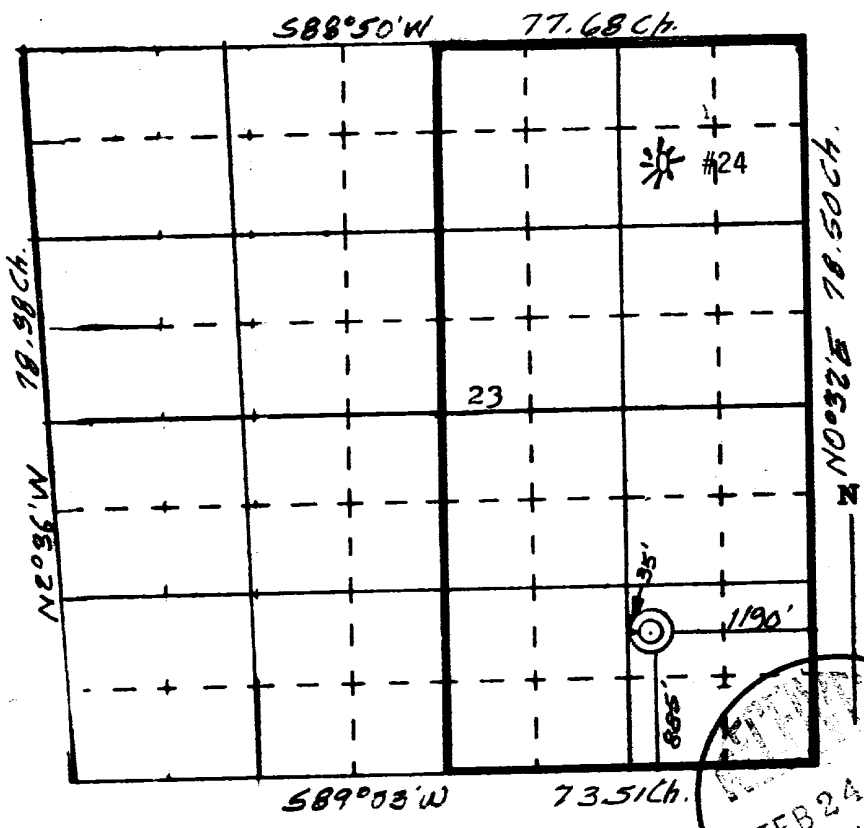
**CERTIFICATION**

I hereby certify that the information contained herein is true and complete to the best of my knowledge and belief.

Name *Paul J. Drueck*  
 Position Production Analyst  
 Company Tenneco Oil Company  
 Date February 24, 1977

I hereby certify that the well location shown on this plat was plotted from field notes of actual surveys made by me or under my supervision, and that the same is true and correct to the best of my knowledge and belief.

Date Surveyed 5 February 1977  
 Registered Professional Engineer and/or Land Surveyor *James P. Leese*  
**James P. Leese**



Certificate No. 1463