

UNITED STATES
DEPARTMENT OF THE INTERIOR
BUREAU OF LAND MANAGEMENT

30-045-26157 UTY UY FARM
SUBMIT IN TRIPLICATE*
(Other instructions on
reverse side)

Form approved.
Budget Bureau No. 1004-0136
Expires August 31, 1985

APPLICATION FOR PERMIT TO DRILL, DEEPEN, OR PLUG BACK

1a. TYPE OF WORK

DRILL ☒

DEEPEN ☐

PLUG BACK ☐

b. TYPE OF WELL

OIL
WELL ☐

GAS
WELL ☒

OTHER

SINGLE
ZONE ☒

MULTIPLE
ZONE ☐

2. NAME OF OPERATOR

Amoco Production Company

3. ADDRESS OF OPERATOR

501 Airport Drive, Farmington, NM 87401

4. LOCATION OF WELL (Report location clearly and in accordance with any State requirements.)*

At surface

1450' FNL X 1430' FWL

At proposed prod. zone

Same

14. DISTANCE IN MILES AND DIRECTION FROM NEAREST TOWN OR POST OFFICE*

14 miles east of Bloomfield, NM

10. DISTANCE FROM PROPOSED*

LOCATION TO NEAREST
PROPERTY OR LEASE LINE, FT.
(Also to nearest drlg. unit line, if any)

1430'

18. DISTANCE FROM PROPOSED LOCATION*
TO NEAREST WELL, DRILLING, COMPLETED,
OR APPLIED FOR, ON THIS LEASE, FT.

300' W

16. NO. OF ACRES IN LEASE

306.99

19. PROPOSED DEPTH

6986'

17. NO. OF ACRES ASSIGNED
TO THIS WELL

320 ~ 306.99

20. ROTARY OR CABLE TOOLS

Rotary

21. ELEVATIONS (Show whether DF, RT, GR, etc.)

5948' GR

DRILLING OPERATIONS AUTHORIZED ARE
SUBJECT TO COMPLIANCE WITH ATTACHED
PROPOSED CASING AND CEMENTING PROGRAM
"GENERAL REQUIREMENTS"

22. APPROX. DATE WORK WILL START*

As soon as permitted
This action is subject to administrative
appeal pursuant to 30 CFR 290.

SIZE OF HOLE	SIZE OF CASING	WEIGHT PER FOOT	SETTING DEPTH	QUANTITY OF CEMENT
12-1/4"	9-5/8"	32.3#, H-40	300'	354 c.f. Class B
8-3/4"	7"	23#, K-55	2816'	601 c.f. Class B
6-1/4"	4-1/2"	11.6#, K-55	6986'	600 c.f. Class B

Amoco proposes to drill the above well to further develop the Basin Dakota reservoir. The well will be drilled to the surface casing point using native mud. The well will then be drilled to TD with a low solids nondispersed mud system. Completion design will be based on open hole logs. Copy of all logs will be filed upon completion. Amoco's standard blowout prevention will be employed; see attached drawing for blowout preventer design. Upon completion the well site will be cleaned and the reserve pit filled and leveled. The gas from this well is dedicated to El Paso Natural Gas under contract No. 56,742.

IN ABOVE SPACE DESCRIBE PROPOSED PROGRAM: If proposal is to deepen or plug back, give data on present productive zone and proposed new productive zone. If proposal is to drill or deepen directionally, give pertinent data on subsurface locations and measured and true vertical depths. Give blowout preventer program, if any.

24.

SIGNED

BDS Shaw

TITLE Administrative Supervisor

APPROVED

(This space for Federal or State office use)

PERMIT NO.

APPROVAL DATE

APPROVED BY

TITLE

CONDITIONS OF APPROVAL, IF ANY:

NW 3-559 dk2

NMOCC

*See Instructions On Reverse Side

NOV 15 1984
DATE
AREA MANAGER
FARMINGTON RESOURCE AREA

All distances must be from the outer boundaries of the Section.

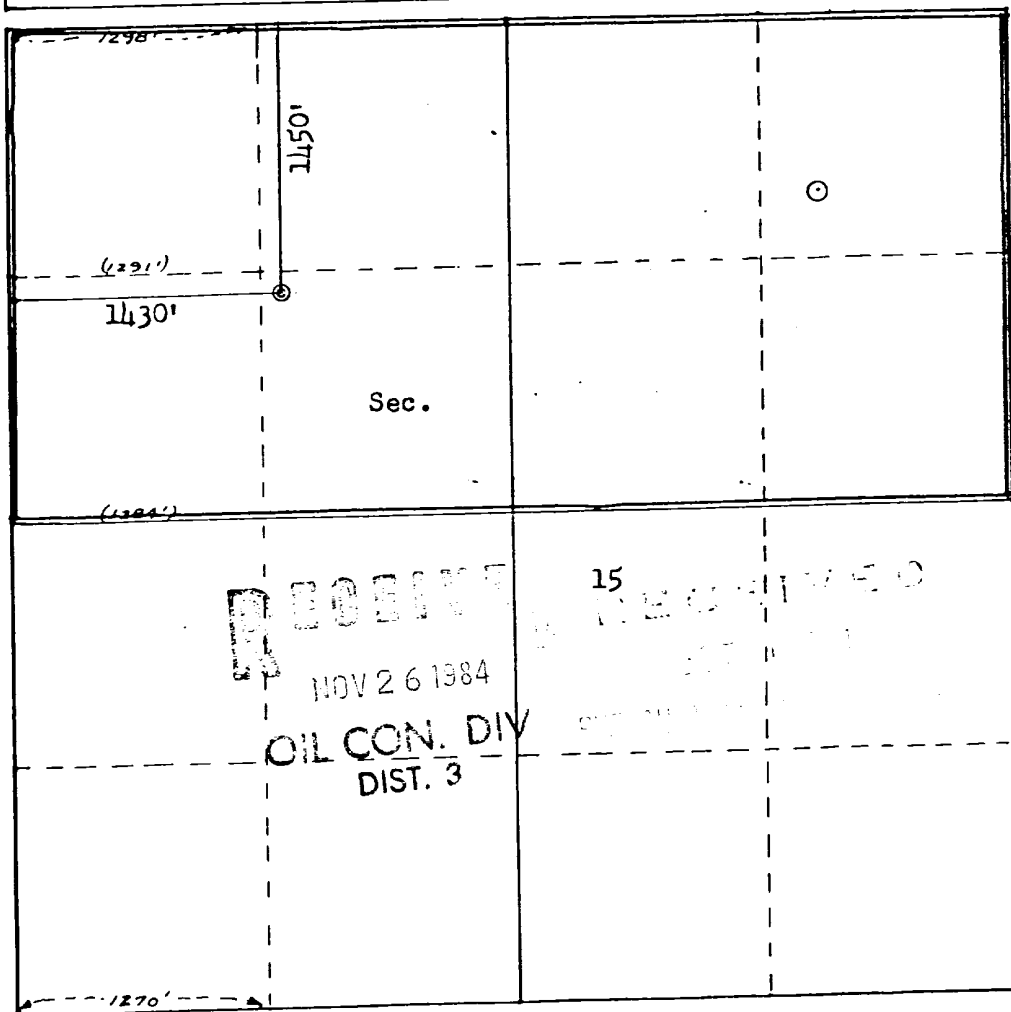
Operator AMOCO PRODUCTION COMPANY			Lease A. L. ELLIOTT "C"		Well No. 1E
Unit Letter F	Section 15	Township 29N	Range 9W	County San Juan	
Actual Footage Location of Well: 1450 feet from the North line and 1430 feet from the West line					
Ground Level Elev. 5948	Producing Formation Dakota		Pool Basin Dakota		Dedicated Acreage: 320 Acres

1. Outline the acreage dedicated to the subject well by colored pencil or hachure marks on the plat below.
2. If more than one lease is dedicated to the well, outline each and identify the ownership thereof (both as to working interest and royalty).
3. If more than one lease of different ownership is dedicated to the well, have the interests of all owners been consolidated by communitization, unitization, force-pooling, etc?

☐ Yes ☒ No If answer is "yes," type of consolidation _____

If answer is "no," list the owners and tract descriptions which have actually been consolidated. (Use reverse side of this form if necessary.) _____

No allowable will be assigned to the well until all interests have been consolidated (by communitization, unitization, forced-pooling, or otherwise) or until a non-standard unit, eliminating such interests, has been approved by the Commission.



Scale: 1"=1000'

CERTIFICATION

I hereby certify that the information contained herein is true and complete to the best of my knowledge and belief.

B.D. Shaw

Name
B.D. Shaw

Position
Administrative Supervisor

Company
Amoco Production Co.

Date
10/4/84

I hereby certify that the well location shown on this plat was plotted from field notes of actual surveys made by me or under my supervision, and that the same is true and correct to the best of my knowledge and belief.

Date Surveyed
September 19, 1984

Registered Professional Engineer and Land Surveyor
Fred B. Kern Jr.
Fred B. Kern Jr.

Certificate No. **3950**

BLOOMFIELD QUADRANGLE

NEW MEXICO-SAN JUAN CO.

UNITED STATES
DEPARTMENT OF THE INTERIOR
GEOLOGICAL SURVEY

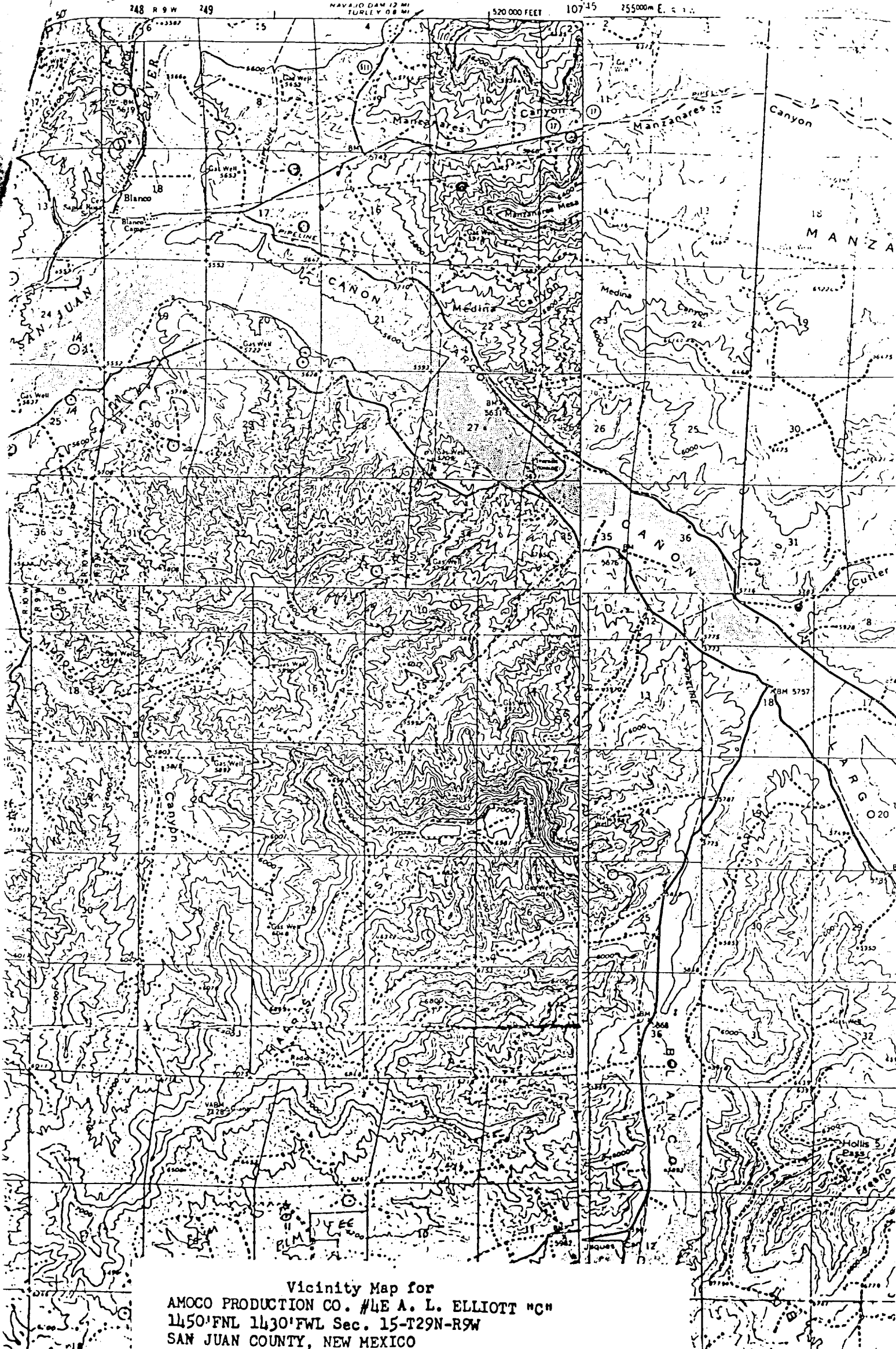
15 MINUTE-SERIES (TOPOGRAPHIC)

NAVAJO DAM 12 MI
TURLEY 08 MI

520 000 FEET

107-45

255 000m E. & 1.1



Vicinity Map for
 AMOCO PRODUCTION CO. #4E A. L. ELLIOTT "C"
 1450' FNL 1430' FWL Sec. 15-T29N-R9W
 SAN JUAN COUNTY, NEW MEXICO