

UNITED STATES
DEPARTMENT OF THE INTERIOR
BUREAU OF LAND MANAGEMENT

APPLICATION FOR PERMIT TO DRILL, DEEPEN, OR PLUG BACK

1a. TYPE OF WORK

DRILL ☒

DEEPEN ☐

PLUG BACK ☐

b. TYPE OF WELL

OIL
WELL ☐

GAS
WELL ☒

OTHER

SINGLE
ZONE ☒

MULTIPLE
ZONE ☐

2. NAME OF OPERATOR

Amoco Production Co.

3. ADDRESS OF OPERATOR

501 Airport Drive, Farmington, N M 87401

4. LOCATION OF WELL (Report location clearly and in accordance with any State requirements.)

At surface

2105' FSL x 875' FEL

At proposed prod. zone

same

14. DISTANCE IN MILES AND DIRECTION FROM NEAREST TOWN OR POST OFFICE

13 miles east of Blanco, NM

15. DISTANCE FROM PROPOSED*

LOCATION TO NEAREST
PROPERTY OR LEASE LINE, FT.

(Also to nearest drlg. unit line, if any)

875'

16. NO. OF ACRES IN LEASE

265.66

17. NO. OF ACRES ASSIGNED

TO THIS WELL

320 5 30367

18. DISTANCE FROM PROPOSED LOCATION*

TO NEAREST WELL, DRILLING, COMPLETED,
OR APPLIED FOR, ON THIS LEASE, FT.

1000' NE

19. PROPOSED DEPTH

7113'

20. ROTARY OR CABLE TOOLS

Rotary

21. ELEVATIONS (Show whether DF, RT, GR, etc.)

6483' GR

DRILLING OPERATIONS AUTHORIZED ARE
SUBJECT TO COMPLIANCE WITH ATTACHED
"GENERAL REQUIREMENTS"

22. APPROX. DATE WORK WILL START*

as soon as permitted

23.

PROPOSED CASING AND CEMENTING PROGRAM

This action is subject to administrative

appeal pursuant to 30 CFR 290.

SIZE OF HOLE	SIZE OF CASING	WEIGHT PER FOOT	SETTING DEPTH	QUANTITY OF CEMENT
12-1/4"	9-5/8"	32.3# H-40	300'	354 cu ft Class B
8-3/4"	7"	20#, K-55	2965'	750 cu ft Class B
6-1/4"	4-1/2"	10.5#, K-55	7113'	1100 cu ft Class B

Amoco proposes to drill the above well to further develop the Basin Dakota reservoir. The well will be drilled to the surface casing point using native mud. The well will then be drilled to TD with a low solids nondispersed mud system. completion design will be based on open hole logs. Copy of all logs will be filed upon completion. Amoco's standard blowout prevention will be employed; see attached drawing for blowout preventer design. Upon completion the well site will be cleaned and the reserve pit filled and leveled. The gas from this well is dedicated to El Paso Natural Gas under contract No. 56742.

IN ABOVE SPACE DESCRIBE PROPOSED PROGRAM: If proposal is to deepen or plug back, give data on present productive zone and proposed new productive zone. If proposal is to drill or deepen directionally, give pertinent data on subsurface locations and measured and true vertical depths. Give blowout preventer program, if any.

24.

Original Signed By

SIGNED

B. D. Shaw

TITLE Admin. Supervisor

DATE 2-26-85

(This space for Federal or State office use)

PERMIT NO.

APPROVAL DATE

APPROVED BY

CONDITIONS OF APPROVAL, IF ANY:

OIL COAL DIV.
DIST

NMOCC

*See Instructions On Reverse Side

APPROVED
AS AMENDED

MAY 14 1985

/s/ J. Stan McKee

M. MILLENBACH
AREA MANAGER

OIL CONSERVATION DIVISION

STATE OF NEW MEXICO
ENERGY AND MINERALS DEPARTMENTP. O. BOX 2088
SANTA FE, NEW MEXICO 87501Form C-102
Revised 10-1-79

All distances must be from the outer boundaries of the Section.

Operator AMOCO PRODUCTION COMPANY		Lease TRIGG FED GAS COM B		Well No. 1
Unit Letter I	Section 15	Township 29 N	Range 9 W	County San Juan
Actual Footage Location of Well: 2105 feet from the SOUTH line and 875 feet from the EAST line				
Ground Level Elev. 6483	Producing Formation Dakota	Pool Basin Dakota	Dedicated Acreage 320 Acres	

1. Outline the acreage dedicated to the subject well by colored pencil or hatchure marks on the plat below.
2. If more than one lease is dedicated to the well, outline each and identify the ownership thereof (both as to working interest and royalty).
3. If more than one lease of different ownership is dedicated to the well, have the interests of all owners been consolidated by communitization, unitization, force-pooling, etc?

☒ Yes ☐ No If answer is "yes," type of consolidation Communitized

If answer is "no," list the owners and tract descriptions which have actually been consolidated. (Use reverse side of this form if necessary.)

No allowable will be assigned to the well until all interests have been consolidated (by communitization, unitization, forced-pooling, or otherwise) or until a non-standard unit, eliminating such interests, has been approved by the Division.

RECEIVED MAR 04 1985 BUREAU OF LAND MANAGEMENT WILMINGTON RESOURCE AREA	
15	
RECEIVED MAY 16 1985 OIL CON. DIV. DIST. 3	
875'	
2105'	

CERTIFICATION

I hereby certify that the information contained herein is true and complete to the best of my knowledge and belief.

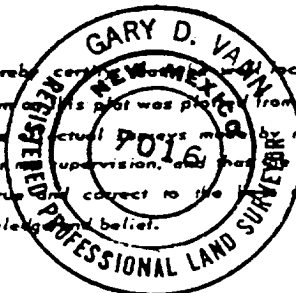
Original Signed By

Name B. D. ShawPosition B. D. Shaw

Adm. Supervisor

Company Amoco Production CompanyDate 2-26-85

I hereby certify that the location shown on this plat was plotted from field notes and actual surveys made by me or under my supervision, and that the same is true and correct to the best of my knowledge and belief.

Date Surveyed
December 26, 1984Registered Professional Engineer
and/or Land SurveyorG. D. Vann
Gary D. Vann

Certificate No.

7016

0 330 660 990 1320 1650 1980 2310 2640 2970 3300 0

