

UNITED STATES
DEPARTMENT OF THE INTERIOR
BUREAU OF LAND MANAGEMENT

APPLICATION FOR PERMIT TO DRILL, DEEPEN, OR PLUG BACK

1a. TYPE OF WORK
DRILL ☒ DEEPEN ☐ PLUG BACK ☐

b. TYPE OF WELL
OIL WELL ☐ GAS WELL ☒ OTHER ☐

2. NAME OF OPERATOR
Meridian Oil Inc.

3. ADDRESS OF OPERATOR
PO Box 4289, Farmington, NM 87499

4. LOCATION OF WELL (Report location clearly and in accordance with any State requirements.)
At surface 1330'S, 1270'W
At proposed prod. zone

14. DISTANCE IN MILES AND DIRECTION FROM NEAREST TOWN OR POST OFFICE*
5 miles from Blanco, NM

15. DISTANCE FROM PROPOSED*
LOCATION TO NEAREST
PROPERTY OR LEASE LINE, FT.
(Also to nearest drig. unit line, if any)
1270'

16. NO. OF ACRES IN LEASE
951.80

17. NO. OF ACRES ASSIGNED
TO THIS WELL
311.80

18. DISTANCE FROM PROPOSED LOCATION*
TO NEAREST WELL, DRILLING, COMPLETED,
OR APPLIED FOR, ON THIS LEASE, FT.
500'

19. PROPOSED DEPTH
2103'

20. ROTARY OR CABLE TOOLS
Rotary

21. ELEVATIONS (Show whether DF, RT, GR, etc.)
5665' GL

DRILLING OPERATIONS AUTHORIZED ARE
SUBJECT TO COMPLIANCE WITH ATTACHED
"GENERAL REQUIREMENTS".
PROPOSED CASING AND CEMENTING PROGRAM

22. APPROX. DATE WORK WILL START*

SIZE OF HOLE	SIZE OF CASING	WEIGHT PER FOOT	SETTING DEPTH	
12 1/4"	9 5/8"	32.3#	200'	125 cf. circulated
8 3/4"	7"	20.0#	1974'	293 cf circ. surface
6 1/4"	5 1/2" liner	15.5#	2103'	do not cement

The Fruitland coal formation will be completed.

A 3000 psi WP and 6000 psi test double gate preventer equipped with blind and pipe rams will be used for blow out prevention on this well.

This gas is dedicated.

The W/2 of Section 22 is dedicated to this well.

RECEIVED
JAN 23 1989

OIL CON. DIV.
DIST.

IN ABOVE SPACE DESCRIBE PROPOSED PROGRAM: If proposal is to deepen or plug back, give data on present productive zone and proposed new productive zone. If proposal is to drill or deepen directionally, give pertinent data on subsurface locations and measured and true vertical depths. Give blowout preventer program, if any.

24. SIGNED [Signature] TITLE Regulatory Affairs DATE 01-17-89

(This space for Federal or State office use)

PERMIT NO. _____ APPROVAL DATE _____

APPROVED
AS AMENDED

APPROVED BY [Signature] DATE 01-17-89
CONDITIONS OF APPROVAL, IF ANY:

TITLE _____

NOT WARRANTED BY BUREAU OF LAND MANAGEMENT

NMDOC

hold no legal rights

*See Instructions On Reverse Side

Title 18 U.S.C. Section 1001, makes it a crime for any person knowingly and willfully to make to any department or agency of the United States any false, fictitious or fraudulent statements or representations as to any matter within its jurisdiction.

All distances must be from the outer boundaries of the Section.

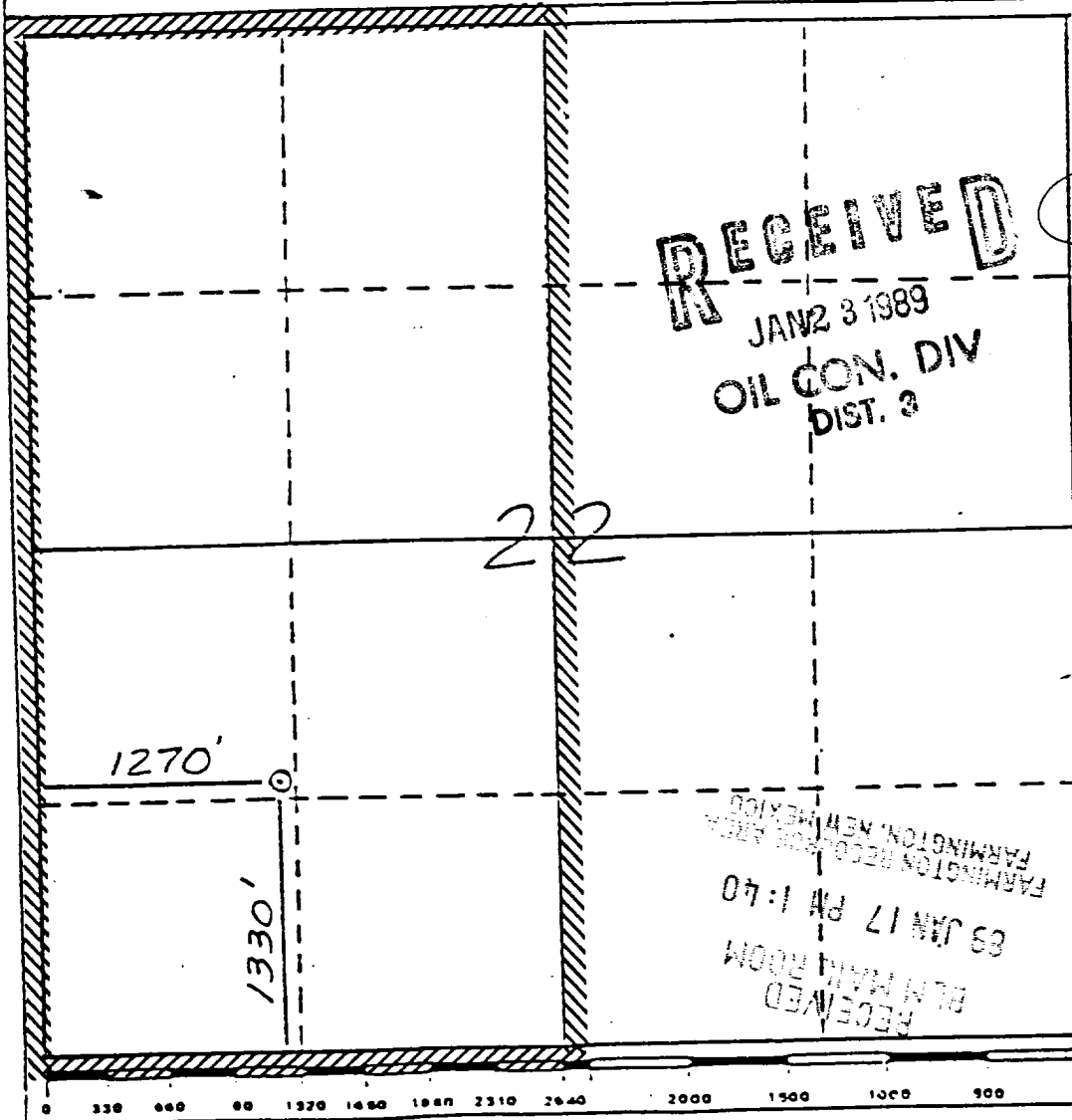
Operator Meridian Oil Inc.		Lease Grambling (NM-03999)		Well No. 720
Unit Letter L	Section 22	Township 29 North	Range 9 West	County San Juan
Actual Footage Location of Well 1330 feet from the South line and 1270 feet from the West line				
Ground Level Elev. 5665	Producing Formation Fruitland Coal	Pool Basin	Dedicated Acreage: 32.31180	

1. Outline the acreage dedicated to the subject well by colored pencil or hatchure marks on the plat below.
2. If more than one lease is dedicated to the well, outline each and identify the ownership thereof (both as to work interest and royalty).
3. If more than one lease of different ownership is dedicated to the well, have the interests of all owners been consolidated by communitization, unitization, force-pooling, etc?

☐ Yes ☐ No If answer is "yes," type of consolidation _____

If answer is "no," list the owners and tract descriptions which have actually been consolidated. (Use reverse side this form if necessary.) _____

No allowable will be assigned to the well until all interests have been consolidated (by communitization, unitization, force-pooling, or otherwise) or until a non-standard unit, eliminating such interests, has been approved by the Division.



CERTIFICATION

I hereby certify that the information contained herein is true and complete to the best of my knowledge and belief.

[Signature]
Name

Regulatory Affairs

Position
Meridian Oil Inc.

Company
1-17-89

Date

I hereby certify that the well location shown on this plat was plotted from notes of actual survey made by me under my supervision, and that the same is true and correct to the best of my knowledge and belief.

Date Surveyed

11-18-88

Registered Professional Engineer and/or Land Surveyor

Neale C. Edwards

Certificate No.

6857

BLANCO QUADRANGLE
NEW MEXICO-SAN JUAN CC
7.5 MINUTE SERIES (TOPOGRAPHIC)

