

UNITED STATES  
DEPARTMENT OF THE INTERIOR  
BUREAU OF LAND MANAGEMENT

APPLICATION FOR PERMIT TO DRILL, DEEPEN, OR PLUG BACK

1a. TYPE OF WORK

DRILL ☒

DEEPEN ☐

PLUG BACK ☐

b. TYPE OF WELL

OIL  
WELL ☐

GAR  
WELL ☒

OTHER

SINGLE  
ZONE ☒

MULTIPLE  
ZONE ☐

2. NAME OF OPERATOR

Robert L. Bayless

3. ADDRESS OF OPERATOR

P.O. Box 168, Farmington, NM 87499

4. LOCATION OF WELL (Report location clearly and in accordance with any State requirements.)\*  
At surface

1815' FNL & 835' FEL  
At proposed prod. zone

14. DISTANCE IN MILES AND DIRECTION FROM NEAREST TOWN OR POST OFFICE\*

10. DISTANCE FROM PROPOSED\*

LOCATION TO NEAREST  
PROPERTY OR LEASE LINE, FT.  
(Also to nearest drg. unit line, if any)

16. NO. OF ACRES IN LEASE

2449.35

17. NO. OF ACRES ASSIGNED  
TO THIS WELL

N/320

18. DISTANCE FROM PROPOSED LOCATION\*  
TO NEAREST WELL, DRILLING, COMPLETED,  
OR APPLIED FOR, ON THIS LEASE, FT.

19. PROPOSED DEPTH

2285'

20. ROTARY OR CABLE TOOLS

0 - TD

21. ELEVATIONS (Show whether DF, RT, GR, etc.) This action is subject to technical and  
procedural review pursuant to 43 CFR 3165.3  
and appeal pursuant to 43 CFR 3165.4.

-1815' GL 57635' RKB

22. APPROX. DATE WORK WILL START\*

ASAP

23. PROPOSED CASING AND CEMENTING PROGRAM

DRILLING OPERATIONS AUTHORIZED ARE  
SUBJECT TO COMPLIANCE WITH ATTACHED  
"GENERAL REQUIREMENTS"  
90 sx Class B (106 ft<sup>3</sup>)

SIZE OF HOLE	SIZE OF CASING	WEIGHT PER FOOT	SETTING DEPTH
12-1/4"	8-5/8"	24.0#	120'
7-7/8"	4-1/2"	10.5#	2285'

500 sx assorted cements-see long-  
string cementing guidelines for  
details

Will drill 12-1/4" hole to 120' and set 120' of 8-5/8" 24.0 #/ft J-55 used casing, cementing with 106 ft<sup>3</sup> Class B cement, circulated to surface. Will drill 7-7/8" hole to 2285' and run 2285' of 4-1/2" 10.5 #/ft J-55 new casing and cement as per attached longstring cementing guidelines. Circulating medium while drilling will be clear water, natural mud and waterloss control additives. No abnormal pressures or temperatures are anticipated. Will run Induction and Density Logs. Blowout preventer and safety equipment schematics are attached. The gas from this formation is not dedicated to a gas contract.

ESTIMATED TIPS: Ojo Alamo - 1040  
Kirtland - 1160  
Fruitland - 1930  
Pictured Cliffs - 2205  
Total Depth - 2285'

RECEIVED  
JUL 9 1990

OIL CON. DIV.  
DIST. 3

IN ABOVE STATE DESIGNATION PROGRAM: If proposal is to deepen or plug back, give data on present production and proposed new productive zone. If proposal is to drill or deepen directionally, give pertinent data on subsurface locations and measured and true vertical depths. Give blowout preventer program, if any.

24.

SIGNED

Kevin H. McCord

TITLE Petroleum Engineer

DATE 6-1-90

(This space for Federal or State office use)

PERMIT NO.

APPROVAL DATE

APPROVED BY

TITLE

CONDITIONS OF APPROVAL, IF ANY:

NMOOD

JUL 10 1990  
AREA MANAGER

\*See Instructions On Reverse Side

Title 18 U.S.C. Section 1001, makes it a crime for any person knowingly and willfully to make to any department or agency of the United States any false, fictitious or fraudulent statements or representations as to any matter within its jurisdiction.

Submit to Appropriate  
District Office  
State Lease - 4 copies  
Fee Lease - 3 copies

State of New Mexico  
Energy, Minerals and Natural Resources Department

Form C-102  
Revised 1-1-89

OIL CONSERVATION DIVISION

P.O. Box 2088  
Santa Fe, New Mexico 87504-2088

DISTRICT I  
P.O. Box 1980, Hobbs, NM 88240

DISTRICT II  
P.O. Drawer DD, Artesia, NM 88210

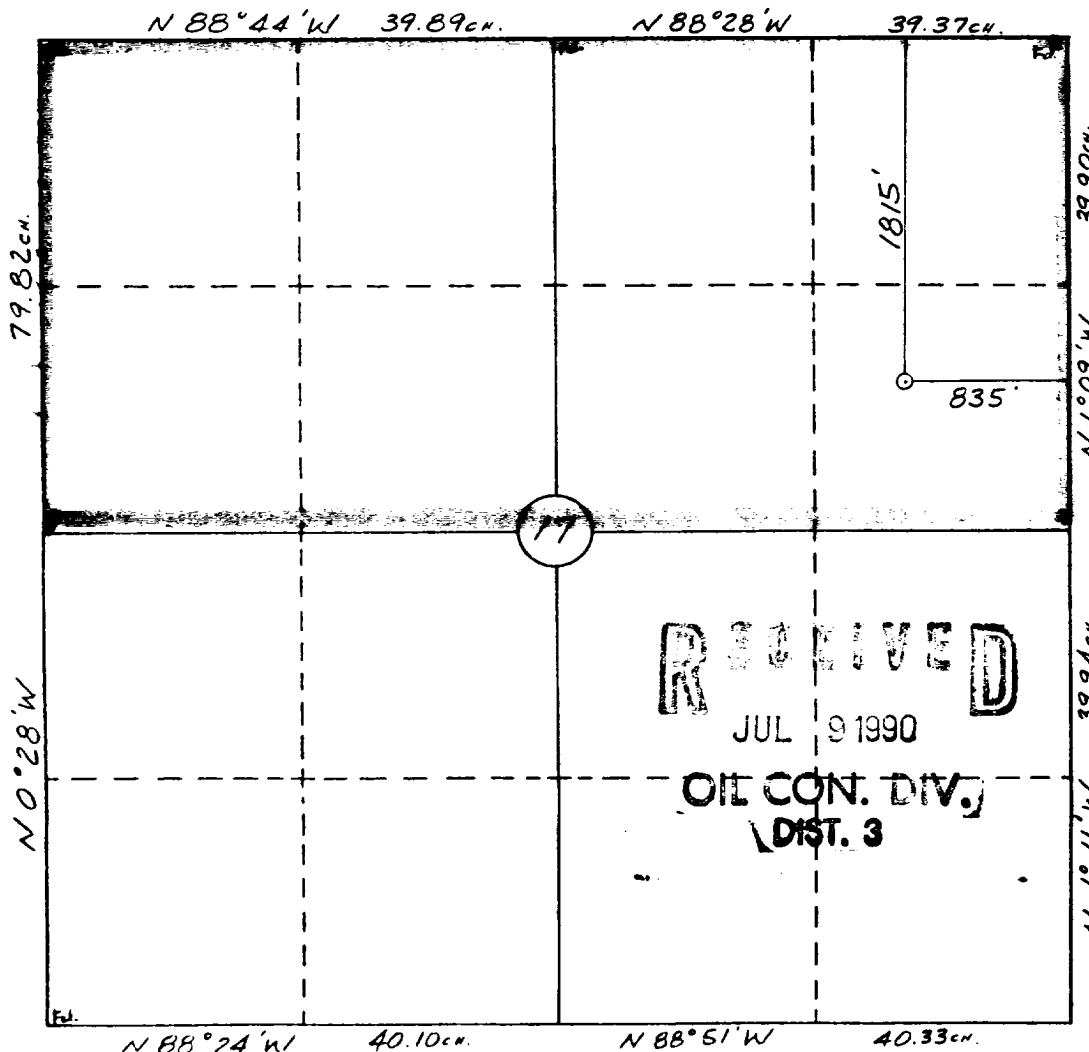
DISTRICT III  
1000 Rio Brazos Rd., Aztec, NM 87410

WELL LOCATION AND ACREAGE DEDICATION PLAT

All Distances must be from the outer boundaries of the section

Operator <b>Robert F. Bayless</b> BAYLESS MINERALS, INC.		Lease SANTA ROSA 17		Well No. 17-1
Unit Letter H	Section 17	Township 29 N	Range 9 W	County San Juan
Actual Footage Location of Well: 1815 feet from the North line and 835 feet from the East line				
Ground level Elev. 5715	Producing Formation Fruitland Coal	Pool Basin Fruitland Coal	Dedicated Acreage: 320 Acres	
<p>1. Outline the acreage dedicated to the subject well by colored pencil or hatchure marks on the plat below.</p> <p>2. If more than one lease is dedicated to the well, outline each and identify the ownership thereof (both as to working interest and royalty).</p> <p>3. If more than one lease of different ownership is dedicated to the well, have the interest of all owners been consolidated by communitization, unitization, force-pooling, etc.? <input type="checkbox"/> Yes <input type="checkbox"/> No If answer is "yes" type of consolidation _____</p> <p>If answer is "no" list the owners and tract descriptions which have actually been consolidated. (Use reverse side of this form if necessary.) _____</p> <p>No allowable will be assigned to the well until all interests have been consolidated (by communitization, unitization, forced-pooling, or otherwise) or until a non-standard unit, eliminating such interest, has been approved by the Division.</p>				

0 330 660 990 1320 1650 1980 2310 2640 2000 1500 1000 500 0



OPERATOR CERTIFICATION

I hereby certify that the information contained herein is true and complete to the best of my knowledge and belief.

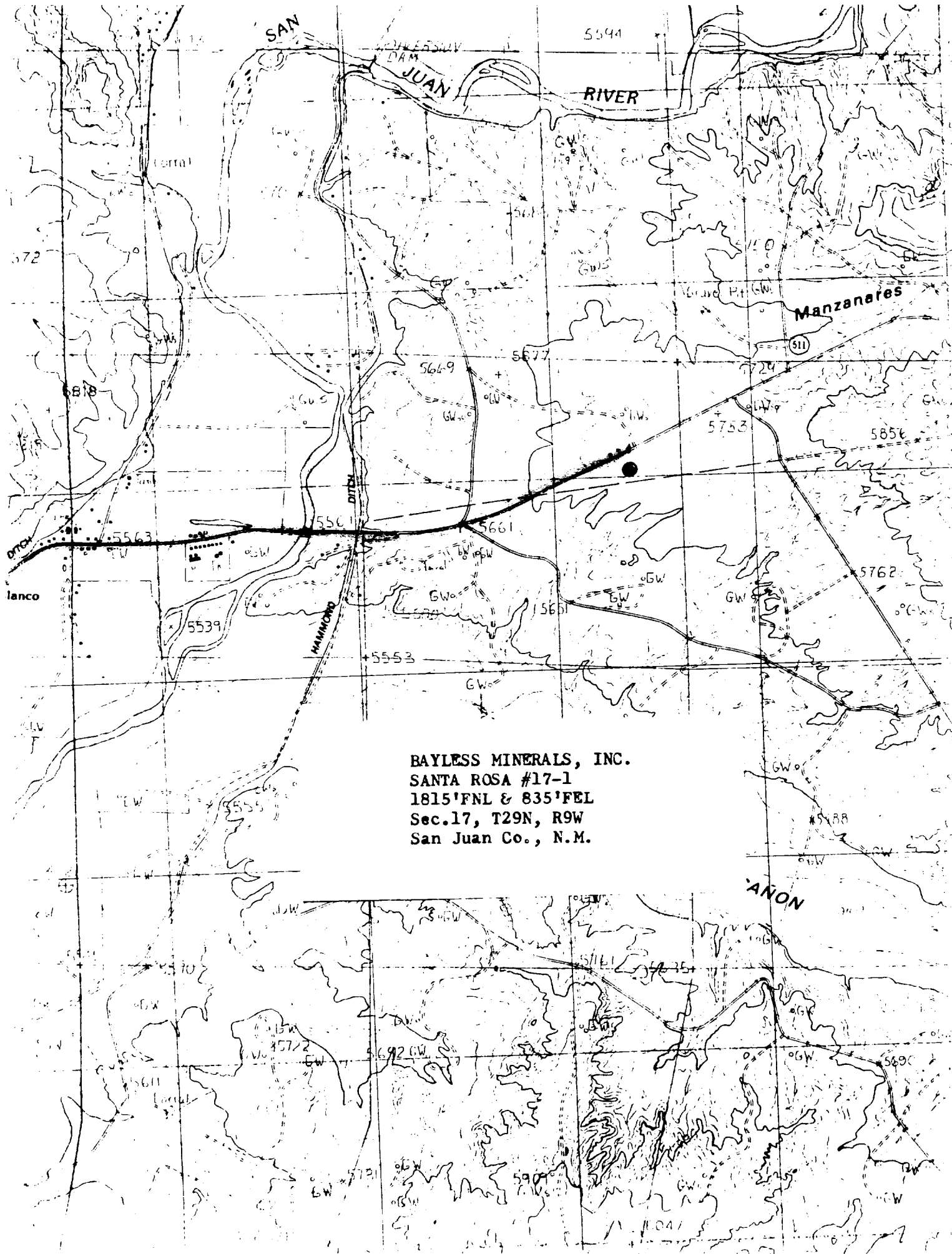
Signature  
**Kevin H. McCord**  
Printed Name  
Kevin H. McCord  
Position  
Petroleum Engineer  
Company  
Bayless Minerals, Inc.  
Date  
6-1-90

SURVEYOR CERTIFICATION

I hereby certify that the well location shown on this plat was plotted from field notes of actual surveys made by me or under my supervision, and that the same is true and correct to the best of my knowledge and belief.

5-17-90

Date Surveyed  
**William E. Mabinke II**  
Signature of Surveyor  
**WILLIAM E. MABINKE II**  
Professional Surveyor  
New Mexico  
#8466  
Certificate No. 8466



BAYLESS MINERALS, INC.  
SANTA ROSA #17-1  
1815'FNL & 835'FEL  
Sec.17, T29N, R9W  
San Juan Co., N.M.