

NEW MEXICO OIL CONSERVATION COMMISSION  
Santa Fe, New Mexico

NOTICE OF INTENTION TO DRILL OR RECOMPLETE

Notice must be given to the District Office of the Oil Conservation Commission and approval obtained before drilling or recompletion begins. If changes in the proposed plan are considered advisable, a copy of this notice showing such changes will be returned to the sender. Submit this notice in QUINTUPPLICATE. One copy will be returned following approval. See additional instructions in Rules and Regulations of the Commission.

**Farmington, New Mexico**

(Place)

**October 4, 1954**

(Date)

OIL CONSERVATION COMMISSION  
SANTA FE, NEW MEXICO

Gentlemen:

You are hereby notified that it is our intention to commence the (Drilling) (Recompletion) of a well to be known as

**El Paso Natural Gas Company**

(Company or Operator)

**Pubco State**

(Lease)

, Well No. **1**, in **L** The well is

(Unit)

located **1650** feet from the **South** line and **990** feet from the

**West** line of Section **36**, T. **30N**, R. **7W**, NMPM.

(GIVE LOCATION FROM SECTION LINE) **Blanco** Pool, **Rio Arriba** County

If State Land the Oil and Gas Lease is No. **E-5111-5**

If patented land the owner is.....

Address.....

We propose to drill well with drilling equipment as follows: **Rotary tools through the Mesa Verde drilling the pay with gas circulation.**

The status of plugging bond is **Statewide**

Drilling Contractor **Company tools**

We intend to complete this well in the **Mesa Verde** formation at an approximate depth of **6145** feet

CASING PROGRAM

We propose to use the following strings of Casing and to cement them as indicated:

Size of Hole	Size of Casing	Weight per Foot	New or Second Hand	Depth	Sacks Cement
<b>12 3/4</b>	<b>9 5/8</b>	<b>25.4</b>	<b>New</b>	<b>160</b>	<b>125</b>
<b>8 3/4</b>	<b>7</b>	<b>20</b>	<b>New</b>	<b>5500</b>	<b>500</b>

If changes in the above plans become advisable we will notify you immediately.

ADDITIONAL INFORMATION (If recompletion give full details of proposed plan of work.) **And to sand-oil fracture the entire Mesa Verde formation.**

**The W/2 of Section 36 is dedicated to this well.**

**N/2 NW/4 Carr E-5167-2**

**SW/4 NW/4**

**W/2 SW/4 Pubco E-5111-5**

**E/2 SW/4 Beaverledge B-10603-24**

**SE/4 NW/4**

Approved....., 19 **54**  
Except as follows:

Sincerely yours,

**El Paso Natural Gas Company**

(Company or Operator)

By.....

Position **Petroleum Engineer**

Send Communications regarding well to

Name **E. J. Coal**

Address **Box 997, Farmington, N.M.**

OIL CONSERVATION COMMISSION

By.....

**Oil and Gas Inspector Dist. #3.**

COMPANY EL PASO NATURAL GAS COMPANY

Well Name & No. PUBCO-STATE NO. 1

Lease No. E-5111-5

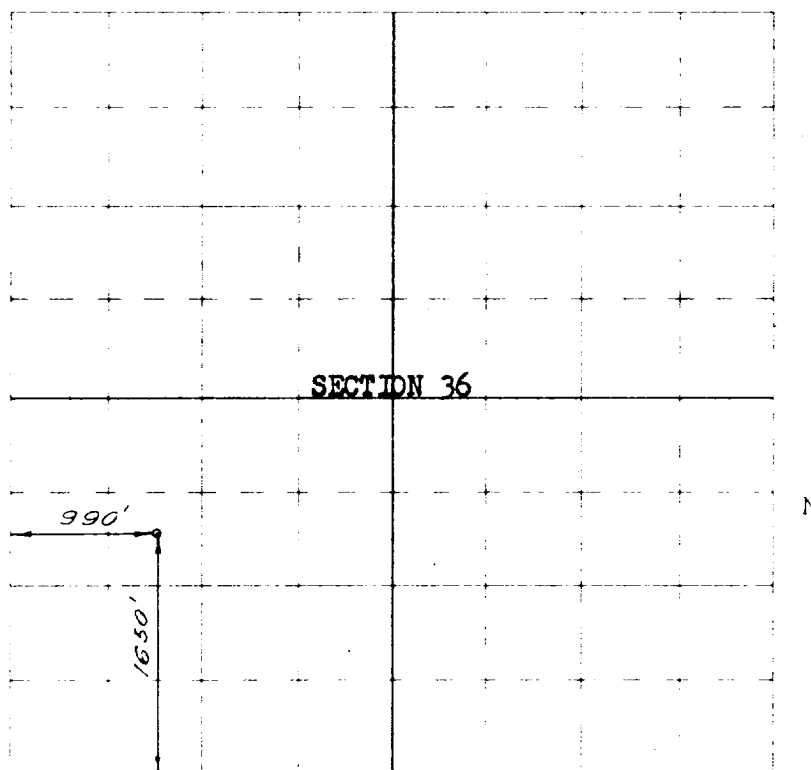
Location 1650 FEET FROM THE SOUTH LINE, 990 FEET FROM THE WEST LINE

being in THE NW/4 OF THE SW/4

Sec. 36, T 30 N, R 7 E, N.M.I.M.

RIO ARRIBA COUNTY, NEW MEXICO

Ground Elevation 6896<sup>18</sup>



Scale -- 4 inches equals 1 mile

Surveyed MARCH 17, 1954

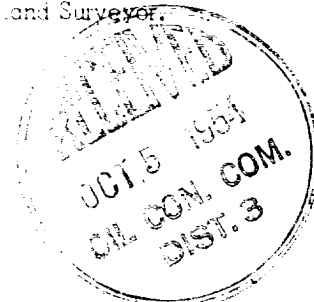
This is to certify that the above plat was prepared from field notes of actual surveys made by me or under my supervision and that the same are true and correct to the best of my knowledge and belief.

Seal:

*C. O. Walker*

Registered Professional  
Engineer and Land Surveyor

Farmington, New Mexico



OIL CONSERVATION COMMISSION		
AZTEC DISTRICT OFFICE		
No. Copies Received <u>7</u>		
DISTRIBUTION		
	NO. FURNISHED	
Operator	<u>2</u>	
Santa Fe	<u>1</u>	
Proration Office	<u>1</u>	
State Land Office	<u>1</u>	
U. S. G. S.	<u>1</u>	
Transporter		
File	<u>1</u>	<input checked="" type="checkbox"/>