

NEW MEXICO OIL CONSERVATION COMMISSION
Santa Fe, New Mexico

NOTICE OF INTENTION TO DRILL OR RECOMPLETE

Notice must be given to the District Office of the Oil Conservation Commission and approval obtained before drilling or recompletion begins. If changes in the proposed plan are considered advisable, a copy of this notice showing such changes will be returned to the sender. Submit this notice in QUINTUPPLICATE. One copy will be returned following approval. See additional instructions in Rules and Regulations of the Commission.

Farmington, New Mexico

September 7, 1954

(Place)

(Date)

OIL CONSERVATION COMMISSION
SANTA FE, NEW MEXICO

Gentlemen:

You are hereby notified that it is our intention to commence the (Drilling) (Recompletion) of a well to be known as

El Paso Natural Gas Company

(Company or Operator)

Phillips State

(Lease)

, Well No. **1**, in **L** (Unit) The well is

located **1647** feet from the **South** line and **900** feet from the

West line of Section **16**, T. **30N**, R. **6W**, NMPM.

(GIVE LOCATION FROM SECTION LINE) **Blanco** Pool, **Rio Arriba** County

If State Land the Oil and Gas Lease is No. **E-347-17**

If patented land the owner is.....

Address.....

We propose to drill well with drilling equipment as follows: **Rotary tools, drilling the pay with gas circulation.**

The status of plugging bond is **Statewide**

Drilling Contractor **Company tools**

We intend to complete this well in the **Mesa Verde**

formation at an approximate depth of **5890** feet.

CASING PROGRAM

We propose to use the following strings of Casing and to cement them as indicated:

Size of Hole	Size of Casing	Weight per Foot	New or Second Hand	Depth	Sacks Cement
13 3/4	9 5/8	25.4	New	160	125
8 3/4	7	20	New	5335	500

If changes in the above plans become advisable we will notify you immediately.

ADDITIONAL INFORMATION (If recompletion give full details of proposed plan of work.) **It is intended to sand-oil fracture the entire Mesa Verde formation.**

The W/2 of Section 16 is dedicated to this well.

NW/4 E-347-10

SW/4 E-347-17

Approved.....
Except as follows:.....

Sincerely yours,

El Paso Natural Gas Company

(Company or Operator)

By.....

Position..... **Petroleum Engineer**
Send Communications regarding well to

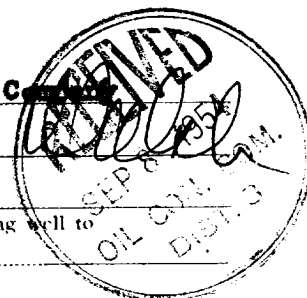
Name..... **E. J. Coel**

Address..... **Box 997**
Farmington, New Mexico

OIL CONSERVATION COMMISSION

By.....

Title..... **Oil and Gas Inspector Dist. #3.**



OIL CONSERVATION COMMISSION		
AZTEC DISTRICT OFFICE		
No. Copies Received		
DISTRIBUTION		
	NO. FURNISHED	
Operator		
Santa Fe		
Proration Office		
State Land Office		
U. S. G. S.		
Transporter		
File		

100-111111-111111

COMPANY EL PASO NATURAL GAS COMPANY

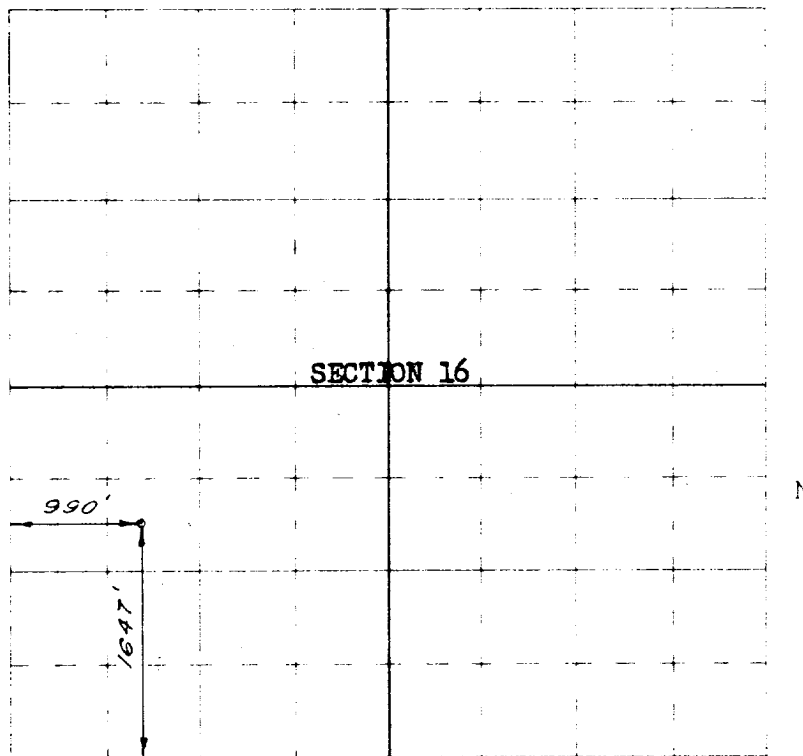
Well Name & No. PHILLIPS-STATE NO. 1 Lease No. E-347-17

Location 1647 FEET FROM THE SOUTH LINE, 900 FEET FROM THE WEST LINE

Being in THE NW/4 OF THE SW/4

Sec. 16, T 30N., R 6 W., N.M.P.M., RIO ARRIBA COUNTY, NEW MEXICO

Ground Elevation 6567.82



Scale -- 4 inches equals 1 mile

Surveyed MARCH 31, 1954

This is to certify that the above plat was prepared from field notes of actual surveys made by me or under my supervision and that the same are true and correct to the best of my knowledge and belief.

Seal

C. C. Walker
Registered Professional
Engineer and Land Surveyor.

Farmington, New Mexico



OIL CONSERVATION COMMISSION		
AZTEC DISTRICT OFFICE		
No. Copies Received 47		
DISTRIBUTION		
	NO. FURNISHED	
Operator	2	
Santa Fe	1	
Proration Office		
State Land Office	1	
U. S. G. S.	2	
Transporter		
File	1	<input checked="" type="checkbox"/>