

UNITED STATES  
DEPARTMENT OF THE INTERIOR  
GEOLOGICAL SURVEY RECEIVED

## APPLICATION FOR PERMIT TO DRILL, DEEPEN, OR PLUG BACK

## 1a. TYPE OF WORK

DRILL ☒DEEPEN ☐ 19 PM 3:30 PLUG BACK ☐

## b. TYPE OF WELL

OIL  
WELL ☐GAS  
WELL ☒OTHER ☐FARMINGTON REGIONAL AREA  
FARMINGTON, NEW MEXICOMULTIPLE  
ZONE ☐

## 2. NAME OF OPERATOR

Blackwood &amp; Nichols Co., Ltd.

## 3. ADDRESS OF OPERATOR

P.O. Box 1237, Durango, Colorado 81302-1237

## 4. LOCATION OF WELL (Report location clearly and in accordance with any State requirements.)

At surface

825' FSL - 1750' FWL

At proposed prod. zone

Same

## 14. DISTANCE IN MILES AND DIRECTION FROM NEAREST TOWN OR POST OFFICE\*

18 miles NE of Blanco, New Mexico

## 10. DISTANCE FROM PROPOSED\*

LOCATION TO NEAREST  
PROPERTY OR LEASE LINE, FT.

(Also to nearest drlg. unit line, if any)

825'

## 18. DISTANCE FROM PROPOSED LOCATION\*

TO NEAREST WELL, DRILLING, COMPLETED,  
OR APPLIED FOR, ON THIS LEASE, FT.

800'

## 16. NO. OF ACRES IN LEASE

639.13

## 19. PROPOSED DEPTH

3250'

## 17. NO. OF ACRES ASSIGNED

TO THIS WELL

11/319.13

## 20. ROTARY OR CABLE TOOL

Rotary

## 21. ELEVATIONS (Show whether DF, RT, GR, etc.)

DRILLING OPERATIONS AUTHORIZED ARE 6346' GL

## 23. SUBJECT TO CONTINUE WITH ATTACHED

"GENERAL REQUIREMENTS".

## PROPOSED CASING AND CEMENTING PROGRAM

This action is subject to technical and  
procedural review pursuant to 30 CFR 2165.3  
and appeal pursuant to 30 CFR 2165.4

SIZE OF HOLE	SIZE OF CASING	WEIGHT PER FOOT	SETTING DEPTH	
12 1/4"	9 5/8"	36#	300'	207 cuft to circulate
8 3/4"	7"	23#	3020'	781 cuft to circulate
6 1/4"	5 1/2"	17#	2900'-3250'	39 cuft to circulate

Purpose to spud in San Jose formation. Will drill 12 1/4" surface hole to a TD of 300: Surface casing will be run and cemented with cement returns to surface. WOC 12 hours. Test to 600 psi. Drill 8 3/4" hole with fresh water mud to intermediate TD. No abnormal pressures or poisonous gases are anticipated. Casing will be run and cemented with cement returns to surface. WOC 12 hours. Test to 1500 psi. Drill 6 1/4" hole through Fruitland Coals with water. A liner may be run if hole conditions dictate. The liner may or may not be cemented, depending on the wells natural producing ability.

Surface: State

IN ABOVE SPACE DESCRIBE PROPOSED PROGRAM: If proposal is to deepen or plug back, give data on present productive zone and proposed new productive zone. If proposal is to drill or deepen directionally, give pertinent data on subsurface locations and measured and true vertical depths. Give blowout preventer program, if any.

24.

SIGNED

William F. Clark

TITLE

Operations Manager

DATE

Oct 18, 88

(This space for Federal or State office use)

PERMIT NO.

APPROVAL DATE

APPROVED BY

TITLE

CONDITIONS OF APPROVAL, IF ANY:

DATE

APPROVED

15-1-AMENDED

\*See Instructions On Reverse Side

AMOC

James E. Edwards Jr.  
AREA MANAGER

All distances must be from the outer boundaries of the Section.

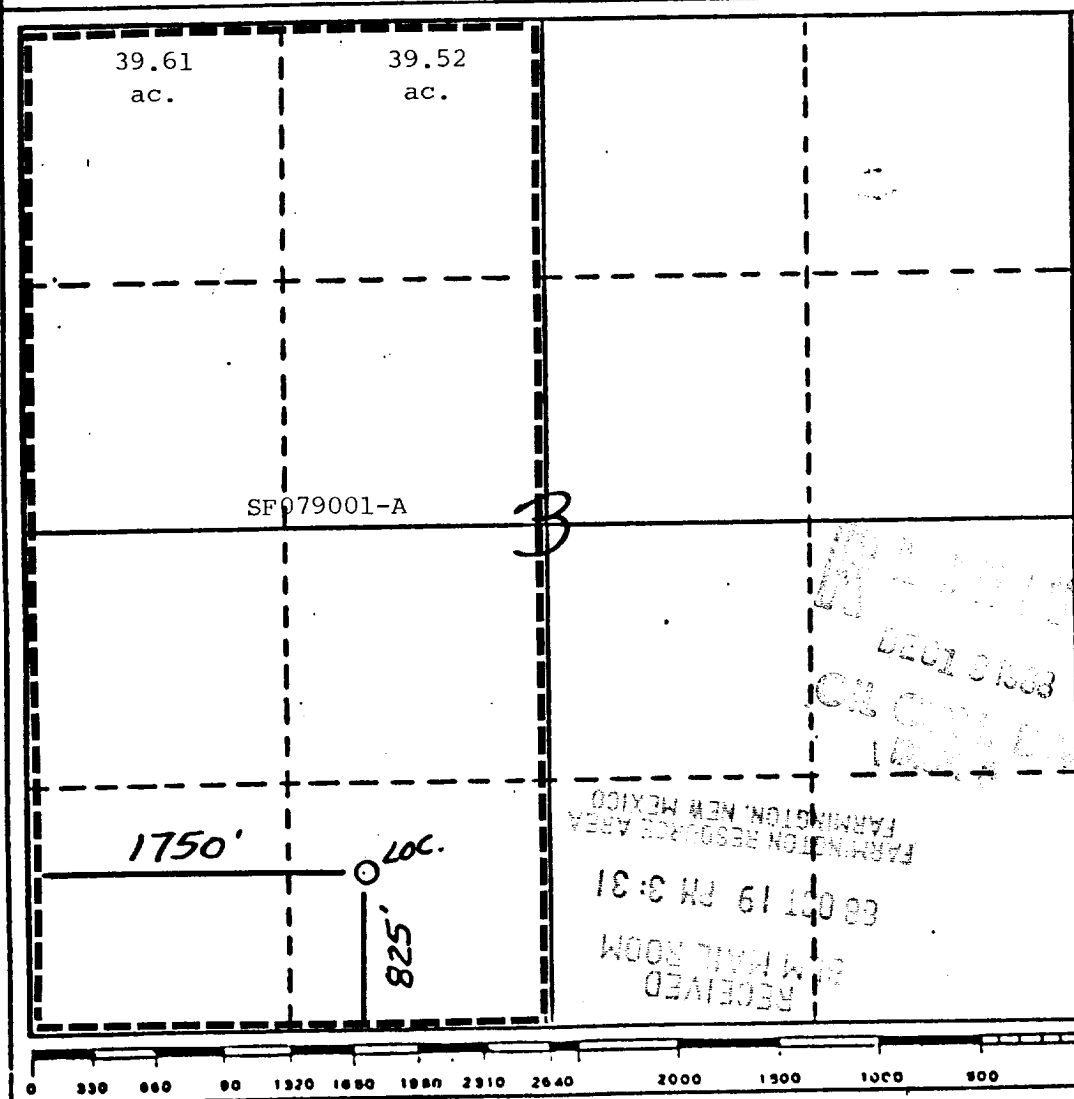
Operator Blackwood & Nichols Co., LTD.			Lease Northeast Blanco Unit		Well No. 419
Unit Letter N	Section 3	Township 30 North	Range 7 West	County Rio Arriba	
Actual Footage Location of Wells: 825 feet from the South line and 1750 feet from the West line					
Ground Level Elev. 6346'	Producing Formation Fruitland Coal		Pool Basin Fruitland Coal		Dedicated Acreage: 319.13 Acres

1. Outline the acreage dedicated to the subject well by colored pencil or hatchure marks on the plat below.
2. If more than one lease is dedicated to the well, outline each and identify the ownership thereof (both as to working interest and royalty).
3. If more than one lease of different ownership is dedicated to the well, have the interests of all owners been consolidated by communitization, unitization, force-pooling, etc?

☐ Yes ☐ No If answer is "yes," type of consolidation NA

If answer is "no," list the owners and tract descriptions which have actually been consolidated. (Use reverse side of this form if necessary.)

No allowable will be assigned to the well until all interests have been consolidated (by communitization, unitization, forced-pooling, or otherwise) or until a non-standard unit, eliminating such interests, has been approved by the Division



#### CERTIFICATION

I hereby certify that the information contained herein is true and complete to the best of my knowledge and belief.

Name  
William F. Clark  
Position  
Operations Manager

Company  
Blackwood & Nichols Co., Ltd

Date  
Oct 18, 1988

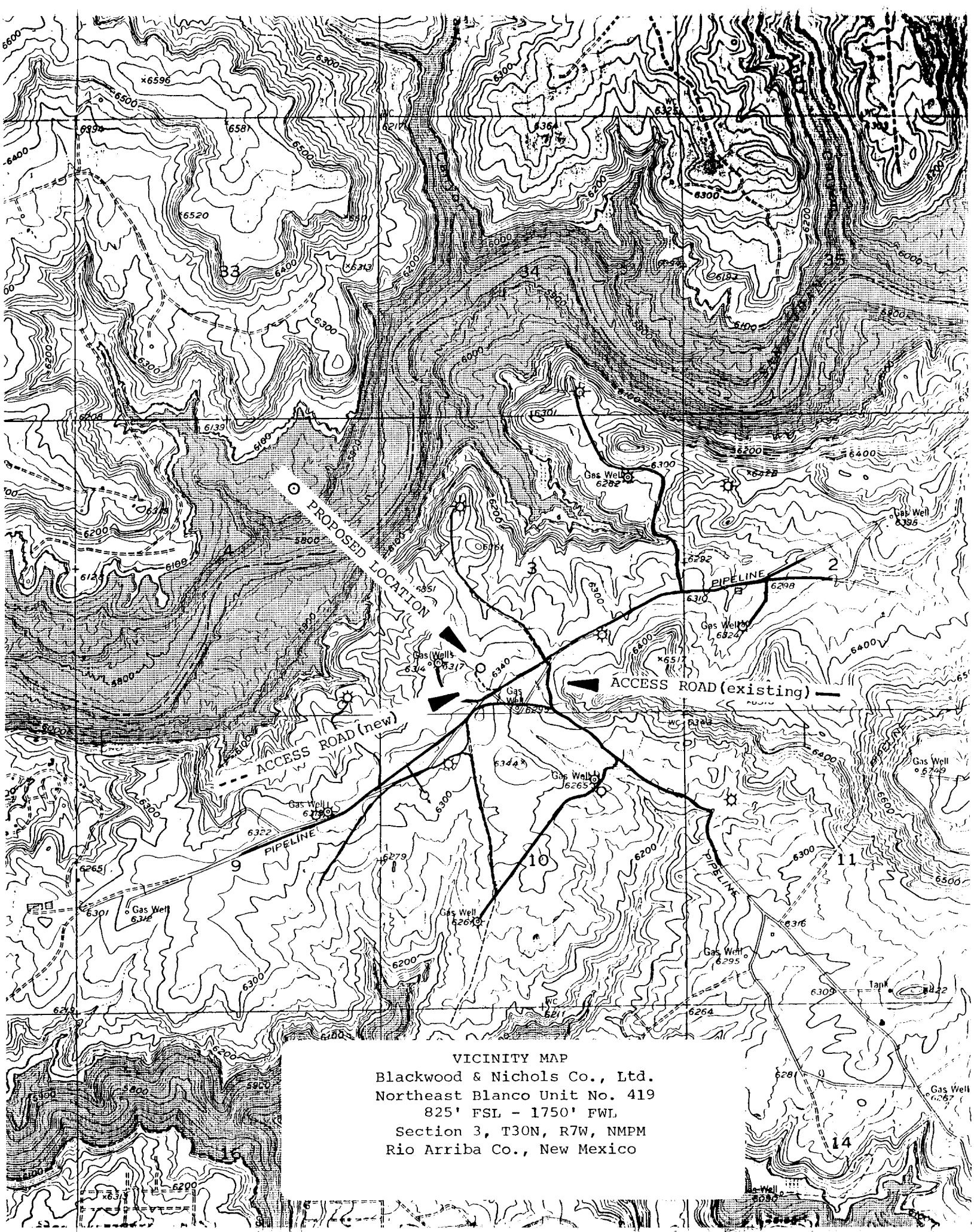
I hereby certify that the well location shown on this plat was plotted from field notes of actual surveys made by me or under my supervision, and that the same is true and correct to the best of my knowledge.

Neale C. Edwards  
Date Surveyed  
9-8-88

Registered Professional Engineer  
and/or Land Surveyor

Neale C. Edwards

Certificate No.  
6857



VICINITY MAP  
Blackwood & Nichols Co., Ltd.  
Northeast Blanco Unit No. 419  
825' FSL - 1750' FWL  
Section 3, T30N, R7W, NMPM  
Rio Arriba Co., New Mexico