

UNITED STATES  
DEPARTMENT OF THE INTERIOR  
BUREAU OF LAND MANAGEMENT

APPLICATION FOR PERMIT TO DRILL, DEEPEN, OR PLUG BACK

1a. TYPE OF WORK DRILL	5. LEASE NUMBER SF-080711B
1b. TYPE OF WELL GAS	6. IF INDIAN, ALL. OR TRIBE NAME
2. OPERATOR EL PASO NATURAL GAS CO. <i>El Pasito Oil Inc.</i>	7. UNIT AGREEMENT NAME SAN JUAN 30-6 UNIT
3. ADDRESS & PHONE NO. OF OPERATOR P O BOX 4289 FARMINGTON, NM 87499	8. FARM OR LEASE NAME SAN JUAN 30-6 UNIT
4. LOCATION OF WELL 1090' FSL 1690' FWL	9. WELL NO. 484
14. DISTANCE IN MILES FROM NEAREST TOWN 14 mi. from Gobernador	10. FIELD, POOL, OR WILDCAT BASIN FRUITLAND COAL
15. DISTANCE FROM PROPOSED LOCATION TO NEAREST PROPERTY OR LEASE LINE. 1090'	11. SEC. T. R. M OR BLK. N SEC. 34 T30N R06W NMPM
16. ACRES IN LEASE 241.90	12. COUNTY RIO ARRIBA
17. ACRES ASSIGNED TO WELL 320.00	13. STATE NM
18. DISTANCE FROM PROPOSED LOCATION TO NEAREST WELL DR. COMPL., OR APPLIED FOR ON THIS LEASE. 400'	19. PROPOSED DEPTH 3359'
20. ROTARY OR CABLE TOOLS ROTARY	
21. ELEVATIONS (DF, FT, GR, ETC.) 6450' GL 6445'	22. APPROX. DATE WORK WILL START
23. PROPOSED CASING AND CEMENTING PROGRAM	

\*SEE OPERATIONS PLAN

RECEIVED

MAY 14 1990

24. AUTHORIZED BY: *[Signature]*  
REG. DRILLING ENGR. OIL CON. DIV.  
DIST. 3

4/26/90  
DATE  
APPROVED

PERMIT NO. \_\_\_\_\_ APPROVAL DATE \_\_\_\_\_ AS AMENDED

APPROVED BY \_\_\_\_\_ TITLE \_\_\_\_\_ DATE \_\_\_\_\_  
*[Signature]* MAY 08 1990  
AREA MANAGER

NOTE: THIS FORMAT IS ISSUED IN LIEU OF US BLM FORM 3160-3.

INMOCD

THIS IS A SUMMARY OF THE INFORMATION  
CONTAINED IN THE REPORT OF THE  
OFFICE OF THE SECRETARY OF DEFENSE

RECEIVED  
MAIL ROOM  
OIL CON. DIV.  
OCT. 3

1000000

Submit to Appropriate  
District Office  
State Lease - 4 copies  
Fee Lease - 3 copies

State of New Mexico  
Energy, Minerals and Natural Resources Department

Form C-102  
Revised 1-1-89

OIL CONSERVATION DIVISION

P.O. Box 2088  
Santa Fe, New Mexico 87504-2088

DISTRICT I

P.O. Box 1980, Hobbs, NM 88240

DISTRICT II

P.O. Drawer DD, Artesia, NM 88210

DISTRICT III

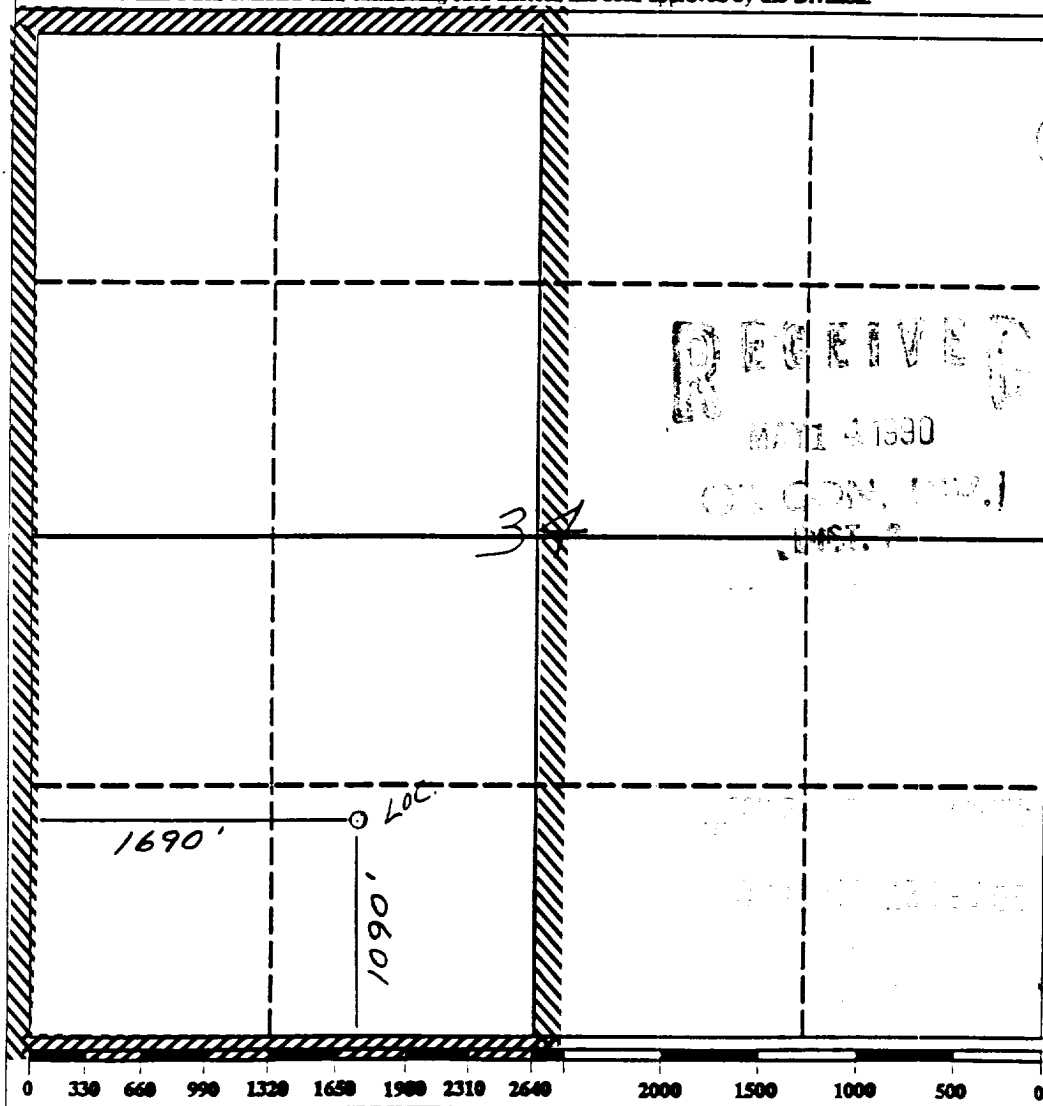
1000 Rio Brazos Rd., Aztec, NM 87410

WELL LOCATION AND ACREAGE DEDICATION PLAT

All Distances must be from the outer boundaries of the section

Operator <i>El Paso Natural Gas</i>			Lease San Juan 30-6 Unit		Well No. 484
Unit Letter N	Section 34	Township 30 North	Range 6 West	County Rio Arriba	
Actual Footage Location of Well: 1090 feet from the South line and 1690 feet from the West line					
Ground level Elev. 6445'	Producing Formation Fruitland Coal		Pool Basin	Dedicated Acreage: 320 Acres	

- Outline the acreage dedicated to the subject well by colored pencil or hatchure marks on the plat below.
- If more than one lease is dedicated to the well, outline each and identify the ownership thereof (both as to working interest and royalty).
- If more than one lease of different ownership is dedicated to the well, have the interest of all owners been consolidated by communitization, unitization, force-pooling, etc.?  
☒ Yes ☐ No If answer is "yes" type of consolidation unitization  
If answer is "no" list the owners and tract descriptions which have actually been consolidated. (Use reverse side of this form if necessary.)  
No allowable will be assigned to the well until all interests have been consolidated (by communitization, unitization, forced-pooling, or otherwise) or until a non-standard unit, eliminating such interest, has been approved by the Division.



OPERATOR CERTIFICATION

I hereby certify that the information contained herein is true and complete to the best of my knowledge and belief.

*Peggy Bradfield*  
Signature  
Peggy Bradfield

Printed Name  
Regulatory Affairs

Position  
El Paso Natural Gas

Company  
*4-26-90*

Date

SURVEYOR CERTIFICATION

I hereby certify that the well location shown on this plat was plotted from field notes of actual surveys made by me or under my supervision, and that the same is true and correct to the best of my knowledge and belief.

Date Surveyed  
*NEALE C. EDWARDS*

Signature and Seal of  
Professional Surveyor

*Neale C. Edwards*  
Certificate No.  
6857

Well Name: 484 SAN JUAN 30-6 UNIT  
 Sec. 34 T30N R06W  
 BASIN FRUITLAND COAL

1090'FSL 1690'FWL  
 RIO ARRIBA NEW MEXICO  
 Elevation 6450'GL

Formation tops: Surface- SAN JOSE  
 Ojo Alamo- 2518  
 Kirtland- 2635  
 Fruitland- 3018  
 Intermediate TD- 3154  
 Total Depth- 3359

Logging Program: Mud logs from intermediate to total depth.

Mud Program:	Interval	Type	Weight	Visc.	Fl. Loss
	0 - 200	Spud	8.4 - 8.9	40-50	no control
	200 - 3154	Non-dispersed	8.4 - 9.1	30-60	no control
	3154 - 3359	Formation Water	8.4		no control

Casing Program:	Hole Size	Depth Interval	Csg. Size	Weight	Grade
	12 1/4"	0 - 200	9 5/8"	32.3#	H-40
	8 3/4"	0 - 3154	7"	20.0#	K-55
	6 1/4"	3104 - 3359	5 1/2"	15.5#	K-55
Tubing Program:		0 - 3359	2 7/8"	6.5#	J-55

Float Equipment: 9 5/8" surface casing - saw tooth guide shoe. Centralizers will be run in accordance with Onshore Order #2.

7" intermediate casing - guide shoe and self-fill insert float valve. Three centralizers run every other joint above shoe and four centralizers run every other joint across Ojo Alamo. Run insert float one joint above the guide shoe.

5 1/2" production casing - float shoe on bottom and a pre-drilled liner run to the 7" casing with a minimum 50' overlap. Liner hanger is a double slip grip type.

Wellhead Equipment: 9 5/8" x 7" x 2 7/8" x 11" 3000 psi xmas tree assembly.

#### Cementing:

9 5/8" surface casing - cement with 160 sacks of class "B" cement with 1/4# flocele/sack and 3% calcium chloride (189 cu ft. of slurry, 200% excess to circulate to surface). WOC 12 hours. Test casing to 600 psi for 30 minutes.

7" intermediate casing - lead with 410 sacks of 65/35 class "B" poz with 6% gel, 2% calcium chloride and 1/2 cu ft. Perlite/sack (10.3 gallons of water/sack) tail with 100 sacks of class "B" with 2% calcium chloride. 939 cu ft. of slurry, 110% excess to circulate to surface. WOC 12 hours.

5 1/2" liner - do not cement.

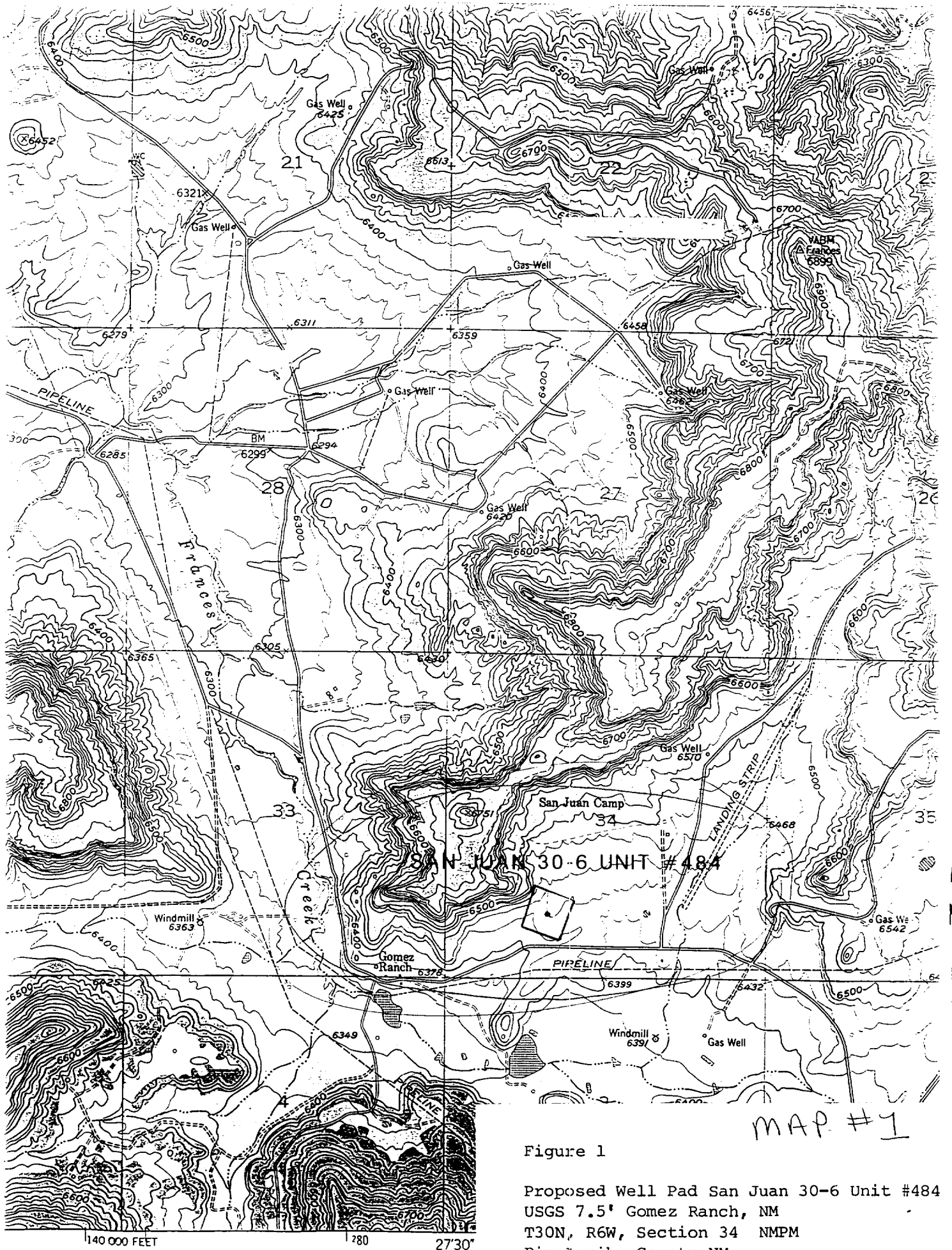


Figure 1

Proposed Well Pad San Juan 30-6 Unit #484  
 USGS 7.5' Gomez Ranch, NM  
 T30N, R6W, Section 34 NMPM  
 Rio Arriba County, NM

UNITED STATES  
DEPARTMENT OF THE INTERIOR  
BUREAU OF LAND MANAGEMENT

APPLICATION FOR PERMIT TO DRILL, DEEPEN, OR PLUG BACK

1a. TYPE OF WORK DRILL	5. LEASE NUMBER SF-080711B
1b. TYPE OF WELL GAS	6. IF INDIAN, ALL. OR TRIBE NAME
2. OPERATOR EL PASO NATURAL GAS CO. <i>Western Oil Inc.</i>	7. UNIT AGREEMENT NAME SAN JUAN 30-6 UNIT
3. ADDRESS & PHONE NO. OF OPERATOR P O BOX 4289 FARMINGTON, NM 87499	8. FARM OR LEASE NAME SAN JUAN 30-6 UNIT
4. LOCATION OF WELL 1090' FSL 1690' FWL	9. WELL NO. 484
14. DISTANCE IN MILES FROM NEAREST TOWN 14 mi. from Gobernador	10. FIELD, POOL, OR WILDCAT BASIN FRUITLAND COAL
15. DISTANCE FROM PROPOSED LOCATION 1090' TO NEAREST PROPERTY OR LEASE LINE.	11. SEC. T. R. M OR BLK. N SEC. 34 T30N R06W NMPM
16. ACRES IN LEASE 241.90	12. COUNTY RIO ARRIBA
17. ACRES ASSIGNED TO WELL 320.00	13. STATE NM
18. DISTANCE FROM PROPOSED LOCATION TO NEAREST WELL DR. 400' COMPL., OR APPLIED FOR ON THIS LEASE.	20. ROTARY OR CABLE TOOLS ROTARY
19. PROPOSED DEPTH 3359'	21. ELEVATIONS (DF, FT, GR, ETC.) 6450' GL 6445
22. APPROX. DATE WORK WILL START	23. PROPOSED CASING AND CEMENTING PROGRAM
*SEE OPERATIONS PLAN	
24. AUTHORIZED BY: <i>J. Caldwell</i> REG. DRILLING ENGR.	
OIL CON. DIV., DIST. 3	
MAY 14 1990 4/26/90 DATE	

PERMIT NO. \_\_\_\_\_ APPROVAL DATE \_\_\_\_\_ APPROVED  
APPROVED BY \_\_\_\_\_ TITLE \_\_\_\_\_ DATE \_\_\_\_\_  
AS MANAGER

NOTE: THIS FORMAT IS ISSUED IN LIEU OF US BLM FORM 3160-3

NMOCD

RECEIVED  
OIL CON. DIV.  
MAY 1 1960

RECEIVED  
OIL CON. DIV.  
MAY 1 1960

Submit to Appropriate  
District Office  
State Lease - 4 copies  
Fee Lease - 3 copies

State of New Mexico  
Energy, Minerals and Natural Resources Department

Form C-102  
Revised 1-1-89

OIL CONSERVATION DIVISION

P.O. Box 2088

Santa Fe, New Mexico 87504-2088

DISTRICT I

P.O. Box 1980, Hobbs, NM 88240

DISTRICT II

P.O. Drawer 100, Artesia, NM 88210

DISTRICT III

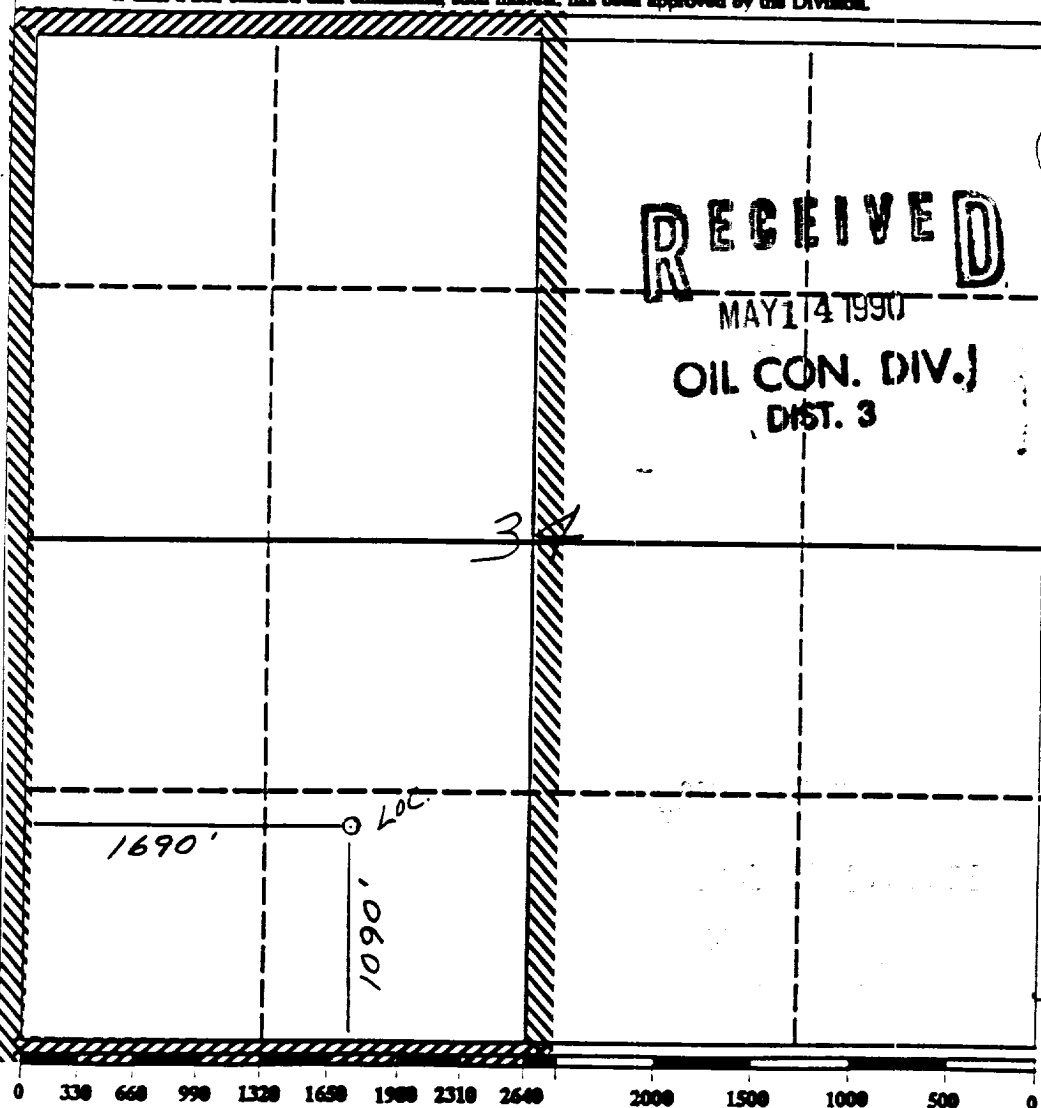
1000 Rio Brazos Rd., Aztec, NM 87410

WELL LOCATION AND ACREAGE DEDICATION PLAT

All Distances must be from the outer boundaries of the section

Operator <u>El Paso Natural Gas</u>		Lease <u>San Juan 30-6 Unit</u>		Well No. <u>484</u>
Unit Letter <u>N</u>	Section <u>34</u>	Township <u>30 North</u>	Range <u>6 West</u>	County <u>Rio Arriba</u>
Actual Footage Location of Well: <u>1090</u> feet from the <u>South</u> line and <u>1690</u> feet from the <u>West</u> line				
Ground level Elev. <u>6445'</u>	Producing Formation <u>Fruitland Coal</u>	Pool <u>Basin</u>	Dedicated Acreage: <u>320</u> Acres	

- Outline the acreage dedicated to the subject well by colored pencil or hatchure marks on the plat below.
- If more than one lease is dedicated to the well, outline each and identify the ownership thereof (both as to working interest and royalty).
- If more than one lease of different ownership is dedicated to the well, have the interest of all owners been consolidated by communitization, unitization, force-pooling, etc.?  
☒ Yes ☐ No If answer is "yes" type of consolidation unitization  
If answer is "no" list the owners and tract descriptions which have actually been consolidated. (Use reverse side of this form if necessary.)  
No allowable will be assigned to the well until all interests have been consolidated (by communitization, unitization, forced-pooling, or otherwise) or until a non-standard unit, eliminating such interest, has been approved by the Division.



OPERATOR CERTIFICATION

I hereby certify that the information contained herein is true and complete to the best of my knowledge and belief.

Peggy Bradfield  
Signature

Peggy Bradfield

Printed Name  
Regulatory Affairs

Position  
El Paso Natural Gas

Company  
4-26-90

Date

SURVEYOR CERTIFICATION

I hereby certify that the well location shown on this plat was plotted from field notes of actual surveys made by me or under my supervision, and that the same is true and correct to the best of my knowledge and belief.

Date Surveyed  
NEALE C. EDWARDS

Signature and Seal of  
Professional Surveyor

NEALE C. EDWARDS  
REGISTERED LAND SURVEYOR

6857  
Certificate No.

6857



SECRET  
OCT 1 1950  
OIL CON. DIV.  
DET. 3

Well Name: 484 SAN JUAN 30-6 UNIT  
 Sec. 34 T30N R06W  
 BASIN FRUITLAND COAL

1090' FSL 1690' FWL  
 RIO ARRIBA NEW MEXICO  
 Elevation 6450' GL

Formation tops: Surface- SAN JOSE  
 Ojo Alamo- 2518  
 Kirtland- 2635  
 Fruitland- 3018  
 Intermediate TD- 3154  
 Total Depth- 3359

Logging Program: Mud logs from intermediate to total depth.

Mud Program:	Interval	Type	Weight	Visc.	Fl. Loss
	0 - 200	Spud	8.4 - 8.9	40-50	no control
	200 - 3154	Non-dispersed	8.4 - 9.1	30-60	no control
	3154 - 3359	Formation Water	8.4		no control

Casing Program:	Hole Size	Depth Interval	Csg. Size	Weight	Grade
	12 1/4"	0 - 200	9 5/8"	32.3#	H-40
	8 3/4"	0 - 3154	7"	20.0#	K-55
	6 1/4"	3104 - 3359	5 1/2"	15.5#	K-55
Tubing Program:		0 - 3359	2 7/8"	6.5#	J-55

Float Equipment: 9 5/8" surface casing - saw tooth guide shoe. Centralizers will be run in accordance with Onshore Order #2.

7" intermediate casing - guide shoe and self-fill insert float valve. Three centralizers run every other joint above shoe and four centralizers run every other joint across Ojo Alamo. Run insert float one joint above the guide shoe.

5 1/2" production casing - float shoe on bottom and a pre-drilled liner run to the 7" casing with a minimum 50' overlap. Liner hanger is a double slip grip type.

Wellhead Equipment: 9 5/8" x 7" x 2 7/8" x 11" 3000 psi xmas tree assembly.

#### Cementing:

9 5/8" surface casing - cement with 160 sacks of class "B" cement with 1/4# flocele/sack and 3% calcium chloride (189 cu ft. of slurry, 200% excess to circulate to surface). WOC 12 hours. Test casing to 600 psi for 30 minutes.

7" intermediate casing - lead with 410 sacks of 65/35 class "B" poz with 6% gel, 2% calcium chloride and 1/2 cu ft. Perlite/sack (10.3 gallons of water/sack) tail with 100 sacks of class "B" with 2% calcium chloride. 939 cu ft. of slurry, 110% excess to circulate to surface. WOC 12 hours.

5 1/2" liner - do not cement.

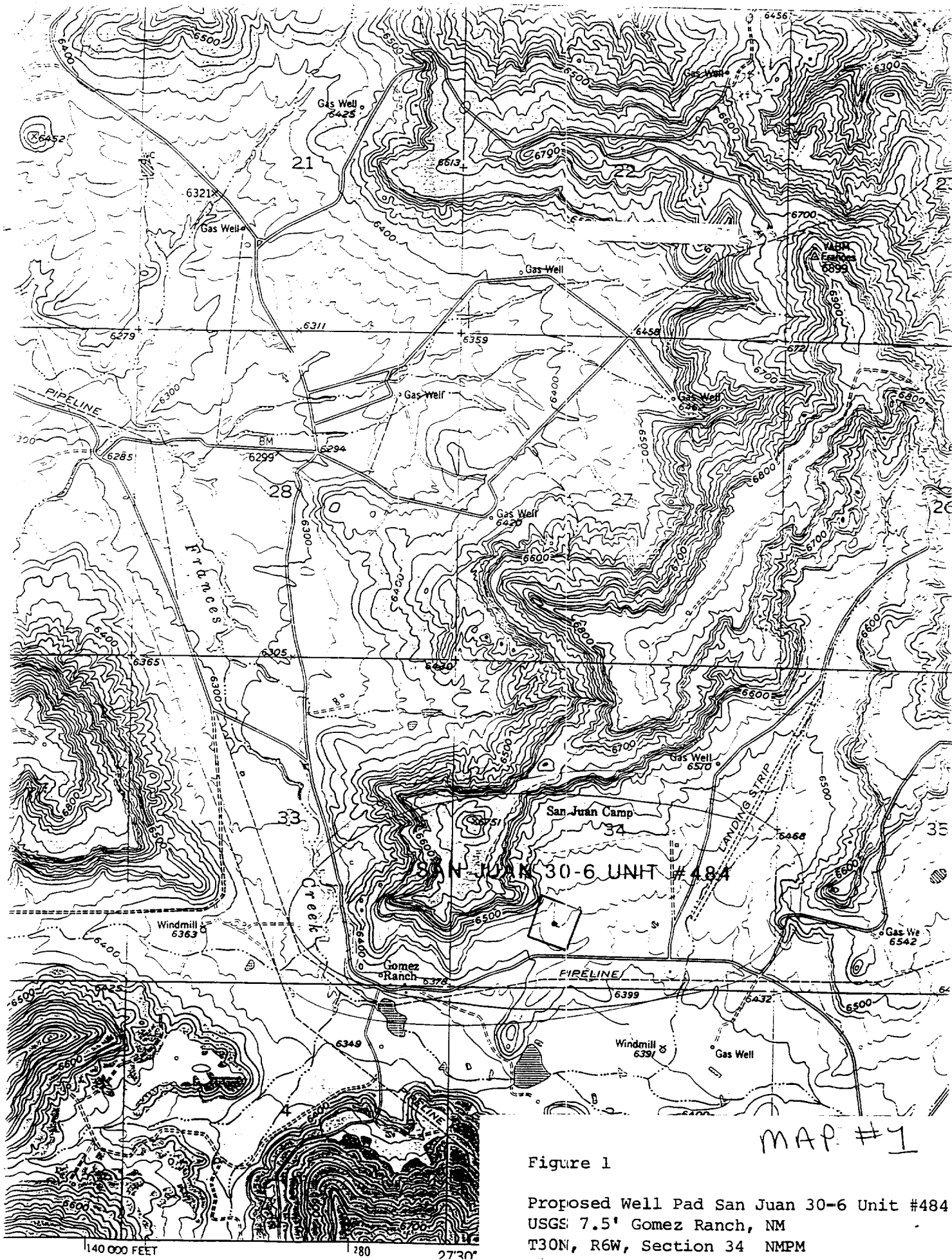


Figure 1

Proposed Well Pad San Juan 30-6 Unit #484  
 USGS 7.5' Gomez Ranch, NM  
 T30N, R6W, Section 34 NMPM