

State of New Mexico
Energy, Minerals and Natural Resources Department

Form C-101

OIL CONSERVATION DIVISION
P.O. Box 2088
Santa Fe, New Mexico 87504-2088

APPLICATION FOR PERMIT TO DRILL, DEEPEN, OR PLUG BACK		API NO. (assigned by OCD on new well) <i>30-039-24527</i>
<p style="text-align: center;">RECEIVED AUG 16 1989</p> <p style="text-align: center;">OIL CON. DIV. DIST. 3</p>		5. Indicate Type of Lease STATE
		6. State Oil & Gas Lease No. E-347-28
1a. Type of Work DRILL	OIL CON. DIV. DIST. 3	7. Lease Name or Unit Agreement Name SAN JUAN 30-6 UNIT
b. Type of Well GAS SINGLE ZONE		
2. Name of Operator MERIDIAN OIL INC.		8. Well No. 407
3. Address of Operator PO Box 4289, Farmington, NM 87499		9. Pool Name or Wildcat BASIN FRUITLAND COAL
4. Well Location Unit letter H 1540'N 1175'E Section 16 T30N R06W NMPM RIO ARRIBA COUNTY		

10. Proposed Depth 3109'		11. Formation FRUITLAND COAL	12. Rotary or C.T. Rotary
13. Elevation 6302'GL	14. Bond Type statewide	15. Drill. Contractor	16. Est. Start Date upon approval

17. PROPOSED CASING AND CEMENT PROGRAM

SIZE HOLE	SIZE CASING	WT. PER FT.	SET. DEPTH	SKS OF CEMENT	EST. TOP
12 1/4"	9 5/8"	32.3#	200 ft.	125 cu.ft.	circ surface
8 3/4"	7"	20.0#	2970 ft.	188 cu.ft.	cover O.A.
6 1/4"	5 1/2"	15.5#	3109 ft.	do not cmt.	

The Fruitland Coal formation will be completed.
A 3000 psi WP and 6000 psi test double gate preventer equipped with blind and pipe rams will be used for blow out prevention on this well. This gas is dedicated.
The E/2 of Sec 16 is dedicated to this well.

I hereby certify that the information above is true and complete to the best of my knowledge and belief.

SIGNATURE *[Signature]* TITLE Regulatory Affairs DATE 8-15-89

(This space for State Use)

APPROVED BY *[Signature]* TITLE REGULATORY AFFAIRS DATE AUG 17 1989

Conditions of approval, if any:

APPROVAL EXPIRES 2-17-90
UNLESS DRILLING IS COMMENCED.
SPUD NOTICE MUST BE SUBMITTED
WITHIN 10 DAYS.

Submit to Appropriate
District Office
State Lease - 4 copies
Fee Lease - 3 copies

State of New Mexico
Energy, Minerals and Natural Resources Department

Form C-102
Revised 1-1-89

OIL CONSERVATION DIVISION
P.O. Box 2088
Santa Fe, New Mexico 87504-2088

DISTRICT I
P.O. Box 1980, Hobbs, NM 88240

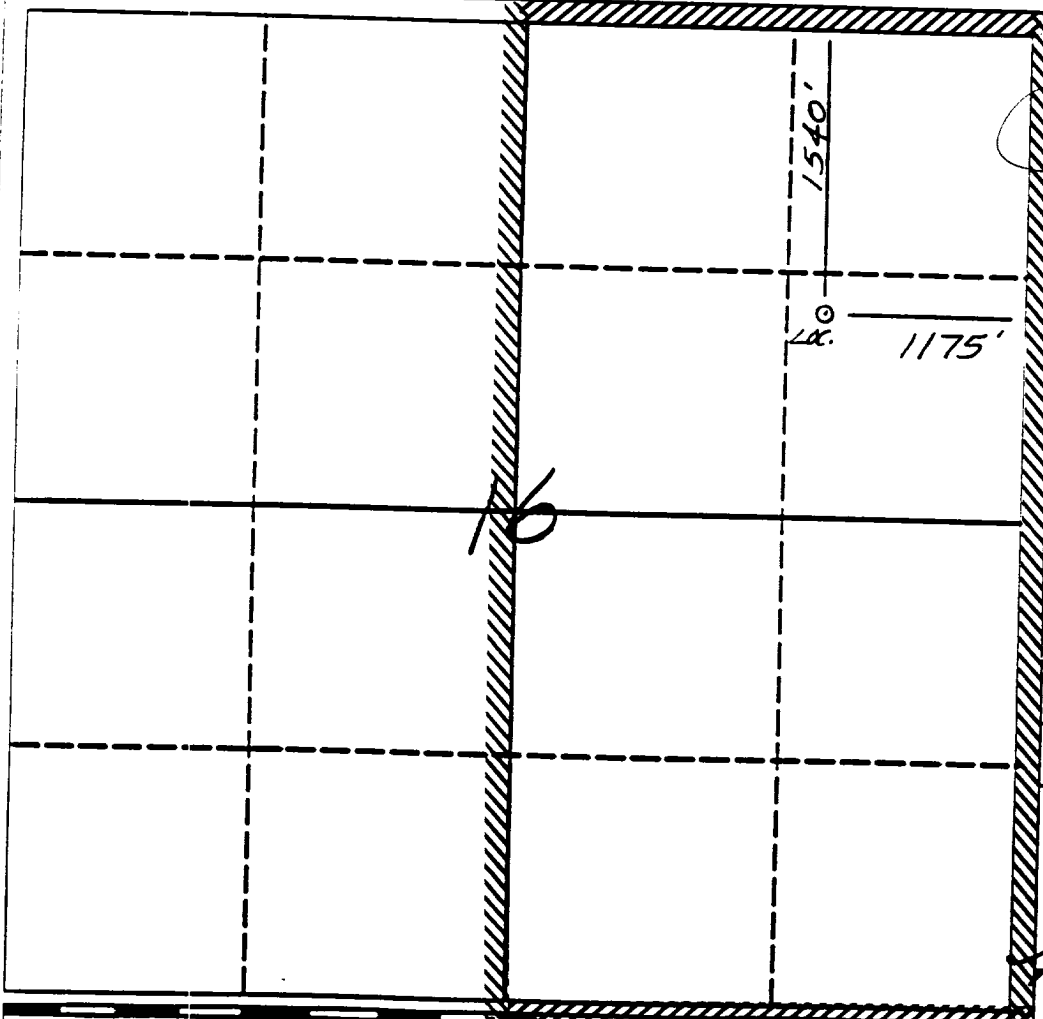
DISTRICT II
P.O. Drawer DD, Artesia, NM 88210

DISTRICT III
1000 Rio Brizos Rd., Aztec, NM 87410

WELL LOCATION AND ACREAGE DEDICATION PLAT
All Distances must be from the outer boundaries of the section

Operator <i>MPG</i> El Paso Natural Gas		Lease (E-347-28) San Juan 30-6 Unit		Well No. 407
Unit Letter H	Section 16	Township 30 North	Range 6 West	County Rio Arriba
Actual Footage Location of Well: 1540 feet from the North line and 1175 feet from the East line				
Ground level Elev. 6302	Producing Formation Fruitland Coal Basin		Pool	Dedicated Acreage: 320 Acres

- Outline the acreage dedicated to the subject well by colored pencil or hectare marks on the plat below.
 - If more than one lease is dedicated to the well, outline each and identify the ownership thereof (both as to working interest and royalty).
 - If more than one lease of different ownership is dedicated to the well, have the interest of all owners been consolidated by communitization, unitization, force-pooling, etc.?
 - Yes No
 - If answer is "yes" type of consolidation unitization
- If answer is "no" list the owners and tract descriptions which have actually been consolidated. (Use reverse side of this form if necessary.)
- No allowance will be assigned to the well until all interests have been consolidated (by communitization, unitization, forced-pooling, or otherwise) or until a non-standard unit, eliminating such interest, has been approved by the Division.



OPERATOR CERTIFICATION

I hereby certify that the information contained herein is true and complete to best of my knowledge and belief.

Peggy Bradford
Signature

Peggy Bradford
Printed Name

Regulatory Affairs
Position

El Paso Natural Gas
Company

8-15-89
Date

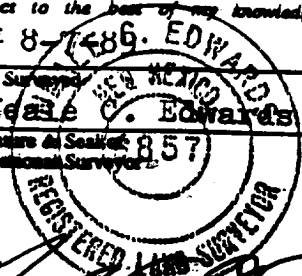
SURVEYOR CERTIFICATION

I hereby certify that the well location shown on this plat was plotted from field notes, actual surveys made by me or under my supervision, and that the same is true and correct to the best of my knowledge and belief.

8-15-89
Date Surveyed

Neal V. Edwards
Signature of Sealer

Professional Surveyor



857
Certificate No.

