

UNITED STATES
DEPARTMENT OF THE INTERIOR
BUREAU OF LAND MANAGEMENT

RECEIVED
BLM MAIL ROOM

30-039-24760 50 00 30 AM 8:23
APPLICATION FOR PERMIT TO DRILL, DEEPEN, OR PLUG BACK

1a. TYPE OF WORK DRILL	5. LEASE NUMBER NM-012709
1b. TYPE OF WELL GAS	6. IF INDIAN, ALL. OR TRIBE NAME
2. OPERATOR EL PASO NATURAL GAS CO. <i>M. J. Caldwell</i>	7. UNIT AGREEMENT NAME SAN JUAN 30-6 UNIT
3. ADDRESS & PHONE NO. OF OPERATOR P O BOX 4289 FARMINGTON, NM 87499	8. FARM OR LEASE NAME SAN JUAN 30-6 UNIT
4. LOCATION OF WELL 1310' FSL 1085' FWL	9. WELL NO. 497
10. FIELD, POOL, OR WILDCAT BASIN FRUITLAND COAL	11. SEC. T. R. M OR BLK. M SEC. 29 T30N R07W NMPM
12. COUNTY RIO ARRIBA	13. STATE NM
14. DISTANCE IN MILES FROM NEAREST TOWN 5 MILES OF NAVAJO DAM PO	15. DISTANCE FROM PROPOSED LOCATION TO NEAREST PROPERTY OR LEASE LINE. 1085'
16. ACRES IN LEASE 1420.68	17. ACRES ASSIGNED TO WELL 320.00
18. DISTANCE FROM PROPOSED LOCATION TO NEAREST WELL DR. COMPL., OR APPLIED FOR ON THIS LEASE. 400'	19. PROPOSED DEPTH 3106'
20. ROTARY OR CABLE TOOLS ROTARY	21. ELEVATIONS (DF, FT, GR, ETC.) 6271' GL
22. APPROX. DATE WORK WILL START	23. PROPOSED CASING AND CEMENTING PROGRAM

*SEE OPERATIONS PLAN

24. AUTHORIZED BY: *M. J. Caldwell*

REG. DRILLING ENGR.

RECEIVED

OCT 9 1990

OIL CON. DIV.
DIST. 3

7/26/90
DATE

PERMIT NO. _____

APPROVAL DATE _____

APPROVED BY _____

TITLE _____

DATE _____

NOTE: THIS FORMAT IS ISSUED IN LIEU OF US BLM FORM 3160-3.

OCT 9 1990

AREA M

Submit to Appropriate
District Office
State Lease - 4 copies
Fee Lease - 3 copies

State of New Mexico
Energy, Minerals and Natural Resources Department

Form C-102
Revised 1-1-89

OIL CONSERVATION DIVISION

P.O. Box 2088
Santa Fe, New Mexico 87504-2088

RECEIVED
MAIL ROOM

10 JUL 90 AM 9:23

DISTRICT I
P.O. Box 1980, Hobbs, NM 88240

DISTRICT II
P.O. Drawer DD, Artesia, NM 88210

DISTRICT III
1000 Rio Brazos Rd., Aztec, NM 87410

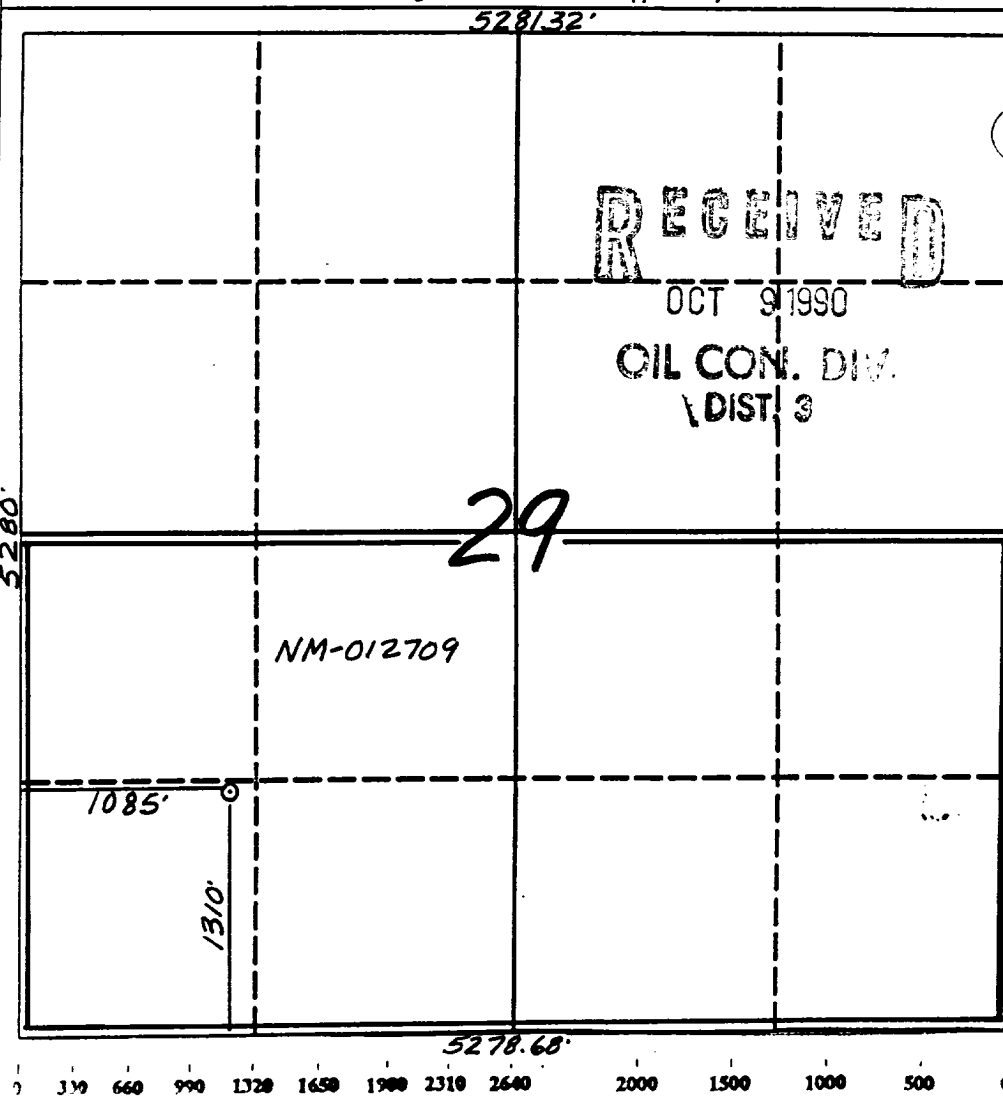
WELL LOCATION AND ACREAGE DEDICATION PLAT

All Distances must be from the outer boundaries of the section

PAID FOR BY THE AREA
SARASOTA, NEW MEXICO

Operator <i>El Paso Natural Gas</i>		Lease San Juan 30-6 Unit (NM-012709)		Well No. 497
Unit Letter M	Section 29	Township 30 North	Range 7 West	County Rio Arriba
Actual Footage Location of Well: 1310 feet from the South line and 1085 feet from the West line				
Ground level Elev. 6271'	Producing Formation Fruitland Coal		Pool Basin	Dedicated Acreage: 320 Acres

- Outline the acreage dedicated to the subject well by colored pencil or hatchure marks on the plat below.
- If more than one lease is dedicated to the well, outline each and identify the ownership thereof (both as to working interest and royalty).
- If more than one lease of different ownership is dedicated to the well, have the interest of all owners been consolidated by communitization, unitization, force-pooling, etc.?
☒ Yes ☐ No If answer is "yes" type of consolidation unitization
If answer is "no" list the owners and tract descriptions which have actually been consolidated. (Use reverse side of this form if necessary).
No allowable will be assigned to the well until all interests have been consolidated (by communitization, unitization, forced-pooling, or otherwise) or until a non-standard unit, eliminating such interest, has been approved by the Division.



OPERATOR CERTIFICATION

I hereby certify that the information contained herein is true and complete to the best of my knowledge and belief.

Peggy Bradfield
Signature

Peggy Bradfield

Printed Name

Regulatory Affairs

Position

El Paso Natural Gas

Company

7-26-90

Date

SURVEYOR CERTIFICATION

I hereby certify that the well location shown on this plat was plotted from field notes of actual surveys made by me or under my supervision, and that the same is true and correct to the best of my knowledge and belief.

6-15-90

Date Surveyed

Neale C. Edwards
Signature of Surveyor

NEW MEXICO
6857
6857
REGISTERED LAND SURVEYOR

Certificate No.
Neale C. Edwards

OPERATIONS PLAN

DATE: JUL 19, 1990

Well Name: 497 SAN JUAN 30-6 UNIT
 Sec. 29 T30N R07W
 BASIN FRUITLAND COAL

1310' FSL 1085' FWL
 RIO ARriba NEW MEXICO
 Elevation 6271' GL

Formation tops: Surface- San Jose
 Ojo Alamo- 2080
 Kirtland- 2280
 Fruitland- 2870
 Fruitland Coal Top- 3001
 Fruitland Coal Base- 3104
 Pictured Cliffs- 3123

Intermediate TD- 2981
 Total Depth- 3106

Logging Program: Mud logs from intermediate to total depth.

Mud Program:	Interval	Type	Weight	Visc.	Fl. Loss
	0 - 200	Spud	8.4 - 8.9	40-50	no control
	200 - 2981	Non-dispersed	8.4 - 9.1	30-60	no control
	2981 - 3106	Formation Water	8.4		no control

Casing Program:	Hole Size	Depth Interval	Csg. Size	Weight	Grade
	12 1/4"	0 - 200	9 5/8"	32.3#	H-40
	8 3/4"	0 - 2981	7"	20.0#	K-55
	6 1/4"	2931 - 3106	5 1/2"	15.5#	K-55
Tubing Program:		0 - 3106	2 7/8"	6.5#	J-55

Float Equipment: 9 5/8" surface casing - saw tooth guide shoe. Centralizers will be run in accordance with Onshore Order #2.

7" intermediate casing - guide shoe and self-fill insert float valve. Three centralizers run every other joint above shoe. Run insert float one joint above the guide shoe. Two turbolizing type centralizers - one below and one into the base of the Ojo Alamo @ 2280'. Standard centralizers thereafter every fourth joint up to the base of the surface pipe.

5 1/2" production casing - float shoe on bottom and a pre-drilled liner run to the 7" casing with a minimum 50' overlap. Liner hanger is a double slip grip type.

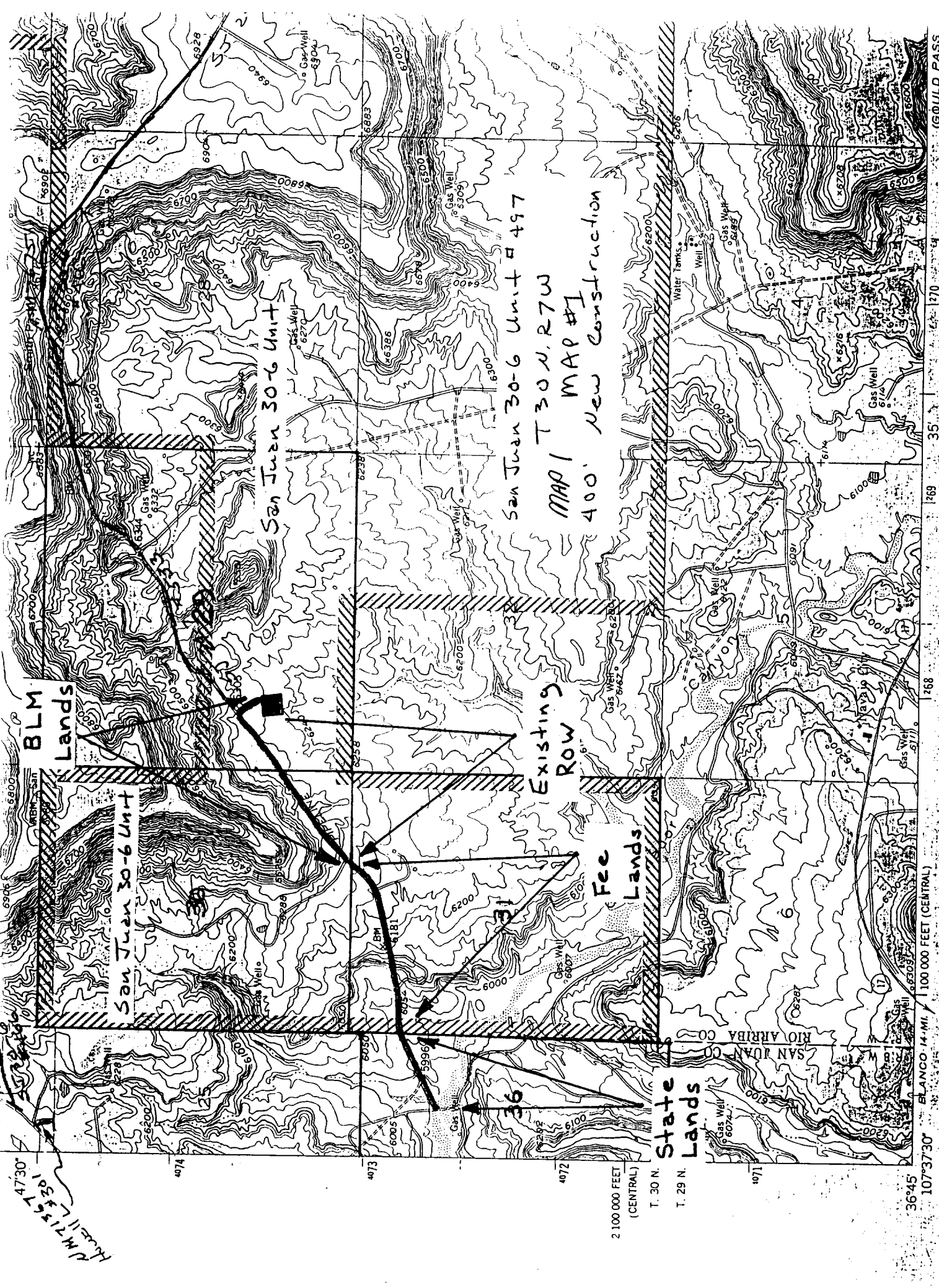
Wellhead Equipment: 9 5/8" x 7" x 2 7/8" x 11" 3000 psi xmas tree assembly.

Cementing:

9 5/8" surface casing - cement with 160 sacks of class "B" cement with 1/4# flocele/sack and 3% calcium chloride (189 cu ft. of slurry, 200% excess to circulate to surface). WOC 12 hours. Test casing to 600 psi for 30 minutes.

7" intermediate casing - lead with 431 sacks of 65/35 class "B" poz with 6% gel, 2% calcium chloride and 1/2 cu ft. Perlite/sack (10.3 gallons of water/sack) tail with 100 sacks of class "B" with 2% calcium chloride. 951 cu ft. of slurry, 110% excess to circulate to surface. If hole conditions permit, a 600 ft spacer will be run ahead of the cement slurry to avoid mud contamination of the cement. WOC 12 hours. If cement does not circulate to surface, a temperature log will be run after 8 hours to determine TOC.

5 1/2" liner - do not cement.



4730
4720
4710
4700
4690
4680
4670
4660
4650
4640
4630
4620
4610
4600
4590
4580
4570
4560
4550
4540
4530
4520
4510
4500
4490
4480
4470
4460
4450
4440
4430
4420
4410
4400
4390
4380
4370
4360
4350
4340
4330
4320
4310
4300
4290
4280
4270
4260
4250
4240
4230
4220
4210
4200
4190
4180
4170
4160
4150
4140
4130
4120
4110
4100
4090
4080
4070
4060
4050
4040
4030
4020
4010
4000
3990
3980
3970
3960
3950
3940
3930
3920
3910
3900
3890
3880
3870
3860
3850
3840
3830
3820
3810
3800
3790
3780
3770
3760
3750
3740
3730
3720
3710
3700
3690
3680
3670
3660
3650
3640
3630
3620
3610
3600
3590
3580
3570
3560
3550
3540
3530
3520
3510
3500
3490
3480
3470
3460
3450
3440
3430
3420
3410
3400
3390
3380
3370
3360
3350
3340
3330
3320
3310
3300
3290
3280
3270
3260
3250
3240
3230
3220
3210
3200
3190
3180
3170
3160
3150
3140
3130
3120
3110
3100
3090
3080
3070
3060
3050
3040
3030
3020
3010
3000
2990
2980
2970
2960
2950
2940
2930
2920
2910
2900
2890
2880
2870
2860
2850
2840
2830
2820
2810
2800
2790
2780
2770
2760
2750
2740
2730
2720
2710
2700
2690
2680
2670
2660
2650
2640
2630
2620
2610
2600
2590
2580
2570
2560
2550
2540
2530
2520
2510
2500
2490
2480
2470
2460
2450
2440
2430
2420
2410
2400
2390
2380
2370
2360
2350
2340
2330
2320
2310
2300
2290
2280
2270
2260
2250
2240
2230
2220
2210
2200
2190
2180
2170
2160
2150
2140
2130
2120
2110
2100
2090
2080
2070
2060
2050
2040
2030
2020
2010
2000
1990
1980
1970
1960
1950
1940
1930
1920
1910
1900
1890
1880
1870
1860
1850
1840
1830
1820
1810
1800
1790
1780
1770
1760
1750
1740
1730
1720
1710
1700
1690
1680
1670
1660
1650
1640
1630
1620
1610
1600
1590
1580
1570
1560
1550
1540
1530
1520
1510
1500
1490
1480
1470
1460
1450
1440
1430
1420
1410
1400
1390
1380
1370
1360
1350
1340
1330
1320
1310
1300
1290
1280
1270
1260
1250
1240
1230
1220
1210
1200
1190
1180
1170
1160
1150
1140
1130
1120
1110
1100
1090
1080
1070
1060
1050
1040
1030
1020
1010
1000
990
980
970
960
950
940
930
920
910
900
890
880
870
860
850
840
830
820
810
800
790
780
770
760
750
740
730
720
710
700
690
680
670
660
650
640
630
620
610
600
590
580
570
560
550
540
530
520
510
500
490
480
470
460
450
440
430
420
410
400
390
380
370
360
350
340
330
320
310
300
290
280
270
260
250
240
230
220
210
200
190
180
170
160
150
140
130
120
110
100
90
80
70
60
50
40
30
20
10
0

San Juan 30-6 Unit # 497
MAP 1 T30N, R7W
400' New Construction

Existing
ROW

Fee
Lands

State
Lands

2 100 000 FEET
(CENTRAL)
T. 30 N.
T. 29 N.

3645
1073730

BLANCO 14 MI. 100 000 FEET (CENTRAL)

Manned edited and published by the Geological Survey

GOULD PASS
4457 11