

(July 1992)

**UNITED STATES  
DEPARTMENT OF THE INTERIOR  
BUREAU OF LAND MANAGEMENT**

SUBMIT IN TRIPLICATE  
(Other instructions on  
reverse side)

FORM APPROVED  
OMB NO. 1004-0136  
Expires February 28, 1995

APPLICATION FOR PERMIT TO DRILL OR DEEPEN				5. LEASE DESIGNATION AND SERIAL NO
1a. TYPE OF WORK Drill <input checked="" type="checkbox"/> Deepen <input type="checkbox"/>				JIC458
b. TYPE OF WELL Oil Well <input type="checkbox"/> Gas Well <input checked="" type="checkbox"/> Other <input type="checkbox"/> Single Zone <input type="checkbox"/> Multiple Zone <input type="checkbox"/>				6. IF INDIAN, ALLOTTEE OR TRIBE NAME Jicarilla Apache
2. NAME OF OPERATOR Mallon Oil Company 13925				7. UNIT AGREEMENT NAME N/A
3. ADDRESS AND TELEPHONE NO. P.O. Box 3256 Carlsbad, NM 88220 (505) 885-4596				8. FARM OR LEASE NAME, WELL NO. Jicarilla 458-8 No. 6 22182
4. LOCATION OF WELL (Report location clearly and in accordance with any State requirements.) At surface 1050' FNL and 1700' FWL (NE NW) Unit C At proposed prod. zone 1050' FNL and 1700' FWL (NE NW) Unit C				9. API WELL NO. 30-039-25757
14. DISTANCE IN MILES AND DIRECTION FROM NEAREST TOWN OR POST OFFICE * 50 miles east of Bloomfield, New Mexico				10. FIELD AND POOL, OR WILDCAT 96772 WC 30N3008C; MANCOS (G)
15. DISTANCE FROM PROPOSED * LOCATION TO NEAREST PROPERTY OR LEASE LINE, FT. (Also to nearest drilg. unit line, if any)				11. SEC., T., R., M., OR BLK. AND SURVEY OR AREA Sec. 8, T30N-R03W
16. NO. OF ACRES IN LEASE 2249.19'				12. COUNTY OR PARISH Rio Arriba
17. NO. OF ACRES ASSIGNED TO THIS WELL 160' 150.35				13. STATE NM
18. DISTANCE FROM PROPOSED LOCATION* TO NEAREST WELL, DRILLING, COMPLETED, OR APPLIED FOR, ON THIS LEASE, FT. 2400'				19. PROPOSED DEPTH 6400'
20. ROTARY OR CABLE TOOLS Rotary				21. ELEVATIONS (SHOW WHETHER DF, RT, GR, Etc.) 7178.6
22. APPROX. DATE WORK WILL START October 20, 1997				
23. PROPOSED CASING AND CEMENTING PROGRAM				
SIZE OF HOLE	GRADE, SIZE OF CASING	WEIGHT PER FOOT	SETTING DEPTH	QUANTITY OF CEMENT
8-3/4"	7"	17# 20#	500'	Circ. to surface
6-1/4"	4-1/2"	11.6#	6400'	596-cks Surface

Mallon Oil Company proposes to drill to a depth sufficient to test the Mancos formation. If productive, 5-1/2" casing will be cemented at TD. If non-productive, the well will be plugged and abandoned in a manner consistent with Federal regulations. Specific programs as per on-shore Oil and Gas Order No. 1 are outlined in the following attachments:

**Drilling Program**

Exhibit 1: Blow Out Preventor Equipment/Plan  
Exhibit A: Location and Elevation Plat  
Exhibit B: Roads and Pipelines  
Exhibit C: One Mile Radius Map

Exhibit D: Drilling Site Layout  
Exhibit E: Production Facilities  
Exhibit F: H2S Contingency Plan  
Exhibit G: Environmental Assessment

IN ABOVE SPACE DESCRIBE PROPOSED PROGRAM: If proposal is to deepen, give data on present productive zone and proposed new productive zone. If proposal is to drill or deepen directionally, give pertinent data on subsurface locations and measured and true vertical depths. Give blowout preventer program, if any.

24.

SIGNED: Terry Lindeman TITLE: Production Superintendent DATE: 10/16/97  
Terry Lindeman

(This space for Federal or State office use)

PERMIT NO. \_\_\_\_\_ APPROVAL DATE \_\_\_\_\_

Application approval does not warrant or certify that the applicant holds legal or equitable title to those rights in the subject lease which would entitle the applicant to conduct operations thereon.

CONDITIONS OF APPROVAL, IF ANY:

APPROVED BY (Original Signed) HECTOR A. VILLALOBOS DATE DEC 1 2 1997

\*See Instructions On Reverse Side

Title 18 U.S.C. Section 1001, makes it a crime for any person knowingly and willfully to make to any department or agency of the United States any false, fictitious or fraudulent statements or representations as to any matter within its jurisdiction.

**RECEIVED**  
DEC 1 2 1997

**OIL CON. DIV.**

DISTRICT I  
P.O. Box 1980, Hobbs, N.M. 88241-1980

State of New Mexico  
Energy, Minerals & Natural Resources Department

Form C-102

Revised February 21, 1994

Instructions on back

Submit to Appropriate District Office

State Lease - 4 Copies

Fee Lease - 3 Copies

DISTRICT II  
P.O. Drawer DD, Artesia, N.M. 88211-0719

DISTRICT III  
1000 Rio Brazos Rd., Artesia, N.M. 87410

OIL CONSERVATION DIVISION

P.O. Box 2088

Santa Fe, NM 87504-2088

DISTRICT IV  
PO Box 2088, Santa Fe, NM 87504-2088

☐ AMENDED REPORT

WELL LOCATION AND ACREAGE DEDICATION PLAT

<sup>1</sup> API Number 30-039-25757	<sup>2</sup> Pool Code 96772	<sup>3</sup> Pool Name WILDCAT 30N3W8C; MANCOS (G)
<sup>4</sup> Property Code 22182	<sup>5</sup> Property Name JICARILLA 458-8	<sup>6</sup> Well Number 6
<sup>7</sup> OGRIID No. 13925	<sup>8</sup> Operator Name MALLON OIL CO.	<sup>9</sup> Elevation 7178.6'

<sup>10</sup> Surface Location

UL or lot no. C	Section 8	Township 30-N	Range 3-W	Lot Idn.	Feet from the 1050	North/South line NORTH	Feet from the 1700	East/West line WEST	County RIO ARRIBA
--------------------	--------------	------------------	--------------	----------	-----------------------	---------------------------	-----------------------	------------------------	----------------------

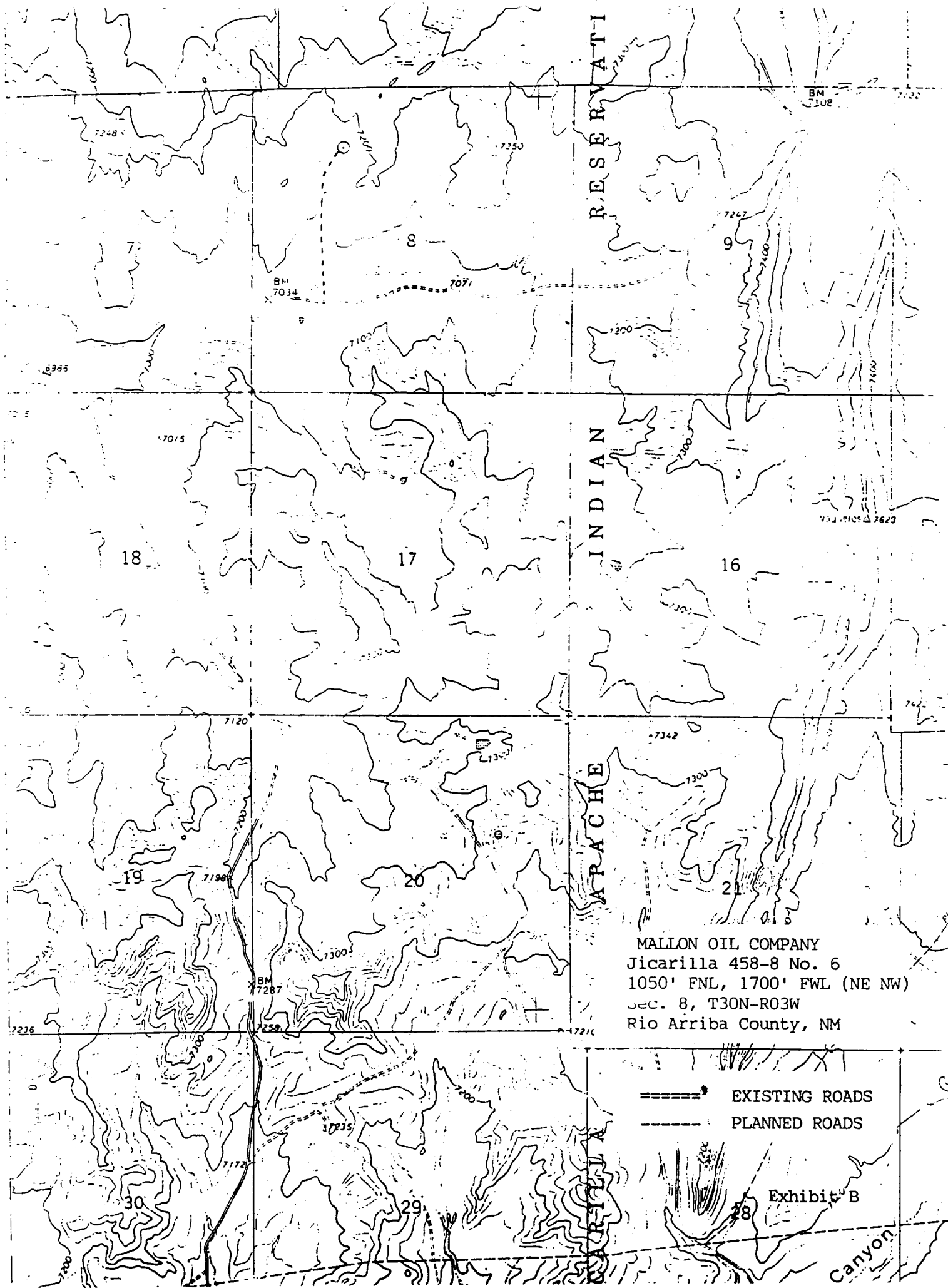
<sup>11</sup> Bottom Hole Location If Different From Surface

UL or lot no.	Section	Township	Range	Lot Idn.	Feet from the	North/South line	Feet from the	East/West line	County
---------------	---------	----------	-------	----------	---------------	------------------	---------------	----------------	--------

<sup>12</sup> Dedicated Acres 150.35	<sup>13</sup> Joint or Infill	<sup>14</sup> Consolidation Code	<sup>15</sup> Order No.
---	-------------------------------	----------------------------------	-------------------------

NO ALLOWABLE WILL BE ASSIGNED TO THIS COMPLETION UNTIL ALL INTERESTS HAVE BEEN CONSOLIDATED  
OR A NON-STANDARD UNIT HAS BEEN APPROVED BY THE DIVISION

<div>16</div> <div>3</div>	<div>17 OPERATOR CERTIFICATION</div> <p>I hereby certify that the information contained herein is true and complete to the best of my knowledge and belief.</p> <p><i>Terry Lindeman</i> Signature Terry Lindeman Printed Name Production Superintendent Title 10/9/97 Date</p>
<div>RECEIVED DEC 12 1997 OIL CON. DIV. DIST. 3</div>	<div>18 SURVEYOR CERTIFICATION</div> <p>I hereby certify that the well location shown on this plat was plotted from field notes of actual surveys made by me or under my supervision, and that the same is true and correct to the best of my belief.</p> <p>ROY A. RUSH Date of Survey NEW MEXICO REGISTERED PROFESSIONAL LAND SURVEYOR 8894 Signature and Seal of Professional Surveyor 8894 Certificate Number</p>



MALLON OIL COMPANY  
Jicarilla 458-8 No. 6  
1050' FNL, 1700' FWL (NE NW)  
Sec. 8, T30N-R03W  
Rio Arriba County, NM

===== EXISTING ROADS  
----- PLANNED ROADS

Exhibit B

Canyon