

UNITED STATES
DEPARTMENT OF THE INTERIOR
BUREAU OF LAND MANAGEMENT

APPLICATION FOR PERMIT TO DRILL, DEEPEN, OR PLUG BACK

1a. Type of Work
DRILL

1b. Type of Well
GAS

2. Operator
BURLINGTON RESOURCES Oil & Gas Company

3. Address & Phone No. of Operator
PO Box 4289, Farmington, NM 87499
(505) 326-9700

4. Location of Well
1465' FNL, 1940' FWL
Latitude 36° 48.9, Longitude 107° 26.1

5. Lease Number
SF-080713B
Unit Reporting Number

6. If Indian, All. or Tribe

7. Unit Agreement Name
San Juan 30-6 Unit

8. Farm or Lease Name
San Juan 30-6 Unit

9. Well Number
134

10. Field, Pool, Wildcat
~~Gobernador Wildcat~~ Pictured Cliffs

11. Sec., Twn, Rge, Mer. (NMPM)
Sec. 14, T-30-N, R-6-W
API # 30-039-26333

12. County
Rio Arriba

13. State
NM

14. Distance in Miles from Nearest Town
54 miles from Blanco

15. Distance from Proposed Location to Nearest Property or Lease Line
1465'

16. Acres in Lease

17. Acres Assigned to Well
160

18. Distance from Proposed Location to Nearest Well, Drlg, Compl, or Applied for on this Lease
75'

19. Proposed Depth
3400'

20. Rotary or Cable Tools
Rotary

21. Elevations (DF, FT, GR, Etc.)
6153' GR

22. Approx. Date Work will Start
1-10-00

23. Proposed Casing and Cementing Program
See Operations Plan attached

24. Authorized by: *Jerry Cole*
Regulatory/Compliance Administrator

DRILLING OPERATIONS AUTHORIZED ARE
SUBJECT TO COMPLIANCE WITH ATTACHED
"GENERAL REQUIREMENTS"

PERMIT NO. _____ APPROVAL DATE _____

APPROVED BY /s/ Charlie Beecham TITLE _____ DATE MAR 30 2000

Archaeological Report to be submitted

Threatened and Endangered Species Report to be submitted

NOTE: This format is issued in lieu of U.S. BLM Form 3160-3

Title 18 U.S.C. Section 1001, makes it a crime for any person knowingly and willfully to make to any department or agency of the United States any false, fictitious or fraudulent statements or presentations as to any matter within its jurisdiction.

NMOCD

DISTRICT I
P.O. Box 1980, Hobbs, N.M. 88241-1980

DISTRICT II
P.O. Drawer DD, Artesia, N.M. 88211-0719

DISTRICT III
1000 Rio Brazos Rd., Aztec, N.M. 87410

DISTRICT IV
PO Box 2088, Santa Fe, NM 87504-2088

State of New Mexico
Energy, Minerals & Natural Resources Department

Form C-102

Revised February 21, 1994

Instructions on back

Submit to Appropriate District Office

State Lease - 4 Copies

Fee Lease - 3 Copies

OIL CONSERVATION DIVISION

P.O. Box 2088
Santa Fe, NM 87504-2088

☐ AMENDED REPORT

WELL LOCATION AND ACREAGE DEDICATION PLAT

¹ API Number 30-039- <u>26333</u>	² Pool Code <u>WC-T30NR6W14</u>	³ Pool Name <u>Golderador Pictured Cliffs</u>
⁴ Property Code 7469	⁵ Property Name SAN JUAN 30-6 UNIT	⁶ Well Number 134
⁷ GRID No. 14538	⁸ Operator Name BURLINGTON RESOURCES OIL & GAS COMPANY	⁹ Elevation 6153'

¹⁰ Surface Location

UL or lot no.	Section	Township	Range	Lot Idn	Feet from the	North/South line	Feet from the	East/West line	County
F	14	30-N	6-W		1465	NORTH	1940	WEST	RIO ARriba

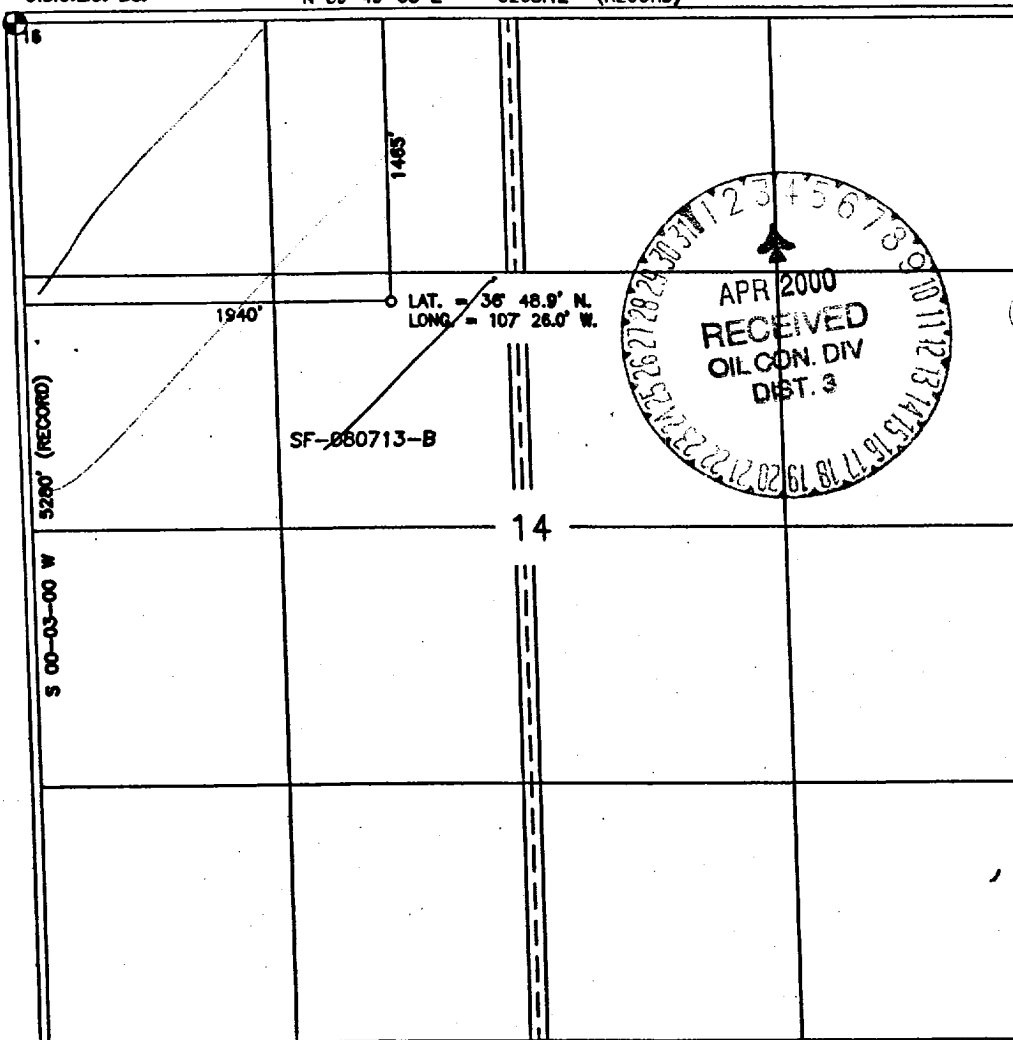
¹¹ Bottom Hole Location If Different From Surface

UL or lot no.	Section	Township	Range	Lot Idn	Feet from the	North/South line	Feet from the	East/West line	County
¹² Dedicated Acres W/320(60)	¹³ Joint or Int'l	¹⁴ Consolidation Code	¹⁵ Order No.	160 acres for density purposes for the PO 320 acres for density purposes for the PO					

NO ALLOWABLE WILL BE ASSIGNED TO THIS COMPLETION UNTIL ALL INTERESTS HAVE BEEN CONSOLIDATED
OR A NON-STANDARD UNIT HAS BEEN APPROVED BY THE DIVISION

FD. 1914
U.S.G.L.O. BC.

N 89-49-00 E 5268.12' (RECORD)



17 OPERATOR CERTIFICATION

I hereby certify that the information contained herein is true and complete to the best of my knowledge and belief

Peggy Cole
Signature

Peggy Cole
Printed Name

Regulatory Administrator
Title

1-10-00
Date

18 SURVEYOR CERTIFICATION

I hereby certify that the well location shown on this plat was plotted from field notes of actual surveys made by me or under my supervision, and that the same is true and correct to the best of my belief.

9-27-00
Date of Survey

8894
Signature and Seal

8894
Certificate Number

OPERATIONS PLAN

Well Name: San Juan 30-6 Unit #134
Location: 1465' FNL, 1940' FWL, Section 14, T-30-N, R-6-W
Rio Arriba County, New Mexico
Latitude 36° 48.9, Longitude 107° 26.1
Formation: Wildcat Pictured Cliffs
Elevation: 6153' GL

Formation:	Top	Bottom	Contents
Surface	San Jose	2125'	
Ojo Alamo	2125'	2325'	aquifer
Kirtland	2325'	2754'	gas
Fruitland	2754'	3093'	gas
Pictured Cliffs	3093'	3334'	gas
Lewis	3334'		gas
Total Depth	3400'		

Logging Program: 2400' to TD - GR-SP-IND-CNL-CDL-CAL
Surface to TD - GR-SP-IND-CAL

Coring Program: None

Mud Program:

<u>Interval</u>	<u>Type</u>	<u>Weight</u>	<u>Vis.</u>	<u>Fluid Loss</u>
0- 200'	Spud	8.4-9.0	40-50	no control
200-3400'	LSND	8.4-9.0	40-60	no control

Casing Program (as listed, equivalent, or better):

<u>Hole Size</u>	<u>Depth Interval</u>	<u>Csg. Size</u>	<u>Wt.</u>	<u>Grade</u>
12 1/4"	0 - 200'	8 5/8"	24.0#	K-55
7 7/8"	0 - 3400'	4 1/2"	10.5#	K-55

Tubing Program: 2 3/8" 4.7# J-55 to 3400'

Float Equipment: 8 5/8" surface casing - saw tooth guide shoe.
Centralizers will be run in accordance with Onshore Order #2.

4 1/2" production casing - float shoe on bottom. Three centralizers run every other joint above shoe. Seven centralizers run every 3rd joint to the base of the Ojo Alamo @ 2325'. Two turbolizing type centralizers - one below and one into the base of the Ojo Alamo @ 2325'. Standard centralizers thereafter every fourth joint up to the base of the surface pipe.

Wellhead Equipment: 8 5/8" x 4 1/2" 2000 psi screw on independent wellhead.

Cementing:

8 5/8" surface casing - cement with 210 sx Class "B" cement with 1/4# flocele/sx and 3% calcium chloride (248 cu.ft. of slurry, 200% excess to circulate to surface). WOC 8 hrs. Test casing to 600 psi for 30 minutes.

4 1/2" production casing - Lead w/495 sx Class "B" w/3% sodium metasilicate, 1/2 pps cellophane and 7 pps gilsonite. Tail w/90 sx 50/50 Class "B" Poz w/2% gel, 1/2 pps cellophane, 7 pps gilsonite and 2% calcium chloride (1550 cu.ft. of slurry, 100% excess to circulate to surface). WOC 8 hrs. If cement does not circulate to surface, a CBL will be run during completion to determine TOC.

San Juan 30-6 Unit #134

BOP and tests:

Surface to TD - 11" 2000 psi (minimum double gate BOP stack (Reference Figure #1 and #2)). Prior to drilling out surface casing, test rams to 600 psi/30 min.

Completion - 6" 2000 psi (minimum) double gate BOP stack (Reference Figure #2). Prior to completion operations, test rams and casing to 2000 psi/15 min.

From surface to TD - choke manifold (Reference Figure #3).

Pipe rams will be actuated to least once each day and blind rams actuated once each trip to test proper functioning. An upper kelly cock valve with handle and drill string safety valves to fit each drill string will be maintained and available on the rig floor.

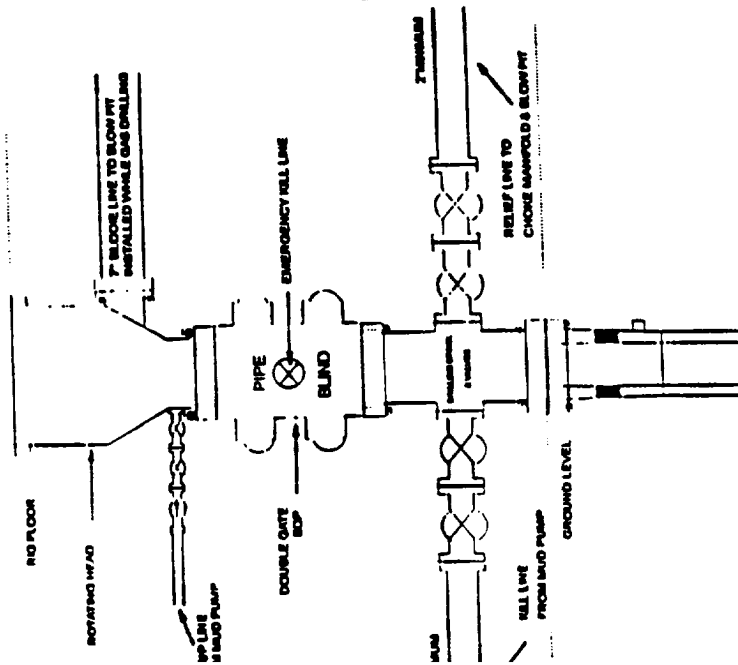
Additional information:

- * The Pictured Cliffs formation will be completed.
- * Anticipated pore pressure for the Pictured Cliffs is 600 psi.
- * This gas is dedicated.
- * The northwest quarter of Section 14 is dedicated to the Pictured Cliffs.

Redie White
Drilling Engineer

1/11/2000
Date

BOP Configuration 2M psi System

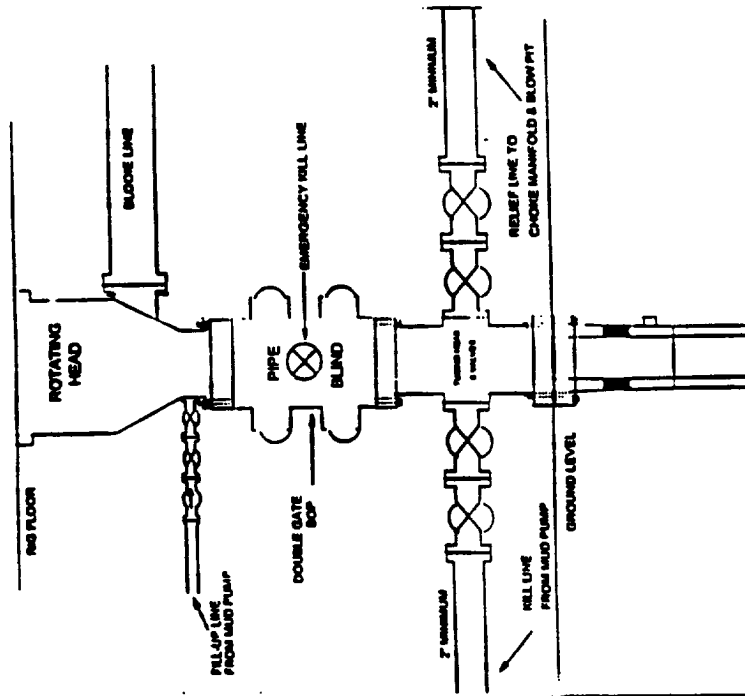


* Bore, 2000psi minimum working pressure double gate BOP to be equipped in blind and pipe rams. A Schaeffer Type 50 or equivalent rotating head to be installed on the top of the BOP. All equipment is 2000psi working pressure or better.

FIGURE #1

BURLINGTON RESOURCES

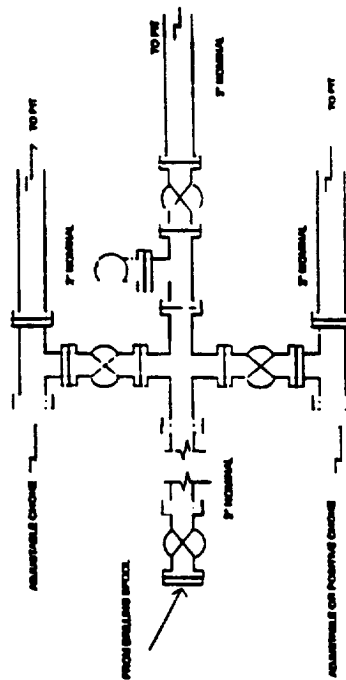
BOP Configuration 2M psi System



Minimum BOP installation for Completion operations. 7 1/16\" Bore (6\" Nominal), 2,000 psi minimum working pressure double gate BOP to be equipped with blind and pipe rams

FIGURE #2

Choke Manifold Configuration 2M System



Minimum choke manifold installation from surface to Total Depth.
2\" minimum, 2000psi working pressure equipment with two chokes

Figure #3

BURLINGTON RESOURCES OIL AND GAS COMPANY

SAN JUAN 30-6 UNIT # 134

NW/4 SEC. 14, T-30-N, R-6-W, N.M.P.M.

RIO ARRIBA COUNTY, NEW MEXICO

1465' FNL 1940' FWL

