

UNITED STATES
DEPARTMENT OF THE INTERIOR
BUREAU OF LAND MANAGEMENT

APPLICATION FOR PERMIT TO DRILL, DEEPEN, OR PLUG BACK

1a. Type of Work DRILL ✓	5. Lease Number NM-012709
1b. Type of Well GAS ✓	Unit Reporting Number
2. Operator BURLINGTON RESOURCES Oil & Gas Company	6. If Indian, All. or Tribe
3. Address & Phone No. of Operator PO Box 4289, Farmington, NM 87499 (505) 326-9700	7. Unit Agreement Name San Juan 30-6 Unit
4. Location of Well 2535' FSL, 660' FEL Latitude 36° 46.1, Longitude 107° 36.3	8. Farm or Lease Name San Juan 30-6 Unit
	9. Well Number 10B
	10. Field, Pool, Wildcat Blanco Mesaverde
	11. Sec., Twn, Rge, Mer. (NMPM) Sec. 31, T-30-N, R-7-W API # 30-039
14. Distance in Miles from Nearest Town 2 miles from Navajo City	12. County Rio Arriba
	13. State NM
15. Distance from Proposed Location to Nearest Property or Lease Line 660'	17. Acres Assigned to Well 320 E/2
16. Acres in Lease	
18. Distance from Proposed Location to Nearest Well, Drig, Compl, or Applied for on this Lease 1500'	20. Rotary or Cable Tools Rotary
19. Proposed Depth 5656' ✓	22. Approx. Date Work will Start
21. Elevations (DF, FT, GR, Etc.) 6199' GR ✓	DRILLING OPERATIONS AUTHORIZED ARE SUBJECT TO COMPLIANCE WITH ATTACHED "GENERAL REQUIREMENTS"
23. Proposed Casing and Cementing Program See Operations Plan attached	
24. Authorized by: <u><i>Jeany Cal</i></u> Regulatory/Compliance Administrator	Date <u>12-28-99</u>

PERMIT NO. _____ APPROVAL DATE _____
APPROVED BY /s/ Jim Lovato TITLE _____ DATE MAY 30 2000

Archaeological Report to be submitted
Threatened and Endangered Species Report to be submitted

NOTE: This format is issued in lieu of U.S. BLM Form 3160-3
Title 18 U.S.C. Section 1001, makes it a crime for any person knowingly and willfully to make to any department or agency of the United States any false, fictitious or fraudulent statements or presentations as to any matter within its jurisdiction.

ok off NMOCB

District I
PO Box 1980, Hobbs, NM 88241-1980

District II
PO Drawer DD, Artesia, NM 88211-0719

District III
1000 Rio Brazos Rd., Aztec, NM 87410

District IV
PO Box 2088, Santa Fe, NM 87504-2088

State of New Mexico
Energy, Minerals & Natural Resources Department

OIL CONSERVATION DIVISION
PO Box 2088
Santa Fe, NM 87504-2088

Form C-10
Revised February 21, 1999
Instructions on back
Submit to Appropriate District Office
State Lease - 4 Copies
Fee Lease - 3 Copies

☐ AMENDED REPORT

WELL LOCATION AND ACREAGE DEDICATION PLAT

1 API Number 30-039-26368		2 Pool Code 72319		3 Pool Name Blanco Mesaverde		
4 Property Code 7469		5 Property Name SAN JUAN 30-6 UNIT			6 Well Number 10B	
7 OGRID No. 14538		8 Operator Name BURLINGTON RESOURCES OIL & GAS COMPANY			9 Elevation 6199'	

10 Surface Location

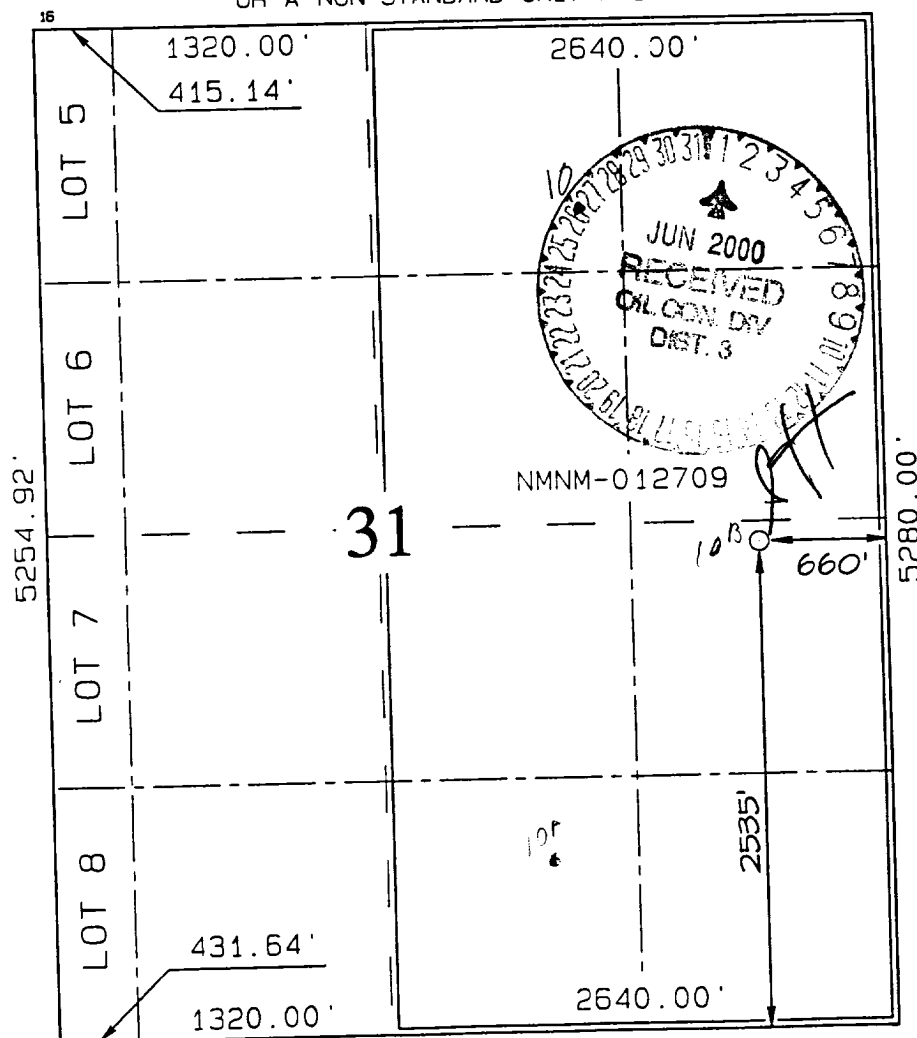
UL or lot no.	Section	Township	Range	Lot Idn	Feet from the	North/South line	Feet from the	East/West line	County
I	31	30N	7W		2535	SOUTH	660	EAST	RIO ARriba

11 Bottom Hole Location If Different From Surface

UL or lot no.	Section	Township	Range	Lot Idn	Feet from the	North/South line	Feet from the	East/West line	County

12 Dedicated Acres E/320	13 Joint or Infill	14 Consolidation Code	15 Order No.
-----------------------------	--------------------	-----------------------	--------------

NO ALLOWABLE WILL BE ASSIGNED TO THIS COMPLETION UNTIL ALL INTERESTS HAVE BEEN CONSOLIDATED OR A NON-STANDARD UNIT HAS BEEN APPROVED BY THE DIVISION



17 OPERATOR CERTIFICATION

I hereby certify that the information contained herein is true and complete to the best of my knowledge and belief.

Peggy Cole
Signature

Peggy Cole
Printed Name
Regulatory Administrator
Title

12-28-99
Date

18 SURVEYOR CERTIFICATION

I hereby certify that the well location shown on this plat was plotted from field notes of actual surveys made by me or under my supervision, and that the same is true and correct to the best of my belief.

NOVEMBER 18, 1999

Date of Survey

Signature and Seal of Professional Surveyor

[Signature]
NEALEC EDWARDS
NEW MEXICO
6857
Certificate 6857

OPERATIONS PLAN

Well Name: San Juan 30-6 Unit #10B
Surface Location: 2535' FSL, 660' FEL, Section 31, T-30-N, R-7-W
Rio Arriba County, New Mexico
Latitude 36° 46.1, Longitude 107° 36.3
Formation: Blanco Mesa Verde
Elevation: 6199' GL

<u>Formation Tops:</u>	<u>Top</u>	<u>Bottom</u>	<u>Contents</u>
Surface	San Jose	2008'	aquifer
Ojo Alamo	2008'	2141'	aquifer
Kirtland	2141'	2563'	gas
Fruitland	2563'	3061'	gas
Pictured Cliffs	3061'	3158'	gas
Lewis	3158'	3771'	gas
Intermediate TD	3258'		
Huerfanito Bentonite	3771'	4061'	
Chacra	4061'	4794'	gas
Massive Cliff House	4794'	4895'	gas
Menefee	4895'	5256'	gas
Point Lookout	5256'		gas
Total Depth	5656'		

Logging Program:

Cased hole Gamma Ray, Cement bond - surface to TD
Mud Logs/Coring/DST - none

Mud Program:

<u>Interval- MD</u>	<u>Type</u>	<u>Weight</u>	<u>Vis.</u>	<u>Fluid Loss</u>
0- 200'	Spud	8.4-9.0	40-50	no control
200- 3258'	LSND	8.4-9.0	30-60	no control
3258- 5656'	Air/Mist	n/a	n/a	n/a

Pit levels will be visually monitored to detect gain or loss of fluid control.

Casing Program (as listed, the equivalent, or better):

<u>Hole Size</u>	<u>Measured Depth</u>	<u>Csg Size</u>	<u>Weight</u>	<u>Grade</u>
12 1/4"	0' - 200'	9 5/8"	32.3#	H-40
8 3/4"	0' - 3258'	7"	20.0#	J-55
6 1/4"	3158' - 5656' ✓	4 1/2"	10.5#	J-55

Tubing Program: 0' -5656' 2 3/8" 4.7# J-55

BOP Specifications, Wellhead and Tests:

Surface to Intermediate TD -

11" 2000 psi minimum double gate BOP stack (Reference Figure #1).
After nipple-up prior to drilling out surface casing, rams and casing will be tested to 600 psi for 30 minutes.

Intermediate TD to Total Depth -

11" 2000 psi minimum double gate BOP stack (Reference Figure #1).
After nipple-up prior to drilling out intermediate casing, rams and casing will be tested to 1500 psi for 30 minutes.

BURLINGTON RESOURCES OIL & GAS COMPANY SAN JUAN 30-6 UNIT #10B

2535' FSL & 660' FEL, SECTION 31, T30N, R7W, N.M.P.M.
RIO ARRIBA COUNTY, NEW MEXICO

