

Submit 3 Copies
to Appropriate
District Office

State of New Mexico
Energy, Minerals and Natural Resources Department

Form C-103
Revised 1-1-89

DISTRICT I
P.O. Box 1980, Hobbs, NM 88240

DISTRICT II
P.O. Drawer DD, Artesia, NM 88210

DISTRICT III
1000 Rio Brazos Rd., Aztec, NM 87410

OIL CONSERVATION DIVISION
P.O. Box 2088
Santa Fe, New Mexico 87504-2088

WELL API NO.

30-045-07627

5. Indicate Type of Lease

STATE ☒

FEE ☐

6. State Oil & Gas Lease No.

7. Lease Name or Unit Agreement Name

STATE COM Y (003285)

8. Well No.

21

9. Pool name or Wildcat

AZTEC PICTURED CLIFFS (71280)

SUNDRY NOTICES AND REPORTS ON WELLS

(DO NOT USE THIS FORM FOR PROPOSALS TO DRILL OR TO DEEPEN OR PLUG BACK TO A
DIFFERENT RESERVOIR. USE "APPLICATION FOR PERMIT"
(FORM C-101) FOR SUCH PROPOSALS.)

1. Type of Well:

OIL
WELL ☐

GAS
WELL ☒

OTHER

2. Name of Operator

CONOCO INC. <005073>

3. Address of Operator

10 Desta Drive Ste 100 W. Midland, TX 79705

4. Well Location

Unit Letter N : 990 Feet From The SOUTH Line and 1650 Feet From The WEST Line

Section 36

Township

29 N

Range

10 W

NMPM

SAN JUAN

County

10. Elevation (Show whether DF, RKB, RT, GR, etc.)

11.

Check Appropriate Box to Indicate Nature of Notice, Report, or Other Data

NOTICE OF INTENTION TO:

PERFORM REMEDIAL WORK ☐

PLUG AND ABANDON ☐

TEMPORARILY ABANDON ☐

CHANGE PLANS ☐

PULL OR ALTER CASING ☐

OTHER: ☐

SUBSEQUENT REPORT OF:

REMEDIAL WORK ☐ ALTERING CASING ☐

COMMENCE DRILLING OPNS. ☐ PLUG AND ABANDONMENT ☒

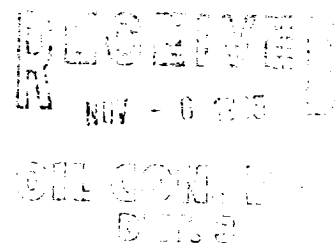
CASING TEST AND CEMENT JOB ☐

OTHER: ☐

12. Describe Proposed or Completed Operations (Clearly state all pertinent details, and give pertinent dates, including estimated date of starting any proposed work) SEE RULE 1103.

SEE ATTACHED PLUGGING REPORT FROM A - PLUG WELL SERVICE, INC.

WELL WAS PLUGGED ON 10-20-95.



I hereby certify that the information above is true and complete to the best of my knowledge and belief.

SIGNATURE

Bill R. Keathly

TITLE

SR. REGULATORY SPEC.

DATE

11-2-95

TYPE OR PRINT NAME

BILL R. KEATHLY

915-686-5424
TELEPHONE NO.

(This space for State Use)

APPROVED BY

James Carlson

TITLE

N.M.O.C.D. Deputy
O&G Inspector

DATE

3-29-96

CONDITIONS OF APPROVAL, IF ANY:

A - PLUS WELL SERVICE, INC.

P.O. BOX 1979
FARMINGTON, NM 87499
505-325-2627 • FAX: 505-325-1211

CONOCO INC.

October 23, 1995

State Com Y #21 (PC)

990' FSL, 1650' FWL, Sec. 36, T-29-N, R-10-W

San Juan County, NM.,

B-10405

Plug & Abandonment Report

Cementing Summary:

Plug #1 with 73 sxs Class B cement from 1925' to 1528' into Pictured Cliffs open hole and over Fruitland top.

Plug #2 with retainer at 884', mix 207 sxs Class B cement, squeeze 177 sxs cement outside 5-1/2" casing from 977' to 662' and leave 30 sxs cement above retainer to cover Ojo Alamo top.

Plug #3 with 101 sxs Class B cement from 266' to surface, circulate good cement out bradenhead.

Plugging Summary:

10-18-95 Held Safety Meeting. Rig up. Check well pressures: tubing and casing 140#. Lay out relief lines and bleed well down. Strip off wellhead. Strip on different wellhead and 6" BOP and test. POH and LD 91 joints 1" tubing. PU 61 joints 2-3/8" tubing work string and RIH open ended; tag bottom at 1925'. Pump 15 bbls water down tubing. Plug #1 with 73 sxs Class B cement from 1925' to 1528' into Pictured Cliffs open hole and over Fruitland top. POH and WOC. RU A-Plus wireline truck. Round-trip 5-1/2" gauge ring to 900'. Shut in well. SDFD.

10-19-95 Safety Meeting. Open up well. Bleed well down. Dig out bradenhead; found 1" water flow out of bradenhead valve. RU A-Plus wireline truck. RIH and tag cement at 1322'. Perforate 3 HSC squeeze holes at 977'. PU 5-1/2" cement retainer and RIH; set at 884'. Pressure test tubing to 1000#, held OK. Pressure test 5-1/2" casing to 500#; held OK. Sting into retainer. Establish rate into squeeze holes 2 bpm at 300#. Plug #2 with retainer at 884', mix 207 sxs Class B cement, squeeze 177 sxs cement outside 5-1/2" casing from 977' to 662' and leave 30 sxs cement above retainer to cover Ojo Alamo top. Shut in well and WOC. POH and LD tubing and setting tool. Repair pump truck. Perforate 3 squeeze holes at 226'. Plug #3 with 101 sxs Class B cement from 226' to surface, circulate good cement out bradenhead. Shut in well and WOC overnight due to bradenhead flow. SDFD.

10-20-95 Safety Meeting. Open bradenhead valve, no water flow. Dig out wellhead. Open up well. ND BOP. Cut off wellhead. Mix and pump 15 sxs Class B cement and install P&A marker. RD and move off location. J. Robinson with NMOCD was on location.