

NEW MEXICO OIL CONSERVATION COMMISSION
Santa Fe, New Mexico

Form C-101
Revised (12/1/55)

NOTICE OF INTENTION TO DRILL

Notice must be given to the District Office of the Oil Conservation Commission and approval obtained before drilling or recompletion begins. If changes in the proposed plan are considered advisable, a copy of this notice showing such changes will be returned to the sender. Submit this notice in QUINTUPLICATE. One copy will be returned following approval. See additional instructions in Rules and Regulations of the Commission. If State Land submit 6 Copies Attach Form C-128 in triplicate to first 3 copies of form C-101

Farmington, New Mexico

(Place)

November 8, 1961

(Date)

OIL CONSERVATION COMMISSION
SANTA FE, NEW MEXICO

Gentlemen:

You are hereby notified that it is our intention to commence the Drilling of a well to be known as

GEORGE E. WILLETT

(Company or Operator)

~~PINKSTAFF ESTATE~~

(Lease)

Well No. ~~POK-6-4~~, in G The well is

(Unit)

located 1983 feet from the North line and 1971 feet from the East line of Section 29, T. 29 N, R. 10 W, NMPM.

(GIVE LOCATION FROM SECTION LINE) Undesignated Pool, San Juan County

If State Land the Oil and Gas Lease is No.

If patented land the owner is Pinkstaff Estate

Address

We propose to drill well with drilling equipment as follows: rotary

The status of plugging bond is statewide

Drilling Contractor Oil Well Completions, Inc. CON. COM. DIST. 3

We intend to complete this well in the Farmington Sand formation at an approximate depth of 1000 feet.

CASING PROGRAM

We propose to use the following strings of Casing and to cement them as indicated:

Size of Hole	Size of Casing	Weight per Foot	New or Second Hand	Depth	Sacks Cement
12 1/8 "	8 5/8 "		New	100 ft.	circulated to surface
7 7/8 "	4 1/2 "	9.50 lbs.	New	1000 ft.	circulated to surface

If changes in the above plans become advisable we will notify you immediately.

ADDITIONAL INFORMATION (If recompletion give full details of proposed plan of work.)

Approved
Except as follows:

Sincerely yours,

GEORGE E. WILLETT

(Company or Operator)

By Joe Canfield

Position Agent

Send Communications regarding well to
VERITY, BURR & COOLEY

Name 152 Petroleum Center Bldg.

Address

OIL CONSERVATION COMMISSION

By

NUMBER OF COPIES RECEIVED	
DISTRIBUTION	
SANTA FE	
FILE	
U.S.G.S	
LAND OFFICE	
TRANSPORTER	OIL GAS
PRODUCTION OFFICE	
OPERATOR	

NEW MEXICO OIL CONSERVATION COMMISSION
WELL LOCATION AND ACREAGE DEDICATION PLAT
 SEE INSTRUCTIONS FOR COMPLETING THIS FORM ON THE REVERSE SIDE

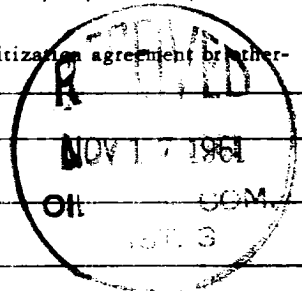
FORM C-128
 Revised 5/1/57

SECTION A

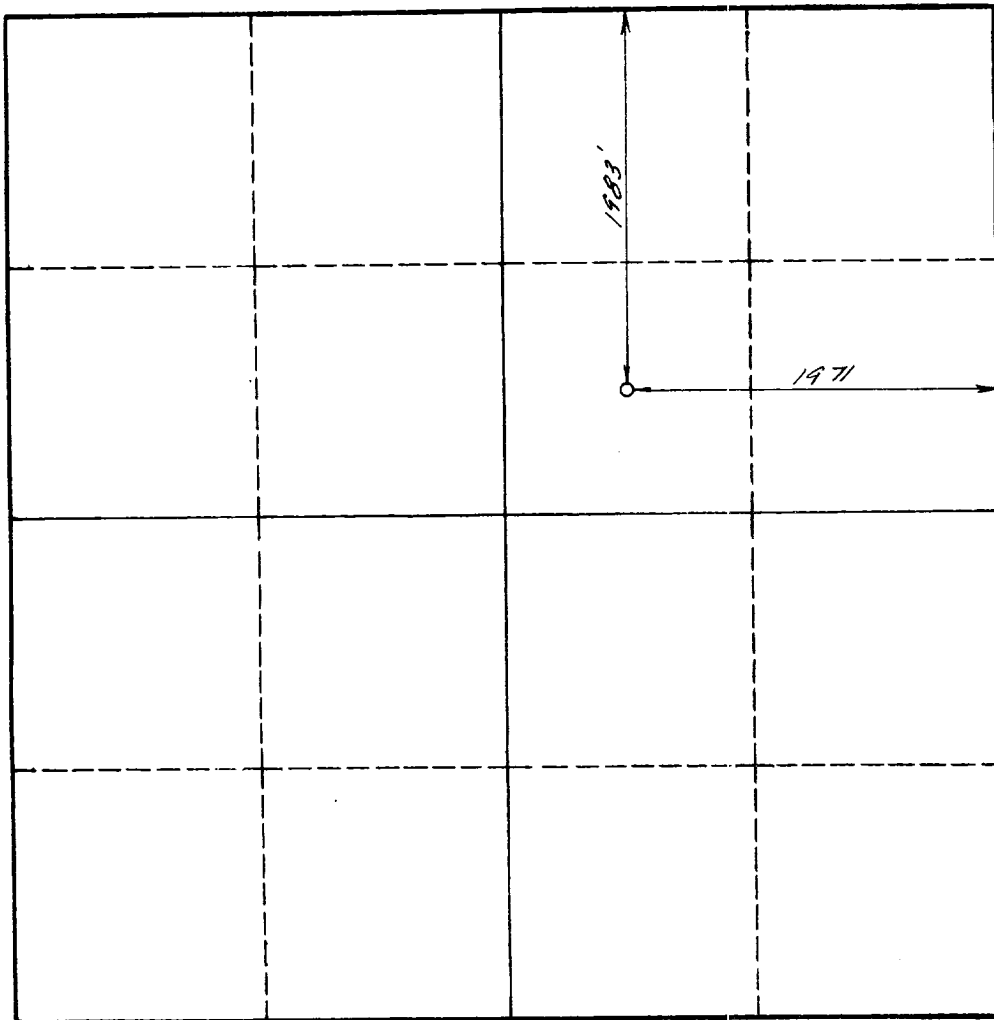
Operator GEORGE E. VILLETT		Lease MINERAL RIGHTS "POOL"		Well No. POJ-6
Unit Letter G	Section 29	Township 29N	Range 10W	County San Juan
Actual Footage Location of Well: 1983 feet from the North line and 1971 feet from the East line				
Ground Level Elev. 5512	Producing Formation Farmington Sand	Pool Undesignated	Dedicated Acreage: 40 Acres	

1. Is the Operator the only owner in the dedicated acreage outlined on the plat below? YES 1 NO ____ . ("Owner" means the person who has the right to drill into and to produce from any pool and to appropriate the production either for himself or for himself and another. (65-3-29 (e) NMSA 1935 Comp.)
2. If the answer to question one is "no," have the interests of all the owners been consolidated by communitization agreement brother-wise? YES ____ NO ____ . If answer is "yes," Type of Consolidation ____
3. If the answer to question two is "no," list all the owners and their respective interests below:

Owner	Land Description



SECTION B



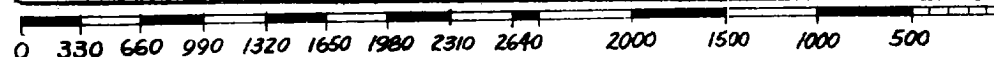
CERTIFICATION

I hereby certify that the information in SECTION A above is true and complete to the best of my knowledge and belief.

Name <i>William J. Scanlon</i>
Position Agent
Company George E. Villett
Date 11/8/61

I hereby certify that the well location shown on the plat in SECTION B was plotted from field notes of actual surveys made by me or under my supervision, and that the same is true and correct to the best of my knowledge and belief.

Date Surveyed November 8, 1961
Registered Professional Engineer and/or Land Surveyor <i>R. J. Scanlon</i>
Certificate No. 1157



INSTRUCTIONS FOR COMPLETION OF FORM C-128

1. Operator shall furnish and certify to the information called for in Section A.
2. Operator shall outline the dedicated acreage for *both* oil and gas wells on the plat in Section B.
3. A registered professional engineer or land surveyor registered in the State of New Mexico or approved by the Commission shall show on the plat the location of the well and certify this information in the space provided.
4. All distances shown on the plat must be from the outer boundaries of the Section.
5. If additional space is needed for listing owners and their respective interests as required in question 3 of Section A, please use space below.