

NEW MEXICO OIL CONSERVATION COMMISSION
Santa Fe, New Mexico

NOTICE OF INTENTION TO DRILL OR RECOMPLETE

Notice must be given to the District Office of the Oil Conservation Commission and approval obtained before drilling or recompleting begins. If changes in the proposed plan are considered advisable, a copy of this notice showing such changes will be returned to the sender. Submit this notice in **QUINTUPLICATE**. One copy will be returned following approval. See additional instructions in Rules and Regulations of the Commission.

Astec, New Mexico

(Place)

October 27, 1955

(Date)

OIL CONSERVATION COMMISSION
SANTA FE, NEW MEXICO

Gentlemen:

You are hereby notified that it is our intention to commence the (Drilling) (Recompletion) of a well to be known as

Malborne Petroleum Corporation

(Company or Operator)

M. T. Finch

(Lease)

Well No. **1**

in **A**

(Unit)

The well is

located **660** feet from the **North** line and **785** feet from the

East

line of Section **22**

T. **29N**

R. **11W**

NMPM.

(GIVE LOCATION FROM SECTION LINE)

Mildred

Pool,

San Juan

County

If State Land the Oil and Gas Lease is No.

If patented land the owner is

Address

We propose to drill well with drilling equipment as follows:

The status of plugging bond is

Drilling Contractor

We intend to complete this well in the **Farmington Sandstone**

formation at an approximate depth of feet.

CASING PROGRAM

We propose to use the following strings of Casing and to cement them as indicated:

Size of Hole	Size of Casing	Weight per Foot	New or Second Hand	Depth	Sacks Cement
	10"	(Conductor)		60' (approx)	
	8"			80' (approx)	

If changes in the above plans become advisable we will notify you immediately.

ADDITIONAL INFORMATION (If recompleting give full details of proposed plan of work.)

Approved
Except as follows:

11-2, 19**55**

Sincerely yours,

Malborne Petroleum Corporation

(Company or Operator)

By **C. M. Page**

Position **Chairman of the Board**

Send Communications regarding well to

Name **C. M. Page**

Address **712 Sims Building, Albuquerque, N.M.**

OIL CONSERVATION COMMISSION

By **C. M. Page**

Oil and Gas Inspector Dist **11**

Title

MELBORNE PETROLEUM CORPORATION,

Company BY. H. PAGE

Lease M. T. Finch Well No. 1

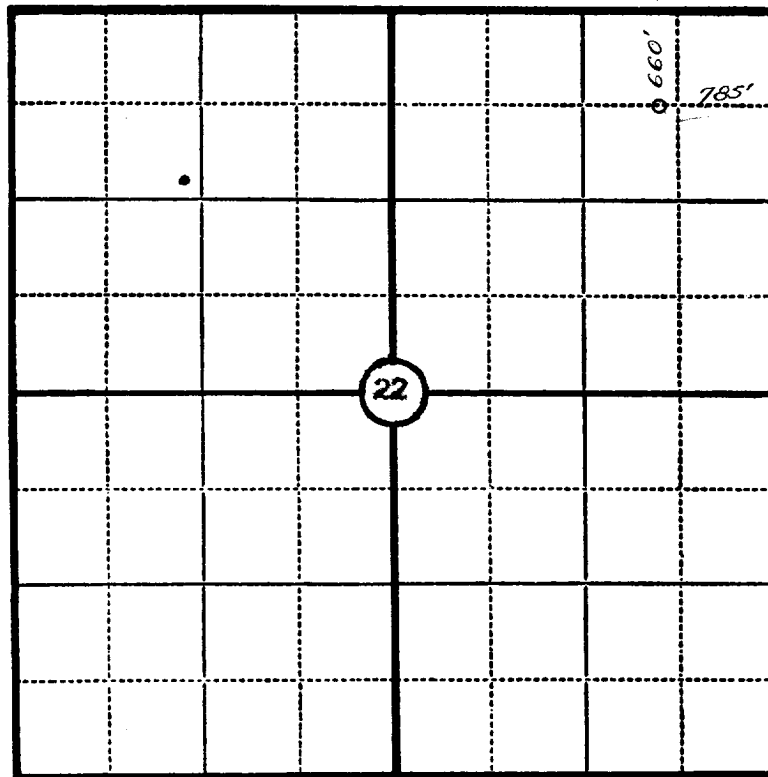
Sec. 22, T. 29 N., R. 11 W., N.M.P.M.

Location 660° FROM THE NORTH LINE AND 785° FROM THE EAST LINE.

Elevation 5482.9 UNGRADED GROUND.

SAN JUAN COUNTY

NEW MEXICO



N

Scale—4 inches equal 1 mile.

This is to certify that the above plat was prepared from field notes of actual surveys made by me or under my supervision and that the same are true and correct to the best of my knowledge and belief.

Seal:

James P. Leese

Registered Land Surveyor.

James P. Leese

N. Mex. Reg. No. 1463

Surveyed 21 October, 1955

SAN JUAN ENGINEERING COMPANY, FARMINGTON, N. M.

OIL DOWN
AD
6
1
1
1
1