

NEW MEXICO OIL CONSERVATION COMMISSION
Santa Fe, New Mexico

Form C-101
Revised (12/1/55)

NOTICE OF INTENTION TO DRILL

Notice must be given to the District Office of the Oil Conservation Commission and approval obtained before drilling or recompletion begins. If changes in the proposed plan are considered advisable, a copy of this notice showing such changes will be returned to the sender. Submit this notice in QUINTUPLICATE. One copy will be returned following approval. See additional instructions in Rules and Regulations of the Commission. If State Land submit 6 Copies Attach Form C- 128 in triplicate to first 3 copies of form C-101

Farmington, New Mexico

September 28, 1964

(Place)

(Date)

OIL CONSERVATION COMMISSION
SANTA FE, NEW MEXICO

Gentlemen:

You are hereby notified that it is our intention to commence the Drilling of a well to be known as
PAN AMERICAN PETROLEUM CORPORATION

(Company, or Operator)

Jones Gas Unit "C"

(Lease)

Well No. 1, in N The well is

(Unit)

located 980 feet from the South line and 1480 feet from the West line of Section 8, T. -29-N, R. -11-W, NMPM.

(GIVE LOCATION FROM SECTION LINE)

Basin Dakota

Pool,

San Juan

County

If State Land the Oil and Gas Lease is No.

If patented land the owner is Claude Smith H. H. Hill

Address Flagstaff, Arizona Greeley, Colorado

We propose to drill well with drilling equipment as follows: Rotary Tools to total depth.

The status of plugging bond is Statewide

Drilling Contractor Cactus Drilling Co.

Drawer 71

San Angelo, Texas

We intend to complete this well in the Dakota

formation at an approximate depth of 6650 feet.

CASING PROGRAM

We propose to use the following strings of Casing and to cement them as indicated:

Size of Hole	Size of Casing	Weight per Foot	New or Second Hand	Depth	Sacks Cement
12-1/4"	8-5/8"	24#	New	350	250 Sacks
7-7/8"	4-1/2"	10.5#	New	6650	1500 Sacks (Two
					Stage Tool set
					100' below base
					of Mesaverde)

If changes in the above plans become advisable we will notify you immediately.

ADDITIONAL INFORMATION (If recompletion give full details of proposed plan of work.)

Completion will be as indicated upon reaching total depth.
Copies of any logs run will be furnished upon completion of well.
Copies of location plat are attached.

Approved.....
Except as follows:

9-29, 1964

Sincerely yours,

PAN AMERICAN PETROLEUM CORPORATION
Fred L. Nabors, (Company or Operator) District Engineer

By.....

ORIGINAL SIGNED BY

Position F. H. HOLLINGSWORTH

Send Communications regarding well to

Name L. O. Spear, Jr.

Address Box 480, Farmington, New Mexico

OIL CONSERVATION COMMISSION

By.....

STATE OF NEW MEXICO	
OIL CONSERVATION COMMISSION	
AZTEC DISTRICT OFFICE	
NUMBER OF COPIES RECEIVED	
DISTRICT	
SANTA FE	
FILE	
U.S.G.S.	
LAND OFFICE	
TRANSPORTER	OIL
	GAS
PERMITS OFFICE	
OPERATOR	

NEW MEXICO OIL CONSERVATION COMMISSION

Well Location and Acreage Dedication Plat

Section A

Date SEPTEMBER 25, 1964

Operator PAN AMERICAN PETROLEUM CORPORATION Lease JONES GAS UNIT C
 Well No. 1 Unit Letter K Section 8 Township 29 NORTH Range 11 WEST NMPM
 Located 980 Feet From the SOUTH Line, 1480 Feet From the WEST Line
 County SAN JUAN G. L. Elevation REPORT LATER Dedicated Acreage 320 Acres
 Name of Producing Formation DAKOTA Pool BASIN DAKOTA

1. Is the Operator the only owner in the dedicated acreage outlined on the plat below?

Yes No X2. If the answer to question one is "no", have the interests of all the owners been consolidated by communitization agreement or otherwise? Yes X No If answer is "yes", Type of Consolidation Communitization agreements circulating for signature---all parties have agreed to join in drilling of well.

3. If the answer to question two is "no", list all the owners and their respective interests below.

OwnerLand Description

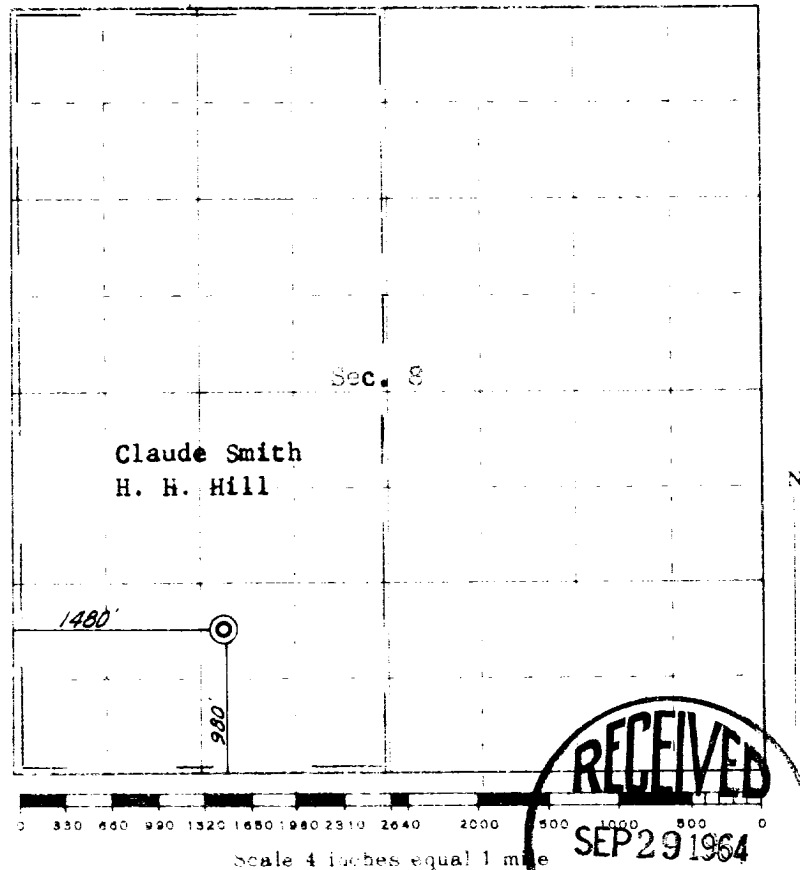
Section B.

Note: All distances must be from outer boundaries of section.

This is to certify that the information
 in Section A above is true and complete
 to the best of my knowledge and belief.

PAN AMERICAN PETROLEUM CORP.F. H. Hollingsworth (Operator)F. H. Hollingsworth
(Representative)P. O. Box 480
(Address)Farmington, New Mexico

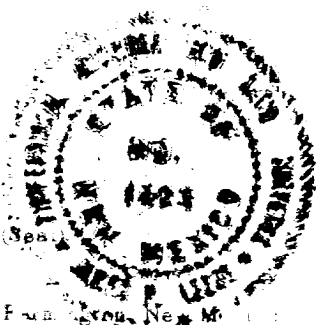
Ref: GLO plat dated 25 June 1910



This is to certify that the above plat was prepared from field notes of actual surveys made by me or under my supervision and that the same are true and correct to the best of my knowledge and belief.

Date Surveyed July 18, 1964

James P. Leese
 Registered Professional Engineer and/or Land Surveyor
 James P. Leese, N. Mex. Reg. No. 1463



STATE OF NEW MEXICO		
OIL CONSERVATION COMMISSION		
AZTEC DISTRICT OFFICE		
NUMBER OF COPIES RECEIVED		
DISTRIBUTION		
SAN JUAN		
FILE		
U.S.G.S.		
LAND OFFICE		
TRANSPORTER	OIL	
	GAS	
PRODUCTION OFFICE		
OPERATOR		