

State of New Mexico
Energy, Minerals and Natural Resources Department
Oil Conservation Division

Sundry Notices and Reports on Wells

1. Type of Well
GAS

2. Name of Operator
MERIDIAN OIL

3. Address & Phone No. of Operator
PO Box 4289, Farmington, NM 87499 (505) 326-9700

4. Location of Well, Footage, Sec., T, R, M
1650'FSL, 1650'FEL, Sec.12, T-29-N, R-11-W, NMPM, San Juan County

API # (assigned by OCD)
30-045-08501

5. Lease Number
Fee

6. State Oil&Gas Lease #

7. Lease Name/Unit Name
Garrett Com

8. Well No.
1

9. Pool Name or Wildcat
Basin Fruitland Coal

10. Elevation:

Type of Submission

☒ Notice of Intent

☐ Subsequent Report

☐ Final Abandonment

Type of Action

☐ Abandonment

☐ Recompletion

☒ Plugging Back

☐ Casing Repair

☐ Altering Casing

☐ Other -

☒ Change of Plans

☐ New Construction

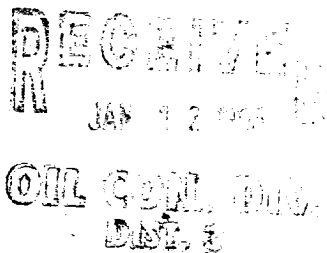
☐ Non-Routine Fracturing

☐ Water Shut off

☐ Conversion to Injection

13. Describe Proposed or Completed Operations

It is intended to temporary abandon the Pictured Cliffs formation by setting a bridge plug and recompleting to the Fruitland Coal formation according to the attached procedure and wellbore diagram. Application is being made to the New Mexico Oil Conservation Division for non-standard location.



SIGNATURE *John B. Baskin* (LJB2) Regulatory Affairs January 10, 1995

(This space for State Use)

Approved by *John B. Baskin* Title DEPUTY OIL & GAS INSPECTOR, DIST. #3 Date JAN 17 1995

Hold C-104 F&M OSL

District I
PO Box 1980, Hobbs, NM 88241-1980
District II
PO Drawer DD, Artesia, NM 88211-0719
District III
1000 Rio Brazos Rd., Aztec, NM 87410
District IV
PO Box 2088, Santa Fe, NM 87504-2088

State of New Mexico
Energy, Minerals & Natural Resources Department

OIL CONSERVATION DIVISION
PO Box 2088
Santa Fe, NM 87504-2088

Form C-1
Revised February 21, 19
Instructions on ba
Submit to Appropriate District Offi
State Lease - 4 Cop
Fee Lease - 3 Cop

☐ AMENDED REPORT

WELL LOCATION AND ACREAGE DEDICATION PLAT

API Number 30-045-08501		Pool Code 71629	Pool Name Basin Fruitland Coal
Property Code 7040	Property Name GARRETT COM		Well Number 1
OGRID No. 14538	Operator Name MERIDIAN OIL INC.		Elevation 5743'

¹⁰ Surface Location

UL or lot no.	Section	Township	Range	Lot Idn	Feet from the	North/South line	Feet from the	East/West line	County
J	12	29N	11W		1650	SOUTH	1650	EAST	S.J.

¹¹ Bottom Hole Location If Different From Surface

UL or lot no.	Section	Township	Range	Lot Idn	Feet from the	North/South line	Feet from the	East/West line	County

¹² Dedicated Acres E/320	¹³ Joint or Infill	¹⁴ Consolidation Code	¹⁵ Order No.
--	-------------------------------	----------------------------------	-------------------------

NO ALLOWABLE WILL BE ASSIGNED TO THIS COMPLETION UNTIL ALL INTERESTS HAVE BEEN CONSOLIDATED
OR A NON-STANDARD UNIT HAS BEEN APPROVED BY THE DIVISION

¹⁶ *Not resurveyed, prepared from a plat by Charles J. Pinklea, Dated 12-1-51			¹⁷ OPERATOR CERTIFICATION I hereby certify that the information contained herein is true and complete to the best of my knowledge and belief.
			Signature <i>Peggy Bradfield</i>
			Printed Name Peggy Bradfield Regulatory Affairs Title 1-10-95 Date
			¹⁸ SURVEYOR CERTIFICATION I hereby certify that the well location shown on this plat was plotted from field notes of actual surveys made by me or under my supervision, and that the same is true and correct to the best of my belief. 11-17-94 Date of Survey
Signature and Seal of Professional Surveyor: 			Certificate Number

Pertinent Data Sheet - Garrett Com #1

Location: 1650' FSL 1650' FEL. Unit J. Section 12. T29N. R11W: San Juan County, New Mexico

Field: Aztec Pictured Cliffs

Elevation: 5743' DF

TD: 2147'

PBTD: 2145'

Spud Date: 12-12-51

Completed: 03-12-52

DP #: 37224A

Casing Record:

<u>Hole Size</u>	<u>Csg Size</u>	<u>Wt. & Grade</u>	<u>Depth Set</u>	<u>Cement</u>	<u>Top/Cement</u>
13 3/4"	10 3/4"	32.0#	101'	50 sxs	Circ/Surface
7 7/8"	5 1/2"	15.0#	2071'	150 sxs	Unknown

Tubing Record:

<u>Tbg Size</u>	<u>Wt. & Grade</u>	<u>Depth Set</u>
1"		2050'

Formation Tops:

Ojo Alamo: 804'
Kirtland: 915'
Fruitland: 1730'
Pictured Cliffs: 2062'

Logging Record:

Stimulation:

Initial: 540 qts. solidified nitroglycenn. 2082'-2145' (Date - ?)
Re-Shot: 10 qts. solidified nitroglycerin. 2144'-2160' (Date - ?)

Workover History:

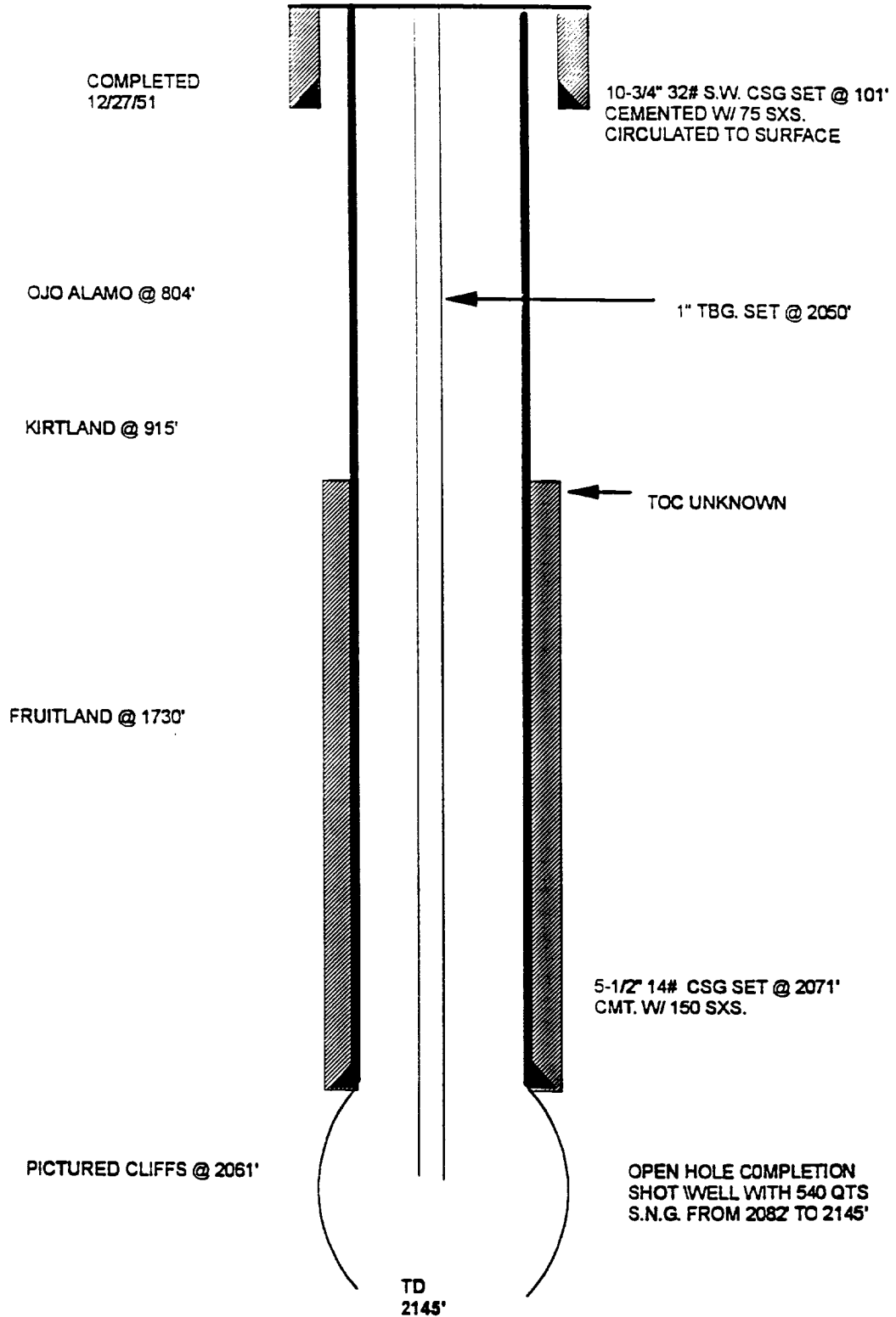
Production History:

Transporter: EPNG

GARRETT COM #1

CURRENT
AZTEC PICTURED CLIFFS

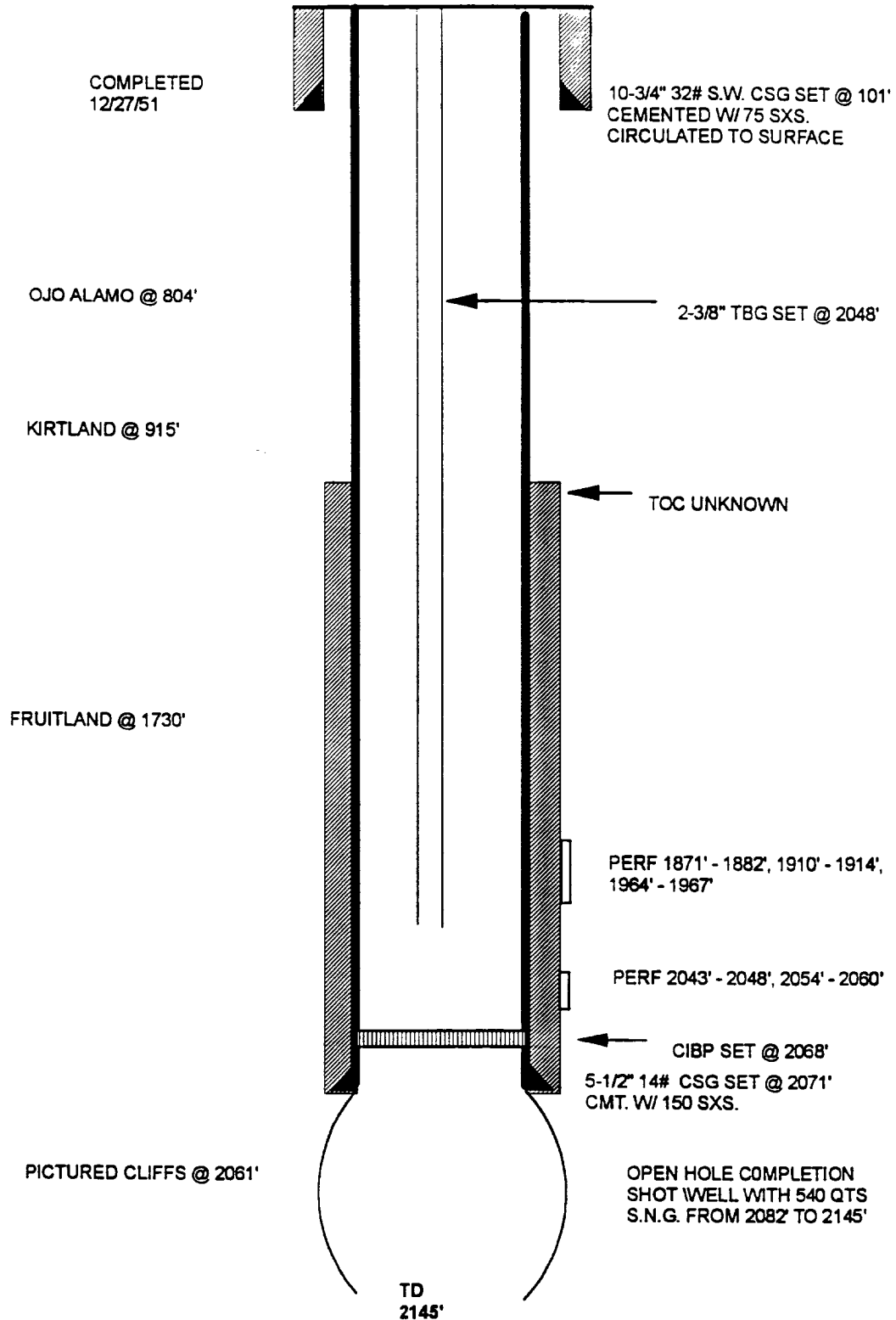
UNIT J. SEC 12, T29N, R11W, SAN JUAN COUNTY, NM



GARRETT COM #1

**PROPOSED
AZTEC PICTURED CLIFFS**

UNIT J, SEC 12, T29N, R11W, SAN JUAN COUNTY, NM



GARRETT COM #1
SE/4 Section 12 T29N R11W
Recommended Completion Procedure

1. Test rig anchors and repair if necessary. Install 1-400 bbl frac tank on location and fill with 2% KCl water. Filter all water to 25 microns. Heat water as required by weather.
2. MOL and RU. Comply to all NMOCD, BLM and MOI rules and regulations. Hold safety meeting. ND wellhead. NU BOP. Test operation of rams. NU two relief lines.
3. TOOH laying down 2050' of 1" tubing, tally and inspect.
4. TIH with 2-3/8" tubing and 4-3/4" bit and clean out to TD at 2145'. TOOH.
5. TIH with 2-3/8" tubing, 5-1/2" casing scraper and 4-3/4" bit and clean out to 2071'. Load hole with 2% KCl water. TOOH.
6. RU and RIH with CNL-CCL-GR and log from TD at 2145' to 145'.
7. RIH and wireline set 5-1/2" CIBP at 2068'. Correlate with CNL-CCL-GR to ensure CIBP is set between PC and basal FTC. Load hole with water. TOOH.
8. Run CBL from CIBP at 2068' to surface. If CBL appears inadequate, re-run log with 500 psi surface pressure. If bond still appears unacceptable, contact production engineering. Send copy of CBL to production engineering and drilling.

***** LOWER COAL *****

9. TIH with 5-1/2" fullbore packer and 2-3/8" tubing and set packer at 1993'. Load hole with 2% KCl water and test CIBP and casing to 3500 psi for 15 minutes. Test tubing / casing annulus to 500 psi for 15 minutes. Equalize pressure and unseat packer. TOOH.
10. RU wireline and perforate the following coal interval with a Select Fire 3-1/8" HSC with 10.0 gram charges, 0.30 holes at 2 SPF (correlate depths to CNL-CCL-GR log). Prior to perforating, review with production engineering.

2043' - 2048'

2054' - 2060'

Total: 11feet: 22 holes

11. TIH with 5-1/2" fullbore packer on 2-7/8" buttress tubing frac string and set packer at 1993'.
12. RU treatment company for frac. Hold safety meeting with all personnel. Pressure test surface lines to 5000 psi. Pump 200 gals. of 15% HCl ahead of frac. Fracture treat procedure will be available prior to treatment. Tag sand with 0.4 mCi/1000# of Ir-192 tracer. Flush with 9 bbls of 2% KCl water. **MAXIMUM PRESSURE IS LIMITED TO 3500 PSI!** Monitor backside and braden head pressures during frac. Monitor bottomhole and surface treating pressure, rate, foam quality and sand concentration with computer van. Frac during daylight only.

GARRETT COM #1
SE/4 Section 12 T29N R11W
Recommended Completion Procedure
Page 2

13. SI well for 2 hours for gel break.
14. After gel break, open well through choke manifold and monitor flow. Flow at 20 bbls/hr, or less if sand is observed.
15. When well ceases to flow, TOO H with 2-7/8" tubing and packer.
16. TIH with 2-3/8" tubing and notched collar and clean out to 2068'. TOO H.
17. TIH and set 5-1/2" RBP at 1987' with wireline.
18. Refill 400 bbl frac tank with 2% KCl water and filter to 25 microns. Heat water as required by weather.

***** UPPER COAL *****

19. TIH with 5-1/2" fullbore packer and 2-3/8" tubing and set packer at 1821'. Load hole with 2% KCl water and test RBP and casing to **3500 psi** for 15 minutes. Test tubing / casing annulus to **500 psi** for 15 minutes. Equalize pressure and unseat packer. TOO H.
20. RU wireline and perforate the following coal interval with a Select Fire 3-1/8" HSC with 10.0 gram charges, 0.30 holes at 2 SPF (correlate depths to CNL-CCL-GR log). Prior to perforating, review with production engineering.

1871' - 1882'

1910' - 1914'

1964' - 1967'

Total: 18 feet: 36 holes

21. TIH with 5-1/2" fullbore packer on 2-7/8" buttress tubing frac string and set packer at 1821'.
22. RU treatment company for frac. Hold safety meeting with all personnel. Pressure test surface lines to 5000 psi. Fracture treat procedure will be available prior to treatment. Tag sand with 0.4 mCi/1000# of Ir-192 tracer. Flush with 9 bbls of 2% KCl water. **MAXIMUM PRESSURE IS LIMITED TO 3500 PSI!** Monitor backside and braden head pressures during frac. Monitor bottomhole and surface treating pressure, rate, foam quality and sand concentration with computer van. Frac during daylight **only**.
23. SI well for 2 hours for gel break.
24. After gel break, open well through choke manifold and monitor flow. Flow at 20 bbls/hr, or less if sand is observed.

GARRETT COM #1
SE/4 Section 12 T29N R11W
Recommended Completion Procedure
Page 3

25. When well ceases to flow, TOOH with 2-7/8" tubing and packer.
26. TIH with 2-3/8" tubing and retrieving head and clean out upper zone until sand flow stops. **Take Pitot gauge before releasing BP.** Release RBP set at 1987' and TOOH.
27. TIH w notched collar on 2-3/8" tubing and clean out coal until sand flow stops. **Take Pitot gauge.** TOOH.
28. RU wireline and run After - Frac log from 2068' to top of tracer activity.
29. TIH with 2048' of 2-3/8" tubing with standard seating nipple one joint off bottom and pump-off plug on bottom. Land tubing string.
30. ND BOP and NU independent wellhead. Pump off plug. **Take final Pitot gauge.** Rig down and release rig.

Approve:

P. W. Bent

VENDORS:

Wireline:	Petro	325-6669
Fracturing:	Western	327-6222
R.A. tagging	Protechnics	326-7133

LJB