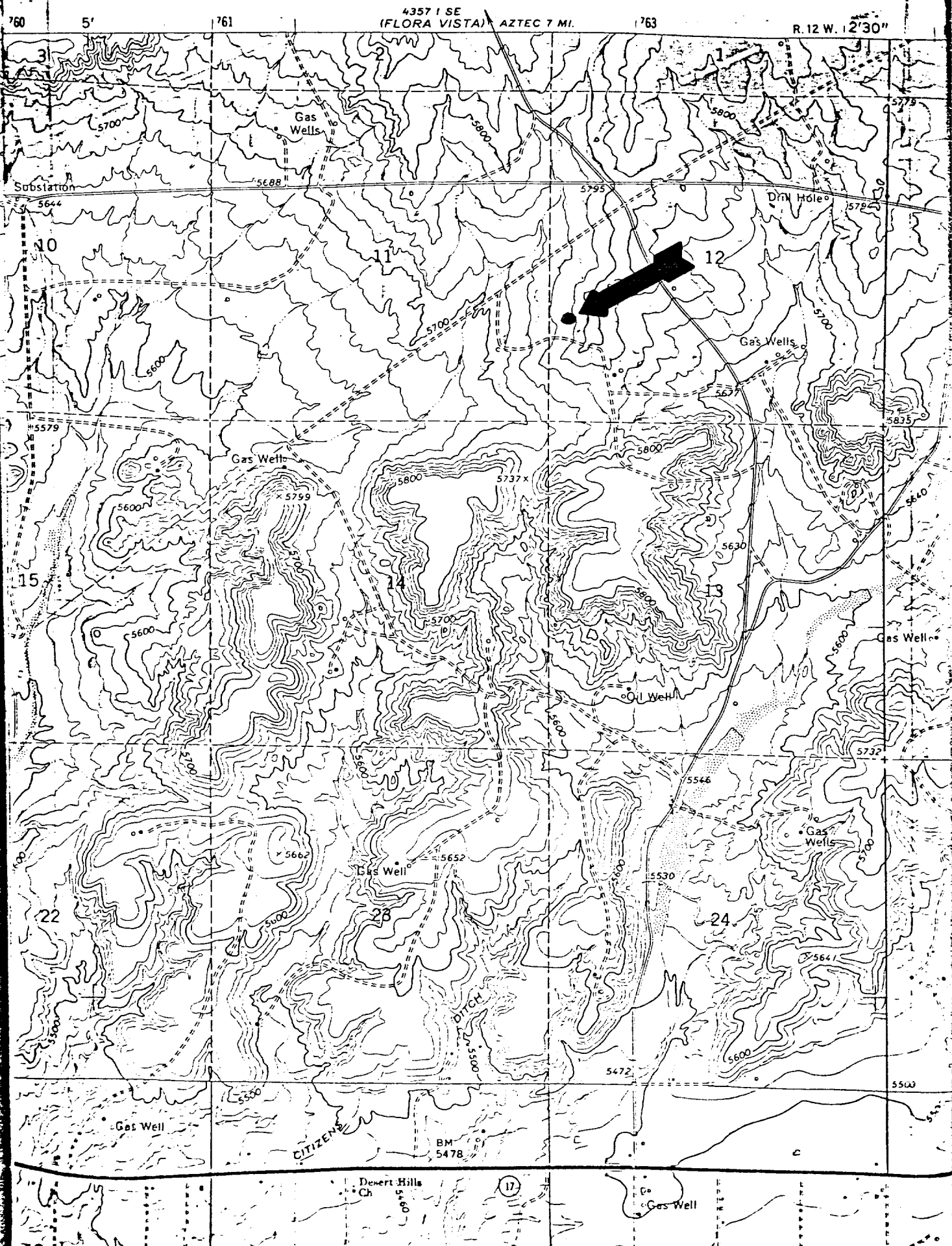
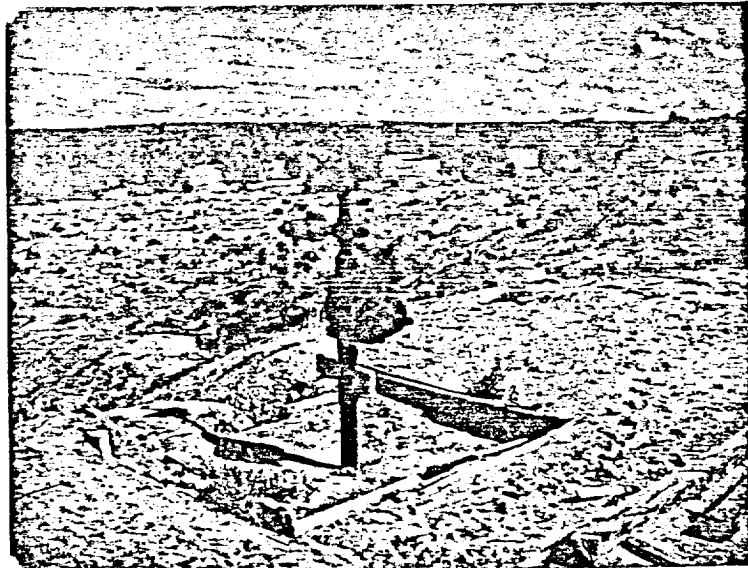


CARROLL & CORNELL
CORNELL #9 L-12-29N-12W



CARROLL & CORNELL
CORNELL #9 L-12-29N-12W



DIVISION APPROVED CEMENTING PROGRAM

Carroll & Cornell
Cornell #9 L-12-29N-12W

Downhole equipment
16" at 70' with 20 sacks
5" at 4285' with 100 sacks
4" at 4358' with 50 sacks

1. Clean out hole to TD 4450'.
2. Go in hole with tubing and set a cement plug 4450'-4100'. WOC a minimum of 3 hours. Go in hole with tubing and tag plug. If plug is above 4150' go to step 3, if not fill to 4100'.
3. Find free point on 4" casing. Shoot off and pull same.
4. Find free point on 5" casing. Shoot and pull same.
5. Set a 150' cement plug at 5" casing stub.
6. Set a cement plug 700' - 550' to cover the Ojo Alamo.
7. Set a cement plug 140' - 40' in and outside surface pipe.
8. Set dry hole marker and top plug with a minimum of 10 sacks of cement.
9. Fill pits, clean and level location. All plugs will be with neat cement with or without an accelerator. Blowout prevention equipment will be required.